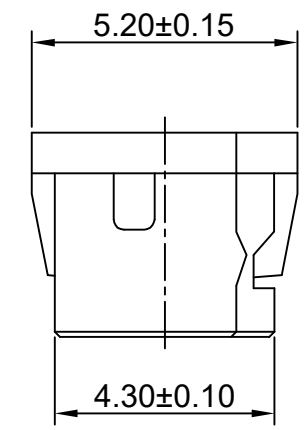
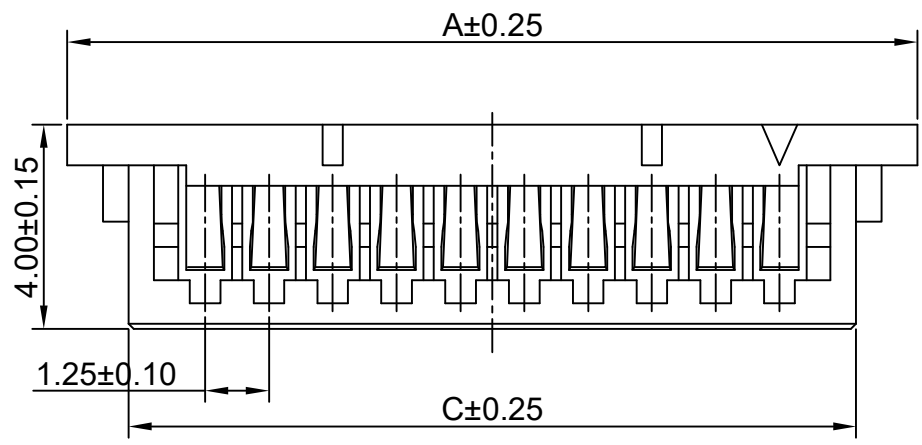
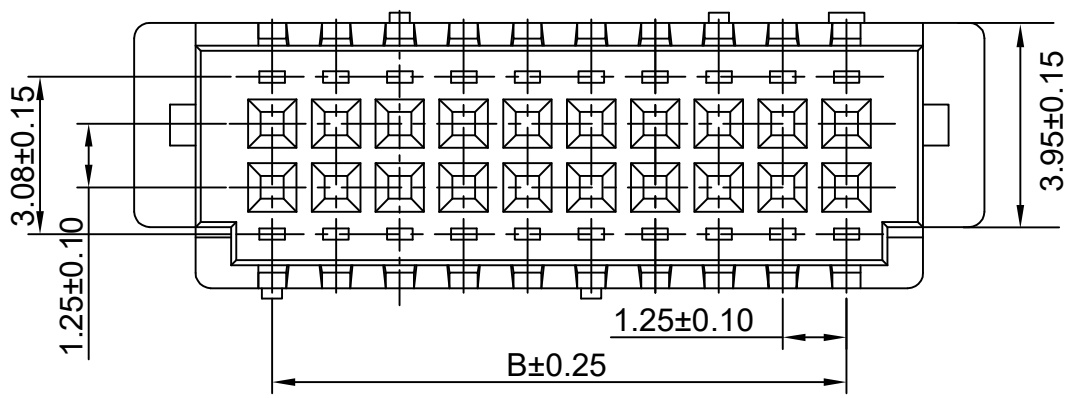



|           |  |            |  |                              |  |                 |  |            |  |
|-----------|--|------------|--|------------------------------|--|-----------------|--|------------|--|
| 修订<br>REV |  | 标记<br>MARK |  | 修改摘要<br>REVISION DESCRIPTION |  | 签名<br>SIGNATURE |  | 日期<br>DATE |  |
| AO        |  |            |  | NEW DWG                      |  |                 |  | 2010-07-07 |  |




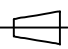
Material: Nylon 66 UL94V-0

| PIN   | A     | B     | C     |
|-------|-------|-------|-------|
| 2x2P  | 6.65  | 1.25  | 4.25  |
| 2x5P  | 10.40 | 5.00  | 8.00  |
| 2x7P  | 12.95 | 7.50  | 10.50 |
| 2x9P  | 15.40 | 10.00 | 13.00 |
| 2x10P | 16.65 | 11.25 | 14.25 |
| 2x12P | 19.15 | 13.75 | 16.75 |
| 2x15P | 22.90 | 17.50 | 20.50 |
| 2x20P | 29.15 | 23.75 | 26.75 |

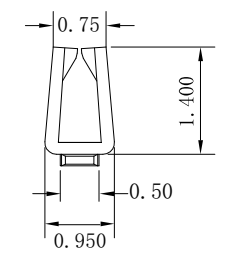
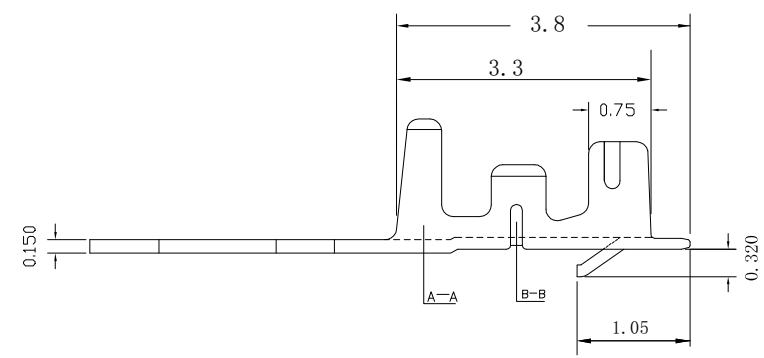
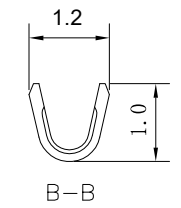
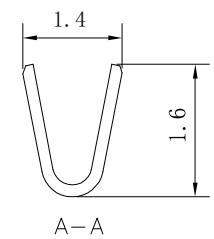
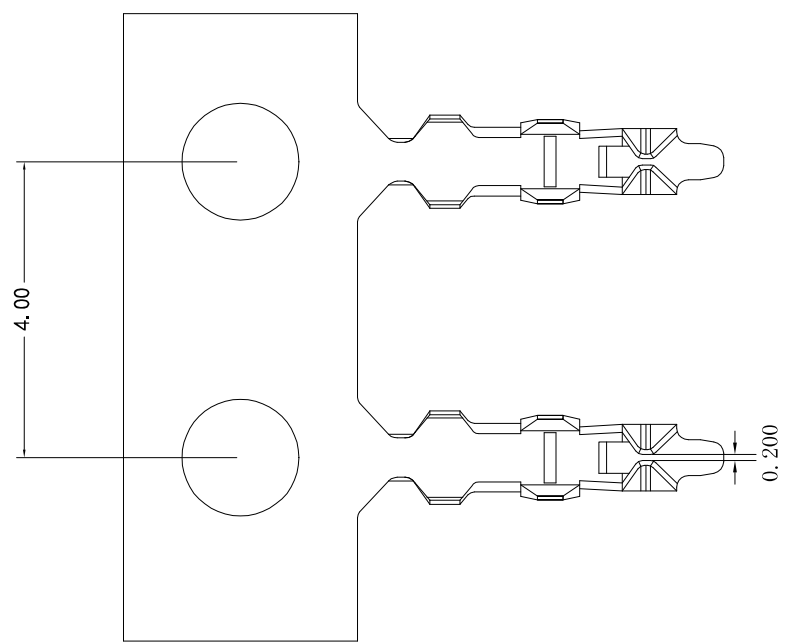






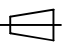
深圳市华德共创科技有限公司  
Shenzhen Huade co-create Technology Co.,LTD  
电话: 0755-27129737 传真: 0755-29940187

|   |            |   |                                  |       |      |             |
|---|------------|---|----------------------------------|-------|------|-------------|
| -TOLERANCES-<br>UNLESS OTHERWISE SPECIFIED<br>公差参数表 |            |   | TITLE:<br>产品名称: DF13H-2xXP       |       |      |             |
| X.X ±0.30   | X.X' ±3°   | APPD:<br>核准: 谢亮   | PART NO:<br>产品编号: HDGC1252H-2xXP |       |      |             |
| X.XX ±0.30  | X.XX' ±2°  | CHECK:<br>校对: 王建业   | DATE                             | SCALE | UNIT | CODE NUMBER |
| X.XXX ±0.10   | X.XXX' ±1° | DRAW:<br>绘图: 黄艳兰  | 2010-07-07                       | 1:1   | mm   | A001        |

| 修订<br>REV | 标记<br>MARK | 修改摘要<br>REVISION DESCRIPTION | 签名<br>SIGNATURE | 日期<br>DATE |
|-----------|------------|------------------------------|-----------------|------------|
| A0        |            | NEW DWG                      |                 | 2014-07-14 |
| A1        |            | REVISE                       |                 | 2020-11-10 |



- NOTE:
1. THICKNE:0.15mm.
  2. MATERIAL:PHOSPHOR BRONZE.
  3. APPLICABE WIRE:UL1007 AWG28#-32#
  4. 使用量具为电子卡尺.
  5. PVC与铜丝包脚需压角.

|  |        |   |      |                   |            |      |             |
|--|--------|---|------|-------------------|------------|------|-------------|
|  <b>深圳市华德共创科技有限公司</b><br>Shenzhen Huade co-create Technology Co.,LTD<br>电话: 0755-27129737 传真: 0755-29940187 |        | TITLE:<br>产品名称: DF13端子  |      |                   |            |      |             |
|  |        | PART NO:<br>产品编号: HDGC1252-T  |      |                   |            |      |             |
| -TOLERANCES-<br>UNLESS OTHERWISE SPECIFIED<br>公差参数表  |        |   |      | DATE              | SCALE      | UNIT | CODE NUMBER |
| X.X  | ± 0.30 | X.X°  | ± 3° | APPD:<br>核准: 谢亮   |            |      |             |
| X.XX   | ± 0.30 | X.XX°   | ± 2° | CHECK:<br>校对: 王建业 |            |      |             |
| X.XXX  | ± 0.10 | X.XXX°  | ± 1° | DRAW:<br>绘图: 黄艳兰  | 2020-11-10 | 1:1  | mm A002     |

## X-ON Electronics

Largest Supplier of Electrical and Electronic Components

*Click to view similar products for [Headers & Wire Housings](#) category:*

*Click to view products by [HDGC](#) manufacturer:*

Other Similar products are found below :

[57102-F02-18ULF](#) [58102-G61-06LF](#) [582553-1](#) [009176003701906](#) [01.001.5753.1](#) [0050291907](#) [02.125.8002.8](#) [609-3404](#) [61062-3](#)  
[CSU011177004](#) [622-0430](#) [622-3653LF](#) [63453-116](#) [636-1030](#) [636-1427](#) [636-3427](#) [636-4007](#) [641938-9](#) [65495-038](#) [65692-001LF](#) [65781-018](#)  
[65781-047](#) [65817-010LF](#) [65817-015LF](#) [66207-023LF](#) [67095-007LF](#) [67601157](#) [68631-112](#) [68645-018](#) [699319-000](#) [M90C108951C](#)  
[70.362.1628.0](#) [70-4210](#) [70-4226B](#) [70-4853B](#) [707-5028](#) [71.350.2428.0](#) [71961-016LF](#) [733-134](#) [733-162](#) [754199-000](#) [760-3052](#) [80.063.4001.1](#)  
[800-90-001-10-001000](#) [800-90-010-10-002000](#) [801-43-002-10-013000](#) [801-43-006-10-002000](#) [803-41-018-10-001000](#) [803-43-024-10-](#)  
[001000](#) [803-93-012-10-001000](#)