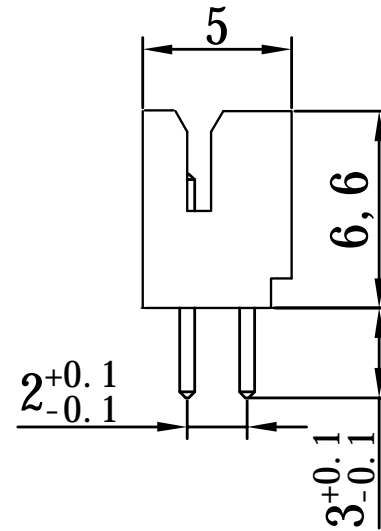
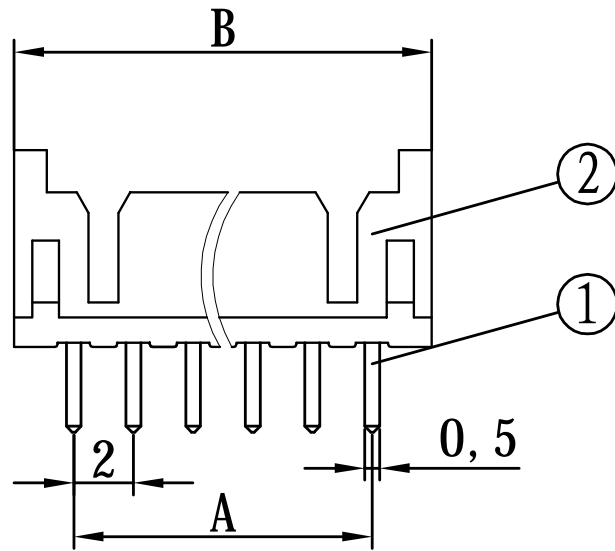


| 修订 REV | 标记 MARK | 修改摘要 REVISION DESCRIPTION | 签名 SIGNATURE | 日期 DATE |
|-----------|------------|------------------------------|-----------------|------------|
| AO | | NEW RELEASE | 黄艳兰 | 2012-03-10 |



Ordering Information & Dimensions

| PIN | Dimensions | |
|-------|------------|-------|
| | A | B |
| 2X02P | 2.00 | 6.00 |
| 2X03P | 4.00 | 8.00 |
| 2X04P | 6.00 | 10.00 |
| 2X05P | 8.00 | 12.00 |
| 2X06P | 10.00 | 14.00 |
| 2X07P | 12.00 | 16.00 |
| 2X08P | 14.00 | 18.00 |
| 2X09P | 16.00 | 20.00 |
| 2X10P | 18.00 | 22.00 |
| 2X11P | 20.00 | 24.00 |
| 2X12P | 22.00 | 26.00 |
| 2X13P | 24.00 | 28.00 |
| 2X14P | 26.00 | 30.00 |
| 2X15P | 28.00 | 32.00 |
| 2X16P | 30.00 | 34.00 |
| 2X17P | 32.00 | 36.00 |
| 2X18P | 34.00 | 38.00 |
| 2X19P | 36.00 | 40.00 |
| 2X20P | 38.00 | 42.00 |

技术参数 SPECIFICATION

间距: 2.0

Pitch: 2.0

工作温度: -25°C ~ +85°C

Working temperature: -25°C ~ +85°C

额定电压: 250V DC/AC (有效值)

Voltage rating: 250V DC/AC (rms)

额定电流: 3.0A

Current rating: 3.0A

接触电阻: < 0.02Ω

Contact resistance: < 0.02Ω

绝缘电阻: ≥ 1000MΩ

Insulation resistance: ≥ 1000MΩ

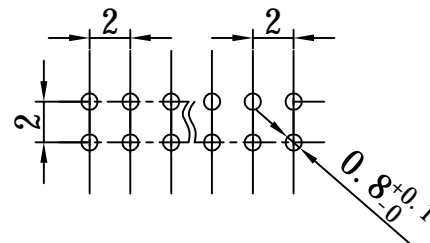
耐压: 1000V AC (有效值)

Withstand voltage: 1000V AC (rms)

焊接温度: 260 ± 5°C

Soldering temperature: 260 ± 5°C

印制板开孔尺寸 (± 0.1)



深圳市华德共创科技有限公司

Shenzhen Huade co-create Technology Co., LTD

TEL : 0755-27129737 FAX : 0755-29940187

| -TOLERANCES- UNLESS OTHERWISE SPECIFIED 公差参数表 | | | | TITLE: 产品名称: PHD2.0直针 | |
|---|-------|--------|-----|--------------------------|-----------------------------------|
| X.X | ±0.30 | X.X° | ±3° | APPD: 核准: 谢亮 | PART NO: 产品编号: HDGC2006WV-2xXP |
| X.XX | ±0.30 | X.XX° | ±2° | CHECK: 校对: 王建业 | DATE |
| X.XXX | ±0.10 | X.XXX° | ±1° | DRAW: 绘图: 黄艳兰 | SCALE |
| | | | | | UNIT |
| | | | | | CODE NUMBER |
| | | | | | A126 |

X-ON Electronics

Largest Supplier of Electrical and Electronic Components

Click to view similar products for [Headers & Wire Housings](#) category:

Click to view products by [HDGC](#) manufacturer:

Other Similar products are found below :

[57102-F02-18ULF](#) [58102-G61-06LF](#) [582553-1](#) [009176003701906](#) [01.001.5753.1](#) [0050291907](#) [02.125.8002.8](#) [609-3404](#) [61062-3](#)
[CSU011177004](#) [622-0430](#) [622-3653LF](#) [63453-116](#) [636-1030](#) [636-1427](#) [636-3427](#) [636-4007](#) [641938-9](#) [65495-038](#) [65692-001LF](#) [65781-018](#)
[65781-047](#) [65817-010LF](#) [65817-015LF](#) [66207-023LF](#) [67095-007LF](#) [67601157](#) [68631-112](#) [68645-018](#) [699319-000](#) [M90C108951C](#)
[70.362.1628.0](#) [70-4210](#) [70-4226B](#) [70-4853B](#) [707-5028](#) [71.350.2428.0](#) [71961-016LF](#) [733-134](#) [733-162](#) [754199-000](#) [760-3052](#) [80.063.4001.1](#)
[800-90-001-10-001000](#) [800-90-010-10-002000](#) [801-43-002-10-013000](#) [801-43-006-10-002000](#) [803-41-018-10-001000](#) [803-43-024-10-](#)
[001000](#) [803-93-012-10-001000](#)