

CATEGORY	DESCRIPTION	P/N #
CONNECTOR	RJ45 8P8C 全塑1X4	MJ5388-X014-HRN1

REV.	ECN NO	DESCRIPTION	REVISED	DATE
A01	—	New Release	XSY	2015.07.08
A02	—	变更脚柱尺寸	XSY	2017.11.17

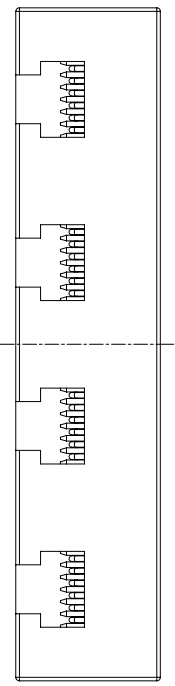
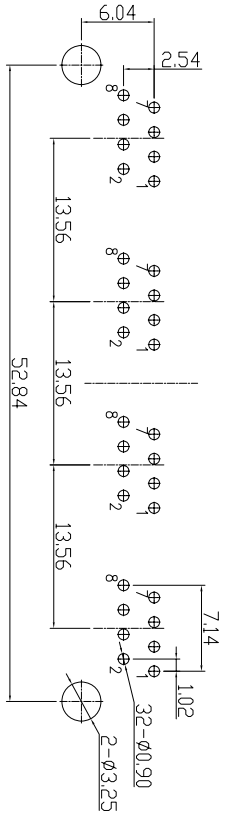
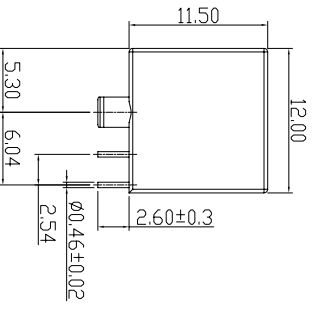
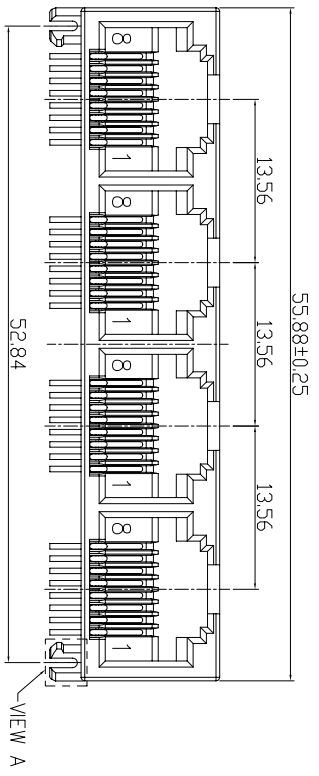


Table 1

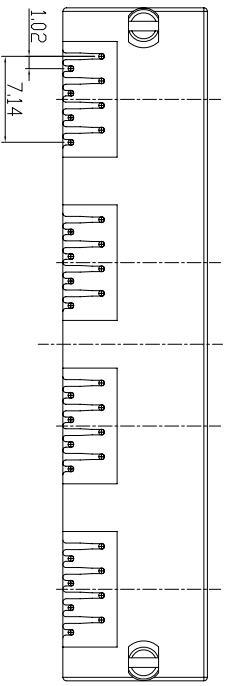
X	Housing Color
B	Black
U	Blue
Y	Yellow

MJ5388-X014-HRN1

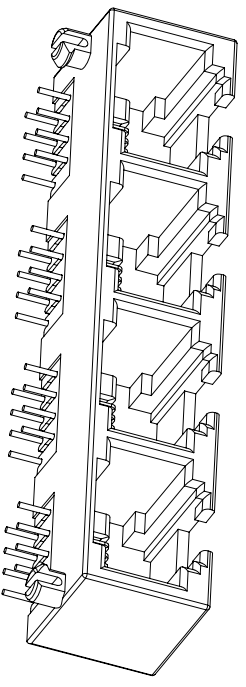
- SPECIFICATION**
- VOLTAGE RATING: 150 VAC RMS.
  - CURRENT RATING: 1.5 AMP
  - CONTACT RESISTANCE: 40 mΩ MAX
  - INSULATION RESISTANCE: 500MΩ MIN.
  - WITHSTAND VOLTAGE: AC1000V RMS 60s.
  - OPERATING TEMPERATURE: -40°C~+80°C



Recommend PCB Layout  
(Jack Top View)  
Tolerance: ±0.05mm  
Recommend PCB Thickness: 1.6mm



VIEW A  
SCALE 2:1



**東莞市合陵電子有限公司**  
DongGuan Heling Electronic Co.,LTD

UNLESS OTHERWISE SPECIFIED TOLERANCES	SCALE:1/1	UNIT: mm	DWG.NO:
DECIMALS: X :±0.5	SIZE: A3	PAGE:1 OF 1	REV:A02
ANGLES: X :±2°	APPROVED BY	CHECKED BY	PREPARED BY
X.X :±0.3	DICK	XSY	XSY
X.XX :±0.2	CUSTOMER COPY		

b	TERMINAL	32	PHOSPHOR BRONZE	∅0.46mm	G/F	
d	HOUSING	1	PBT UL94V-0		SEE TABLE 1	
NO.	PART NAME	QTY	MATERIAL		PLATING & COLOR	Remark

A B C D

A B C D

## X-ON Electronics

Largest Supplier of Electrical and Electronic Components

*Click to view similar products for [Modular Connectors](#) / [Ethernet Connectors](#) category:*

*Click to view products by [Heling](#) manufacturer:*

Other Similar products are found below :

[RJE231881317T](#) [MP1010RX-1000](#) [MP44RX-1000](#) [GAX-3-66](#) [GAX-8-62](#) [93606-0253](#) [GD-A-44](#) [GDCX-PA-66-50](#) [GDCX-PN-64](#) [GDCX-PN-66](#) [GDCX-PN-66-50](#) [GDLX-A-66](#) [GDLX-A-88](#) [GDLX-N-66](#) [GDLX-S-88K](#) [GDTX-S-88-50](#) [GDX-PA-1010](#) [GLX-N-1010M-BLK](#) [GLX-N-44M](#) [GLX-S-88M-BLK](#) [GMX-N-1010](#) [GMX-S-1010](#) [GMX-S-66](#) [GMX-SMT2-N-1010](#) [GMX-SMT2-N-64-50](#) [GMX-SMT2-S6-88](#) [GMX-SMT4-N-88](#) [GPX-2-64](#) [GRT1-BT1-5](#) [GSGX-N-2-88](#) [GSX-NS2-88-3.05](#) [GSX-NS2-88-3.05-50](#) [GSX-NS-88-3.05-30](#) [GSX-NS-88-3.05-50](#) [GSX-NS-88-3.68](#) [1-1775629-2](#) [GWLX-S-88-GR](#) [GWLX-S9-88-YG](#) [1300500326](#) [1300500227](#) [1300530003](#) [1300570002](#) [1324640-4](#) [RJ11FTVC2G](#) [RJ11FTVC2N](#) [RJFTVX2SA1G](#) [132764-001](#) [1400000](#) [1413176](#) [1413235](#)