

CATEGORY	DESCRIPTION	P/N #
CONNECTOR	RJ45 8P8C 带灯带壳	MJ5688-XX11-GR LX

REV.	ECN NO	DESCRIPTION	REVISED	DATE
A02	—	修正PCB LAYOUT	XSX	2015.07.09
A03	—	新增颜色选项	XSX	2016.03.09
A04	ECN190806001	新增LED颜色选项	XSX	2019.08.06

**SPECIFICATION**

- VOLTAGE RATING: 150 VAC RMS.
- CURRENT RATING: 1.5 AMP
- CONTACT RESISTANCE: 40 mΩ MAX
- INSULATION RESISTANCE: 500MΩ MIN.
- WITHSTAND VOLTAGE: AC1000V RMS 60s.
- OPERATING TEMPERATURE: -40°C~+80°C

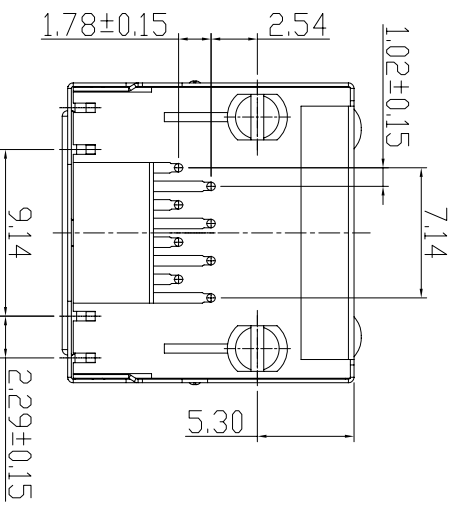
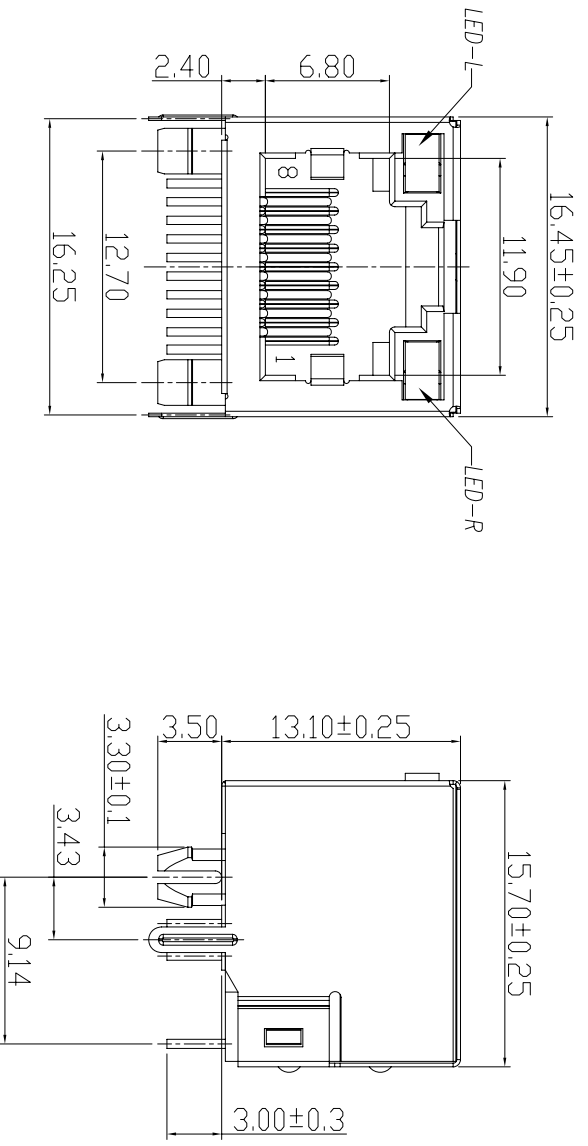


TABLE 3

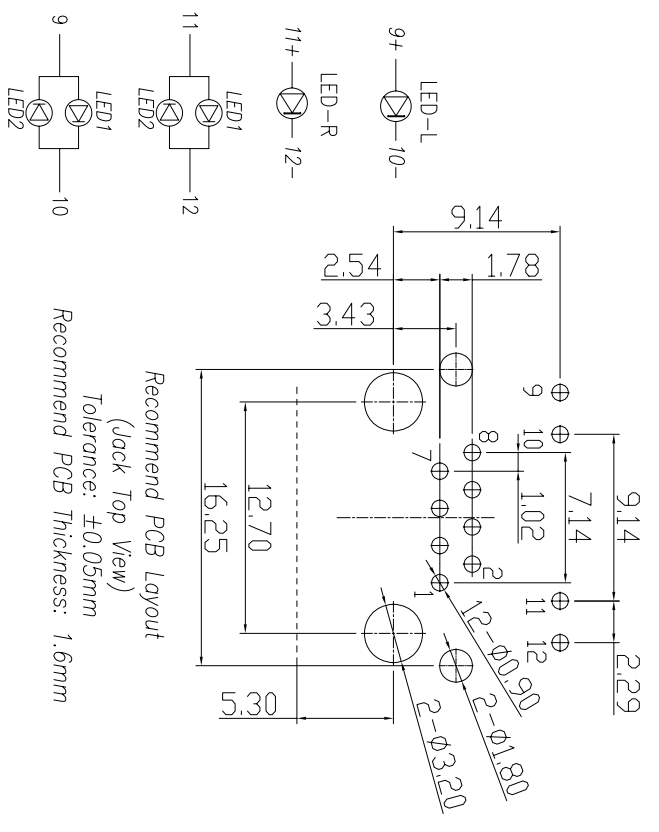
X	COLOUR	PBT UL94V-0
B	BLACK	
U	BLUE	
Y	YELLOW	
1	BLACK	PA9T UL94V-0
2	BLUE	
3	YELLOW	

TABLE 1

X	LED-L	LED2	LED1	LED-R	LED2	LED1	LED-R
0	Green	Green	Green	Green	Green	Green	Green
1	Green	Green	Yellow	Yellow	Yellow	Yellow	Yellow
2	Yellow	Yellow	Green	Green	Green	Green	Orange
A	Green	Green	Green	Green	Green	Green	Green
N	Red	Green	Red	Green	Red	Green	Green

TABLE 2

X	Terminal Plating
0	G/F Plating
1	Au 3u" Plating
2	Au 6u" Plating
3	Au 15u" Plating



e	LED-R	1	SEE TABLE 3	Tin PALTING	
d	LED-L	1	SEE TABLE 3	Tin PALTING	
c	SHELL	1	BRASS T=0.2mm	Ni PALTING	
b	TERMINAL	8	PHOSPHOR BRONZE Ø0.46mm	SEE TABLE 2	
a	HOUSING	1	SEE TABLE 1	SEE TABLE 1	
NO.	PART NAME	Q'TY	MATERIAL	PLATING & COLOR	Remark

UNLESS OTHERWISE SPECIFIED TOLERANCES

SCALE: 1/1 UNIT: mm DWG. NO. **REV: A04**

DECIMALS: ANGLES: X :±0.5 X :±2 X.X :±0.3 X.X :±1° X.XX :±0.2

APPROVED BY: XSY CHECKED BY: XSY PREPARED BY: XSY

**CUSTOMER COPY**

**东莞市合陵电子有限公司**  
DongGuan Heling Electronic Co.,LTD

## X-ON Electronics

Largest Supplier of Electrical and Electronic Components

*Click to view similar products for [Modular Connectors](#) / [Ethernet Connectors](#) category:*

*Click to view products by [Heling](#) manufacturer:*

Other Similar products are found below :

[RJE231881317T](#) [MP1010RX-1000](#) [MP44RX-1000](#) [GAX-3-66](#) [GAX-8-62](#) [93606-0253](#) [GD-A-44](#) [GDCX-PA-66-50](#) [GDCX-PN-64](#) [GDCX-PN-66](#) [GDCX-PN-66-50](#) [GDLX-A-66](#) [GDLX-A-88](#) [GDLX-N-66](#) [GDLX-S-88K](#) [GDTX-S-88-50](#) [GDX-PA-1010](#) [GLX-N-1010M-BLK](#) [GLX-N-44M](#) [GLX-S-88M-BLK](#) [GMX-N-1010](#) [GMX-S-1010](#) [GMX-S-66](#) [GMX-SMT2-N-1010](#) [GMX-SMT2-N-64-50](#) [GMX-SMT2-S6-88](#) [GMX-SMT4-N-88](#) [GPX-2-64](#) [GRT1-BT1-5](#) [GSGX-N-2-88](#) [GSX-NS2-88-3.05](#) [GSX-NS2-88-3.05-50](#) [GSX-NS-88-3.05-30](#) [GSX-NS-88-3.05-50](#) [GSX-NS-88-3.68](#) [1-1775629-2](#) [GWLX-S-88-GR](#) [GWLX-S9-88-YG](#) [1300500326](#) [1300500227](#) [1300530003](#) [1300570002](#) [1324640-4](#) [RJ11FTVC2G](#) [RJ11FTVC2N](#) [RJFTVX2SA1G](#) [132764-001](#) [1400000](#) [1413176](#) [1413235](#)