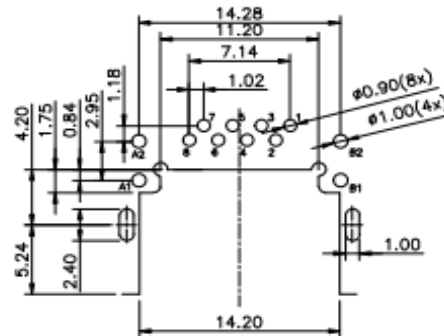
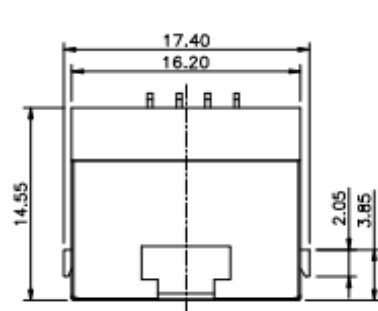
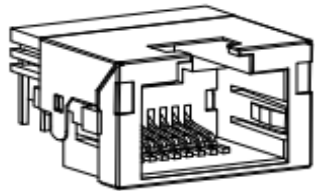


4	3
CATEGORY	DESCRIPTION
CONNECTOR	RJ45/DIP/90度/带壳/带灯/H9.8
P/N #	MJ88D-BX11-KRVLX06

2	1			
REV.	ECN NO	DESCRIPTION	REVISED	DATE
A01	—	NEW	WHQ	2022/01/22



Recommended PCB Layout  
(T=1.0~1.2, Tol:±0.05mm)

NOTES:

1. Electrical:

- 1.1 Current Rating: 1.5A Max.;
- 1.2 Voltage Rsting :150V AC Min. (rms);
- 1.3 Withstanding Voltage: 1000V AC for 1 Minute;
- 1.4 Insulation Resistance: 500M Ohms Min.;
- 1.5 Contact Resistance: 50m Ohms Max;

2. Environmental:

- Operating Temperature: -40°C to +70°C;
- 3. Wetting Temperature: 265±5°C, 5±0.5s

Materials:

Housing:Thermoplastic,UL94V-0,Color is black.  
Terminal:Phosphor Bronze.

Shell: C2680

Plating:

Terminal:Gold flash on contact area.

Matte tin 80u" on solder tails.

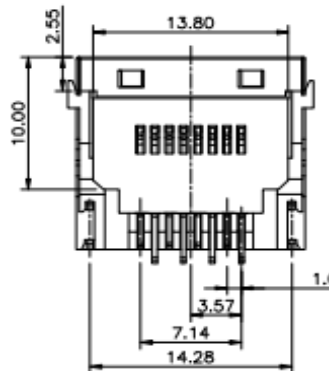
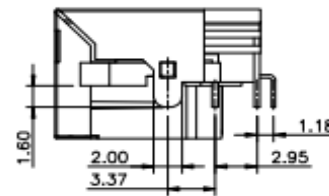
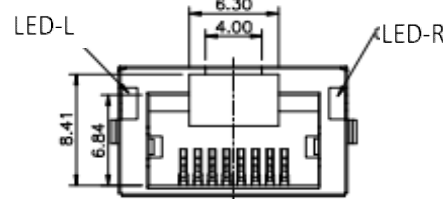
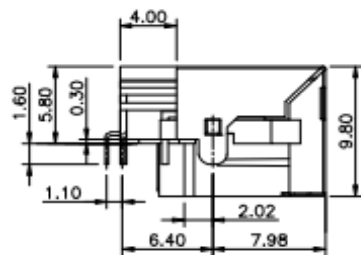
Nickel 50u" underplated over all.

Shell:Nickel 50u" plated over all.

LED plated:

DIP solder plating:Matte tin 100u" on all.

Mylar:Clear polyester.



MJ88D-BX11-KRVLX06

LED electrical characteristic			
Node	Color		
A1(+)	A2(-)	Yellow	A1- $\rightarrow$ -A2
B1(+)	B2(-)	Green	B1- $\rightarrow$ -B2

X	Terminal Plating
0	Au 1u" Plating
1	Au 3u" Plating
2	Au 6u" Plating
3	Au 15u" Plating

X	LED-L	LED-R
1	GREEN	YELLOW
2	YELLOW	GREEN

 东莞市合陵电子有限公司  
DongGuan HeLing Electronic Co.,LTD

UNLESS OTHERWISE SPECIFIED TOLERANCES	SCALE:1/1	UNIT: mm	DWG NO.
	SIZE: A4	PAGE:1 OF 1	REV: A01
DECIMALS: X :±0.5 X.X :±0.3 X.XX :±0.2	ANGLES: X :±2° X.X :±1°	APPROVED BY DICK	CHECKED BY XSY
		PREPARED BY WHQ	
CUSTOMER CDRY			

NO.	PART NAME	Q'TY	MATERIAL	PLATING & COLOR	Remark
-----	-----------	------	----------	-----------------	--------

## X-ON Electronics

Largest Supplier of Electrical and Electronic Components

*Click to view similar products for [Modular Connectors](#) / [Ethernet Connectors](#) category:*

*Click to view products by [Heling](#) manufacturer:*

Other Similar products are found below :

[8949-H88/06BLKA/SN](#) [74441-0010/BKN](#) [PHP-6P6C-5](#) [GAX-3-66](#) [GDCX-PN-66](#) [GLX-A-44](#) [GLX-N-1010M-BLK](#) [GLX-S-88M-BLK](#)  
[GMX-SMT4-N-88](#) [GSGX-N-2-88](#) [GSGX-N-4-88](#) [GSX-NS2-88-3.05](#) [GSX-NS-88-3.68](#) [PT-108A-8C-UL](#) [PTS-J531-8CS-50UL](#) [A-2014-0-4](#)  
[GWLX-S9-88-YG](#) [DC-1021-8-WH-6](#) [1300530003](#) [1324640-4](#) [132764-001](#) [1413235](#) [MPS88RX-5000](#) [E5288-S000K3-L](#) [155302-001](#)  
[AX101050](#) [AX101063](#) [AX101065](#) [AX101072](#) [AX101307](#) [AX101315](#) [AX101318](#) [AX102271](#) [AX102277](#) [AX102651](#) [AX102660](#) [AX104024](#)  
[203475](#) [PC4D0018P](#) [KIT38082NI](#) [8949-B88/6](#) [2-6609208-5](#) [30-8956](#) [30-8964-100](#) [SM85](#) [SM99S01VBNN04G7](#) [17-103540](#) [191587](#) [PDI-68-RV](#) [PHP-8P8C-S-5](#)