

All dimensions are for information purposes only/Alle Maße haben ausschliesslich informativen Charakter

Product type/ Artikelbezeichnung	Nom. Conduit-Ø/ Nom. Schlauch-Ø	Thread/Gewinde <b>L</b>	<b>M</b>	Bore/Lichte Weite <b>N</b>	<b>O</b>	A/F / SW <b>P</b>	A/F / SW <b>R</b>	Project no./ Projektnr.
<b>PCS10-SM-M12</b>	10	M12x1.5	8	5.6	30.2	13	13	GPN 09-0559
<b>PCS12-SM-M16</b>	12	M16x1.5	8	8.5	32.2	17	17	GPN 09-0560
<b>PCS16-SM-M16</b>	16	M16x1.5	10	11.5	34.2	20	20	GPN 09-0561
<b>PCS16-SM-M20</b>	16	M20x1.5	10	11.5	34.2	22	20	GPN 09-0562
<b>PCS20-SM-M20</b>	20	M20x1.5	10	15.3	35.5	24	24	GPN 09-0563
<b>PCS25-SM-M25</b>	25	M25x1.5	12	19.1	43.7	29	29	GPN 09-0564
<b>PCS32-SM-M32</b>	32	M32x1.5	13	26.2	48.0	38	38	GPN 09-0565
<b>PCS40-SM-M40</b>	40	M40x1.5	14	34.2	51.2	48	48	GPN 09-0566
<b>PCS50-SM-M50</b>	50	M50x1.5	15	44.8	54.2	58	58	GPN 09-0567
<b>PCS63-SM-M63</b>	63	M63x1.5	18	54.5	63.2	70	70	GPN 09-0568
<b>PCS10-SM-PG7</b>	10	PG7	8	5.6	30.2	13	13	GPN 09-0569
<b>PCS12-SM-PG9</b>	12	PG9	8	8.5	32.2	17	17	GPN 09-0570
<b>PCS16-SM-PG11</b>	16	PG11	10	11.5	34.2	22	20	GPN 09-0571
<b>PCS20-SM-PG13</b>	20	PG13.5	10	15.3	35.5	24	24	GPN 09-0572
<b>PCS20-SM-PG16</b>	20	PG16	10	15.3	35.5	24	24	GPN 09-0573
<b>PCS25-SM-PG21</b>	25	PG21	12	19.1	43.7	29	29	GPN 09-0574
<b>PCS32-SM-PG29</b>	32	PG29	13	26.2	48.0	38	38	GPN 09-0575
<b>PCS40-SM-PG36</b>	40	PG36	14	34.2	51.2	48	48	GPN 09-0576
<b>PCS50-SM-PG42</b>	50	PG42	15	44.8	54.2	58	58	GPN 09-0577

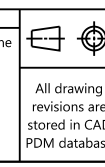
Printed copy for information only/  
Ausdruck nur zur Information

- Material: Brass, nickel plated      - Material: Messing, vernickelt  
 Circlip: Steel, plated                      Sicherungsring: Stahl, beschichtet

With integrated circlip (not visually represented)      Mit integriertem Sicherungsring (bildlich nicht dargestellt)

The manufacturing-related geometry changes (injection point, ejectors marks, etc.) allowed. Design of the details are left to suppliers discretion.      Durch das Herstellverfahren bedingte Geometrieänderungen (Anspritzung, Auswerfermarkierungen, etc.) zulässig. Einzelheiten der Ausführung bleiben dem Hersteller ueberlassen.

Revision Level		Revision Record		The copyright of this drawing is reserved by HellermannTyton.	Drawn	Date (YYYY/MM/DD)	Title PCS...-SM-...	Scale 1/1
Drawing	State	Part	Material of circlip added, Drawing frame changed		Langeloh	2009/11/26		
04.2 Design Release				Approved	Date (YYYY/MM/DD)	Drawing-No 09-0559-001-CSG		Global Project Number See table
Changed	Date (YYYY/MM/DD)			Schiwek	2009/11/26			Format A2
I. Langeloh	2021/02/03							Sheet 1 / 1
Approved	Date (YYYY/MM/DD)							
B. Schiwiek	2021/02/03							



## X-ON Electronics

Largest Supplier of Electrical and Electronic Components

*Click to view similar products for [Conduit Fittings & Accessories](#) category:*

*Click to view products by [HellermannTyton](#) manufacturer:*

Other Similar products are found below :

[M3231GAB](#) [M3231GAC](#) [M3231GAE](#) [M3231GL](#) [M3231GN](#) [M3231GT](#) [VC-937-16/RED](#) [VC-1125-16/RED](#) [DM0240-1/2A](#) [3408B](#) [G6002](#)  
[M4340GAE](#) [C2016-P](#) [C2012-P](#) [3407B](#) [1660-P](#) [561-87BG11BLK](#) [561-75BG11B](#) [1.511.1601.14](#) [1.533.1201.50](#) [1.533.1601.51](#) [1.533.2001.51](#)  
[1.533.4001.50](#) [1.533.5001.50](#) [BVNV-P428](#) [BVBV-P366](#) [2276](#) [2663-P](#) [3405B](#) [C2070-P](#) [3582V](#) [2643-P](#) [4975](#) [2644-P](#) [2955](#) [M50](#) [2404-P](#)  
[C2008-P](#) [2723-P](#) [2291](#) [2133-P](#) [3048F](#) [VC12516](#) [RC156-0500](#) [DM0523-1/2A](#) [1035A](#) [DMS0250-1A](#) [DMS0313-1A](#) [1040A](#) [1050A](#) [R1/8A](#)