

### Corrugated Conduits

#### IWS Polyamide 6

IWS corrugated flexible conduits are typically used to route and protect wiring in cars and commercial vehicles, control panels and machines.

#### Features and benefits

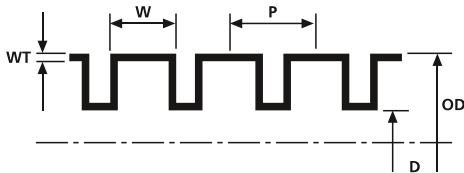
- Good crush and abrasion resistance
- Highly flexible
- Good protection against oils, fuels and solvents
- Self-extinguishing according to UL94 HB and FMVSS 302
- A slit version is available on request



IWS flexible corrugated conduits



Slit version on request.



IWS

<b>MATERIAL</b>	Polyamide 6 (PA6)
<b>Operating Temperature</b>	-40 °C to +120 °C
<b>Flammability</b>	UL 94 HB, FMVSS 302



PART DESCRIPTION	Nominal Ø	Outside Ø (OD)	Inside Ø (ID)	Min. Bending Radius (R)
IWS4.5-PA6-BK	4.5	7.3	4.3	8
IWS7.5-PA6-BK	7.5	10.0	6.7	13
IWS8.5-PA6-BK	8.5	11.7	8.4	15
IWS10-PA6-BK	10	13.0	9.9	20
IWS12-PA6-BK	12	15.7	12.2	30
IWS13-PA6-BK	13	15.8	12.7	35
IWS14-PA6-BK	14	18.5	14.2	40
IWS17-PA6-BK	17	21.2	16.6	45
IWS19-PA6-BK	19	24.3	19.3	50
IWS22-PA6-BK	22	25.4	21.3	50
IWS23-PA6-BK	23	28.3	23.2	55
IWS26-PA6-BK	26	31.2	25.8	60
IWS29-PA6-BK	29	34.5	29.0	65

All dimensions in mm. Subject to technical changes.

## X-ON Electronics

Largest Supplier of Electrical and Electronic Components

*Click to view similar products for [Spiral Wraps, Sleeves, Tubing & Conduit](#) category:*

*Click to view products by [HellermannTyton](#) manufacturer:*

Other Similar products are found below :

[601203-000](#) [CTA-0053](#) [8426-11](#) [8429-9](#) [8445-7.5](#) [8450](#) [120-104-24](#) [120-113-16B](#) [120-116-1-1-09BE](#) [120-116-1-1-09BF](#) [120-116-1-1-09BP](#)  
[120-116-1-1-12BE](#) [120-116-1-1-12BP](#) [120-116-1-1-20BP](#) [120-116-1-1-32BE](#) [120-117-40](#) [120-123-06](#) [120-123-10](#) [120-123-14](#) [120-123-16](#)  
[120-125-12BL](#) [120-125-12R](#) [120-125-16](#) [120-125-16R](#) [120-125-16Y](#) [120-125-20R](#) [120-125-24Y](#) [120-125-28](#) [120-125-28R](#) [120-125-32](#)  
[120-125-32R](#) [120-125-40](#) [120-125-56](#) [120-126-09](#) [120-126-09BL](#) [120-126-12](#) [120-126-12BL](#) [120-126-14](#) [120-126-16](#) [120-126-16BL](#) [120-](#)  
[126-20](#) [120-126-20BL](#) [120-126-20R](#) [120-126-24](#) [120-126-28](#) [120-126-32](#) [120-126-40BL](#) [120-126-52](#) [120-126-52BL](#) [120-104-12](#)