

Identification tags for cable bundles, thermal transfer

TIPTAG MC – Metal content

The TIPTAG MC cable markers have been especially designed for applications where materials need to be metal detectable. Small metal particles have been included into the entire length of the marker making it ideal for marking larger cables, wires and bundles in the food and pharmaceutical industries. TIPTAG MCs come in a special perforated format that includes holes for fastening with cables ties (MCT).

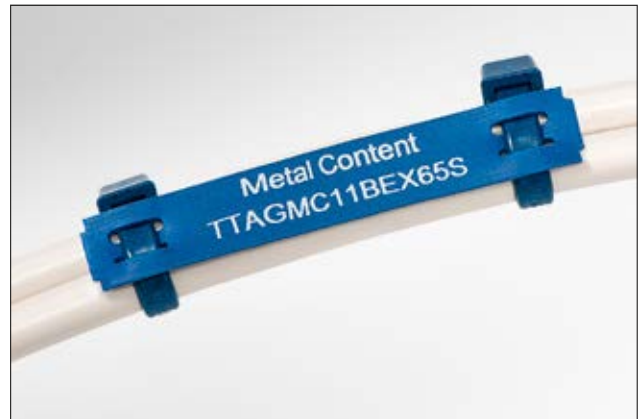
Print from the reel with HellermannTyton's premium range of thermal transfer printers.

Features and benefits

- Metal detectable
- For marking larger cables in food and pharma industries
- Outstanding chemical resistance
- High temperature resistant
- Non-burning

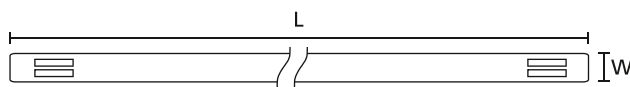


Can support quality assurance in the production of food stuffs, for example HACCP.



Metal content identification tags TIPTAG MC for a safe and clean production process.

MATERIAL	Polyolefin (PO), Metal (MET)
Operating Temperature	-40 °C to +85 °C
Recommended Ribbon Type	TTDTHOUT, TTRW
Thermal Transfer Printer	TT430, TT4030



TYPE	Length (L)	Width (W)	Pack Cont.	Colour	Article-No.
TTAGMC11BEX65S	65.0	11.0	190 pcs.	Blue (BU)	556-26500
TTAGMC15BEX65S	65.0	15.0	190 pcs.	Blue (BU)	556-26502
TTAGMC11BEX100S	100.0	11.0	120 pcs.	Blue (BU)	556-26501
TTAGMC15BEX100S	100.0	15.0	120 pcs.	Blue (BU)	556-26503

All dimensions in mm. Subject to technical changes.

Minimum Order Quantity (MOQ) may differ from package content. Other packaging options may also be available. More colours on request.

X-ON Electronics

Largest Supplier of Electrical and Electronic Components

Click to view similar products for [Wire Labels & Markers](#) category:

Click to view products by [HellermannTyton](#) manufacturer:

Other Similar products are found below :

[89078GBEST](#) [89082GBESR](#) [89082GBEST](#) [PCL025-4](#) [5761-2SF](#) [58400](#) [586R734H02](#) [M1.040.0000.6](#) [CRS-CM5M](#) [CRS-M18M](#) [CS1836-000](#) [CS8626-000](#) [CU6337-000](#) [CU6342-000](#) [CU6343-000](#) [CWD01-0](#) [CWD012-0](#) [CWD012-7](#) [CWD015-3](#) [CWD015-7](#) [CWD02-0](#) [CWD02-3](#) [CWD02-4](#) [CWD02-6](#) [CWD02-8](#) [CWD02-A](#) [CWD02-D](#) [CWD02-H](#) [CWD02-K](#) [CWD02-L](#) [CWD02-M](#) [CWD02-P](#) [CWD02-Q](#) [CWD02-R](#) [CWD02-U](#) [CWD02-W](#) [CWD02-Y](#) [CWD03-+](#) [CWD03-0](#) [CWD03-P](#) [CWD06-0](#) [CWD06-8](#) [CWD06-9](#) [CWD06-L](#) [CWD06-N](#) [CWD09-0](#) [CWD09-5](#) [CWD09-7](#) [6806810001](#) [CZ2857-000](#)