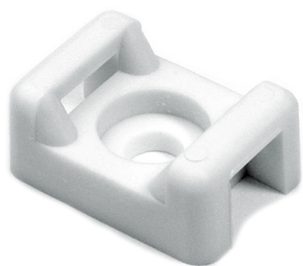


Specification Sheet

Part Number: CTM010M4



KR/CTM series are designed to provide stability to wire bundles. These mounts can accommodate miniature, intermediate, or standard cross-section cable ties.

Each mount is secured with a single screw.

Cable Tie Anchor Mount, .58" x .37", .15" Hole Dia, .2" Max Tie Width, PA66, White, 1000/pkg

Article Number 151-30305

Type CTM0

Color White (WH)

Quantity Per bag

Product Description Designed specifically for holding heavier cable bundles these mounting bases can be used in many industries from agriculture to truck manufacture. They offer a very secure fixing and can be used with a wide variety of heavy duty cable ties up to 8.3 mm width.

Short Description Cable Tie Anchor Mount, .58" x .37", .15" Hole Dia, .2" Max Tie Width, PA66, White, 1000/pkg

Global Part Name CTM0-PA66-WH

Length L (Imperial)	0.58
Length L (Metric)	14.7
Fixation Method	Screw Mounting and Rivet
Width W (Imperial)	0.37
Width W (Metric)	9.4
Cable Ties	T18 - T50
Height H (Imperial)	0.27
Height H (Metric)	6.9
Cable Tie Width Max (Imperial)	0.2
Cable Tie Width Max (Metric)	5.0
Mounting Hole Diameter D (Imperial)	0.15
Mounting Hole Diameter D (Metric)	3.8 mm
Mounting Hole Diameter D Max (Metric)	3.8
Material	Polyamide 6.6 (PA66)

Material Shortcut	PA66
Flammability	UL 94 V-2
Operating Temperature	-40°F to +185°F (-40°C to +85°C)
ROHS Compliant	Yes
Certification/Specification	UL-ZODZ2.E64139
UL Recognized (US)	Yes
UL Recognized (US and Canada)	Yes
Package Quantity (Imperial)	1000
Package Quantity (Metric)	1000
Customs Number	3926909988

X-ON Electronics

Largest Supplier of Electrical and Electronic Components

Click to view similar products for [Cable Tie Mounts](#) category:

Click to view products by [HellermannTyton](#) manufacturer:

Other Similar products are found below :

[3-350087-0](#) [CTB75X75BKA-C](#) [561-EZAB580T](#) [561-EZS375B40](#) [561-TA250125](#) [08443-0](#) [10035-0](#) [561-TA00600](#) [1689174-1](#) [08445-0](#)
[10351-0](#) [561-TA250125B](#) [20015-0](#) [10350-0](#) [10029-0](#) [08484-0](#) [08446-0](#) [08318-0](#) [PAM075NY-A-C](#) [MTH1-3](#) [10044](#) [151-11319](#) [151-11819](#)
[PLWP1SB-D](#) [PLWP1M-C](#) [PLWP2SA-D](#) [PLWP2SB-D](#) [PLWP2S-C](#) [PLWP1S-D](#) [PLWP1M-D](#) [TA1S8-C](#) [ABM3H-A-L](#) [ABM3H-AT-T0](#)
[EMS-A-C0](#) [EMSK3-1-3-0](#) [10079](#) [10030](#) [151-10930](#) [151-10920](#) [3590](#) [151-28320](#) [151-28349](#) [151-28530](#) [151-10914](#) [151-10904](#) [151-10916](#)
[151-10906](#) [06297](#) [CTB75X75NTA-C](#) [792](#)