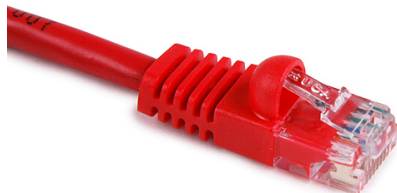


Specification Sheet

Part Number: PCRED5



Category 5e Patch Cord, 5.0 ft, Red, 1/pkg

Article Number

851-14231

Type

PC5E

Color

Red (RD)

Features & Benefits

- Exceeds Category 5e performance standards
- Pre-tested with test results supplied
- Manufactured with PVC Sheath
- Available in standard lengths of 1m, 2m, 3m, 5m and 10m
- Non-standard lengths available on request

Product Description

Category 5e Copper Patch Leads are a critical component in ensuring the end to end performance of a network. The Category 5e Patch leads incorporate a low profile shielded plug suitable for high density applications with an integral strain relief boot to minimize force on terminations and to assist in managing the bend radius of the cable.

Short Description

Category 5e Patch Cord, 5.0 ft, Red, 1/pkg

Global Part Name	PC5E
Technical Description	Category 5e patch cord, 5.0 ft, Red
Length L (Imperial)	5.0
UL Listed (US and Canada)	Yes
UL Listed (US)	Yes
Package Quantity (Imperial)	1
Package Quantity (Metric)	1
Customs Number	8544420000

X-ON Electronics

Largest Supplier of Electrical and Electronic Components

Click to view similar products for [Ethernet Cables / Networking Cables](#) category:

Click to view products by [HellermannTyton](#) manufacturer:

Other Similar products are found below :

[73-6670-7](#) [73-6680-15](#) [73-7797-25](#) [MCJB2-10P6Q7-120](#) [84909-0204](#) [1200700174](#) [1200860368](#) [E16A06002M030](#) [E200102-009-S1](#)
[AX105346-EW](#) [MT14-187L](#) [17-103530](#) [ERWPAB3002M005](#) [190-038045-01](#) [NK5EPC18RDY](#) [NK5EPC18VLY](#) [NK5EPC18YLY](#)
[NK5EPC1GRY](#) [NK5EPC4Y](#) [NK5EPC6YLY](#) [NK5EPC8BLY](#) [NK5EPC9YLY](#) [1969343-6](#) [C501100010](#) [C501106002](#) [C501106007](#)
[C501106015](#) [C501106025](#) [C601102010](#) [C601104010](#) [C601106007](#) [C601106015](#) [2142758-2](#) [2168427-2](#) [CAT1106007](#) [21949-1](#) [2J1866A](#)
[RJF SFTP 5E 0500](#) [AX100351](#) [MN14CEC/ST](#) [C501100015](#) [C501106004](#) [C501106010](#) [C5F1108007](#) [C601104004](#) [C601106004](#)
[CA21106004](#) [CA21106010](#) [CA21106015](#) [CA21109007](#)