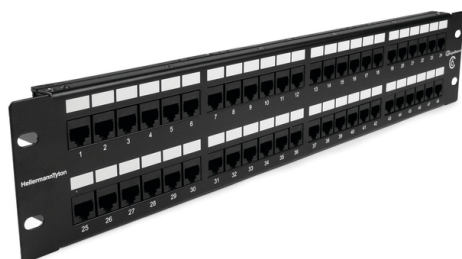


Specification Sheet

Part Number: PP110C648



Write-on labels provided for easy identification

Clear plastic channel protects PCB and allows easy viewing of wiring label

Front face provides an attractive, flush appearance

Category 6 Universal 48 Port Patch Panel, 2U, Black, 1/box

Article Number 853-50003

Type PP110C648

Color Black (BK)

Quantity Per box

Product Description

The Universal 110 Category 6 range of patch panels offer exceptional performance and are also available in 1U 24 port, 1U 48 port right angled and 12 port vertical versions. The 2U 48 Port Panel is constructed of 8 modular units, each offering 6 RJ45 ports allowing for any of the 6 port modules to be replaced in the case of port damage or failure. The Universal 110 2U 48 Port Panel is supplied with or with Rack Snap mounting fixings and an optional rear cable manager is also available. The Universal 110 Category 6 products are designed to support any data or voice protocol that is capable of running over a Category 6 cabling system.

Short Description	Category 6 Universal 48 Port Patch Panel, 2U, Black, 1/box
Global Part Name	PP110C648
Technical Description	Category 6 Universal 48 Port Patch Panel, 2U, Black
Port Count	48
Width W (Imperial)	19.0
Width W (Metric)	483.0
Height H (Imperial)	3.6
Height H (Metric)	88.0
Depth D (Imperial)	1.14
Depth D (Metric)	29.0
UL Listed (US and Canada)	Yes
UL Listed (US)	Yes
Package Quantity (Imperial)	1

Package Quantity (Metric) 1

Customs Number 9030400000

© 2022 HellermannTyton. All Rights Reserved.

[Contact Us](#) [RoHS/WEEE Compliance](#) [Disclaimer](#) [Terms and Conditions](#)

X-ON Electronics

Largest Supplier of Electrical and Electronic Components

Click to view similar products for [Modular Connectors / Ethernet Connectors](#) category:

Click to view products by [HellermannTyton](#) manufacturer:

Other Similar products are found below :

[8949-H88/06BLKA/SN](#) [74441-0010/BKN](#) [MP1010RX-1000](#) [MP44RX-1000](#) [PHJ-4P4C-1-V-4](#) [PHP-6P6C-5](#) [GAX-3-66](#) [GAX-8-62](#) [GDCX-PA-66-50](#) [GDCX-PN-64](#) [GDCX-PN-66](#) [GDCX-PN-66-50](#) [GDLX-A-66](#) [GDLX-N-66](#) [GDLX-S-66](#) [GDLX-S-88K](#) [GDLX-SMT-S-88](#) [GDTX-S-88-50](#) [GDX-PA-1010](#) [GLX-N-1010M-BLK](#) [GLX-S-88M-BLK](#) [GMX-N-1010](#) [GMX-S-1010](#) [GMX-S-66](#) [GMX-SMT4-N-88](#) [GPX-2-64](#) [GSGX-N-2-88](#) [GSGX-N-4-88](#) [GSX-NS2-88-3.05](#) [GSX-NS2-88-3.05-50](#) [GSX-NS-88-3.05-50](#) [PT-108A-8C-UL](#) [PT-J951-8C](#) [PTS-J531-8CS-50UL](#) [1-1775629-2](#) [A-2014-0-4](#) [GWLX-S-88-GR](#) [GWLX-S9-88-YG](#) [DC-1021-8-WH-6](#) [1300530003](#) [1324640-4](#) [RJ11FTVC2G](#) [RJ11FTVC2N](#) [RJFTVX2SA1G](#) [132764-001](#) [1413235](#) [MP88X-1000](#) [MPS88RX-5000](#) [E5288-S000K3-L](#) [E5908-15A242-L](#)