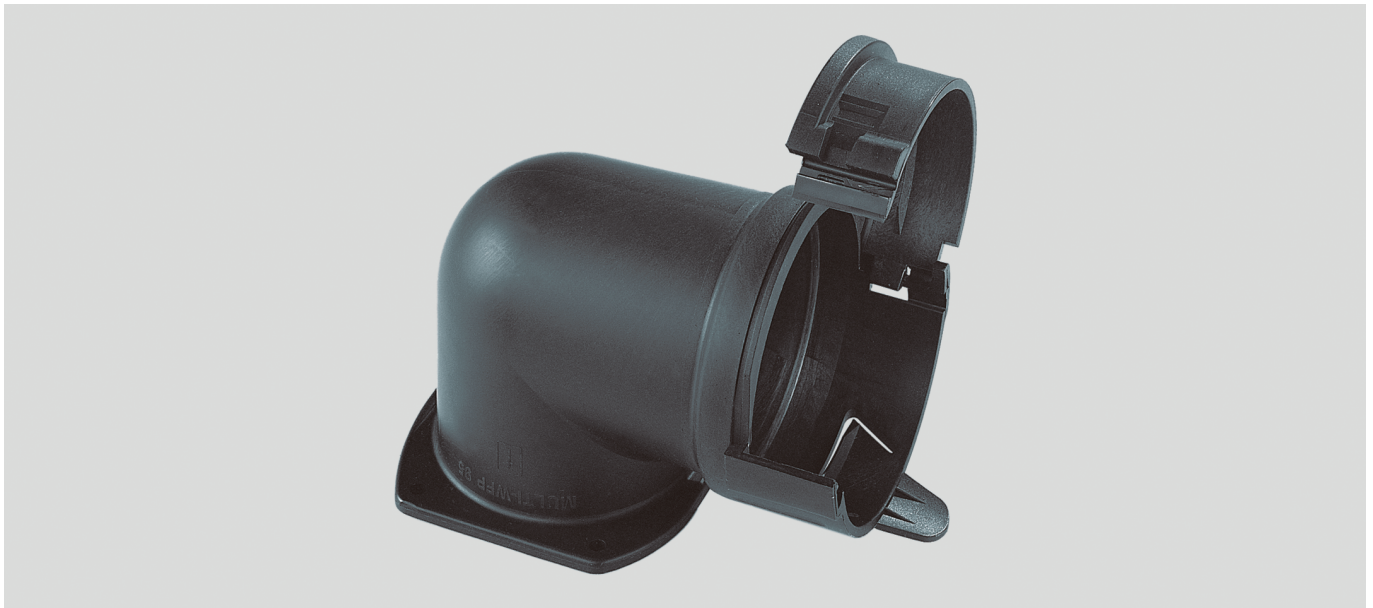


# JUMBO-WFP flange connection angled 90°



## JUMBO-WFP

One-piece flange connection, 90° angle. Suitable for parallel-coiled HELUcond Jumbo protection tubes.

## Application

- Plant and machine construction
- Robot construction
- Automation technology
- Vehicle construction and shipbuilding
- Rail technology
- Installation technology
- Control cabinet construction

## Material

Polyamide PA 6

Flammability acc. to UL 94: VO

- halogen-free
- cadmium-free

## Properties

resistant to a multitude of

- fuels
- mineral oils
- greases
- weak bases
- weak acids

## Note

Additional seal increases protection classification to IP 65.

JUMBO sealing set:

Set contains 1 x O-ring and 1 x cellular rubber seal.

## Technical data

Protection class: IP 54

Temperature range: -40°C up to +115°C

## flange connection – angled 90°

Part no. grey	Part no. black	Suitable for ND	Unit	Net EUR/ 100 items at a purchase of		
90404	920372	70,0	1	up to 100	101 - 500	501 - 1000
90404	920372	70,0	1	o. r.	o. r.	o. r.
90405	920373	95,0	1	o. r.	o. r.	o. r.

## sealing set

Part no.	Colour	Suitable for ND	Unit	Net EUR/ 100 items at a purchase of		
90406	black	70,0	1	up to 100	101 - 500	501 - 1000
90406	black	70,0	1	o. r.	o. r.	o. r.
90407	black	95,0	1	o. r.	o. r.	o. r.

Dimensions and specifications may be changed without prior notice.

o. r. = on request

## X-ON Electronics

Largest Supplier of Electrical and Electronic Components

*Click to view similar products for [Conduit Fittings & Accessories](#) category:*

*Click to view products by [Helukabel](#) manufacturer:*

Other Similar products are found below :

[M3231GAB](#) [M3231GAC](#) [M3231GAE](#) [M3231GL](#) [M3231GN](#) [M3231GT](#) [VC-937-16/RED](#) [VC-1125-16/RED](#) [DM0240-1/2A](#) [3408B](#) [G6002](#)  
[M4340GAE](#) [C2016-P](#) [C2012-P](#) [3407B](#) [1660-P](#) [561-87BG11BLK](#) [561-75BG11B](#) [1.511.1601.14](#) [1.533.1201.50](#) [1.533.1601.51](#) [1.533.2001.51](#)  
[1.533.4001.50](#) [1.533.5001.50](#) [BVNV-P428](#) [BVBV-P366](#) [2276](#) [2663-P](#) [3405B](#) [C2070-P](#) [3582V](#) [2643-P](#) [4975](#) [2644-P](#) [2955](#) [M50](#) [2404-P](#)  
[C2008-P](#) [2723-P](#) [2291](#) [2133-P](#) [3048F](#) [VC12516](#) [RC156-0500](#) [DM0523-1/2A](#) [1035A](#) [DMS0250-1A](#) [DMS0313-1A](#) [1040A](#) [1050A](#) [R1/8A](#)