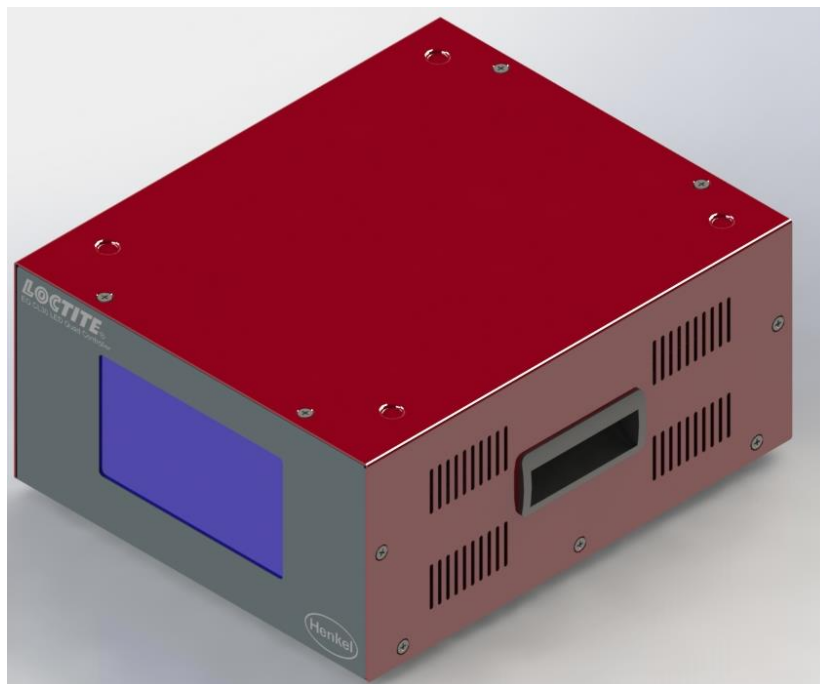


**LOCTITE**

## 2257357 EQ CL30 LED Quad Controller

### Product Description Sheet



## Product Features

- Capacity for up to four UV LED heads
- Intensity adjustment for each channel
- Works with Loctite CL30 LED Flood heads
- Touch screen HMI
- 3 running modes: Timer, Level and Advance
- 3 languages: English, German and Chinese
- Environmentally friendly

## Product Benefits

- Touch screen operation panel, easy to use
- Friendly user interface
- Increased productivity, maintenance free
- Lower cost of ownership
- Less energy required, lower operating cost
- Easy integration.

## Technical Data

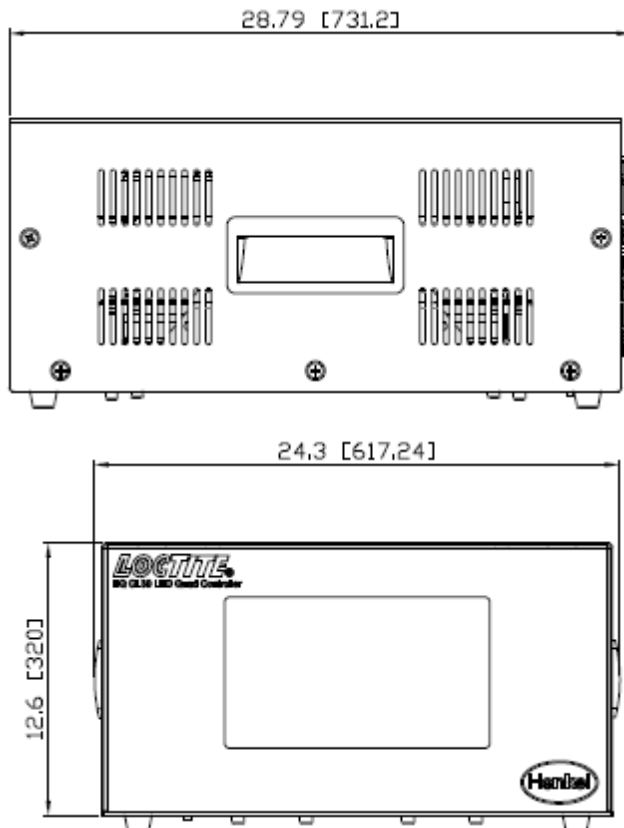
- Dimensions (L x H x W): 600x340x733.2 mm
- Total weight: lbs. (Kg) 14
- Operating voltage: 110~240 VAC 50/60Hz
- Power consumption: 1500 Watts
- Recommend Operating Temperature: +10 ° C to +40 ° C (+50 ° F to +104 ° F)
- Recommend Storage Temperature: -10 ° C to +60 ° C (+14 ° F to +140 ° F)

## Optional Accessories

- CL30 365nm LED Flood Head (item # 2139182)

- CL30 380nm LED Flood Head (item # 2139181)
- CL30 405nm LED Flood Head (item # 2139180)
- LED Head 375nm Array (item # 1167582)
- LED Head 405nm Array (item # 1167593)
- LED Power Cable (item # 1333333)
- UV V Light Radiometer Dosimeter (item # 1265282)
- UV A/B Light Radiometer Dosimeter (item # 1390323)
- Radiometer Adapter with Light Filter (item # 1403403)
- Footswitch (item # 88653)

## Dimension (mm)



### Note

The data contained herein are furnished for information only and are believed to be reliable. We cannot assume responsibility for the results obtained by others over whose methods we have no control. It is the user's responsibility to determine suitability for the user's purpose of any production methods mentioned herein and to adopt such precautions as may be advisable for the protection of property and of persons against any hazards that may be involved in the handling and use thereof. In light of the foregoing, Henkel Corporation specifically disclaims all warranties expressed or implied, including warranties of merchantability or fitness for a particular

purpose, arising from sale or use of Henkel Corporation's products. Henkel Corporation specifically disclaims any liability for consequential or incidental damages of any kind, including lost profits. The discussion herein of various processes or compositions is not to be interpreted as representation that they are free from domination of patents owned by others or as a license under any Henkel Corporation patents that may cover such processes or compositions. We recommend that each prospective user test his proposed application before repetitive use, using this data as a guide. This product may be covered by one or more United States or foreign patents or patent applications.

**Trademark usage**

Except as otherwise noted, all trademarks in this document are trademarks of Henkel Corporation in the U.S. and elsewhere. ® denotes a trademark registered in the U.S. Patent and Trademark Office.

Document # 9001273, Rev A, Date: 01/25/2018

Henkel Americas

1-800-LOCTITE

[www.equipment.loctite.com](http://www.equipment.loctite.com)

Henkel Europe

+49.89.320800.1800

[www.henkel.com/industrial](http://www.henkel.com/industrial)

Henkel Asia Pacific

+86.400 821 2567

[www.henkel.com/industrial](http://www.henkel.com/industrial)

## X-ON Electronics

Largest Supplier of Electrical and Electronic Components

*Click to view similar products for [Controllers](#) category:*

*Click to view products by [Henkel](#) manufacturer:*

Other Similar products are found below :

[61FGPN8DAC120](#) [CV500SLK21](#) [70177-1011](#) [F03-03 HAS C](#) [F03-31](#) [81550401](#) [FT1A-C12RA-W](#) [88981106](#) [H2CAC24A](#) [H2CRSAC110B](#)  
[R88A-CRGB003CR-E](#) [R88ARR080100S](#) [R88A-TK01K](#) [DCN1-1](#) [AFP0RT32CT](#) [DRT2ID08C](#) [DTB4896VRE](#) [DTB9696CVE](#)  
[DTB9696LVE](#) [E53-AZ01](#) [E53E01](#) [E53E8C](#) [E5C4Q40J999FAC120](#) [E5CWLQ1TCAC100240](#) [E5GNQ03PFLKACDC24](#) [B300LKL21](#)  
[NSCXDC1V3](#) [NSH5-232CW-3M](#) [NT20SST122BV1](#) [NV-CN001](#) [OAS-160-N](#) [C40PEDRA](#) [K31S6](#) [K33-L1B](#) [K3MA-F](#) [100-240VAC](#)  
[K3TX-AD31A](#) [89750101](#) [L595020](#) [SRM1-C02](#) [SRS2-1](#) [G32X-V2K](#) [26546803](#) [26546805](#) [PWRA440A](#) [CPM1AETL03CH](#) [CV500SLK11](#)  
[3G2A5BI081](#) [3G2A5IA122](#) [3G2A5LK010E](#) [3G2A5OA223](#)