

**H2TCM2-43X+**



10-4000 MHz

50Ω 1:2 Transmission Line Transformer

**Features**

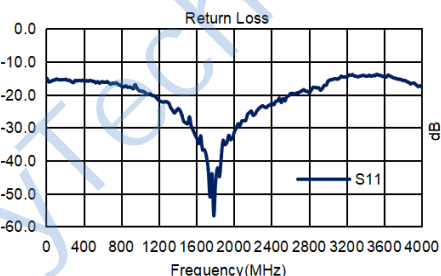
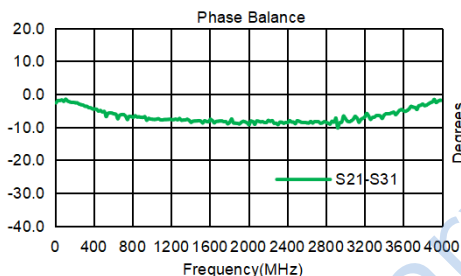
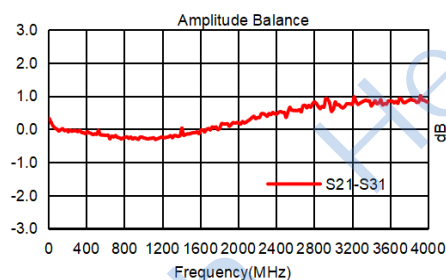
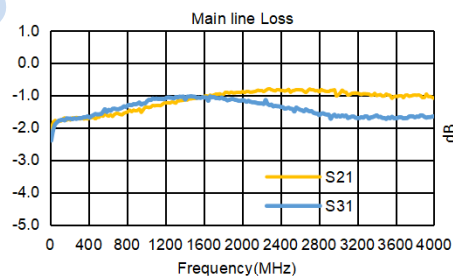
- RF Power, 0.4W
- DC Current, 30mA
- Operating temperature range: -40°C to +85°C
- Storage temperature range: -55°C to +100°C
- 260°C Reflow Compatible
- RoHS compliant and lead free

**Applications**

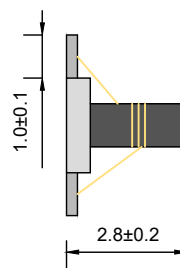
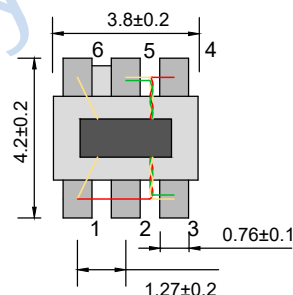
- Impedance matching
- Balanced amplifier
- Balun
- Cellular and VHF

**Electrical Specifications: TA=25°C, 0dBm, Z0=50Ω**

Parameter	Test Conditions	Units	Min	Typ	Max
Main line Loss (Pin4-3)	10-4000MHz	dB	—	1.2	2.5
Main line Loss (Pin4-1)	10-4000MHz	dB	—	1.5	2.5
Amplitude Balance	10-4000MHz	dB	0.0	1.0	2.0
Phase Balance	10-4000MHz	°	0.0	8.0	15.0
Input Return Loss(Pin4)	10-4000MHz	dB	12.0	16.0	—

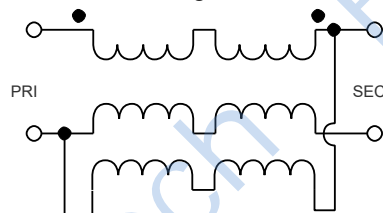


**Outline Drawing(mm)**

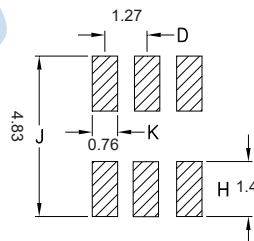


**Electrical structure**

Fig G



**Recommended layout(mm)**



**Pin Connections**

Input	4
Output 1	3
Output 2	1
Ground	5,6
Not Used	2

## X-ON Electronics

Largest Supplier of Electrical and Electronic Components

*Click to view similar products for [Signal Conditioning](#) category:*

*Click to view products by [HenryTech](#) manufacturer:*

Other Similar products are found below :

[PD0409J5050S2HF](#) [HHS-109-PIN](#) [AFS14A35-1591.50-T3](#) [JP510S](#) [LFB322G45SN1A504](#) [SF2159E](#) [FM-104-PIN](#) [CER0813B](#)

[MAPDCC0005](#) [3A325](#) [BD0810N50100AHF](#) [DC0710J5005AHF](#) [DC2327J5005AHF](#) [LFL15869MTC1B787](#) [X3C19F1-20S](#)

[CDBLB455KCAX39-B0](#) [RF1353C](#) [051157-0000](#) [PD0922J5050D2HF](#) [600S150FTRB](#) [1E1305-3](#) [1F1304-3S](#) [TP-103-PIN](#)

[BD1222J50200AHF](#) [BD1722J50100AHF](#) [2450DP39K5400E](#) [BD0810J50150AHF](#) [BD1722J50200AHF](#) [DS-327-PIN](#) [MACP-008125-](#)

[CK07F0](#) [DS-329-PIN](#) [DS-313-PIN](#) [TP-104-PIN](#) [TP-101-PIN](#) [HH-128-PIN](#) [8594810000](#) [T-1000-N](#) [JP506S](#) [XC0900P-10S](#) [XC0900B-30S](#)

[CHE1260-QAG](#) [11305-10](#) [5962-9091202MXA](#) [3A412S](#) [X3C06A4-03S](#) [B39000Z3410A4](#) [DSS-333-PIN](#) [PD2425J5050S2HF](#)

[B39242B4360P810](#) [B39781B8005P810](#)