

H3-MABA-007871-CT1A40

5-3000MHz 50Ω 1:1 Balun

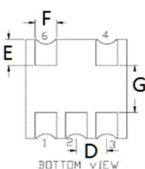
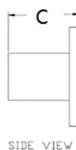
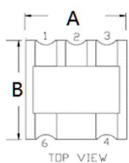
APPLICATIONS

Ideally suited for high volume cellular and wireless application.

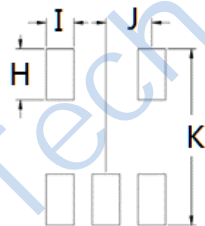
FEATURES

- Surface mount
- Impedance ratio: 1:1
- Available on tape and reel
- RoHS compliant and Pb free
- 260°C reflow compatible

DIMENSIONS



Land Pattern



A	B	C	D	H	I	J
4.21	4.21	2.63	1.27	1.40	0.76	1.27
E	F	G		K		
1.11	0.90	2.00		4.83		

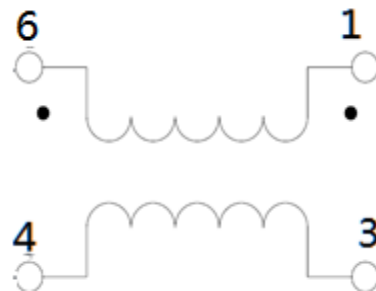
Unless otherwise stated dimensions are in mm

Tolerance: .xx ± 0.25, .xxx ± 0.05

ELECTRICAL SPECIFICATIONS@25°C:

Parameters (P#: ENA PORT)	frequency band	Min.	Typ.	Max.	Unit
Port Impedance, Z0 (P1 / P2 / P3)			50/ 25/ 25		Ohm
Insertion Loss	5-50MHz		0.3	2.5	dB
	50-975MHz		0.4	0.6	dB
	975-1525MHz		0.3	1.0	dB
	1525-2150MHz		0.7	2.3	dB
	2150-3000MHz		2.5	6.0	dB
Amplitude Balance	5-50MHz		0.5	0.8	dB
	50-975MHz		0.2	0.7	dB
	975-1525MHz		0.2	0.7	dB
	1525-2150MHz		0.4	0.9	dB
	2150-3000MHz		0.1	1.6	dB
Phase Balance (Nominal 180°)	5-50MHz		6.5	50	°
	50-975MHz		0.1	5.0	°
	975-1525MHz		0.1	4	°
	1525-2150MHz		3	12	°
	2150-3000MHz		13	35	°
Input Return Loss	5-50MHz	12.0	28.0		dB
	50-975MHz	15.0	23.0		dB
	975-1525MHz	13.0	21.0		dB
	1525-2150MHz	6.0	12.0		dB
	2150-3000MHz	3.0	6.0		dB

FUNCTIONAL SCHEMATIC



PIN CONFIGURATION

Pin No.	Function
1	Secondary Dot
2	Not Connected
3	Secondary
4	Primary
6	Primary Dot

ABSOLUTE MAXIMUM RATINGS

Parameter	Value
Input Power	250mW MAX
DC Current	30mA MAX
Operating Temperature Range	-40 to 85°C

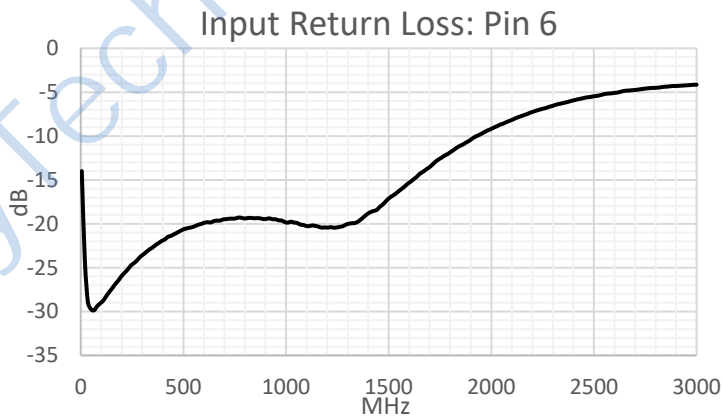
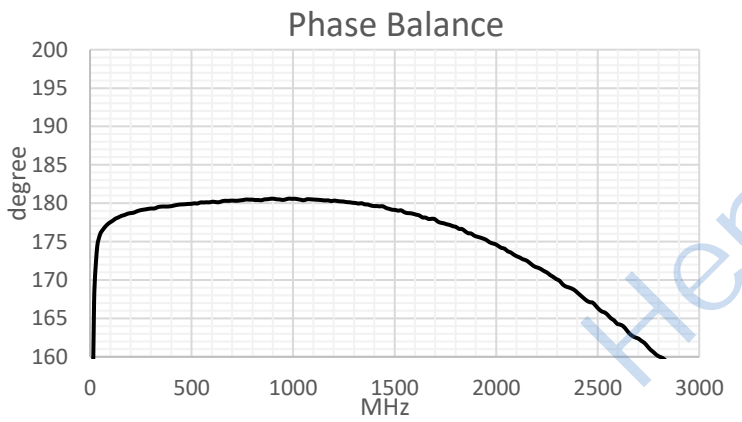
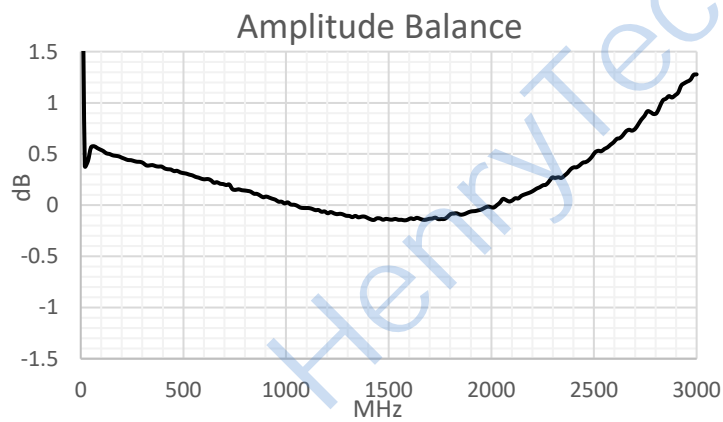
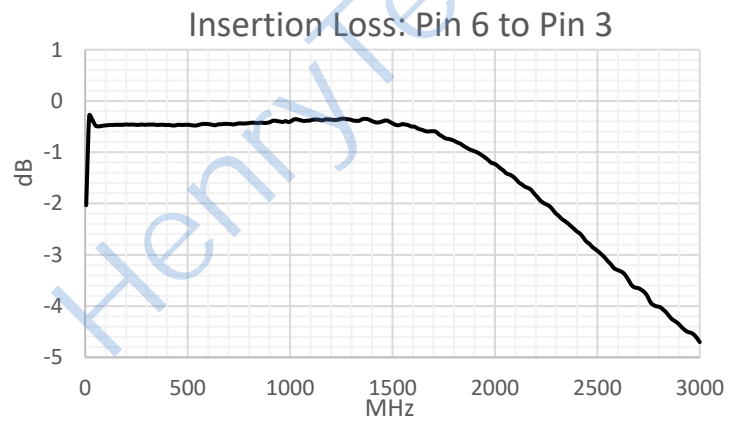
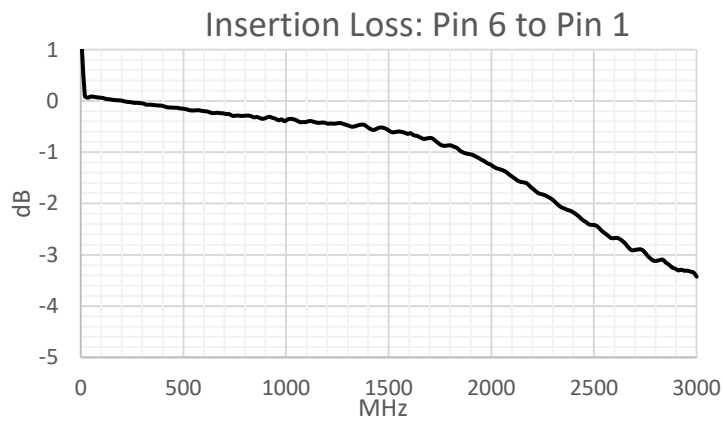
Tel: +86-28-85589664

E-mail: mr_li@henglitaitech.com

Web: www.hltchips.com

Adress: No.198 Tianqin East Street, Gaoxin West District, Chengdu City

TEST CURVE



X-ON Electronics

Largest Supplier of Electrical and Electronic Components

Click to view similar products for [Signal Conditioning](#) category:

Click to view products by [HenryTech](#) manufacturer:

Other Similar products are found below :

[PD0409J5050S2HF](#) [HHS-109-PIN](#) [AFS14A35-1591.50-T3](#) [JP510S](#) [LFB322G45SN1A504](#) [SF2159E](#) [FM-104-PIN](#) [CER0813B](#)
[MAPDCC0005](#) [3A325](#) [BD0810N50100AHF](#) [DC0710J5005AHF](#) [DC2327J5005AHF](#) [LFL15869MTC1B787](#) [X3C19F1-20S](#)
[CDBLB455KCAX39-B0](#) [RF1353C](#) [051157-0000](#) [PD0922J5050D2HF](#) [600S150FTRB](#) [1E1305-3](#) [1F1304-3S](#) [TP-103-PIN](#)
[BD1222J50200AHF](#) [BD1722J50100AHF](#) [2450DP39K5400E](#) [BD0810J50150AHF](#) [BD1722J50200AHF](#) [DS-327-PIN](#) [MACP-008125-](#)
[CK07F0](#) [DS-329-PIN](#) [DS-313-PIN](#) [TP-104-PIN](#) [TP-101-PIN](#) [HH-128-PIN](#) [8594810000](#) [T-1000-N](#) [JP506S](#) [XC0900P-10S](#) [XC0900B-30S](#)
[CHE1260-QAG](#) [11305-10](#) [5962-9091202MXA](#) [3A412S](#) [X3C06A4-03S](#) [B39000Z3410A4](#) [DSS-333-PIN](#) [PD2425J5050S2HF](#)
[B39242B4360P810](#) [B39781B8005P810](#)