

H3-MABA-011028

600-1700MHz 50Ω 1:1 Balun

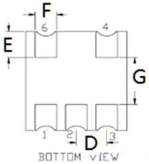
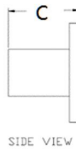
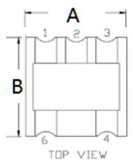
• APPLICATIONS

• Ideally suited for high volume cellular and wireless application.

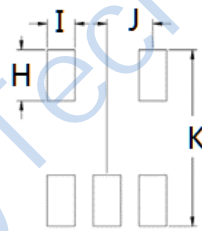
• FEATURES

- Surface mount
- Impedance ratio: 1:1
- Available on tape and reel
- RoHS compliant and Pb free
- 260°C reflow compatible

DIMENSIONS



Land Pattern



A	B	C	D	H	I	J
4.21	4.21	2.63	1.27	1.40	0.76	1.27
E	F	G		K		
1.11	0.90	2.00		4.83		

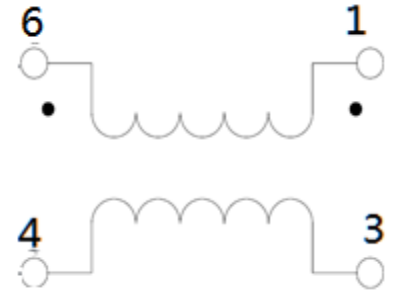
Unless otherwise stated dimensions are in mm

Tolerance: .xx ± 0.25, .xxx ± 0.05

ELECTRICAL SPECIFICATIONS@25°C:

Parameters (P#: ENA PORT)	frequency band	Min.	Typ.	Max.	Unit
Port Impedance, Z0 (P1 / P2 / P3)			50/ 25/ 25		Ohm
Insertion Loss (Pin6 - Pin1)	600-1000MHz		0.3	0.6	dB
	1000-1300MHz		0.5	0.8	dB
	1300-1700MHz		0.8	1.3	dB
Insertion Loss (Pin6 - Pin3)	600-1000MHz		0.4	0.6	dB
	1000-1300MHz		0.3	0.6	dB
	1300-1700MHz		0.3	1.0	dB
Amplitude Balance	600-1000MHz		0.1	0.5	dB
	1000-1300MHz		0.2	0.9	dB
	1300-1700MHz		0.5	1.2	dB
Phase Balance (Nominal 180°)	600-1000MHz		1	4	°
	1000-1300MHz		1.0	4	°
	1300-1700MHz		0.1	5	°
Input Return Loss	600-1000MHz	15.0	30.0		dB
	1000-1300MHz	14.0	28.0		dB
	1300-1700MHz	13.0	22.0		dB

FUNCTIONAL SCHEMATIC



PIN CONFIGURATION

Pin No.	Function
1	Secondary Dot
2	Not Connected
3	Secondary
4	Primary
6	Primary Dot

ABSOLUTE MAXIMUM RATINGS

Parameter	Value
Input Power	250mW MAX
DC Current	30mA MAX
Operating Temperature Range	-40 to 85°C

Tel: +86-28-85589664

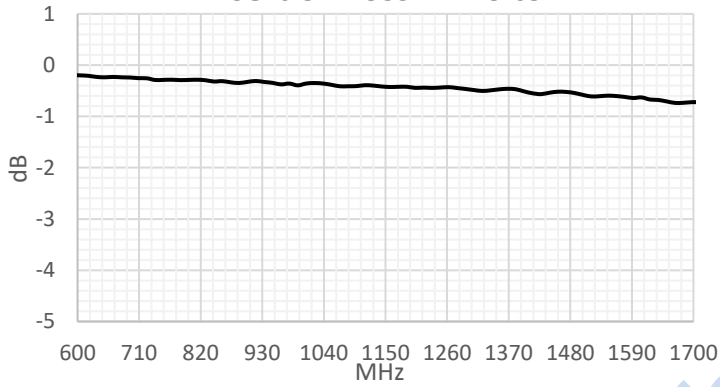
E-mail: mr_li@henglitaitech.com

Web: www.hltchips.com

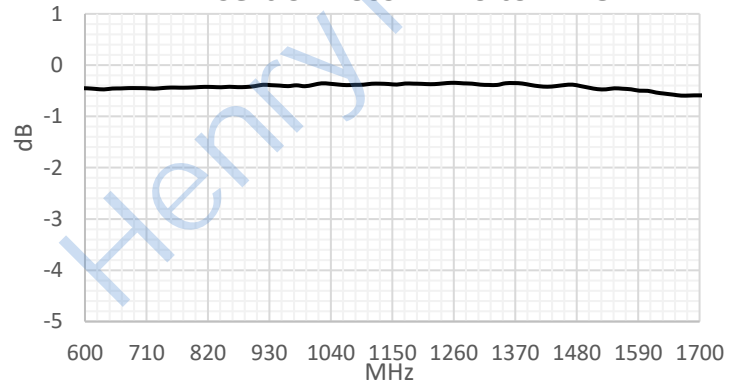
Adress: No.198 Tianqin East Street, Gaoxin West District, Chengdu City

TEST CURVE

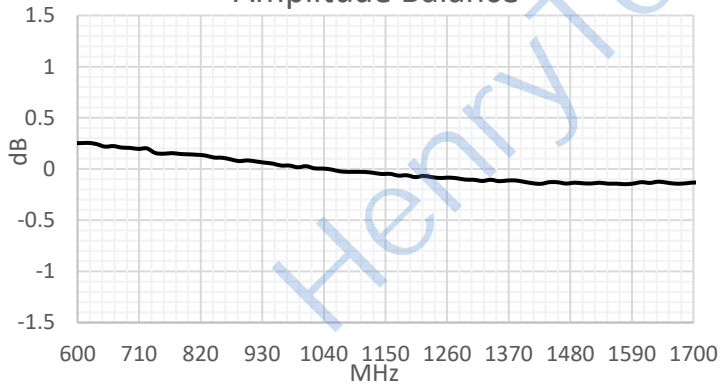
Insertion Loss: Pin 6 to Pin 1



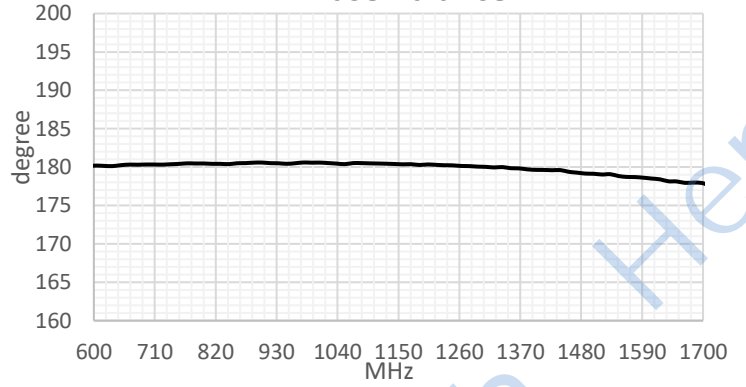
Insertion Loss: Pin 6 to Pin 3



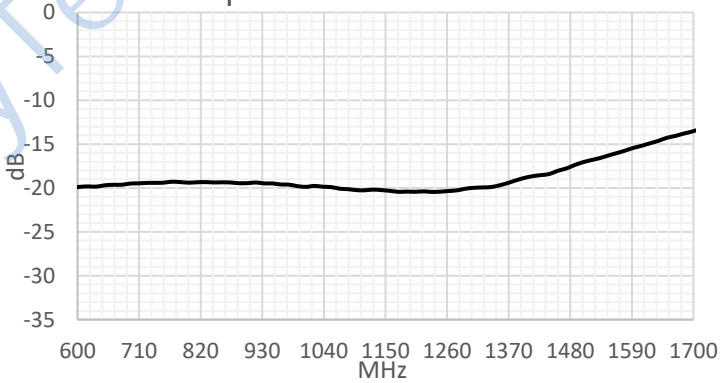
Amplitude Balance



Phase Balance



Input Return Loss: Pin 6



X-ON Electronics

Largest Supplier of Electrical and Electronic Components

Click to view similar products for [Signal Conditioning](#) category:

Click to view products by [HenryTech](#) manufacturer:

Other Similar products are found below :

[PD0409J5050S2HF](#) [HHS-109-PIN](#) [AFS14A35-1591.50-T3](#) [JP510S](#) [LFB322G45SN1A504](#) [SF2159E](#) [FM-104-PIN](#) [CER0813B](#)

[MAPDCC0005](#) [3A325](#) [BD0810N50100AHF](#) [DC0710J5005AHF](#) [DC2327J5005AHF](#) [LFL15869MTC1B787](#) [X3C19F1-20S](#)

[CDBLB455KCAX39-B0](#) [RF1353C](#) [051157-0000](#) [PD0922J5050D2HF](#) [600S150FTRB](#) [1E1305-3](#) [1F1304-3S](#) [TP-103-PIN](#)

[BD1222J50200AHF](#) [BD1722J50100AHF](#) [2450DP39K5400E](#) [BD0810J50150AHF](#) [BD1722J50200AHF](#) [DS-327-PIN](#) [MACP-008125-](#)

[CK07F0](#) [DS-329-PIN](#) [DS-313-PIN](#) [TP-104-PIN](#) [TP-101-PIN](#) [HH-128-PIN](#) [8594810000](#) [T-1000-N](#) [JP506S](#) [XC0900P-10S](#) [XC0900B-30S](#)

[CHE1260-QAG](#) [11305-10](#) [5962-9091202MXA](#) [3A412S](#) [X3C06A4-03S](#) [B39000Z3410A4](#) [DSS-333-PIN](#) [PD2425J5050S2HF](#)

[B39242B4360P810](#) [B39781B8005P810](#)