

H3-MACP-009945-CH0670

5-1200MHz 75Ω 17.5dB Coupler

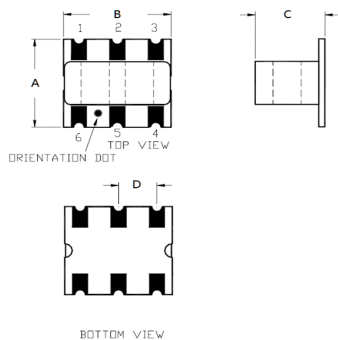
APPLICATIONS

• Ideally suited for CATV Broadband applications.

FEATURES

- Surface mount
- 17.5dB Coupler
- RoHS compliant and Pb free
- Available on tape and reel

DIMENSIONS

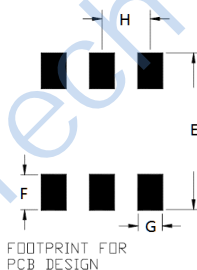


A	B	C
6.35	7.11	4.84±10%
D		
2.54		

Unless otherwise stated dimensions are in mm

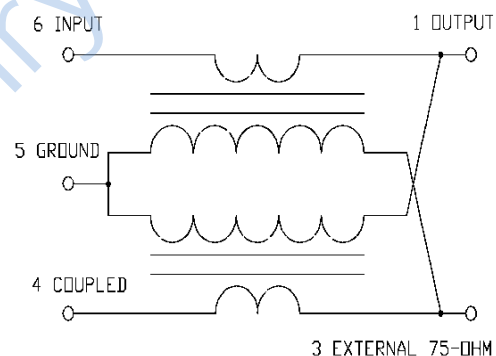
Tolerance: .xx ± 0.25, .xxx ± 0.05

Land Pattern



E	F	G
7.87	1.78	1.27
H		
2.54		

FUNCTIONAL SCHEMATIC



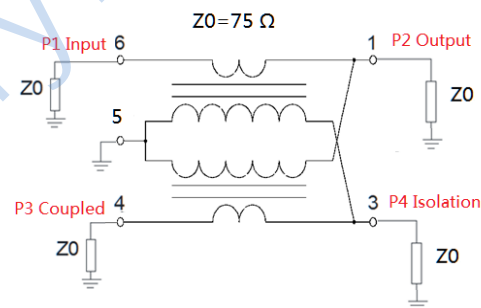
PIN CONFIGURATION

Pin No.	Function
1	Output
2	Not Connected
3	External 75 Ohm
4	Coupled
5	Ground
6	Input

ELECTRICAL SPECIFICATIONS@25°C:

Parameters (P#: ENA PORT)	frequency band	Min.	Typ.	Max.	Unit
Port Impedance, Z0(P1/P2/P3/P4)			75/75/75/75		Ohm
Coupling (pin6-4)	5 - 1002 MHz	17.0	17.5	18.0	dB
	1002 - 1200 MHz	16.5	17.5	18.5	dB
Main Line Loss (pin6-1)	5 - 870 MHz		0.5	1	dB
	870 - 1002 MHz		0.9	1.2	dB
	1002 - 1200 MHz		1.2	1.6	dB
Input Return Loss (pin6)	5 - 870 MHz	22	27		dB
	870 - 1002 MHz	20	26		dB
	1002 - 1200 MHz	16	24		dB
Output Return Loss (pin1)	5 - 870 MHz	22	33		dB
	870 - 1002 MHz	18	23		dB
	1002 - 1200 MHz	15	19		dB
Coupled Return Loss (pin4)	5 - 870 MHz	22	28		dB
	870 - 1002 MHz	20	23		dB
	1002 - 1200 MHz	18	21		dB
Directivity	5 - 200 MHz	30	40		dB
	200 - 1002 MHz	8	15		dB
	1002 - 1200 MHz	4	10		dB

APPLICATION & TEST CIRCUIT



ABSOLUTE MAXIMUM RATINGS

Parameter	Value
Input RF Power	250mW Max
DC Current	30mA Max
Operating Temperature Range	-40 to 85°C

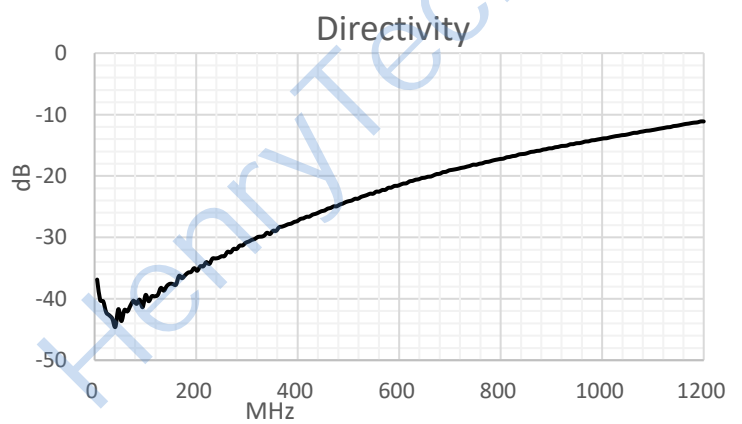
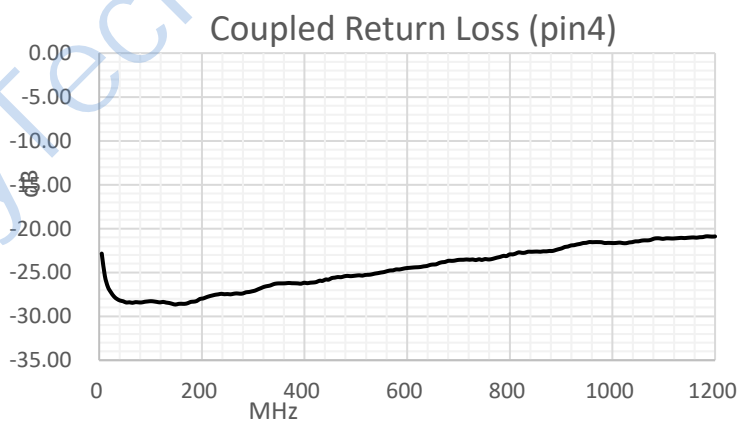
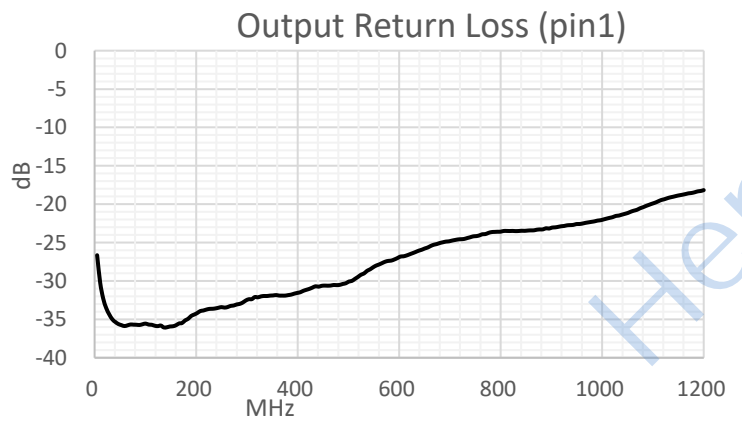
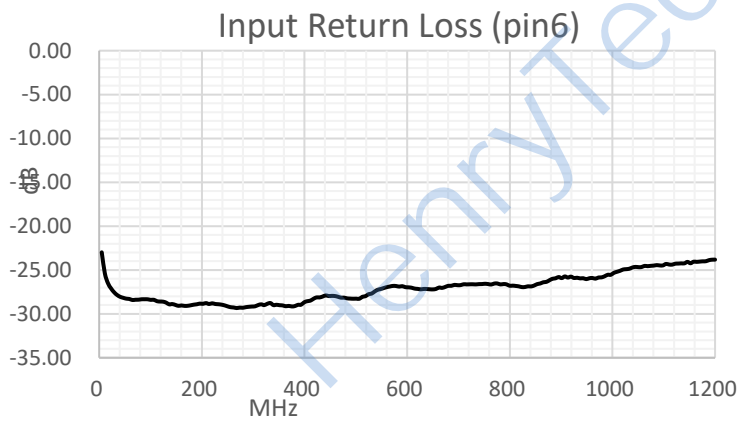
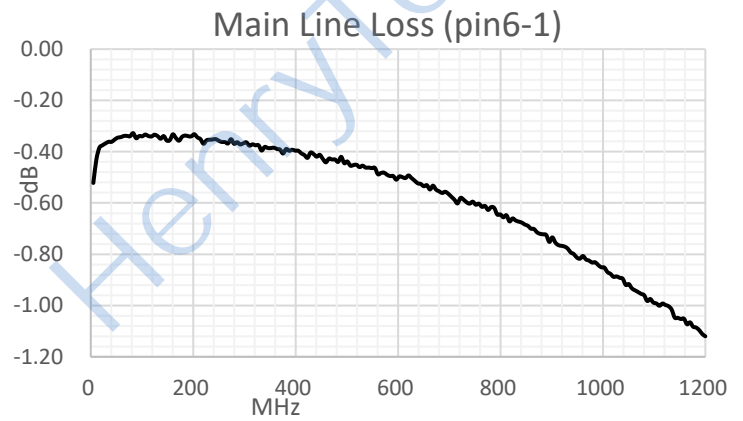
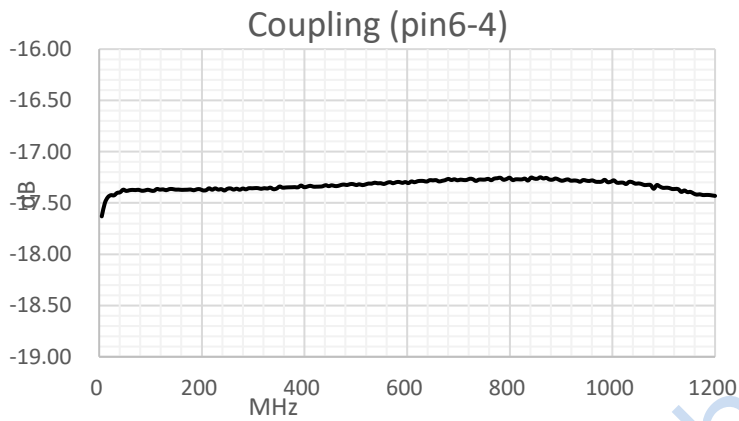
Tel: +86-28-85589664

E-mail: mr_li@henglitaitech.com

Web: www.hltchips.com

Address: No.198 Tianqin East Street, Gaoxin West District, Chengdu City

TEST CURVE



X-ON Electronics

Largest Supplier of Electrical and Electronic Components

Click to view similar products for [Signal Conditioning](#) category:

Click to view products by [HenryTech](#) manufacturer:

Other Similar products are found below :

[PD0409J5050S2HF](#) [HHS-109-PIN](#) [AFS14A35-1591.50-T3](#) [JP510S](#) [LFB322G45SN1A504](#) [SF2159E](#) [FM-104-PIN](#) [CER0813B](#)
[MAPDCC0005](#) [3A325](#) [BD0810N50100AHF](#) [DC0710J5005AHF](#) [DC2327J5005AHF](#) [LFL15869MTC1B787](#) [X3C19F1-20S](#)
[CDBLB455KCAX39-B0](#) [RF1353C](#) [051157-0000](#) [PD0922J5050D2HF](#) [600S150FTRB](#) [1E1305-3](#) [1F1304-3S](#) [TP-103-PIN](#)
[BD1222J50200AHF](#) [BD1722J50100AHF](#) [2450DP39K5400E](#) [BD0810J50150AHF](#) [BD1722J50200AHF](#) [DS-327-PIN](#) [MACP-008125-](#)
[CK07F0](#) [DS-329-PIN](#) [DS-313-PIN](#) [TP-104-PIN](#) [TP-101-PIN](#) [HH-128-PIN](#) [8594810000](#) [T-1000-N](#) [JP506S](#) [XC0900P-10S](#) [XC0900B-30S](#)
[CHE1260-QAG](#) [11305-10](#) [5962-9091202MXA](#) [3A412S](#) [X3C06A4-03S](#) [B39000Z3410A4](#) [DSS-333-PIN](#) [PD2425J5050S2HF](#)
[B39242B4360P810](#) [B39781B8005P810](#)