

H3-MAPDCT0027

5-1000MHz 75Ω 2 Way Power Divider

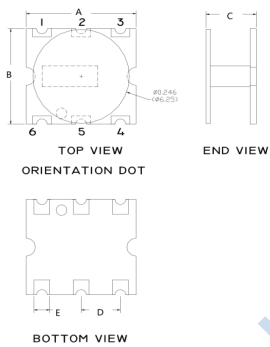
APPLICATIONS

• Ideally suitable for CATV applications.

FEATURES

- Surface mount
- 2 Way 0 degree
- 260°C reflow compatible
- RoHS compliant and Pb free
- Available on tape and reel

DIMENSIONS

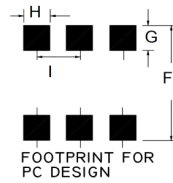


A	B	C
7.11	6.35	3.25
D	E	
2.54	1.02	

Unless otherwise stated dimensions are in mm

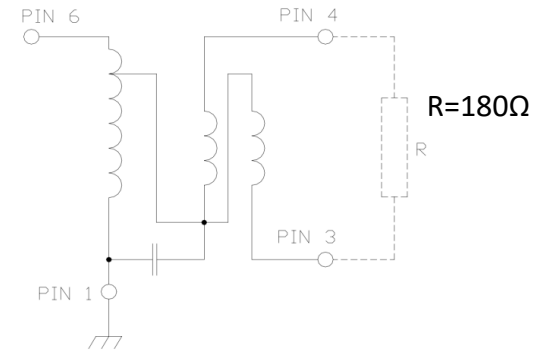
Tolerance: .xx ± 0.25, .xxx ± 0.05

PCB LAYOUT



F	G	H
7.87	1.78	1.27
I		
2.54		

FUNCTIONAL SCHEMATIC



PIN CONFIGURATION

Pin No.	Function
1	Ground
2	Not connected (ground)
3	Output 2
4	Output 1
5	Not connected (ground)
6	Input

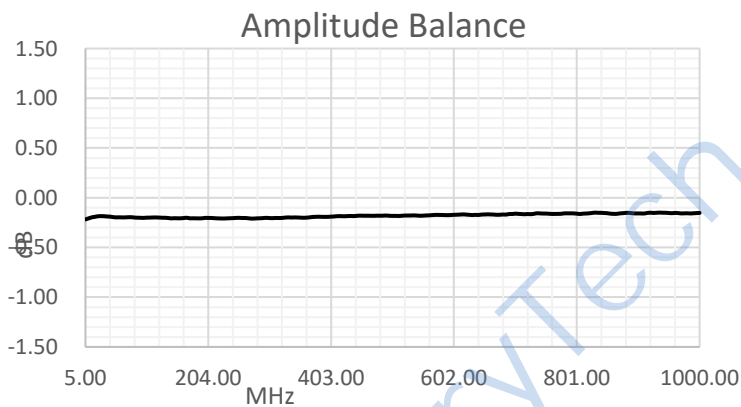
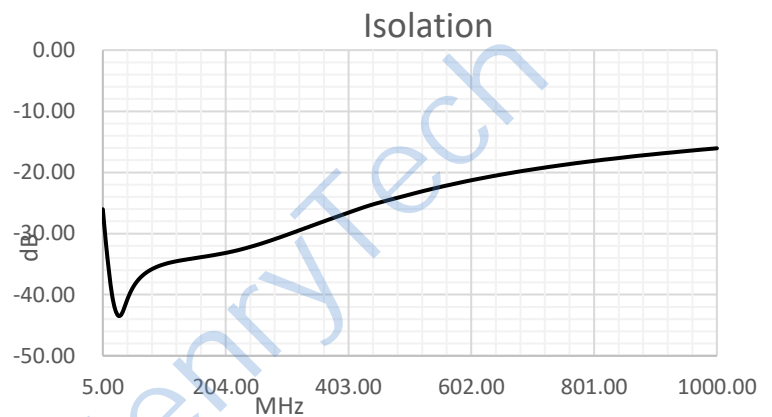
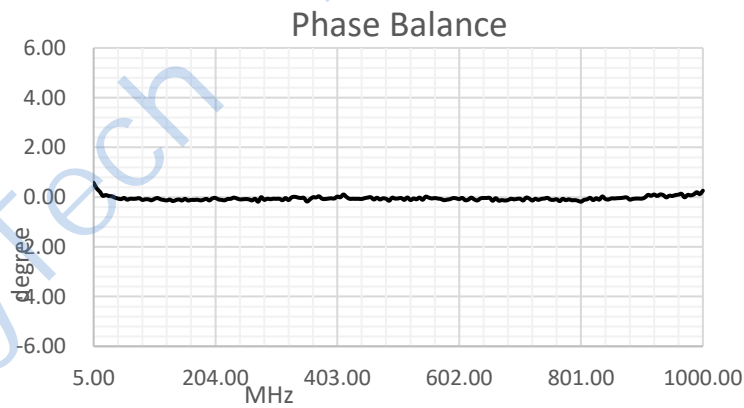
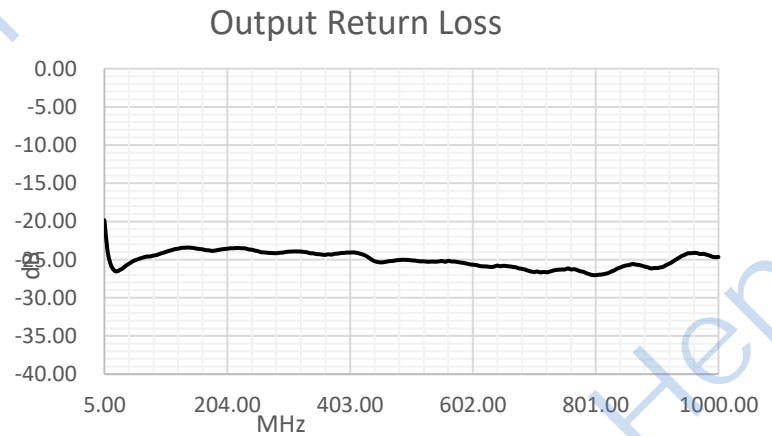
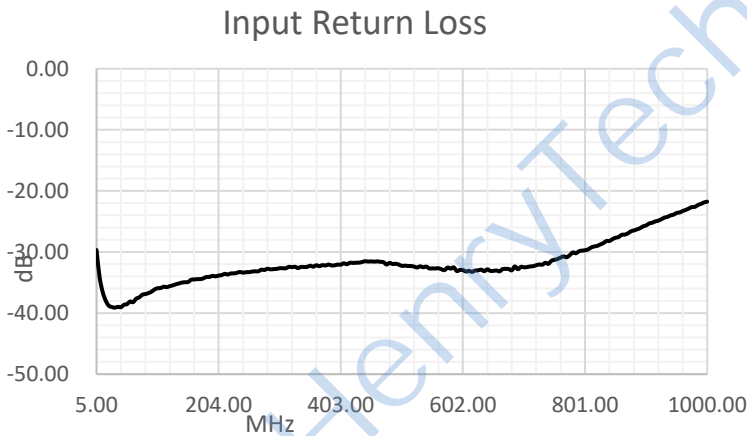
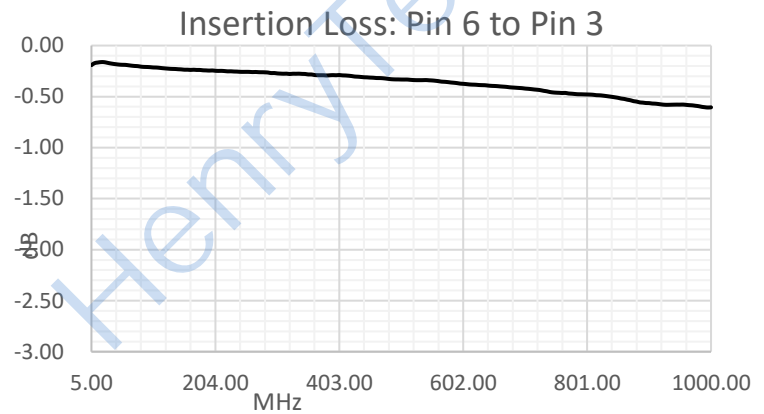
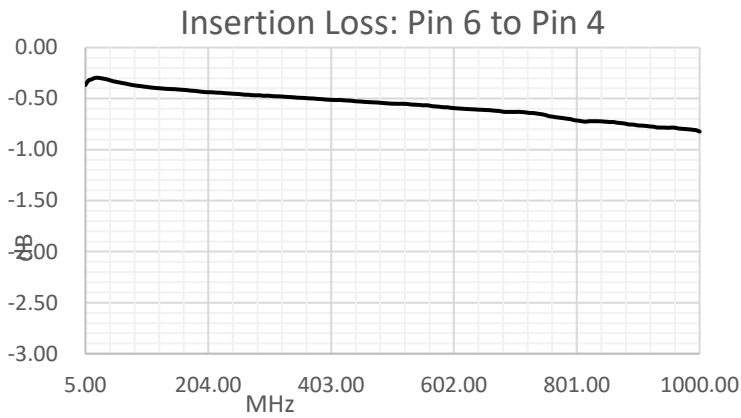
ELECTRICAL SPECIFICATIONS@25°C:

Parameters (P#: ENA PORT)	frequency band	Min.	Typ.	Max.	Unit
Port Impedance, Z0			75		Ohm
Insertion Loss(Above 3dB)	5-500MHz		0.4	0.7	dB
	500-1000MHz		0.7	1.0	dB
Input Return Loss	5-700MHz	25	33		dB
	700 - 870 MHz	22	30		dB
	870 - 1000 MHz	18	26		dB
Output Return Loss	5-40MHz	15	24		dB
	40 - 1000 MHz	119	25		dB
Isolation	5-500MHz	20	27		dB
	500 - 1000 MHz	15	20		dB
Amplitude Balance	5-500MHz		0.28	0.40	dB
	500 - 1000 MHz		0.32	0.60	dB
Phase Balance	5-1000MHz		1	3	Deg

ABSOLUTE MAXIMUM RATINGS

Parameter	Value
Input RF Power	1W Max
DC current	240mA Max
Operating Temperature Range	-40 to 85°C
Storage Temperature Range	-55 to 100°C

TEST CURVE



X-ON Electronics

Largest Supplier of Electrical and Electronic Components

Click to view similar products for [Signal Conditioning](#) category:

Click to view products by [HenryTech](#) manufacturer:

Other Similar products are found below :

[PD0409J5050S2HF](#) [HHS-109-PIN](#) [AFS14A35-1591.50-T3](#) [JP510S](#) [LFB322G45SN1A504](#) [SF2159E](#) [FM-104-PIN](#) [CER0813B](#)
[MAPDCC0005](#) [3A325](#) [BD0810N50100AHF](#) [DC0710J5005AHF](#) [DC2327J5005AHF](#) [LFL15869MTC1B787](#) [X3C19F1-20S](#)
[CDBLB455KCAX39-B0](#) [RF1353C](#) [051157-0000](#) [PD0922J5050D2HF](#) [600S150FTRB](#) [1E1305-3](#) [1F1304-3S](#) [TP-103-PIN](#)
[BD1222J50200AHF](#) [BD1722J50100AHF](#) [2450DP39K5400E](#) [BD0810J50150AHF](#) [BD1722J50200AHF](#) [DS-327-PIN](#) [MACP-008125-](#)
[CK07F0](#) [DS-329-PIN](#) [DS-313-PIN](#) [TP-104-PIN](#) [TP-101-PIN](#) [HH-128-PIN](#) [8594810000](#) [T-1000-N](#) [JP506S](#) [XC0900P-10S](#) [XC0900B-30S](#)
[CHE1260-QAG](#) [11305-10](#) [5962-9091202MXA](#) [3A412S](#) [X3C06A4-03S](#) [B39000Z3410A4](#) [DSS-333-PIN](#) [PD2425J5050S2HF](#)
[B39242B4360P810](#) [B39781B8005P810](#)