

## H3-TC4-19+

10-1900MHz 50Ω 1:4 Balun

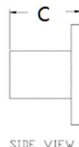
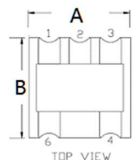
### APPLICATIONS

- Ideally suitable for PCS, wideband push-pull amplifiers and cellular applications.

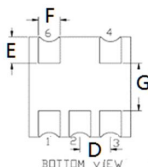
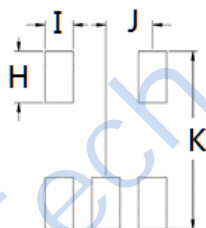
### FEATURES

- Surface mount
- Impedance ratio: 1:4
- Balanced transmission line
- RoHS compliant
- 260°C reflow compatible

### DIMENSIONS



### Land Pattern



A	B	C	D	H	I	J
4.21	4.21	2.70	1.27	1.40	0.76	1.27
E	F	G		K		
1.11	0.90	2.00		4.83		

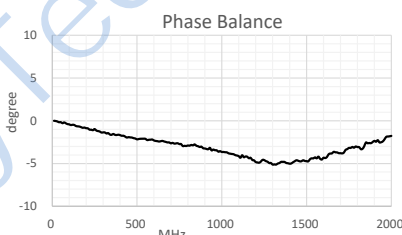
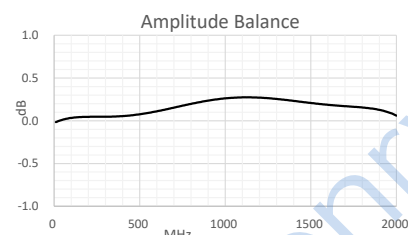
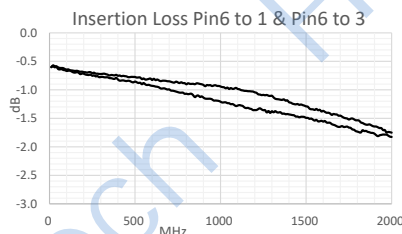
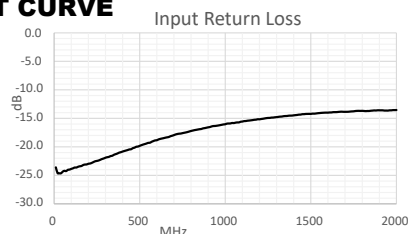
Unless otherwise stated dimensions are in mm

Tolerance: .xx ± 0.25, .xxx ± 0.05

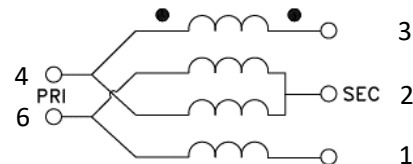
### ELECTRICAL SPECIFICATIONS@25°C:

Parameters (P#: ENA PORT)	frequency band	Min.	Typ.	Max.	Unit
Port Impedance, Z0 (P1 / P2 / P3)			50		Ohm
Insertion Loss	10-200MHz		0.7	1.0	dB
	200-1000MHz		1.3	2.0	dB
	1000-1900MHz		1.7	3.0	dB
Phase Balance	10-1900MHz		4.0	6.0	Deg
Amplitude Balance	10-1900MHz		0.4	2.0	dB
Return Loss	10-200MHz	16.0	23.0		dB
	200-1000MHz	7.0	16.0		dB
	1000-1900MHz	5.0	13.0		dB

### TEST CURVE



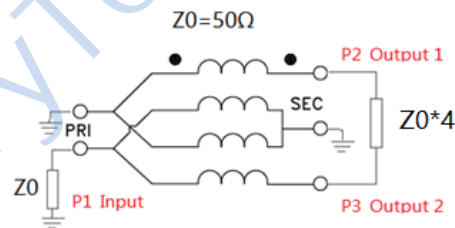
### FUNCTIONAL SCHEMATIC



### PIN CONFIGURATION

Pin No.	Function
1	Secondary
2	Secondary CT(Ground)
3	Secondary Dot
4	Primary(Ground)
6	Primary Dot

### APPLICATION & TEST CIRCUIT



### ABSOLUTE MAXIMUM RATINGS

Parameter	Value
Operating Temperature Range	0 to 85°C
Storage Temperature Range	-40 to 85°C

Tel: +86-28-85589664

E-mail: mr\_li@henglitaitech.com

Web: www.hltchips.com

Adress:No.198 Tianqin East Street, Gaoxin West District, Chengdu City

## X-ON Electronics

Largest Supplier of Electrical and Electronic Components

*Click to view similar products for [Signal Conditioning](#) category:*

*Click to view products by [HenryTech](#) manufacturer:*

Other Similar products are found below :

[PD0409J5050S2HF](#) [HHS-109-PIN](#) [AFS14A35-1591.50-T3](#) [JP510S](#) [LFB322G45SN1A504](#) [SF2159E](#) [FM-104-PIN](#) [CER0813B](#)

[MAPDCC0005](#) [3A325](#) [BD0810N50100AHF](#) [DC0710J5005AHF](#) [DC2327J5005AHF](#) [LFL15869MTC1B787](#) [X3C19F1-20S](#)

[CDBLB455KCAX39-B0](#) [RF1353C](#) [051157-0000](#) [PD0922J5050D2HF](#) [600S150FTRB](#) [1E1305-3](#) [1F1304-3S](#) [TP-103-PIN](#)

[BD1222J50200AHF](#) [BD1722J50100AHF](#) [2450DP39K5400E](#) [BD0810J50150AHF](#) [BD1722J50200AHF](#) [DS-327-PIN](#) [MACP-008125-](#)

[CK07F0](#) [DS-329-PIN](#) [DS-313-PIN](#) [TP-104-PIN](#) [TP-101-PIN](#) [HH-128-PIN](#) [8594810000](#) [T-1000-N](#) [JP506S](#) [XC0900P-10S](#) [XC0900B-30S](#)

[CHE1260-QAG](#) [11305-10](#) [5962-9091202MXA](#) [3A412S](#) [X3C06A4-03S](#) [B39000Z3410A4](#) [DSS-333-PIN](#) [PD2425J5050S2HF](#)

[B39242B4360P810](#) [B39781B8005P810](#)