

H3-TP-103-PIN

0.5-1000MHz 50Ω 1:4 Balun

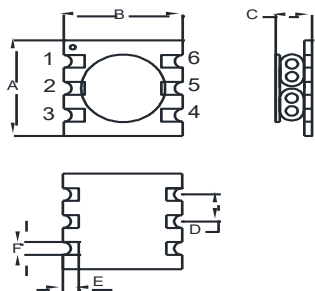
• APPLICATIONS

• Ideally suitable for PCS, wideband push-pull amplifiers and cellular applications.

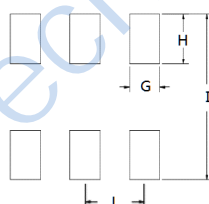
• FEATURES

- Surface mount
- Impedance ratio: 1:4
- Balanced transmission line
- RoHS compliant
- 260°C reflow compatible

DIMENSIONS



Land Pattern



A	B	C
9.00	9.00	3.8Max
D	E	F
2.54	1.20	1.20

G	H	I
1.30	2.15	10.00
J		
2.54		

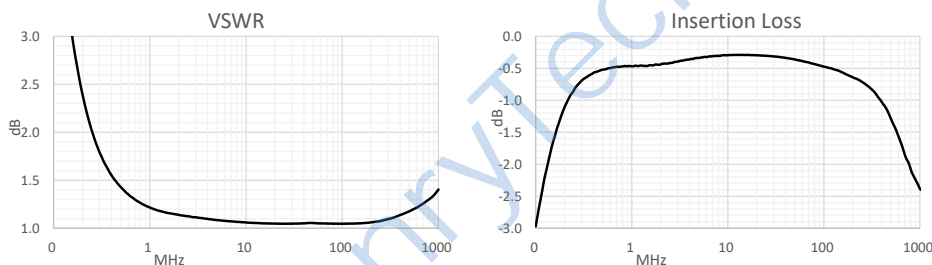
Unless otherwise stated dimensions are in mm

Tolerance: .xx ± 0.25, .xxx ± 0.05

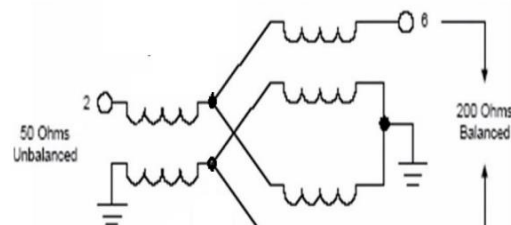
ELECTRICAL SPECIFICATIONS@25°C:

Parameters (P#: ENA PORT)	frequency band	Min.	Typ.	Max.	Unit
Impedance(Input: Unbalanced)			50		Ohm
Impedance(Output: Balanced)			200		Ohm
Insertion Loss	10 - 50 MHz		0.3	0.6	dB
VSWR	2 - 500 MHz			1.4	
	500 k - 1 GHz			2.0	
Input Power	500 k - 1 MHz			1	W
	1 - 5 MHz			1.5	W
	5M - 1 GHz			3	W
Rise Time (10% - 90%)			0.18		ns
Drop (10%)			160		ns

TEST CURVE



FUNCTIONAL SCHEMATIC



Pin Configuration

Pin No.	Function
1	Ground
2	Primary Dot
3	Ground
4	Secondary
5	Ground
6	Secondary Dot

ABSOLUTE MAXIMUM RATINGS

Parameter	Value
Operating Temperature Range	-55 to 85°C
Storage Temperature Range	-55 to 100°C

Tel: +86-28-85589664

E-mail: mr_li@henglitaitech.com

Web: www.hltchips.com

Adress: No.198 Tianqin East Street, Gaoxin West District, Chengdu City

X-ON Electronics

Largest Supplier of Electrical and Electronic Components

Click to view similar products for [Signal Conditioning](#) category:

Click to view products by [HenryTech](#) manufacturer:

Other Similar products are found below :

[PD0409J5050S2HF](#) [HHS-109-PIN](#) [AFS14A35-1591.50-T3](#) [JP510S](#) [LFB322G45SN1A504](#) [SF2159E](#) [FM-104-PIN](#) [CER0813B](#)

[MAPDCC0005](#) [3A325](#) [BD0810N50100AHF](#) [DC0710J5005AHF](#) [DC2327J5005AHF](#) [LFL15869MTC1B787](#) [X3C19F1-20S](#)

[CDBLB455KCAX39-B0](#) [RF1353C](#) [051157-0000](#) [PD0922J5050D2HF](#) [600S150FTRB](#) [1E1305-3](#) [1F1304-3S](#) [TP-103-PIN](#)

[BD1222J50200AHF](#) [BD1722J50100AHF](#) [2450DP39K5400E](#) [BD0810J50150AHF](#) [BD1722J50200AHF](#) [DS-327-PIN](#) [MACP-008125-](#)

[CK07F0](#) [DS-329-PIN](#) [DS-313-PIN](#) [TP-104-PIN](#) [TP-101-PIN](#) [HH-128-PIN](#) [8594810000](#) [T-1000-N](#) [JP506S](#) [XC0900P-10S](#) [XC0900B-30S](#)

[CHE1260-QAG](#) [11305-10](#) [5962-9091202MXA](#) [3A412S](#) [X3C06A4-03S](#) [B39000Z3410A4](#) [DSS-333-PIN](#) [PD2425J5050S2HF](#)

[B39242B4360P810](#) [B39781B8005P810](#)