

## Features

- excellent power handling
- Small size
- 7 sections
- temperature stable
- LTCC construction with great moisture resistance, corrosion resistance, and high reliability

## Applications

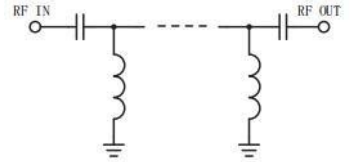
- sub-harmonic rejection
- transmitters/receivers
- base station of mobile communication and lab use

## HT-HFCN-3100+



50 Ω 3400 to 9900 MHz

### electrical schematic



### Pin Connections

RF IN	1
RF OUT	3
GROUND	2,4,5,6

### Maximum Ratings

Operating Temperature	-55°C to 100°C
Storage Temperature	-55°C to 100°C
RF Power Input	7W at 25°C

\* Passband rating, derate linearly to 3W at 100°C ambient.  
Permanent damage may occur if any of these limits are exceeded.

### Electrical Specifications (T<sub>AMB</sub>= 25° C)

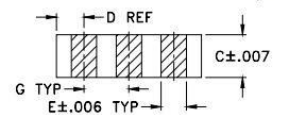
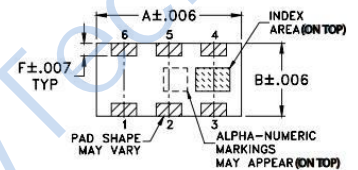
STOP BAND (MHz)		FCO(MHz) Nom.	PASS BAND (MHz)		VSWR (∶1)		POWER INPUT (W)	NO. OF SECTIONS
(Loss > 30dB)	(Loss > 20dB)	(Loss 3dB) Typ.	(Loss < 1.3dB) Max.	(Loss < 2dB) Typ.	Stopband Frequency (MHz) 1.6:1			
2400	2350	3020	3500-9500	3400-11000	20:1	3100-9000	7	5

Measured on Fenghua Characterization Test Board T-39.

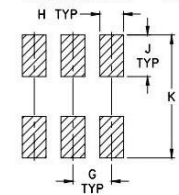
### Typical Performance Data at 25° C

Frequency (MHz)	Return Loss (dB)	VSWR (∶1)
50.53	60.36	228.3
800.00	39.11	57.97
1810.00	34.57	39.13
2350.00	38.81	26.36
2400.00	33.80	24.54
2700.00	15.08	13.52
2920.00	5.46	4.26
3100.00	1.89	1.50
3400.00	1.19	1.38
3500.00	1.14	1.45
5000.00	0.65	1.13
7000.00	0.62	1.12
9000.00	0.82	1.53
9500.00	0.99	1.76
9900.00	1.55	1.96
10500.00	1.33	2.15
11000.00	1.30	1.98

### Outline Drawing



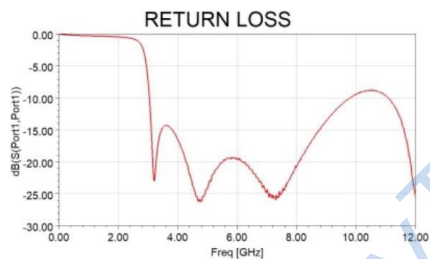
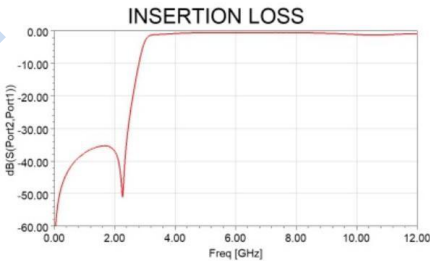
PCB Land Pattern Suggested Layout.



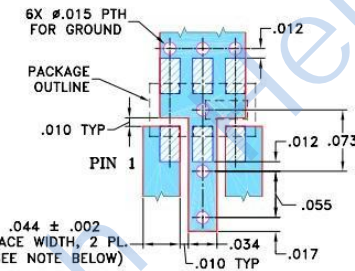
Suggested Layout Tolerance to be within ±0.02

### Outline Dimensions: Unit (mm)

A	3.20	B	1.60	C	0.89
D	0.61	E	0.56	F	0.28
G	0.99	H	0.61	J	1.07
K	3.12	wt			0.02g



### Demo Board P/N: TB-285 Suggested PCB Layout (PL-158)



**NOTE:** 1. TRACE WIDTH IS SHOWN FOR ROGERS RO4350 WITH DIELECTRIC THICKNESS: .020 ± .0015; COPPER: 1/2 OZ. EACH SIDE. FOR OTHER MATERIALS TRACE WIDTH MAY NEED TO BE MODIFIED.  
2. BOTTOM SIDE OF THE PCB IS CONTINUOUS GROUND PLANE.

- DENOTES PCB COPPER LAYOUT
- DENOTES COPPER LAND PATTERN FREE OF SOLDERMASHI

## X-ON Electronics

Largest Supplier of Electrical and Electronic Components

*Click to view similar products for [Signal Conditioning](#) category:*

*Click to view products by [HenryTech](#) manufacturer:*

Other Similar products are found below :

[PD0409J5050S2HF](#) [HHS-109-PIN](#) [AFS14A35-1591.50-T3](#) [JP510S](#) [LFB322G45SN1A504](#) [SF2159E](#) [FM-104-PIN](#) [CER0813B](#)

[MAPDCC0005](#) [3A325](#) [BD0810N50100AHF](#) [DC0710J5005AHF](#) [DC2327J5005AHF](#) [LFL15869MTC1B787](#) [X3C19F1-20S](#)

[CDBLB455KCAX39-B0](#) [RF1353C](#) [051157-0000](#) [PD0922J5050D2HF](#) [600S150FTRB](#) [1E1305-3](#) [1F1304-3S](#) [TP-103-PIN](#)

[BD1222J50200AHF](#) [BD1722J50100AHF](#) [2450DP39K5400E](#) [BD0810J50150AHF](#) [BD1722J50200AHF](#) [DS-327-PIN](#) [MACP-008125-](#)

[CK07F0](#) [DS-329-PIN](#) [DS-313-PIN](#) [TP-104-PIN](#) [TP-101-PIN](#) [HH-128-PIN](#) [8594810000](#) [T-1000-N](#) [JP506S](#) [XC0900P-10S](#) [XC0900B-30S](#)

[CHE1260-QAG](#) [11305-10](#) [5962-9091202MXA](#) [3A412S](#) [X3C06A4-03S](#) [B39000Z3410A4](#) [DSS-333-PIN](#) [PD2425J5050S2HF](#)

[B39242B4360P810](#) [B39781B8005P810](#)