

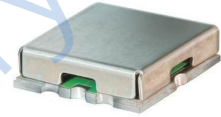
## Features

- low insertion loss, 0.3dB typ. @ passband
- high rejection
- shielded case
- aqueous washable

## Applications

- transmitters / receivers
- sub-harmonic rejection
- military communications

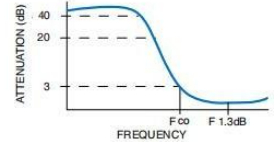
## HT-RHP-139+



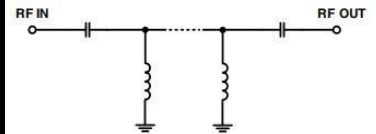
50Ω 225 to 3000 MHz

Electrical Specifications (T <sub>AMB</sub> = 25° C)					
STOP BAND (MHz)		FCO,(MHz) Nom.	PASS BAND (MHz)	VSWR (:1)	
(Loss>40dB) (Loss>20dB)		(Loss 3dB)	(Loss <1dB)	Stopband Typ.	Passband Typ.
DC-75	DC-100	139	225-3000	18	1.2

## Typical Frequency Response



## Functional Schematic



## Pin Connections

INPUT	2
OUTPUT	6
GROUND	1, 3, 4, 5, 7, 8

## Maximum Ratings

Operating Temperature -40°C to 85°C

Storage Temperature -55°C to 100°C

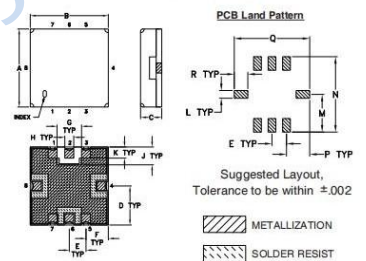
RF Power Input\* 0.5W max. at 25°C

Permanent damage may occur if any of these limits are exceeded.

## Typical Performance Data at 25° C

Frequency (MHz)	Insertion Loss (dB)	VSWR (:1)
1.0	84.43	1997.13
10	84.90	2799.39
50	84.46	383.36
75	51.95	124.78
100	30.12	51.87
112	20.63	28.59
125	10.63	10.82
133	5.39	4.48
139	2.86	2.33
145	1.64	1.42
170	0.80	1.17
225	0.49	1.24
500	0.24	1.01
1000	0.24	1.10
1500	0.31	1.19
2000	0.39	1.26
2500	0.42	1.26
3000	0.47	1.21

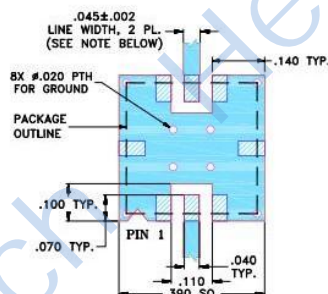
## Outline Drawing



## Outline Dimensions: Unit (mm)

A	8.89	B	8.89	C	2.54
D	4.45	E	1.93	F	2.54
G	2.79	H	1.02	J	2.03
K	1.27	L	1.02	M	4.95
N	9.91	P	3.05	Q	9.91
WT		R	1.78		

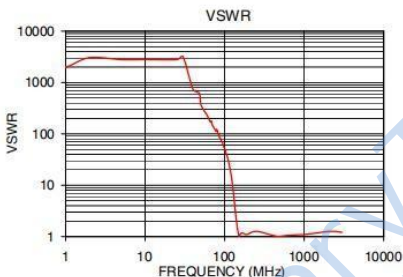
## Demo Board MCL P/N: TB-332 Suggested PCB Layout (PL-176)



### NOTES:

1. TRACE WIDTH IS SHOWN FOR FR4 WITH DIELECTRIC THICKNESS .025" ± .002"; COPPER: 1/2 OZ. EACH SIDE. FOR OTHER MATERIALS TRACE WIDTH MAY NEED TO BE MODIFIED.
2. BOTTOM SIDE OF THE PCB IS CONTINUOUS GROUND PLANE.

- DENOTES PCB COPPER LAYOUT WITH SMOBC (SOLDER MASK OVER BARE COPPER)
- DENOTES COPPER LAND PATTERN FREE OF SOLDER MASK



## X-ON Electronics

Largest Supplier of Electrical and Electronic Components

*Click to view similar products for [Signal Conditioning](#) category:*

*Click to view products by [HenryTech](#) manufacturer:*

Other Similar products are found below :

[PD0409J5050S2HF](#) [HHS-109-PIN](#) [AFS14A35-1591.50-T3](#) [JP510S](#) [LFB322G45SN1A504](#) [SF2159E](#) [FM-104-PIN](#) [CER0813B](#)  
[MAPDCC0005](#) [3A325](#) [BD0810N50100AHF](#) [DC0710J5005AHF](#) [DC2327J5005AHF](#) [LFL15869MTC1B787](#) [X3C19F1-20S](#)  
[CDBLB455KCAX39-B0](#) [RF1353C](#) [051157-0000](#) [PD0922J5050D2HF](#) [600S150FTRB](#) [1E1305-3](#) [1F1304-3S](#) [TP-103-PIN](#)  
[BD1222J50200AHF](#) [BD1722J50100AHF](#) [2450DP39K5400E](#) [BD0810J50150AHF](#) [BD1722J50200AHF](#) [DS-327-PIN](#) [MACP-008125-](#)  
[CK07F0](#) [DS-329-PIN](#) [DS-313-PIN](#) [TP-104-PIN](#) [TP-101-PIN](#) [HH-128-PIN](#) [8594810000](#) [T-1000-N](#) [JP506S](#) [XC0900P-10S](#) [XC0900B-30S](#)  
[CHE1260-QAG](#) [11305-10](#) [5962-9091202MXA](#) [3A412S](#) [X3C06A4-03S](#) [B39000Z3410A4](#) [DSS-333-PIN](#) [PD2425J5050S2HF](#)  
[B39242B4360P810](#) [B39781B8005P810](#)