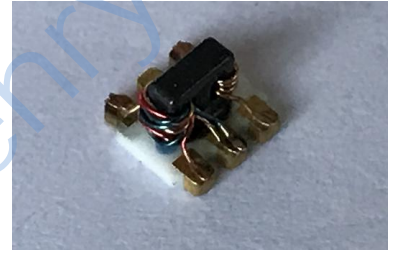


## HT-TCM2-63WX+



**50Ω 30 to 6000 MHz**

### Features

- Wideband, 30 to 6000 MHz
- Low insertion loss, 1.5 dB typ. up to 4 GHz
- Good amplitude unbalance,  $\pm 0.4$  dB typ.
- Good input return loss, 15 dB typ.
- Low phase unbalance,  $\pm 4^\circ$  typ.
- 50Ω 30 to 6000 MHz

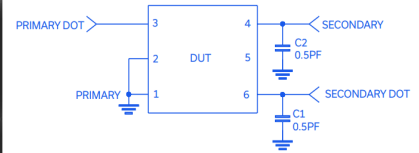
### Applications

- PCS
- wideband push-pull amplifiers
- cellular

### Transformer Electrical Specifications at 25°C

Impedance Ratio	Frequency Range (MHz)	INSERTION LOSS* (dB) 10~6000MHz	PHASE UNBALANCE (Deg.) Typ.	AMPLITUDE UNBALANCE (dB) Typ.
2	30 ~ 6000	0.9 ~ 4.1	5	0.5

### ELECTRICAL SCHEMATIC



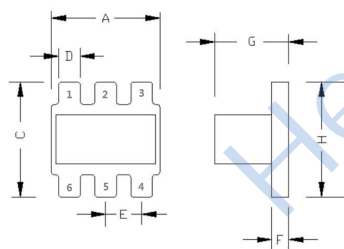
### Typical Performance Data

FREQUENCY (MHz)	INSERTION LOSS (dB)	INPUT R. LOSS (dB)	AMPLITUDE UNBALANCE (dB)	PHASE UNBALANCE (Deg.)
30	2.56	15.56	0.14	1.23
500	1.58	14.22	0.50	2.86
1000	1.21	15.10	0.57	2.89
1500	0.97	18.46	0.41	2.70
2000	0.87	23.81	0.16	2.68
2500	0.96	18.16	0.09	2.59
3000	1.13	13.61	0.30	2.04
4000	1.24	12.99	0.64	0.83
5000	1.22	22.65	0.85	4.94
6000	2.68	10.37	0.59	10.30

### Maximum Ratings

Operating Temperature	-40°C to 85°C
Storage Temperature	-55°C to 100°C
RF Power	0.4W
DC Current	30mA
Permanent damage may occur if any of these limits are exceeded.	

### Outline Drawing



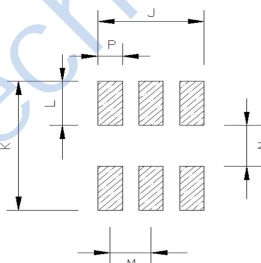
### Outline Dimensions ( mm)

A	3.81	N	1.53
B	-	M	1.27
C	3.81	P	0.76
D	0.76		
E	1.27		
F	0.61		
G	2.61		
H	3.81		
J	3.3		
K	4.83		
L	1.65		
WT			

### Pin Connections

PRIMARY DOT	3
PRIMARY	1,2
SECONDARY DOT	6
SECONDARY	4
GND	1,2
NOT USED	5

### PCB Land Pattern



## X-ON Electronics

Largest Supplier of Electrical and Electronic Components

*Click to view similar products for [Signal Conditioning](#) category:*

*Click to view products by [HenryTech](#) manufacturer:*

Other Similar products are found below :

[PD0409J5050S2HF](#) [HHS-109-PIN](#) [AFS14A35-1591.50-T3](#) [JP510S](#) [LFB322G45SN1A504](#) [SF2159E](#) [FM-104-PIN](#) [CER0813B](#)  
[MAPDCC0005](#) [3A325](#) [BD0810N50100AHF](#) [DC0710J5005AHF](#) [DC2327J5005AHF](#) [LFL15869MTC1B787](#) [X3C19F1-20S](#)  
[CDBLB455KCAX39-B0](#) [RF1353C](#) [051157-0000](#) [PD0922J5050D2HF](#) [600S150FTRB](#) [1E1305-3](#) [1F1304-3S](#) [TP-103-PIN](#)  
[BD1222J50200AHF](#) [BD1722J50100AHF](#) [2450DP39K5400E](#) [BD0810J50150AHF](#) [BD1722J50200AHF](#) [DS-327-PIN](#) [MACP-008125-](#)  
[CK07F0](#) [DS-329-PIN](#) [DS-313-PIN](#) [TP-104-PIN](#) [TP-101-PIN](#) [HH-128-PIN](#) [8594810000](#) [T-1000-N](#) [JP506S](#) [XC0900P-10S](#) [XC0900B-30S](#)  
[CHE1260-QAG](#) [11305-10](#) [5962-9091202MXA](#) [3A412S](#) [X3C06A4-03S](#) [B39000Z3410A4](#) [DSS-333-PIN](#) [PD2425J5050S2HF](#)  
[B39242B4360P810](#) [B39781B8005P810](#)