

“Stay Connected” with

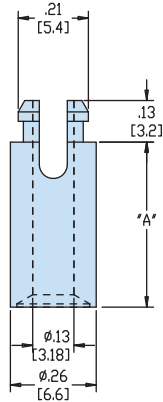


HEYware Products

a PennEngineering® Company

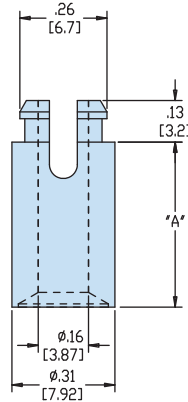
Heyco® Nylon PCB Supports - Stackable Self-Retaining Spacers

- May be stacked for multi-level PCB applications.
- Self aligning.
- One end locks into PCB.
- Clear hole variations for #4, #6 or #8 screw.



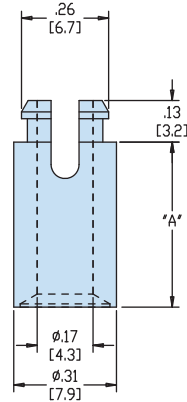
TWO PRONG SNAP LOCK / #4 SELF-TAPPING SCREW

HSSRS4



TWO PRONG SNAP LOCK / #6 SELF-TAPPING SCREW

HSSRS6



TWO PRONG SNAP LOCK / #8 SELF-TAPPING SCREW

HSSRS8



	Maximum Thickness		Mounting Hole Diameter		Maximum Thickness		Mounting Hole Diameter		Maximum Thickness		Mounting Hole Diameter	
	in.	mm.	in.	mm.	in.	mm.	in.	mm.	in.	mm.	in.	mm.
PCB	.062	1,6	.187	4,7	.062	1,6	.232	5,9	.062	1,6	.232	5,9
Chassis	self-tapping		#4		self-tapping		#6		self-tapping		#8 M4	

A		PART NO. FR Natural	DESCRIPTION	PART NO. FR Natural	DESCRIPTION	PART NO. Natural*	DESCRIPTION
in.	mm.						
.125	3,2	3681	HSSRS4-02				
.187	4,8	3683	HSSRS4-03				
.250	6,4	3684	HSSRS4-04	3689	HSSRS6-04	10857	HSSRS8-04
.312	7,9	10926	HSSRS4-05			10858	HSSRS8-05 NEW!
.375	9,5	3685	HSSRS4-06	3690	HSSRS6-06	10859	HSSRS8-06
.413	10,5	3686	HSSRS4-413				NEW!
.437	11,1	10928	HSSRS4-07			10860	HSSRS8-07 NEW!
.500	12,7	3687	HSSRS4-08	3691	HSSRS6-08	10861	HSSRS8-08
.625	15,9	3688	HSSRS4-10	3692	HSSRS6-10	10862	HSSRS8-10
.750	19,1	10931	HSSRS4-12			10863	HSSRS8-12 NEW!
.875	22,2	10932	HSSRS4-14			10864	HSSRS8-14 NEW!
1.000	25,4	10933	HSSRS4-16			10865	HSSRS8-16 NEW!

Standard material is FR natural.

*HSSRS8 standard material is UL 94V-2 natural.

Quick
Specs

Material: Nylon 6/6
 Flammability Rating: HSSRS4 & HSSRS6 - 94V-0; HSSRS8 - 94V-2
 Temperature Range: -40°F (-40°C) to 185°F (85°C)

X-ON Electronics

Largest Supplier of Electrical and Electronic Components

Click to view similar products for [Circuit Board Hardware - PCB category](#):

Click to view products by [Heyco manufacturer](#):

Other Similar products are found below :

[8919-0-00-15-00-00-03-0](#) [0135-0-15-01-30-27-04-0](#) [5970-1-15-01-32-14-04-0](#) [0149-0-15-15-30-27-04-0](#) [MBI 1 BLUE](#) [7305-0-15-15-47-14-10-0](#) [MLN 150/1 BLACK](#) [8579-0-15-80-11-27-10-0](#) [8579-1-15-15-11-27-10-0](#) [8830-0-15-01-22-14-10-0](#) [8836-0-00-21-00-00-03-0](#) [PRUEF 2 RED](#) [9976-0-00-00-00-00-03-0](#) [PW1616](#) [1215-3-05-00-00-00-01-0](#) [1231](#) [1303-0-15-15-47-14-04-0](#) [1404-3](#) [1404-4](#) [1406-4](#) [1407-3](#) [1406-3](#) [1407-4](#) [1408-3](#) [1424-4](#) [1427-3](#) [1419-4](#) [1426-4](#) [1548-103](#) [1938-0-00-00-00-00-03-0](#) [1942-0-00-00-00-00-03-0](#) [2101-3-00-44-00-00-07-0](#) [2108-2-00-50-00-00-07-0](#) [2109-2-00-44-00-00-07-0](#) [2110-2-00-44-00-00-07-0](#) [2111-2-00-00-00-00-07-0](#) [2113-4-00-44-00-00-07-0](#) [2301-3-00-44-00-00-07-0](#) [2308-1-00-50-00-00-07-0](#) [2313-2-00-00-00-00-07-0](#) [2315-2-01-44-00-00-07-0](#) [2333-1-00-50-00-00-07-0](#) [9000-0-00-00-00-00-03-0](#) [2506-2-00-50-00-00-07-0](#) [2507-2-01-44-00-00-07-0](#) [2508-2-00-44-00-00-07-0](#) [2561-2-00-44-00-00-07-0](#) [9220](#) [9234-0-15-15-30-14-10-0](#) [LAS S G BLACK](#)