

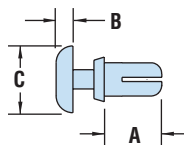


HEYClip™ Countersunk Type H Rivets

- Flat, **chamfered rivet head** for **easier disassembly** when required.
- Accommodate countersunk hole specification DIN ISO 7721.
- The "H" type rivet is designed with a flat head for fast and easy installation, without any tools.
- Simply place rivet into the hole and press down on the head to fasten.
- Part Description Key: PRH X-Y where X = Mounting Hole Diameter (inches) and Y = minimum Panel Thickness (inches).
- Standard Material: Nylon 6. Nylon 6/6 UL 94V-0 available by special order, consult Heyco.
- Standard Pack - 1,000/bag.

WILL FIT THESE PANELS						PART NO.			DESCRIPTION	PART DIMENSIONS						EXTRACTION FORCE	
MOUNTING HOLE DIA.		ASSEMBLED PANEL THICKNESS				Black	White	V-0 Black *		A Length		B Head Height		C Head Diameter		N	Style
in.	mm.	Min.	Max.	in.	mm.					in.	mm.	in.	mm.	in.	mm.		
PRH Series																	
.102	2,6	.22	5,5	.26	6,5	9118	9119	9118F	PRH 102-217	.33	8,5	.03	0,7	.18	4,6	49	1
.122	3,1	.04	1,0	.08	2,0	9156	9157	9156F	PRH 122-039	.14	3,5	.04	1,0	.25	6,4	78	1
		.08	2,0	.12	3,0	9158	9159	9158F	PRH 122-079	.18	4,5						
		.12	3,0	.16	4,0	9160	9161	9160F	PRH 122-118	.22	5,5						
		.16	4,0	.19	5,0	9162	9163	9162F	PRH 122-157	.26	6,5						
		.20	5,0	.24	6,0	9164	9165	9164F	PRH 122-197	.31	7,5						
		.22	5,5	.26	6,5	9166	9167	9166F	PRH 122-217	.32	8,0						
		.26	6,5	.30	7,5	9168	9169	9168F	PRH 122-256	.35	9,0						
.30	7,5	.34	8,5	9170	9171	9170F	PRH 122-295	.39	10,0								
.142	3,6	.04	1,0	.08	2,0	9172	9173	9172F	PRH 142-039	.14	3,5	.04	1,0	.25	6,4	118	2
		.08	2,0	.12	3,0	9174	9175	9174F	PRH 142-079	.19	4,5						
		.12	3,0	.16	4,0	9176	9177	9176F	PRH 142-118	.22	5,5						
		.14	3,5	.18	4,5	9178	9179	9178F	PRH 142-138	.24	6,0						
		.18	4,5	.22	5,5	9180	9181	9180F	PRH 142-177	.28	7,0						
		.22	5,5	.26	6,5	9182	9183	-	PRH 142-217	.32	8,0						

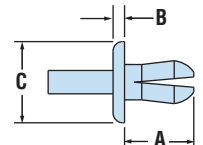
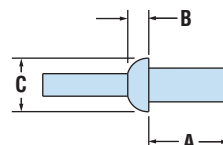
Standard colors black and white.
*Black nylon 6/6 UL 94V-0.



STYLE 1

STYLE 2

PRH Series



DR Series



- Install by placing rivet into hole and pushing the drive pin into the rivet to expand legs and lock in place.
- No tools required.
- Part Description Key: DR X-Y where X = Mounting Hole Diameter (inches) and Y = minimum Panel Thickness (inches).
- Standard Pack - 1,000/bag.

HEYClip™ Push (aka Drive) Rivets

WILL FIT THESE PANELS						PART NO.		DESCRIPTION	PART DIMENSIONS					
MOUNTING HOLE DIA.		ASSEMBLED PANEL THICKNESS				Black	Natural		A Length		B Head Height		C Head Diameter	
in.	mm.	Min.	Max.	in.	mm.				in.	mm.	in.	mm.	in.	mm.
DR Series														
.161	4,1	.10	2,5	.14	3,5	9141	9142*	DR 161-098	.20	5,0	.09	2,2	.31	8,0
.187	4,8	.04	1,0	.38	9,5	9184	9185	DR 189-039	.42	10,7	.06	1,5	.28	7,1
		.16	4,0	.28	7,1	9186	9187	DR 189-158	.38	9,7	.06	1,5	.43	10,9
.218	5,5	.09	2,4	.16	4,0	9188	9189	DR 217-094	.45	11,4	.08	2,0	.37	9,4
.250	6,4	.06	1,5	.25	6,4	9190	9191	DR 252-059	.37	9,3	.19	4,7	.44	11,1
		.28	7,1	.50	12,7	9192	9193	DR 252-280	.62	15,8	.08	2,0	.47	11,9

Standard colors black and natural.
*Standard color white.

Quick Specs

Material	PRH Series - Nylon 6	DR Series - Nylon 6/6
Flammability Rating	94V-2	
Temperature Range	-4°F (-18°C) to 185°F (85°C)	

X-ON Electronics

Largest Supplier of Electrical and Electronic Components

Click to view similar products for [Screws & Fasteners](#) category:

Click to view products by [Heyco](#) manufacturer:

Other Similar products are found below :

[5721-1440-1/4-SS](#) [593503FX](#) [0098.0094](#) [0098.9206](#) [0098.9219](#) [0098.9262](#) [596-2114-013](#) [59781-6](#) [0098.0026](#) [0098.9210](#) [0098.9212](#) [60227-01](#) [60227-04](#) [60227-08](#) [60687-01](#) [LOCK WASHER Black](#) [62153-03](#) [62153-11](#) [M316-KSSTMCZ100](#) [M3440-SS](#) [M3442-SS](#) [M3448-SS](#) [6292-1](#) [6-306105-9](#) [6-306131-4](#) [690432-1](#) [699161-000](#) [7230-3](#) [7244](#) [7248-1](#) [7248-2](#) [745564-1](#) [F1209](#) [751-00001](#) [7680](#) [809704-1](#) [8700](#) [8860220](#) [9047](#) [9521](#) [992326-6](#) [992763-3](#) [1-18024-0](#) [1-18028-2](#) [A168P1](#) [A495P1](#) [1-24921-1](#) [125416-1](#) [1260](#) [13-0036](#) [1301810148](#)