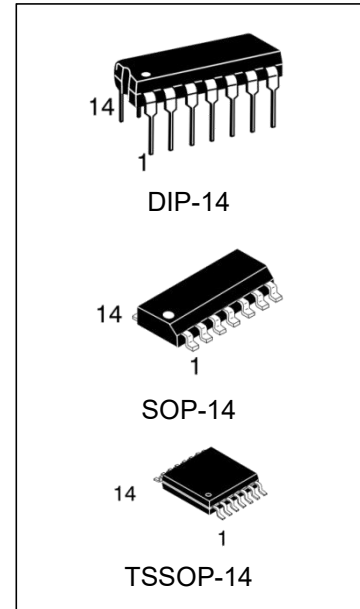


## CD4066 Quad Bilateral Switches

### Features:

- Wide supply voltage range from 3V to 9V
- Fully static operation
- 5V and 9V parametric ratings
- Standardized symmetrical output characteristics
- Inputs and outputs are protected against electrostatic effects
- Specified from -40°C to +85°C
- Packaging information: DIP14/SOP14/TSSOP14



### Ordering Information

DEVICE	Package Type	MARKING	Packing	Packing Qty
CD4066BE/ CD4066BN	DIP-14	CD4066B	TUBE	1000pcs/box
CD4066BM/TR	SOP-14	CD4066B	REEL	2500pcs/reel
CD4066BMT/TR	TSSOP-14	CD4066B	REEL	2500pcs/reel

## General Description

The CD4066B provides four single-pole, single-throw analog switch functions. Each switch has two input/output terminals (nY and nZ) and an active HIGH enable input (nE). When nE is LOW, the analog switch is turned off.

## Block Diagram

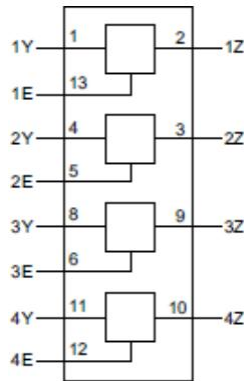


Figure 1. Functional diagram

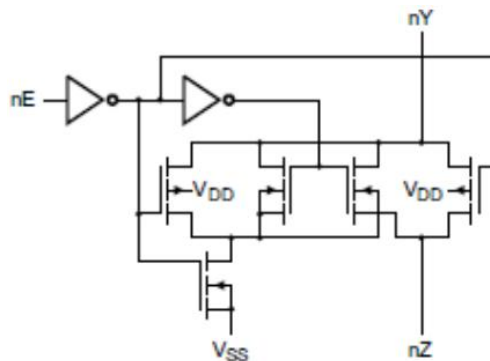


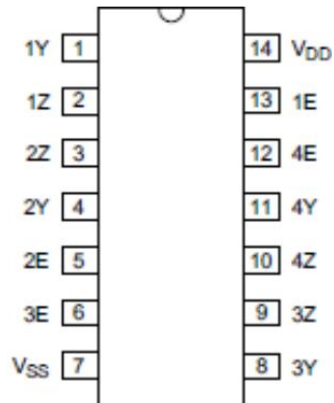
Figure 2. Logic diagram (one switch)

## Function Table

Input	Switch
nE	
H	ON
L	OFF

**Note:** H=HIGH voltage level; L=LOW voltage level.

## Pin Configurations



DIP-14/SOP-14/TSSOP-14

## Pin Description

Pin No.	Pin Name	Description
1	1Y	independent input or output
2	1Z	independent input or output
3	2Z	independent input or output
4	2Y	independent input or output
5	2E	enable input (active HIGH)
6	3E	enable input (active HIGH)
7	V <sub>SS</sub>	ground (0V)
8	3Y	independent input or output
9	3Z	independent input or output
10	4Z	independent input or output
11	4Y	independent input or output
12	4E	enable input (active HIGH)
13	1E	enable input (active HIGH)
14	V <sub>DD</sub>	supply voltage

## Absolute Maximum Ratings

(Voltages are referenced to  $V_{SS}$  (ground=0V), unless otherwise specified.)

Parameter	Symbol	Conditions	Min.	Max.	Unit
supply voltage	$V_{DD}$	-	-0.5	+12	V
input voltage	$V_I$	-	-0.5	$V_{DD}+0.5$	V
input clamping current	$I_{IK}$	$V_I < 0.5V$ or $V_I > V_{DD} + 0.5V$	-	$\pm 10$	mA
input/output current	$I_{I/O}$	-	-	$\pm 10$	mA
storage temperature	$T_{stg}$	-	-65	+150	°C
total power dissipation	$P_{tot}$	-	-	500	mW
device dissipation	P	per output transistor	-	100	mW
Soldering temperature	$T_L$	10s	DIP	245	°C
			SOP		°C

- Note:**
- 1、 Absolute Maximum Ratings indicate limits beyond which damage to the device may occur. Operating Ratings indicate conditions for which the device is intended to be functional, but specific performance is not ensured.
  - 2、 For DIP14 packages: above 70°C the value of  $P_{tot}$  derates linearly with 12mW/K.
  - 3、 For SOP14 packages: above 70°C the value of  $P_{tot}$  derates linearly with 8mW/K.
  - 4、 For (T)SSOP14 packages: above 60°C the value of  $P_{tot}$  derates linearly with 5.5mW/K.

## Recommended Operating Conditions

( $T_{amb}=25^\circ\text{C}$ ;  $R_L=10\text{k}\Omega$ ;  $C_L=50\text{pF}$ ;  $nE=V_{DD}$ ;  $V_{is}=V_{DD}=5V$ .)

Parameter	Symbol	Conditions	Min.	Typ.	Max.	Unit
supply voltage	$V_{DD}$	-	3	5	9	V
ambient temperature	$T_{amb}$	in free air	-40	-	+85	°C
input voltage	$V_I$	-	0	-	$V_{DD}$	V
Disable output time (High level→turn off)	$t_{PHZ}$	nE to nZ or nE to nY	-	80	160	ns
Disable output time (Low level→turn off)	$t_{PLZ}$	nE to nZ or nE to nY	-	80	160	ns
Enable output time (turn off→high/low level)	$t_{PZH}, t_{PZL}$	-	-	45	90	ns
input capacitance	$C_I$	-	-	-	7.5	pF

## Electrical Characteristics

### DC Characteristics 1

( $T_{amb}=25^{\circ}\text{C}$ , voltages are referenced to  $V_{SS}$  (ground=0V), unless otherwise specified.)

Parameter	Symbol	Conditions (V)		$T_{amb}=25^{\circ}\text{C}$			Unit
				Min.	Typ.	Max.	
supply current	$I_{DD}$	$V_I=V_{DD}$ or $V_{SS}$ , $I_O=0\text{A}$	$V_{DD}=5\text{V}$	-	-	1.0	$\mu\text{A}$
			$V_{DD}=9\text{V}$	-	-	2.0	$\mu\text{A}$
HIGH-level input voltage	$V_{IH}$	$ I_O <1\mu\text{A}$	$V_{DD}=5\text{V}$ , $V_O=0.5\text{V}$ or $4.5\text{V}$	3.5	-	-	V
			$V_{DD}=9\text{V}$ , $V_O=0.5\text{V}$ or $8\text{V}$	7.0	-	-	V
LOW-level input voltage	$V_{IL}$	$ I_O <1\mu\text{A}$	$V_{DD}=5\text{V}$ , $V_O=0.5\text{V}$ or $4.5\text{V}$	-	-	1.5	V
			$V_{DD}=9\text{V}$ , $V_O=0.5\text{V}$ or $8\text{V}$	-	-	3.0	V
input leakage current	$I_i$	$V_I=0\text{V}$ or $9\text{V}$ , $V_{DD}=9\text{V}$		-	-	0.3	$\mu\text{A}$
ON resistance (rail)	$R_{ON}$	$V_I=0\text{V}$ to $V_{DD}-V_{EE}$	$V_{DD}-V_{EE}=5\text{V}$	-	350	2500	$\Omega$
			$V_{DD}-V_{EE}=9\text{V}$	-	80	245	$\Omega$
		$V_I=0\text{V}$	$V_{DD}-V_{EE}=5\text{V}$	-	115	340	$\Omega$
			$V_{DD}-V_{EE}=9\text{V}$	-	50	160	$\Omega$
		$V_I=V_{DD}-V_{EE}$	$V_{DD}-V_{EE}=5\text{V}$	-	120	365	$\Omega$
			$V_{DD}-V_{EE}=9\text{V}$	-	65	200	$\Omega$
ON resistance mismatch between channels	$\Delta R_{ON}$	$V_I=0\text{V}$ to $V_{DD}-V_{EE}$	$V_{DD}-V_{EE}=5\text{V}$	-	25	-	$\Omega$
			$V_{DD}-V_{EE}=9\text{V}$	-	10	-	$\Omega$

**Note:** On resistance waveform and test circuit see Figure 9 and Figure 10.

## DC Characteristics 2

( $T_{amb}=-40^{\circ}\text{C}$  to  $+85^{\circ}\text{C}$ , voltages are referenced to  $V_{SS}$  (ground=0V), unless otherwise specified.)

Parameter	Symbol	Conditions (V)	$T_{amb}=-40^{\circ}\text{C}$		$T_{amb}=+85^{\circ}\text{C}$		Unit	
			Min.	Max.	Min.	Max.		
supply current	$I_{DD}$	$V_i=V_{DD}$ or $V_{SS}$ , $I_o=0A$	$V_{DD}=5V$	-	1.0	-	7.5	$\mu A$
			$V_{DD}=9V$	-	2.0	-	15.0	$\mu A$
HIGH-level input voltage	$V_{IH}$	$ I_o <1\mu A$	$V_{DD}=5V$ , $V_o=0.5V$ or $4.5V$	3.5	-	3.5	-	V
			$V_{DD}=9V$ , $V_o=0.5V$ or $8V$	7.0	-	7.0	-	V
LOW-level input voltage	$V_{IL}$	$ I_o <1\mu A$	$V_{DD}=5V$ , $V_o=0.5V$ or $4.5V$	-	1.5	-	1.5	V
			$V_{DD}=9V$ , $V_o=0.5V$ or $8V$	-	3.0	-	3.0	V
input leakage current	$I_i$	$V_i=0V$ or $9V$ , $V_{DD}=9V$	-	-	-	1.0	$\mu A$	

## AC Characteristics 1

( $T_{amb}=25^{\circ}\text{C}$ ,  $V_{EE}=V_{SS}=0V$ ,  $t_r, t_f \leq 20ns$ ,  $C_L=50pF$ ,  $R_L=10k\Omega$ , unless otherwise specified.)

Parameter	Symbol	Conditions	Min.	Typ.	Max.	Unit	
HIGH to LOW propagation delay time	$t_{PHL}$	nY to nZ; nZ to nY; see Figure 4	$V_{DD}=5V$	-	10	20	ns
			$V_{DD}=9V$	-	5	10	ns
LOW to HIGH propagation delay	$t_{PLH}$	nY to nZ; nZ to nY; see Figure 4	$V_{DD}=5V$	-	10	20	ns
			$V_{DD}=9V$	-	5	10	ns
HIGH to OFF-state propagation delay	$t_{PHZ}$	nE to nY, nZ; see Figure 5	$V_{DD}=5V$	-	80	160	ns
			$V_{DD}=9V$	-	65	130	ns
LOW to OFF-state propagation delay	$t_{PLZ}$	nE to nY, nZ; see Figure 5	$V_{DD}=5V$	-	80	160	ns
			$V_{DD}=9V$	-	70	140	ns
OFF-state to HIGH propagation delay	$t_{PZH}$	nE to nY, nZ; see Figure 5	$V_{DD}=5V$	-	40	80	ns
			$V_{DD}=9V$	-	20	40	ns
OFF-state to LOW propagation delay	$t_{PZL}$	nE to nY, nZ; see Figure 5	$V_{DD}=5V$	-	45	90	ns
			$V_{DD}=9V$	-	20	40	ns

## AC Characteristics 2

( $T_{amb}=25^{\circ}C$ ,  $V_{EE}=V_{SS}=0V$ ,  $V_i=0.5V_{DD}$  (p-p), unless otherwise specified.)

Parameter	Symbol	Conditions	Min.	Typ.	Max.	Unit	
Square wave distortion	$d_{sin}$	see Figure 6; $R_L=10k\Omega$ ; $C_L=15pF$ ; channel ON; $f_i=1kHz$	$V_{DD}=5V$	0.25	-	-	%
			$V_{DD}=9V$	0.04	-	-	%
any two channel crosstalk	$f_{ct}$	$V_{DD}=9V$ , see note2	1	-	-	MHz	
crosstalk voltage (nE to nY to nZ)	$V_{ct}$	see Figure 7; $R_L=10k\Omega$ ; $C_L=15pF$ ; $\bar{E}$ or Sn= $V_{DD}$ (square-wave)	50	-	-	mV	
OFF frequency	$f_{OFF}$	$V_{DD}=9V$ , see note3	1	-	-	MHz	
conduction frequency	$f_{ON}$	$V_{DD}=5V$ , see note4	-	-	-	MHz	
		$V_{DD}=9V$ , see note4	90	-	-	MHz	

**Note:**

- (1)  $f_i$  is biased at  $0.5V_{DD}$ ;  $V_i=0.5V_{DD}$  (p-p).
- (2)  $R_L=1k\Omega$ ;  $20\log V_{os}/V_{is}=-50dB$ , see Figure 8.
- (3)  $R_L=1k\Omega$ ;  $C_L=5pF$ , channel off,  $20\log V_{os}/V_{is}=-50dB$ , see Figure 6.
- (4)  $R_L=1k\Omega$ ;  $C_L=5pF$ , channel on,  $20\log V_{os}/V_{is}=-3dB$ , see Figure 6.

## Testing Circuit

### AC Testing Circuit 1

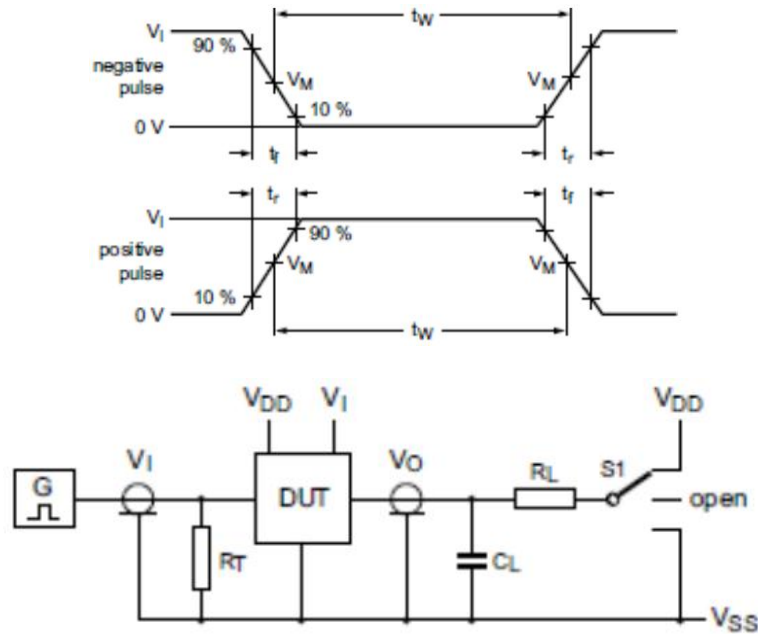


Figure 3. Test circuit for switching times

Definitions for test circuit:

DUT=Device Under Test.

$C_L$ =Load capacitance including jig and probe capacitance.

$R_T$ =Termination resistance should be equal to the output impedance  $Z_o$  of the pulse generator.

$R_L$ =Load resistance.

### AC Testing Waveforms

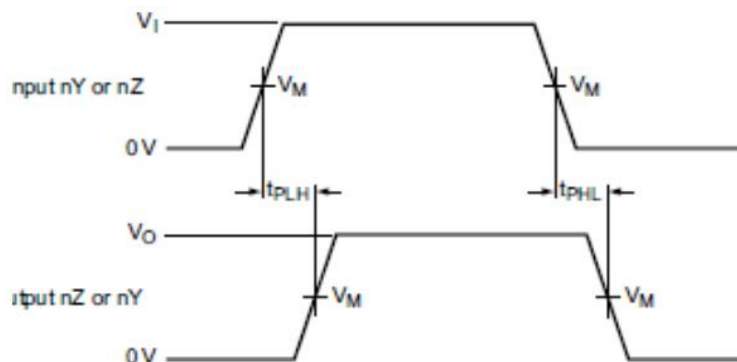


Figure 4. nY or nZ to nZ or nY propagation delays



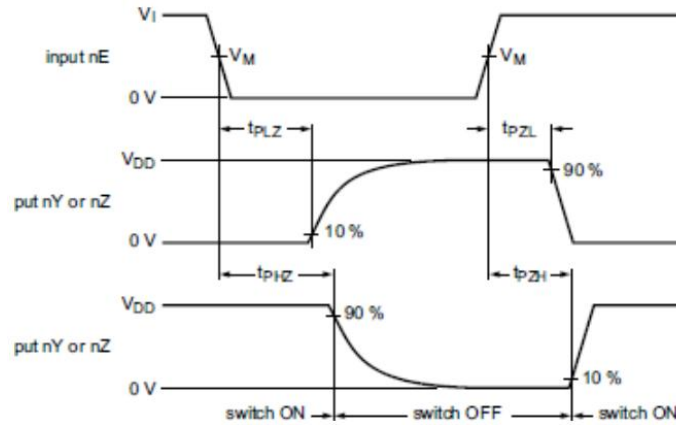


Figure 5. Enable and disable times

## AC Testing Circuit 2

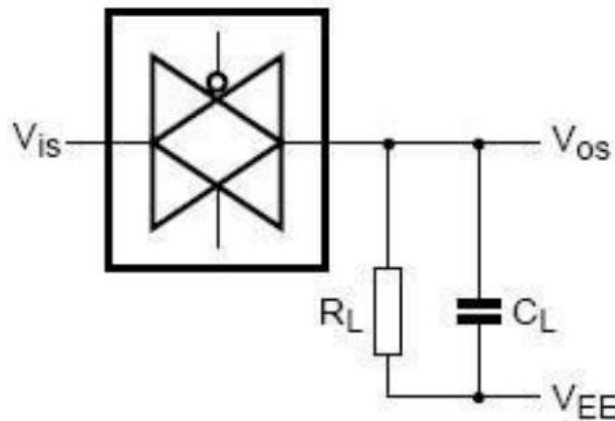


Figure 6. Square wave distortion degree of cut-off frequency and conduction frequency test pattern

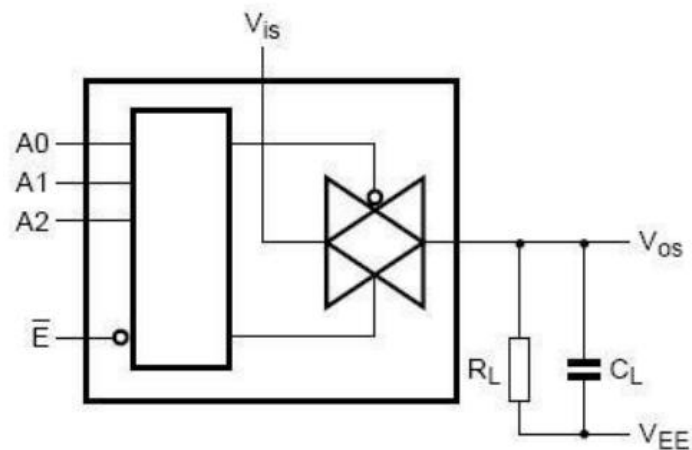


Figure 7. Crosstalk logical input/output test

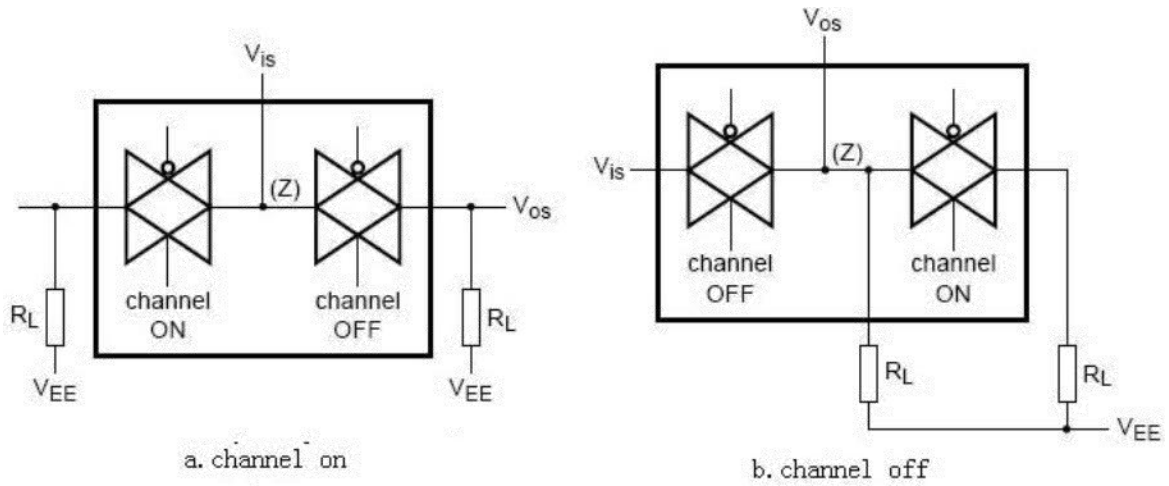
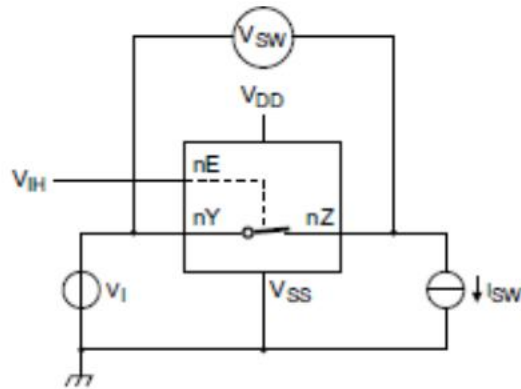


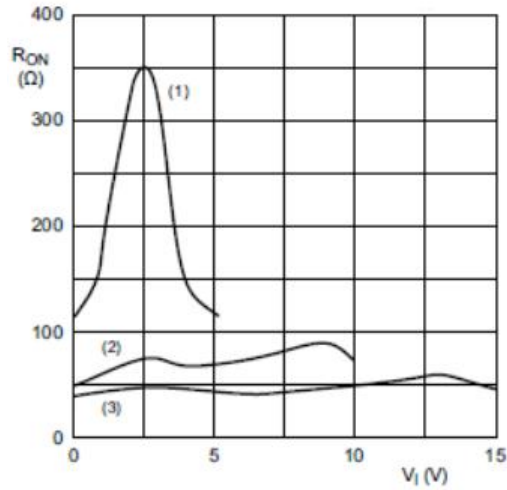
Figure 8. Inter channel Crosstalk

### On Resistance Waveform And Test Circuit



$$R_{ON} = V_{SW} / I_{SW}$$

Figure 9. Test circuit for measuring  $R_{ON}$


 $I_{SW} = 200 \mu A.$ 

- (1)  $V_{DD} = 5 V$
- (2)  $V_{DD} = 10 V$
- (3)  $V_{DD} = 15 V$

 Figure 10. Typical  $R_{ON}$  as a function of input voltage

## Measurement Points

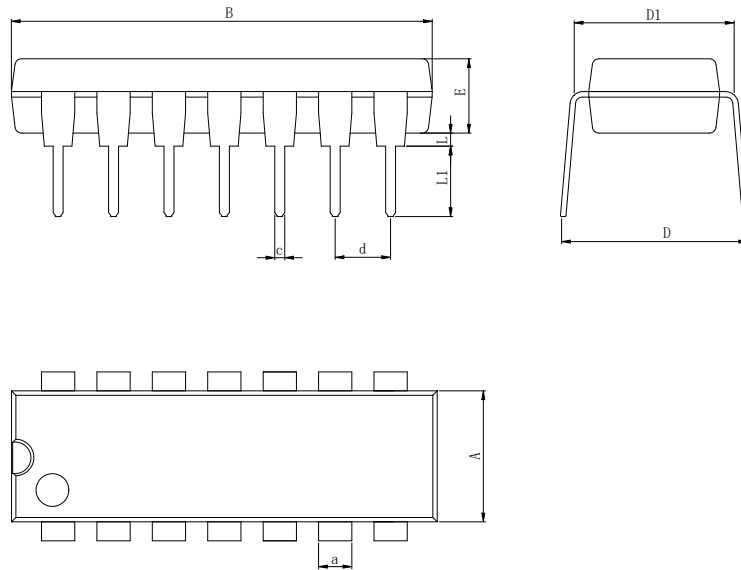
Supply voltage	Input	Output
$V_{DD}$	$V_M$	$V_M$
3V to 9V	$0.5 \times V_{DD}$	$0.5 \times V_{DD}$

## Test Data

Test	Input		Load		Switch
	$V_{is}$	$t_r, t_f$	$C_L$	$R_L$	
$t_{PHL}$	$V_{EE}$	20ns	50pF	10k $\Omega$	$V_{DD}$
$t_{PLH}$	$V_{DD}$	20ns	50pF	10k $\Omega$	$V_{EE}$
$t_{PZH}, t_{PHZ}$	$V_{DD}$	20ns	50pF	10k $\Omega$	$V_{EE}$
$t_{PZL}, t_{PLZ}$	$V_{EE}$	20ns	50pF	10k $\Omega$	$V_{DD}$
others	pulse	20ns	50pF	10k $\Omega$	open

## Physical Dimensions

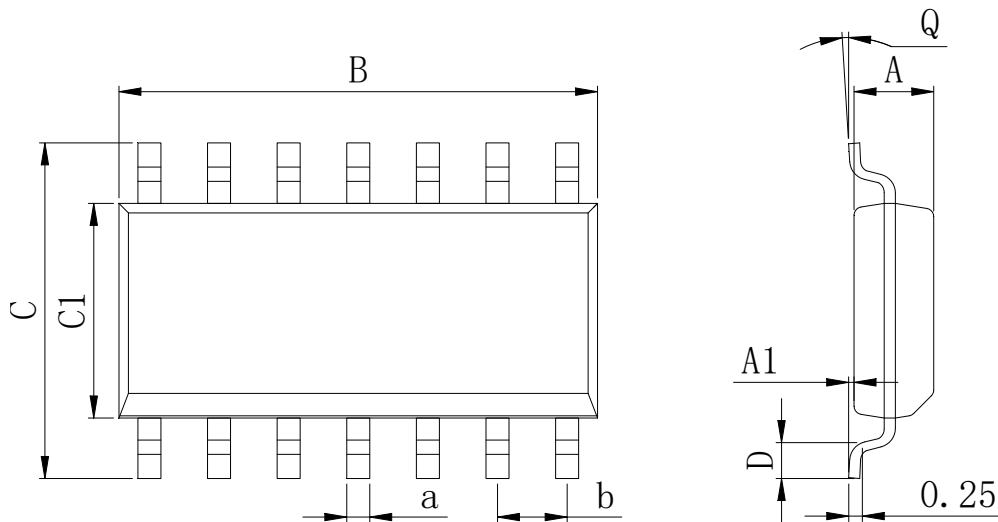
### DIP-14



**Dimensions In Millimeters(DIP-14)**

Symbol:	A	B	D	D1	E	L	L1	a	c	d
Min:	6.10	18.94	8.10	7.42	3.10	0.50	3.00	1.50	0.40	2.54 BSC
Max:	6.68	19.56	10.9	7.82	3.55	0.70	3.60	1.55	0.50	

### SOP-14

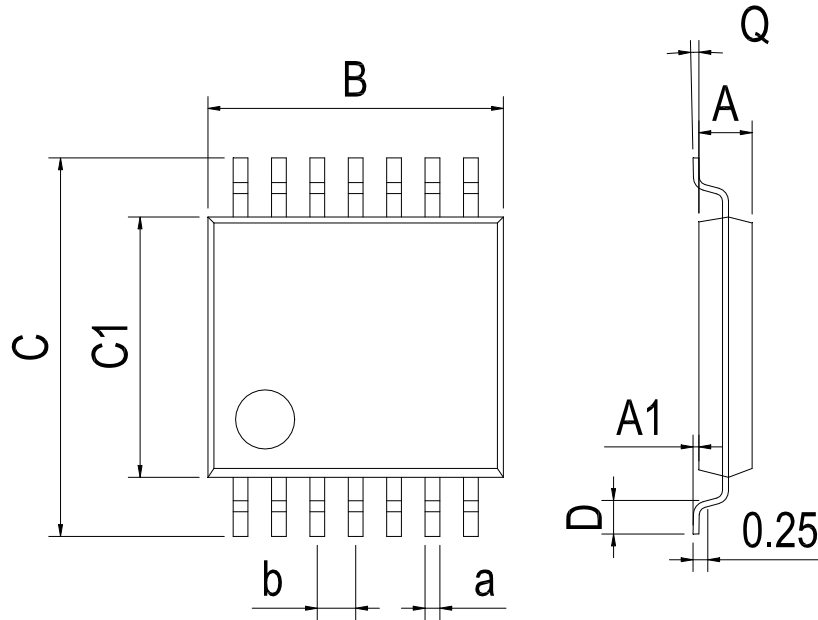


**Dimensions In Millimeters(SOP-14)**

Symbol:	A	A1	B	C	C1	D	Q	a	b
Min:	1.35	0.05	8.55	5.80	3.80	0.40	0°	0.35	1.27 BSC
Max:	1.55	0.20	8.75	6.20	4.00	0.80	8°	0.45	

**Physical Dimensions**

TSSOP-14



Dimensions In Millimeters(TSSOP-14)									
Symbol:	A	A1	B	C	C1	D	Q	a	b
Min:	0.85	0.05	4.90	6.20	4.30	0.40	0°	0.20	0.65 BSC
Max:	0.95	0.20	5.10	6.60	4.50	0.80	8°	0.25	

## Revision History

DATE	REVISION	PAGE
2015-5-28	New	1-15
2023-11-14	Document Reformatting、 Update DIP Package New Model	1-15、 1

---

**IMPORTANT STATEMENT:**

Huaguan Semiconductor reserves the right to change its products and services without notice. Before ordering, the customer shall obtain the latest relevant information and verify whether the information is up to date and complete. Huaguan Semiconductor does not assume any responsibility or obligation for the altered documents.

Customers are responsible for complying with safety standards and taking safety measures when using Huaguan Semiconductor products for system design and machine manufacturing. You will bear all the following responsibilities: Select the appropriate Huaguan Semiconductor products for your application; Design, validate and test your application; Ensure that your application meets the appropriate standards and any other safety, security or other requirements. To avoid the occurrence of potential risks that may lead to personal injury or property loss.

Huaguan Semiconductor products have not been approved for applications in life support, military, aerospace and other fields, and Huaguan Semiconductor will not bear the consequences caused by the application of products in these fields. All problems, responsibilities and losses arising from the user's use beyond the applicable area of the product shall be borne by the user and have nothing to do with Huaguan Semiconductor, and the user shall not claim any compensation liability against Huaguan Semiconductor by the terms of this Agreement.

The technical and reliability data (including data sheets), design resources (including reference designs), application or other design suggestions, network tools, safety information and other resources provided for the performance of semiconductor products produced by Huaguan Semiconductor are not guaranteed to be free from defects and no warranty, express or implied, is made. The use of testing and other quality control technologies is limited to the quality assurance scope of Huaguan Semiconductor. Not all parameters of each device need to be tested.

The documentation of Huaguan Semiconductor authorizes you to use these resources only for developing the application of the product described in this document. You have no right to use any other Huaguan Semiconductor intellectual property rights or any third party intellectual property rights. It is strictly forbidden to make other copies or displays of these resources. You should fully compensate Huaguan Semiconductor and its agents for any claims, damages, costs, losses and debts caused by the use of these resources. Huaguan Semiconductor accepts no liability for any loss or damage caused by infringement.

## X-ON Electronics

Largest Supplier of Electrical and Electronic Components

*Click to view similar products for [Analogue Switch ICs](#) category:*

*Click to view products by [HGSEMI](#) manufacturer:*

Other Similar products are found below :

[FSA3051TMX](#) [NLAS5223BLMNR2G](#) [NLX2G66DMUTCG](#) [TC74HC4066AFTEL](#) [425541DB](#) [DG403DY](#) [099044FB](#) [MAX4762ETB+](#)  
[NLAS3799BMNR2G](#) [NLAS5123MNR2G](#) [ISL84684IR](#) [PI5A4157CEX](#) [PI5A4599BCEX](#) [NLAS4717EPFCT1G](#) [PI5A3167CCEX](#)  
[SLAS3158MNR2G](#) [PI5A392AQE](#) [ADG714BCPZ-REEL7](#) [DG333ALDW-T1-E3](#) [ISL43113IB](#) [ISL43140IB](#) [ISL43140IBZ-T](#) [ISL43143IR](#)  
[ISL43L120IR](#) [ISL43L121IR](#) [ISL43L122IR](#) [ISL43L220IR](#) [ISL43L410IR](#) [ISL43L420IR](#) [ISL43L710IR](#) [ISL43L711IR](#) [ISL43L712IR](#)  
[ISL84053IA](#) [ISL84514IB](#) [ISL84516IB](#) [ISL84684IUZ-T](#) [LNLASB3157DFT2G](#) [NLAS324US](#) [NLASTV4599DFT2G](#) [TPW4053-SR](#)  
[WAS4642Q-24/TR](#) [ADG842YKSZ-REEL7](#) [WAS4766C-9/TR](#) [WAS7227Q-10/TR](#) [WAS4646C-36/TR](#) [WAS4735Q-16/TR](#) [BL1532TQFN](#)  
[RS2233YS16](#) [CH483M](#) [TMUX1248DCKR](#)