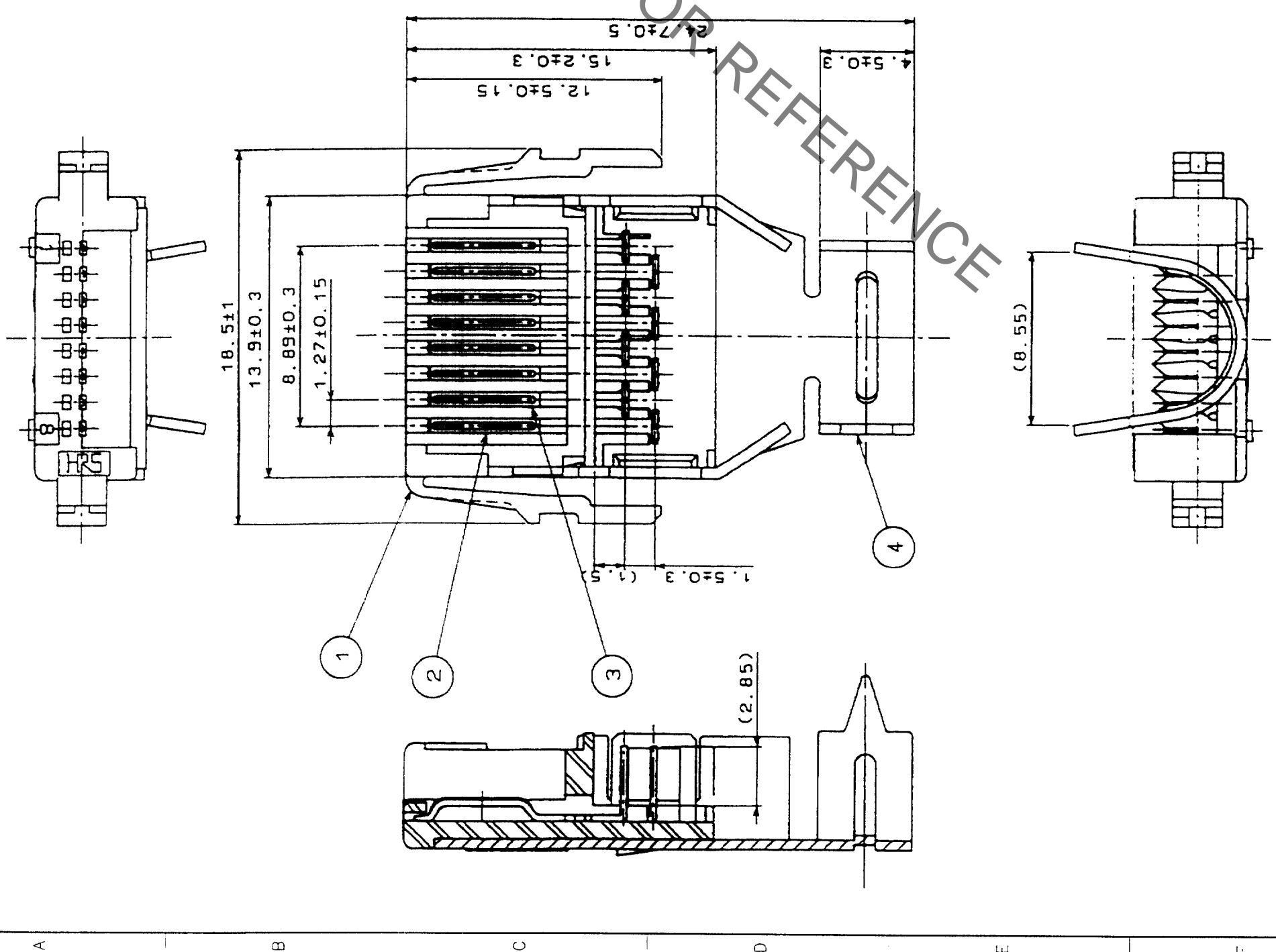
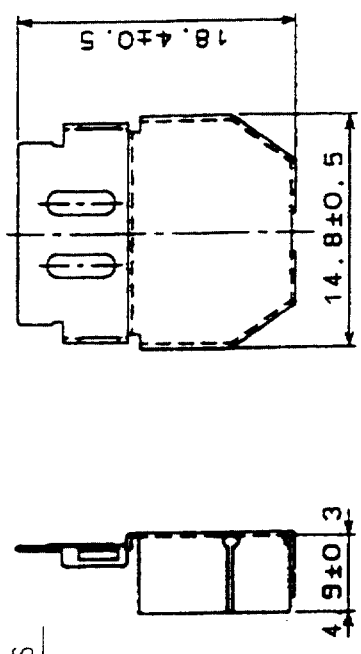


Sep.1.2021 Copyright 2021 HIROSE ELECTRIC CO., LTD. All Rights Reserved.
 In case of consideration for using Automotive equipment / device which demand high reliability, kindly contact our sales window correspondents.

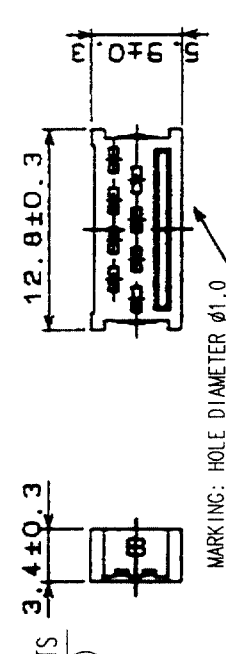
NO.	DESCRIPTION OF REVISIONS	BY	CHKD	DATE	COUNT	DESCRIPTION OF REVISIONS	BY	CHKD	DATE
1									
2									
3									
4									
5									
6									
7									
8									



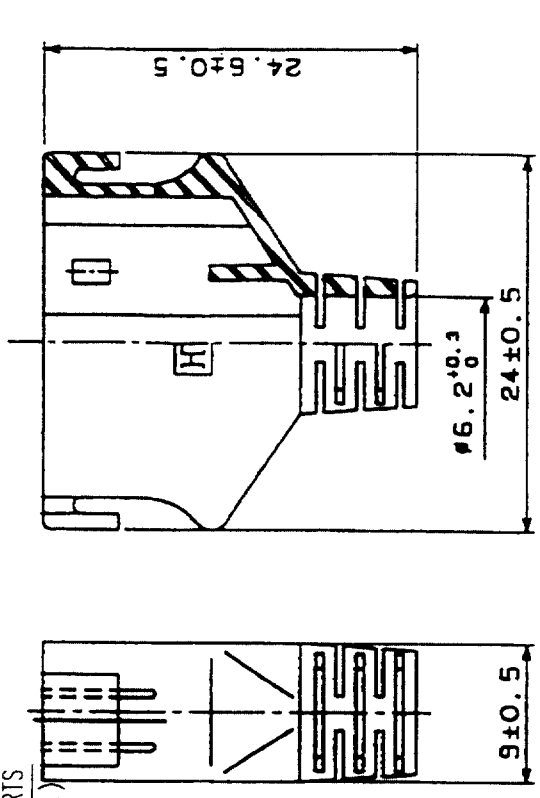
5 ATTACHED PARTS
(SCALE 2/1)



6 ATTACHED PARTS
(SCALE 2/1)



7 ATTACHED PARTS
(SCALE 2/1)



NO.	MATERIAL	FINISH, REMARKS	NO.	MATERIAL	FINISH, REMARKS
4	BRASS	TIN PLATING			
3	BERYLLIUM COPPER	SELECTIVE GOLD PLATING 0.2μm	7	POLYCARBONATE	(BLACK)
2	BERYLLIUM COPPER	SELECTIVE GOLD PLATING 0.2μm	6	POLYCARBONATE	UL94V-0(CLEAR)
1	POLYCARBONATE	UL94V-0(WHITE)	5	BRASS	TIN PLATING

CODE NO. (OLD)	CL	DESIGNED	03.12.10	CHECKED	Waterabe	APPROVED	03.12.12	RELEASED	
SCALE	4 : 1	DRAWN	03.12.10	DESIGNED	Waterabe	APPROVED	03.12.12	RELEASED	
UNITS	mm								

DRAWING NO.	EDC3-045470-01	PART NO.	3130-8P-C(50)
CODE NO.		CODE NO.	CL231-3002-7-50

TO	
Q	

X-ON Electronics

Largest Supplier of Electrical and Electronic Components

Click to view similar products for [I/O Connectors](#) category:

Click to view products by [Hirose](#) manufacturer:

Other Similar products are found below :

[571763P](#) [58098-0628](#) [72.250.1628.2](#) [72.250.2428.2](#) [74720-0505](#) [76.350.0729.0](#) [76871-1403](#) [FCN-244F080-G/1](#) [FCN-260A9920](#) [MP-5T180MUNNA-005](#) [PCR-E36PM](#) [PCS-XE26MA+](#) [G38A71314B](#) [1571250010](#) [157-22500-3](#) [MS3471L14-19P L/C](#) [192991-0703](#) [172501-4002](#) [172501-6002](#) [FCN-260C008-A/L0](#) [FCN-260C024-AL0](#) [FCN-261Z008](#) [2000314-1](#) [200331-1](#) [PCR-E36FC+](#) [PCS-E28FS+](#) [PCS-XE26SLFD+](#) [PCS-XE26SLFDT+](#) [G730VID08BDC24](#) [HDR-E14MSG1+](#) [U90B2054081210](#) [UE86K842720321](#) [38113800006](#)
[DP3AR020WQ1R200](#) [Z4.102.0680.0](#) [500-1040](#) [500-1052](#) [500-1054](#) [ZP-4008-66L](#) [0709821002](#) [DX40-20P\(55\)](#) [5554841-1](#) [MS3474W18-8P-LC*](#) [SM3106F14S-7S-LC](#) [U90B3054061110](#) [U65-E04-4020](#) [ZPF000000000097891](#) [557-262M2-06C](#) [747360449](#) [10099439-003C-TRLF](#)