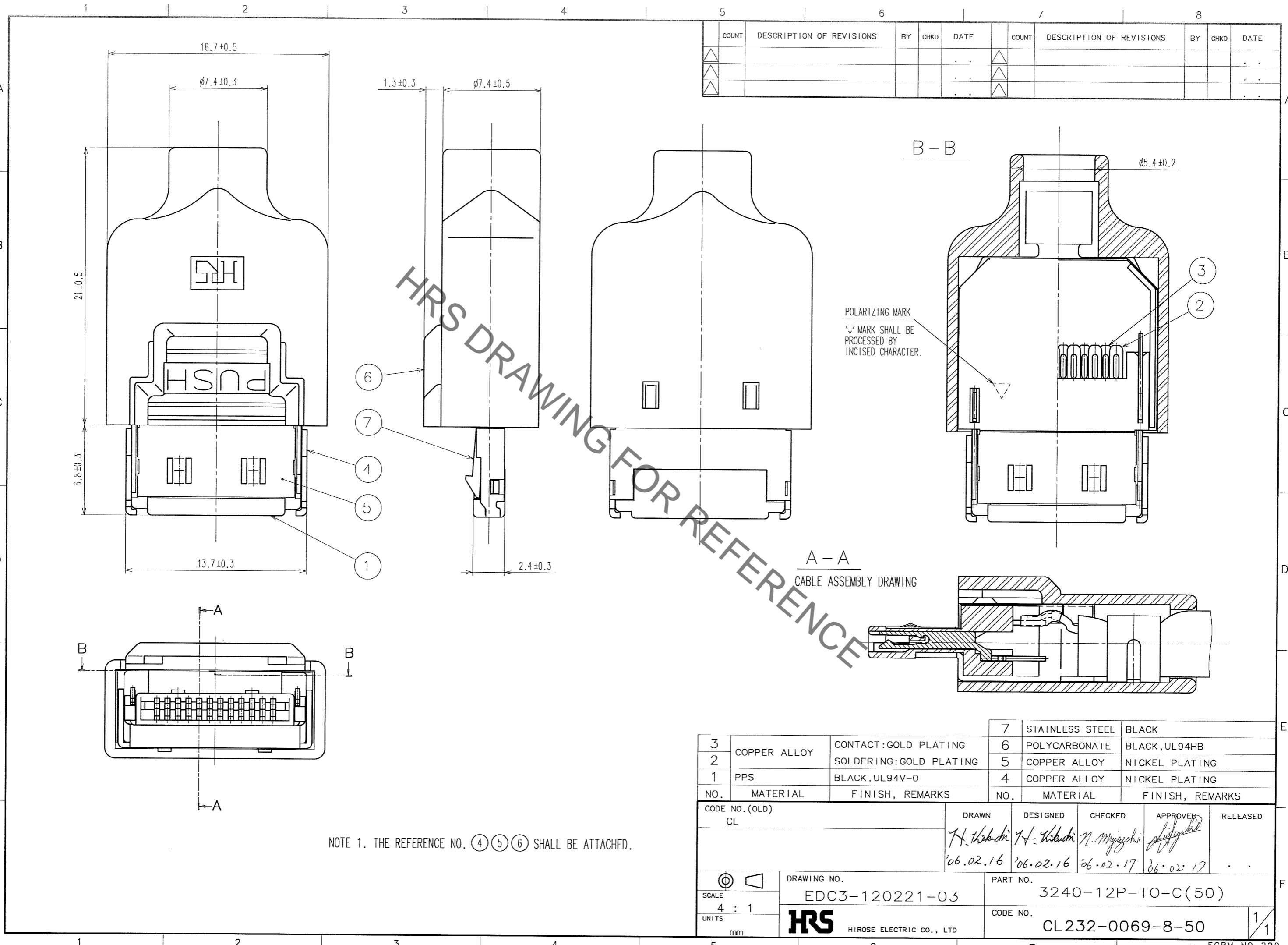


Oct.1.2021 Copyright 2021 HIROSE ELECTRIC CO., LTD. All Rights Reserved.
In case of consideration for using Automotive equipment / device which demand high reliability, kindly contact our sales window correspondents.



COUNT	DESCRIPTION OF REVISIONS	BY	CHKD	DATE	COUNT	DESCRIPTION OF REVISIONS	BY	CHKD	DATE
△					△				
△					△				
△					△				

POLARIZING MARK
▽ MARK SHALL BE PROCESSED BY INCISED CHARACTER.

A - A
CABLE ASSEMBLY DRAWING

NOTE 1. THE REFERENCE NO. ④ ⑤ ⑥ SHALL BE ATTACHED.

3	COPPER ALLOY	CONTACT:GOLD PLATING	7	STAINLESS STEEL	BLACK
2		SOLDERING:GOLD PLATING	6	POLYCARBONATE	BLACK, UL94HB
1	PPS	BLACK, UL94V-0	5	COPPER ALLOY	NICKEL PLATING
NO.	MATERIAL	FINISH, REMARKS	NO.	MATERIAL	FINISH, REMARKS

CODE NO. (OLD)	DRAWN	DESIGNED	CHECKED	APPROVED	RELEASED
CL	H. Hasegawa	H. Hasegawa	N. Miyazaki	[Signature]	
	'06.02.16	'06.02.16	06.02.17	06.02.17	

SCALE	DRAWING NO.	PART NO.
4 : 1	EDC3-120221-03	3240-12P-TO-C(50)
UNITS	HIROSE ELECTRIC CO., LTD	CODE NO.
mm	HRS	CL232-0069-8-50

X-ON Electronics

Largest Supplier of Electrical and Electronic Components

Click to view similar products for [Headers & Wire Housings](#) category:

Click to view products by [Hirose](#) manufacturer:

Other Similar products are found below :

[892-18-020-10-001101](#) [58102-G61-06LF](#) [582553-1](#) [0009485154](#) [009176003701906](#) [0050291907](#) [LY20-4P-DT1-P1E-BR](#) [02.125.8002.8](#)
[609-3404](#) [61062-3](#) [622-0430](#) [622-3653LF](#) [63453-116](#) [636-1030](#) [636-1427](#) [636-3427](#) [636-4007](#) [641938-9](#) [641991-4](#) [644827-2](#) [65817-010LF](#)
[65817-015LF](#) [65863-015LF](#) [66207-023LF](#) [67095-007LF](#) [67601157](#) [68648-049](#) [70.362.1628.0](#) [70-4210](#) [70-4226B](#) [70-4853B](#) [707-5020](#) [707-5028](#) [71.350.2428.0](#) [71918-208LF](#) [71961-016LF](#) [733-134](#) [733-162](#) [754199-000](#) [760-3052](#) [787-8014-00](#) [79531-3000](#) [FCN-360C032-B](#) [FCN-367T-T012/H](#) [FCN-723D010/2](#) [80.063.4001.1](#) [800-90-001-10-001000](#) [800-90-010-10-002000](#) [801-43-002-10-013000](#) [801-43-006-10-002000](#)