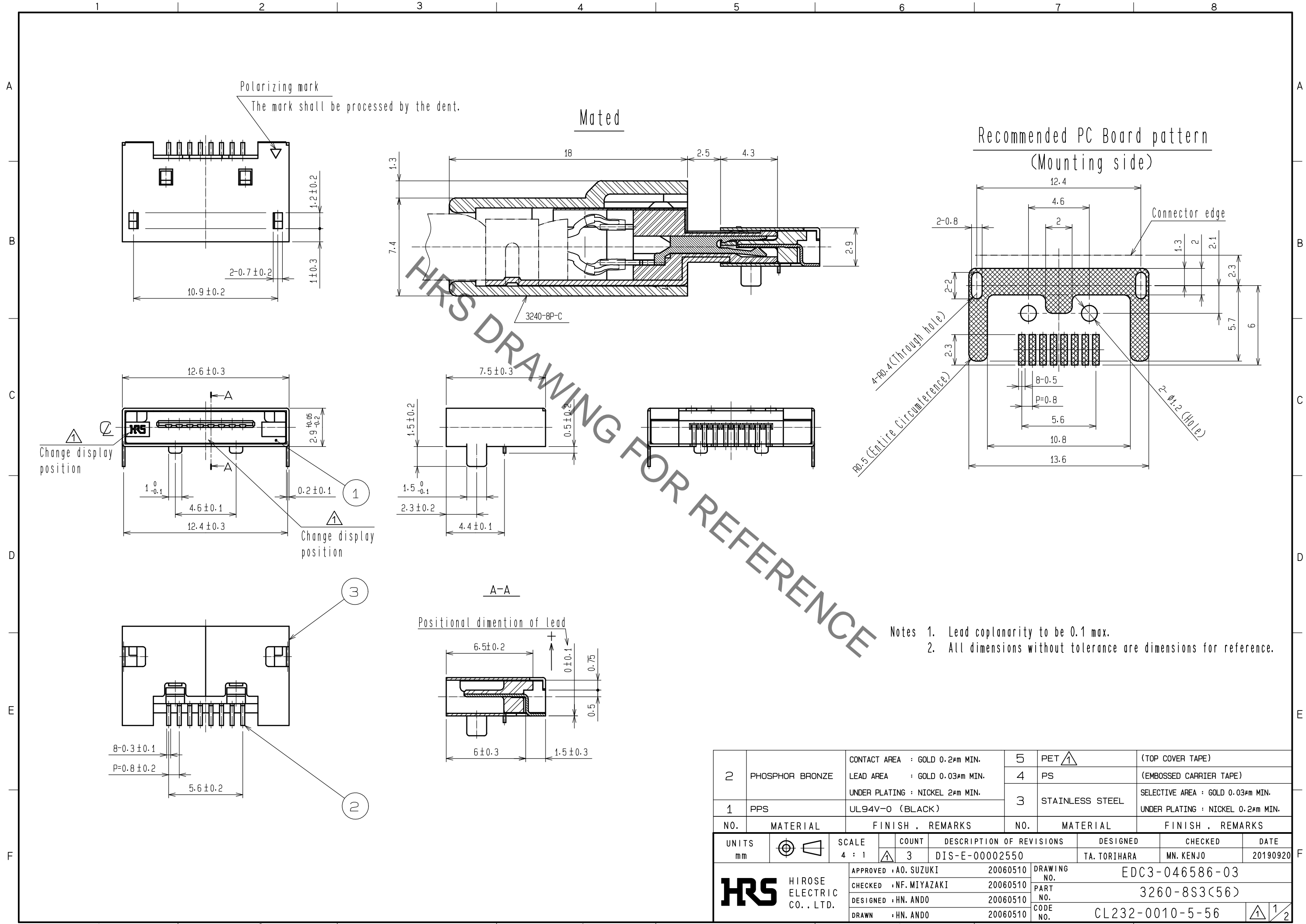


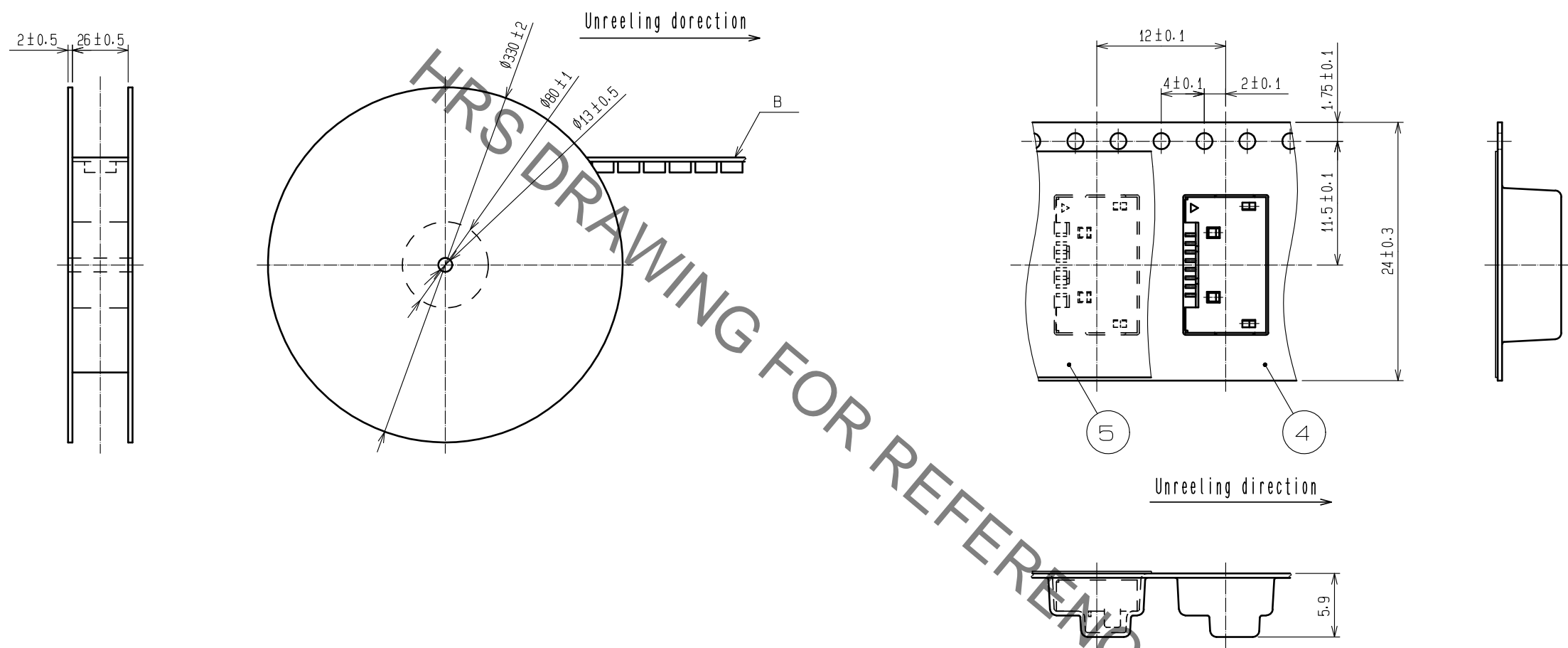
Sep.1.2021 Copyright 2021 HIROSE ELECTRIC CO., LTD. All Rights Reserved.  
In case of consideration for using Automotive equipment / device which demand high reliability, kindly contact our sales window correspondents.



2	PHOSPHOR BRONZE	CONTACT AREA : GOLD 0.2#m MIN. LEAD AREA : GOLD 0.03#m MIN. UNDER PLATING : NICKEL 2#m MIN.	5	PET $\triangle$	(TOP COVER TAPE)		
			4	PS	(EMBOSSD CARRIER TAPE)		
1	PPS	UL94V-0 (BLACK)	3	STAINLESS STEEL	SELECTIVE AREA : GOLD 0.03#m MIN. UNDER PLATING : NICKEL 0.2#m MIN.		
NO.	MATERIAL	FINISH . REMARKS	NO.	MATERIAL	FINISH . REMARKS		
UNITS mm	$\odot$ $\nabla$	SCALE 4 : 1	COUNT $\triangle$ 3	DESCRIPTION OF REVISIONS DIS-E-00002550	DESIGNED TA. TORIHARA	CHECKED MN. KENJO	DATE 20190920
<b>HRS</b> HIROSE ELECTRIC CO., LTD.		APPROVED : AO. SUZUKI 20060510	DRAWING NO. EDC3-046586-03				
		CHECKED : NF. MIYAZAKI 20060510	PART NO. 3260-8S3(56)				
		DESIGNED : HN. ANDO 20060510	CODE NO. CL232-0010-5-56				
		DRAWN : HN. ANDO 20060510	1/2				

Sep.1.2021 Copyright 2021 HIROSE ELECTRIC CO., LTD. All Rights Reserved.  
In case of consideration for using Automotive equipment / device which demand high reliability, kindly contact our sales window correspondents.

Style and dimension of reel(free)



<b>HRS</b>	DRAWING NO.	EDC3-046586-03
	PART NO.	3260-8S3(56)
	CODE NO.	CL232-0010-5-56
		2/2

## X-ON Electronics

Largest Supplier of Electrical and Electronic Components

*Click to view similar products for [Headers & Wire Housings](#) category:*

*Click to view products by [Hirose](#) manufacturer:*

Other Similar products are found below :

[892-18-020-10-001101](#) [58102-G61-06LF](#) [582553-1](#) [0009485154](#) [009176003701906](#) [0050291907](#) [LY20-4P-DT1-P1E-BR](#) [02.125.8002.8](#)  
[609-3404](#) [61062-3](#) [622-0430](#) [622-3653LF](#) [63453-116](#) [636-1030](#) [636-1427](#) [636-3427](#) [636-4007](#) [641938-9](#) [641991-4](#) [644827-2](#) [65817-010LF](#)  
[65817-015LF](#) [65863-015LF](#) [66207-023LF](#) [67095-007LF](#) [67601157](#) [68648-049](#) [70.362.1628.0](#) [70-4210](#) [70-4226B](#) [70-4853B](#) [707-5020](#) [707-5028](#) [71.350.2428.0](#) [71918-208LF](#) [71961-016LF](#) [733-134](#) [733-162](#) [754199-000](#) [760-3052](#) [787-8014-00](#) [79531-3000](#) [FCN-360C032-B](#) [FCN-367T-T012/H](#) [FCN-723D010/2](#) [80.063.4001.1](#) [800-90-001-10-001000](#) [800-90-010-10-002000](#) [801-43-002-10-013000](#) [801-43-006-10-002000](#)