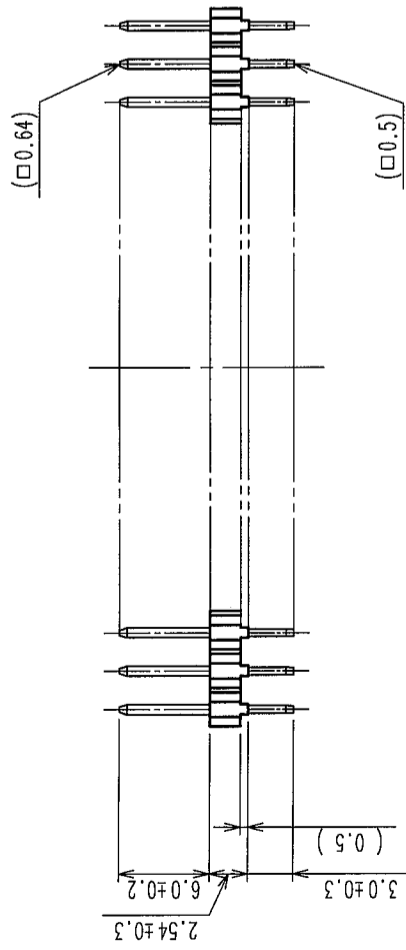
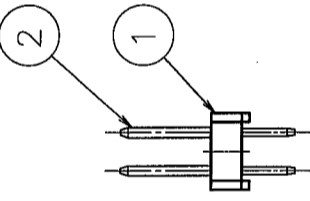
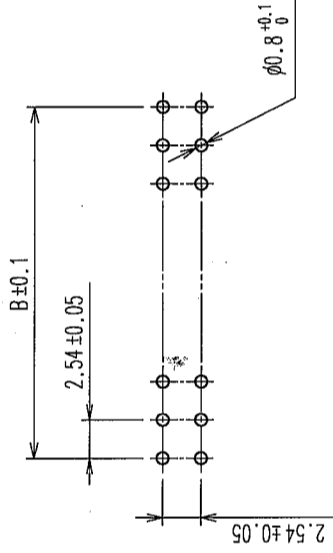
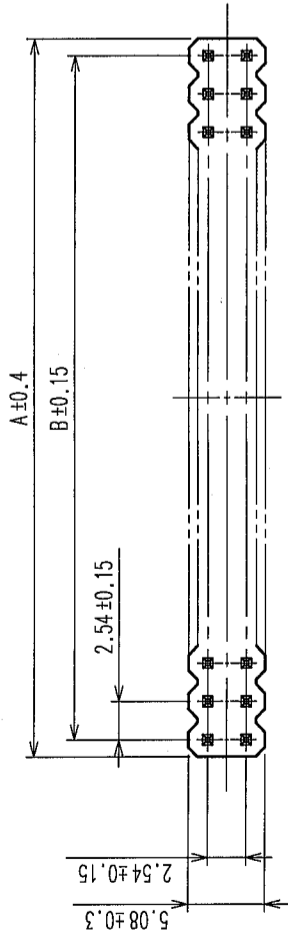


COUNT	DESCRIPTION OF REVISIONS	BY	CHKD	DATE	COUNT	DESCRIPTION OF REVISIONS	BY	CHKD	DATE
△					△				
△					△				
△					△				

RECOMMENDED PC BOARD HOLE PATTERN



PART No.	CODE No.	A	B
A1-4PA-2.54DSA(71)	CL619-0036-1-71	4.78	2.54
A1-6PA-2.54DSA(71)	CL619-0021-4-71	7.32	5.08
A1-8PA-2.54DSA(71)	CL619-0037-4-71	9.86	7.62
A1-10PA-2.54DSA(71)	CL619-0022-7-71	12.40	10.16
A1-12PA-2.54DSA(71)	CL619-0023-0-71	14.94	12.70
A1-14PA-2.54DSA(71)	CL619-0024-2-71	17.48	15.24
A1-16PA-2.54DSA(71)	CL619-0025-5-71	20.02	17.78
A1-18PA-2.54DSA(71)	CL619-0026-8-71	22.56	20.32
A1-20PA-2.54DSA(71)	CL619-0027-0-71	25.10	22.86
A1-24PA-2.54DSA(71)	CL619-0028-3-71	30.18	27.94
A1-26PA-2.54DSA(71)	CL619-0029-6-71	32.72	30.48
A1-30PA-2.54DSA(71)	CL619-0030-5-71	37.80	35.56
A1-34PA-2.54DSA(71)	CL619-0031-8-71	42.88	40.64
A1-40PA-2.54DSA(71)	CL619-0032-0-71	50.50	48.26
A1-50PA-2.54DSA(71)	CL619-0033-3-71	63.20	60.96
A1-60PA-2.54DSA(71)	CL619-0034-6-71	75.90	73.66
A1-64PA-2.54DSA(71)	CL619-0035-9-71	80.98	78.74

NOTES 1. THE DIMENSIONS IN PARENTHESES ARE FOR REFERENCE.
 2. NUMBER OF CONTACTS.

1	PBT	BLACK	UL94V-0	2	BRASS	CONTACT AREA : GOLD 0.2μm min DIP AREA : TIN-PLATING 2μm min UNDER PLATING : NICKEL 2.5μm min
NO.	MATERIAL	FINISH, REMARKS	NO.	MATERIAL	FINISH, REMARKS	
CODE NO. (OLD)	CL					
DRAWN		DESIGNED		CHECKED	APPROVED	RELEASED
K. NAKAMURA		K. NAKAMURA		H. Oyamaw	H. Oyamaw	
06.01.23		06.01.23		06.01.23	06.01.23	
DRAWING NO.		PART NO.				
EDC3-152791-21		A1-**-PA-2.54DSA(71)				
SCALE		CODE NO.				
FREE		HIROSE ELECTRIC CO., LTD		CL619		
UNITS				1/1		
mm						

TO	
PCK	

X-ON Electronics

Largest Supplier of Electrical and Electronic Components

Click to view similar products for [Headers & Wire Housings](#) category:

Click to view products by [Hirose](#) manufacturer:

Other Similar products are found below :

[892-18-020-10-001101](#) [58102-G61-06LF](#) [582553-1](#) [0009485154](#) [009176003701906](#) [0050291907](#) [LY20-4P-DT1-P1E-BR](#) [02.125.8002.8](#)
[609-3404](#) [61062-3](#) [622-0430](#) [622-3653LF](#) [63453-116](#) [636-1030](#) [636-1427](#) [636-3427](#) [636-4007](#) [641938-9](#) [641991-4](#) [644827-2](#) [65817-010LF](#)
[65817-015LF](#) [65863-015LF](#) [66207-023LF](#) [67095-007LF](#) [67601157](#) [68648-049](#) [70.362.1628.0](#) [70-4210](#) [70-4226B](#) [70-4853B](#) [707-5020](#) [707-5028](#) [71.350.2428.0](#) [71918-208LF](#) [71961-016LF](#) [733-134](#) [733-162](#) [754199-000](#) [760-3052](#) [787-8014-00](#) [79531-3000](#) [FCN-360C032-B](#) [FCN-367T-T012/H](#) [FCN-723D010/2](#) [80.063.4001.1](#) [800-90-001-10-001000](#) [800-90-010-10-002000](#) [801-43-002-10-013000](#) [801-43-006-10-002000](#)