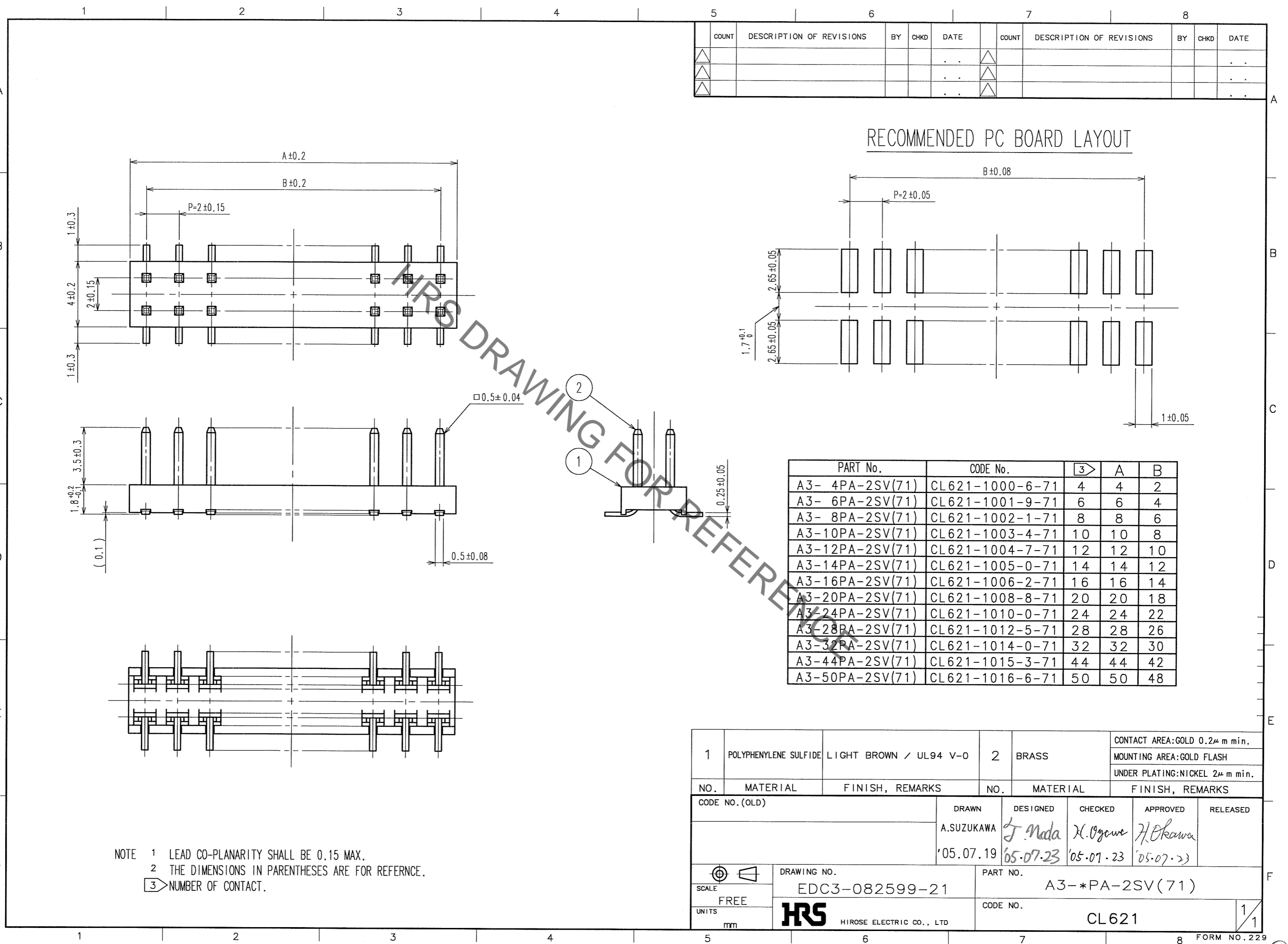
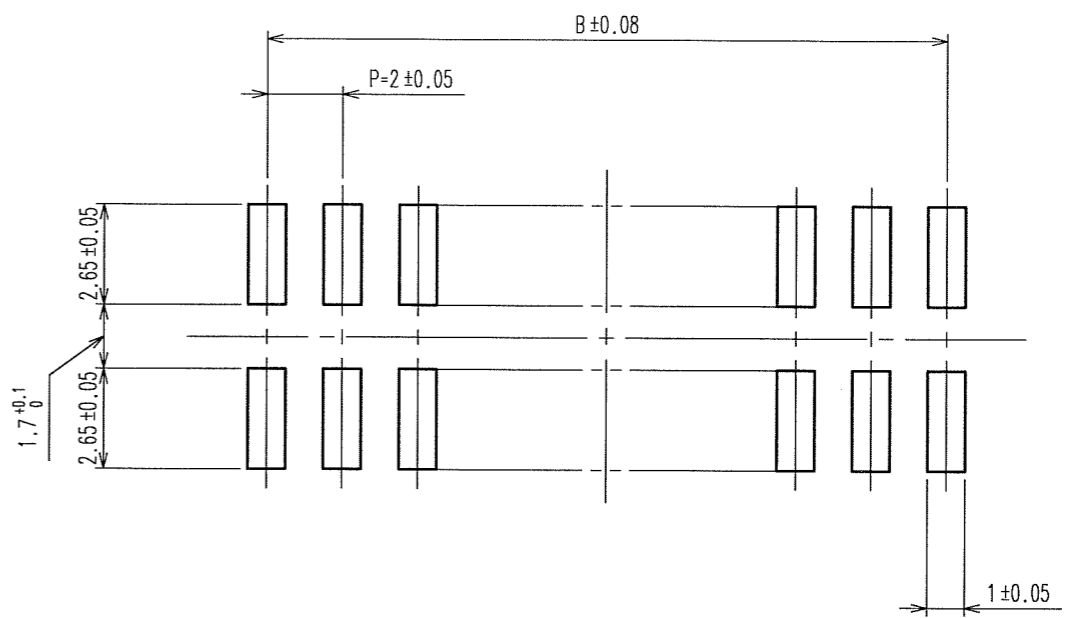


Sep.1.2021 Copyright 2021 HIROSE ELECTRIC CO., LTD. All Rights Reserved.  
In case of consideration for using Automotive equipment / device which demand high reliability, kindly contact our sales window correspondents.



| COUNT | DESCRIPTION OF REVISIONS | BY | CHKD | DATE | COUNT | DESCRIPTION OF REVISIONS | BY | CHKD | DATE |
|-------|--------------------------|----|------|------|-------|--------------------------|----|------|------|
|       |                          |    |      |      |       |                          |    |      |      |
|       |                          |    |      |      |       |                          |    |      |      |
|       |                          |    |      |      |       |                          |    |      |      |

RECOMMENDED PC BOARD LAYOUT



| PART No.        | CODE No.        | 3  | A  | B  |
|-----------------|-----------------|----|----|----|
| A3- 4PA-2SV(71) | CL621-1000-6-71 | 4  | 4  | 2  |
| A3- 6PA-2SV(71) | CL621-1001-9-71 | 6  | 6  | 4  |
| A3- 8PA-2SV(71) | CL621-1002-1-71 | 8  | 8  | 6  |
| A3-10PA-2SV(71) | CL621-1003-4-71 | 10 | 10 | 8  |
| A3-12PA-2SV(71) | CL621-1004-7-71 | 12 | 12 | 10 |
| A3-14PA-2SV(71) | CL621-1005-0-71 | 14 | 14 | 12 |
| A3-16PA-2SV(71) | CL621-1006-2-71 | 16 | 16 | 14 |
| A3-20PA-2SV(71) | CL621-1008-8-71 | 20 | 20 | 18 |
| A3-24PA-2SV(71) | CL621-1010-0-71 | 24 | 24 | 22 |
| A3-28PA-2SV(71) | CL621-1012-5-71 | 28 | 28 | 26 |
| A3-32PA-2SV(71) | CL621-1014-0-71 | 32 | 32 | 30 |
| A3-44PA-2SV(71) | CL621-1015-3-71 | 44 | 44 | 42 |
| A3-50PA-2SV(71) | CL621-1016-6-71 | 50 | 50 | 48 |

| 1              | POLYPHENYLENE SULFIDE | LIGHT BROWN / UL94 V-0 | 2                        | BRASS                          | CONTACT AREA:GOLD 0.2μ m min. |
|----------------|-----------------------|------------------------|--------------------------|--------------------------------|-------------------------------|
|                |                       |                        |                          | MOUNTING AREA:GOLD FLASH       |                               |
|                |                       |                        |                          | UNDER PLATING:NICKEL 2μ m min. |                               |
| NO.            | MATERIAL              | FINISH, REMARKS        | NO.                      | MATERIAL                       | FINISH, REMARKS               |
| CODE NO. (OLD) |                       |                        | DRAWN                    | DESIGNED                       | CHECKED                       |
|                |                       |                        | A.SUZUKAWA               | J. Nada                        | K. Ogawa                      |
|                |                       |                        | '05.07.19                | '05.07.23                      | '05.07.23                     |
|                |                       |                        | APPROVED                 | RELEASED                       |                               |
|                |                       |                        | H. Okawa                 |                                |                               |
|                |                       |                        | '05.07.23                |                                |                               |
| DRAWING NO.    |                       |                        | PART NO.                 |                                |                               |
| EDC3-082599-21 |                       |                        | A3-*PA-2SV(71)           |                                |                               |
| SCALE          |                       |                        | CODE NO.                 |                                |                               |
| FREE           |                       |                        | CL621                    |                                |                               |
| UNITS          |                       |                        | 1/1                      |                                |                               |
| mm             |                       |                        | HIROSE ELECTRIC CO., LTD |                                |                               |

NOTE 1 LEAD CO-PLANARITY SHALL BE 0.15 MAX.  
2 THE DIMENSIONS IN PARENTHESES ARE FOR REFERENCE.  
3 NUMBER OF CONTACT.

TO  
PCK

## X-ON Electronics

Largest Supplier of Electrical and Electronic Components

*Click to view similar products for [Headers & Wire Housings](#) category:*

*Click to view products by [Hirose](#) manufacturer:*

Other Similar products are found below :

[892-18-020-10-001101](#) [58102-G61-06LF](#) [582553-1](#) [0009485154](#) [009176003701906](#) [0050291907](#) [LY20-4P-DT1-P1E-BR](#) [02.125.8002.8](#)  
[609-3404](#) [61062-3](#) [622-0430](#) [622-3653LF](#) [63453-116](#) [636-1030](#) [636-1427](#) [636-3427](#) [636-4007](#) [641938-9](#) [641991-4](#) [644827-2](#) [65817-010LF](#)  
[65817-015LF](#) [65863-015LF](#) [66207-023LF](#) [67095-007LF](#) [67601157](#) [68648-049](#) [70.362.1628.0](#) [70-4210](#) [70-4226B](#) [70-4853B](#) [707-5020](#) [707-](#)  
[5028](#) [71.350.2428.0](#) [71918-208LF](#) [71961-016LF](#) [733-134](#) [733-162](#) [754199-000](#) [760-3052](#) [787-8014-00](#) [79531-3000](#) [FCN-360C032-B](#) [FCN-](#)  
[367T-T012/H](#) [FCN-723D010/2](#) [80.063.4001.1](#) [800-90-001-10-001000](#) [800-90-010-10-002000](#) [801-43-002-10-013000](#) [801-43-006-10-002000](#)