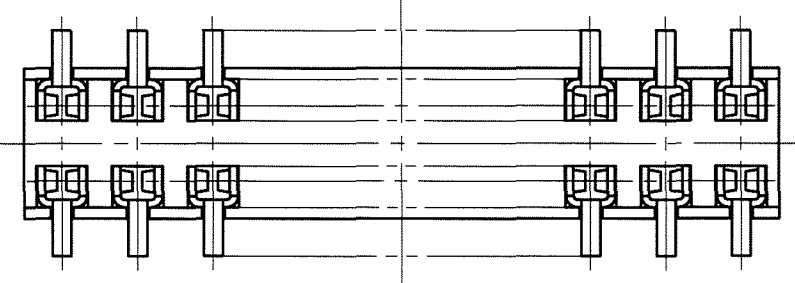
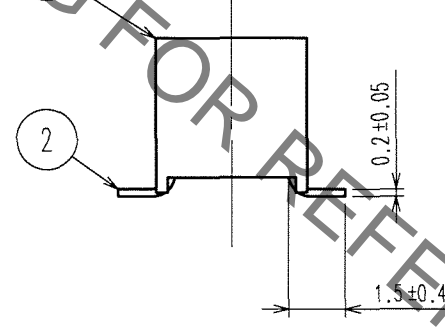
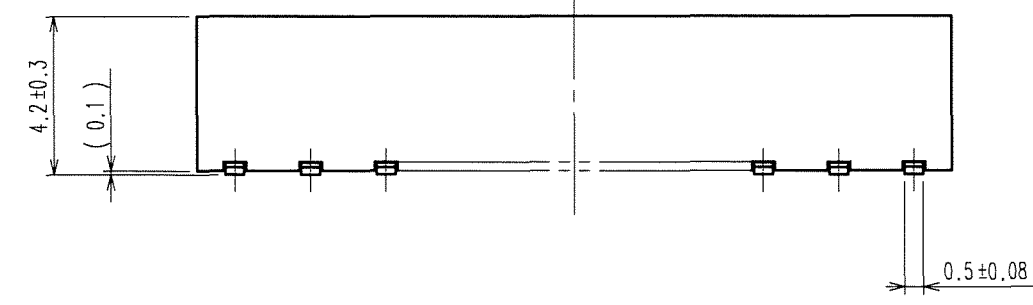
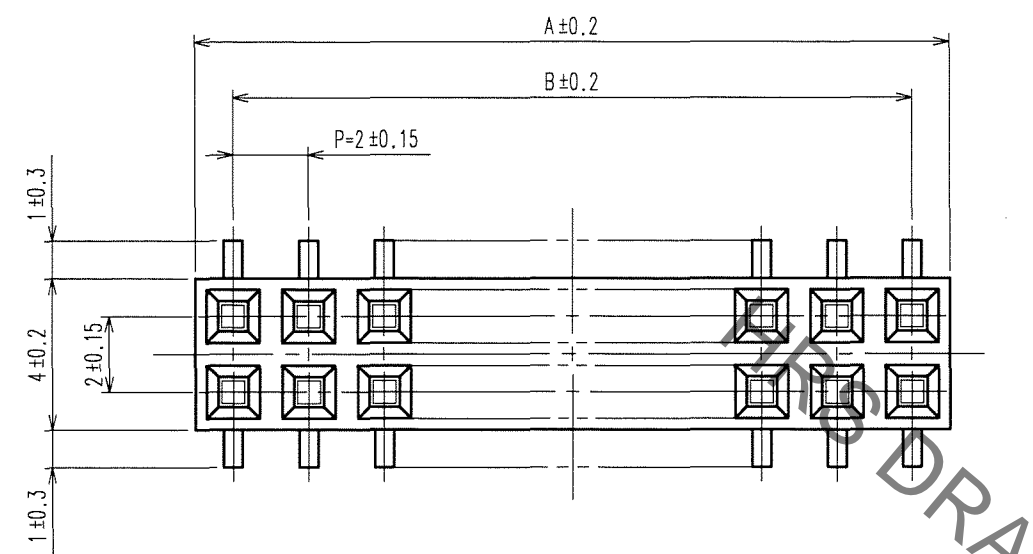
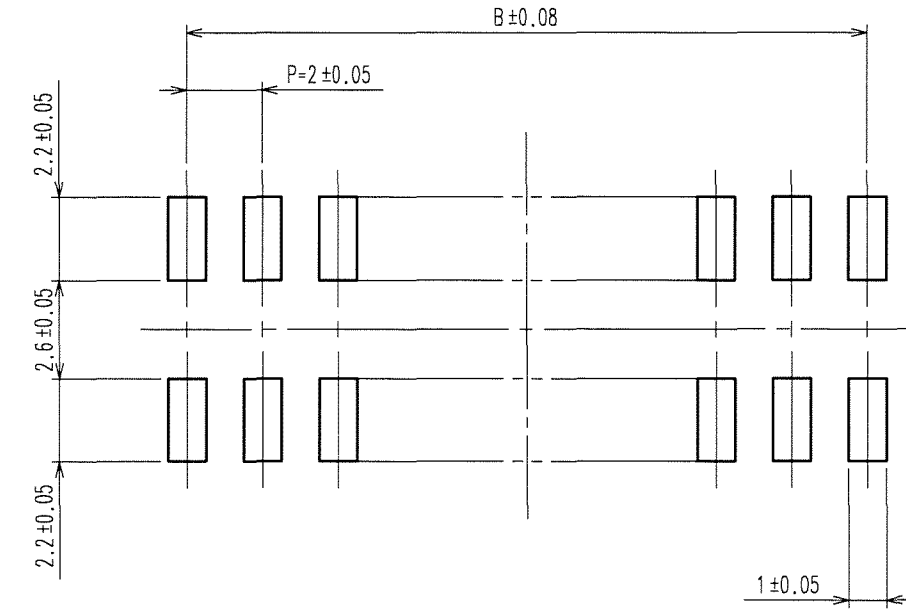


Oct.1.2021 Copyright 2021 HIROSE ELECTRIC CO., LTD. All Rights Reserved.  
In case of consideration for using Automotive equipment / device which demand high reliability, kindly contact our sales window correspondents.

| COUNT | DESCRIPTION OF REVISIONS | BY | CHKD | DATE | COUNT | DESCRIPTION OF REVISIONS | BY | CHKD | DATE |
|-------|--------------------------|----|------|------|-------|--------------------------|----|------|------|
| △     |                          |    |      | ..   | △     |                          |    |      | ..   |
| △     |                          |    |      | ..   | △     |                          |    |      | ..   |
| △     |                          |    |      | ..   | △     |                          |    |      | ..   |

RECOMMENDED LAND PATTERN DIMENSION OF PCB (MOUNTING SIDE)



| PART No.        | CODE No.        | 3  | A  | B  |
|-----------------|-----------------|----|----|----|
| A3- 4DA-2SV(71) | CL621-1100-0-71 | 4  | 4  | 2  |
| A3- 6DA-2SV(71) | CL621-1101-3-71 | 6  | 6  | 4  |
| A3- 8DA-2SV(71) | CL621-1102-6-71 | 8  | 8  | 6  |
| A3-10DA-2SV(71) | CL621-1103-9-71 | 10 | 10 | 8  |
| A3-12DA-2SV(71) | CL621-1104-1-71 | 12 | 12 | 10 |
| A3-14DA-2SV(71) | CL621-1105-4-71 | 14 | 14 | 12 |
| A3-16DA-2SV(71) | CL621-1106-7-71 | 16 | 16 | 14 |
| A3-20DA-2SV(71) | CL621-1108-2-71 | 20 | 20 | 18 |
| A3-24DA-2SV(71) | CL621-1110-4-71 | 24 | 24 | 22 |
| A3-28DA-2SV(71) | CL621-1112-0-71 | 28 | 28 | 26 |
| A3-32DA-2SV(71) | CL621-1114-5-71 | 32 | 32 | 30 |

NOTE 1 LEAD CO-PLANARITY SHALL BE 0.15 MAX.  
2 THE DIMENSIONS IN PARENTHESES ARE FOR REFERENCE.  
3 NUMBER OF CONTACT.

|     |
|-----|
| TO  |
| PCK |
|     |
|     |

|                |          |                          |             |                 |  |          |
|----------------|----------|--------------------------|-------------|-----------------|--|----------|
| 1              | PPS      | LIGHT BROWN / UL94 V-0   | 2           | PHOSPHOR BRONZE | CONTACT AREA:GOLD 0.2μ m min.<br>LEAD AREA:TIN-PLATING 1μ m min.<br>UNDER PLATING:NICKEL 1μ m min. |          |
| NO.            | MATERIAL | FINISH, REMARKS          | NO.         | MATERIAL        | FINISH, REMARKS  |          |
| CODE NO. (OLD) |          | DRAWN                    | DESIGNED    | CHECKED         | APPROVED   | RELEASED |
|                |          | A.SUZUKAWA               | H. Nakamura | M. Ogawa        | H. Okawa   |          |
|                |          | '06.05.09                | '06.05.10   | '06.05.10       | '06.05.10  |          |
| DRAWING NO.    |          | PART NO.                 |             |                 |  |          |
| EDC3-082603-21 |          | A3-*DA-2SV(71)           |             |                 |  |          |
| SCALE          |          | CODE NO.                 |             |                 |  |          |
| FREE           |          | CL621                    |             |                 |  |          |
| UNITS          |          | HIROSE ELECTRIC CO., LTD |             |                 |  |          |
| mm             |          |                          |             |                 |  |          |

## X-ON Electronics

Largest Supplier of Electrical and Electronic Components

*Click to view similar products for [Headers & Wire Housings](#) category:*

*Click to view products by [Hirose](#) manufacturer:*

Other Similar products are found below :

[892-18-020-10-001101](#) [58102-G61-06LF](#) [582553-1](#) [0009485154](#) [009176003701906](#) [0050291907](#) [LY20-4P-DT1-P1E-BR](#) [02.125.8002.8](#)  
[609-3404](#) [61062-3](#) [622-0430](#) [622-3653LF](#) [63453-116](#) [636-1030](#) [636-1427](#) [636-3427](#) [636-4007](#) [641938-9](#) [641991-4](#) [644827-2](#) [65817-010LF](#)  
[65817-015LF](#) [65863-015LF](#) [66207-023LF](#) [67095-007LF](#) [67601157](#) [68648-049](#) [70.362.1628.0](#) [70-4210](#) [70-4226B](#) [70-4853B](#) [707-5020](#) [707-5028](#) [71.350.2428.0](#) [71918-208LF](#) [71961-016LF](#) [733-134](#) [733-162](#) [754199-000](#) [760-3052](#) [787-8014-00](#) [79531-3000](#) [FCN-360C032-B](#) [FCN-367T-T012/H](#) [FCN-723D010/2](#) [80.063.4001.1](#) [800-90-001-10-001000](#) [800-90-010-10-002000](#) [801-43-002-10-013000](#) [801-43-006-10-002000](#)