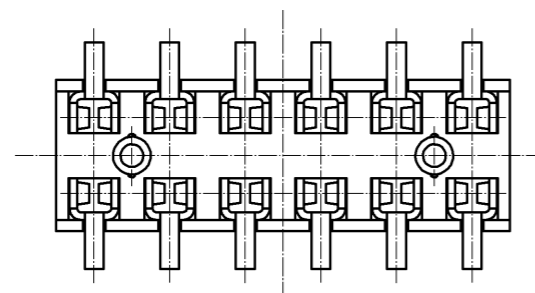
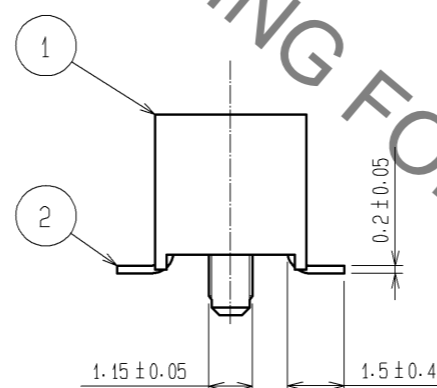
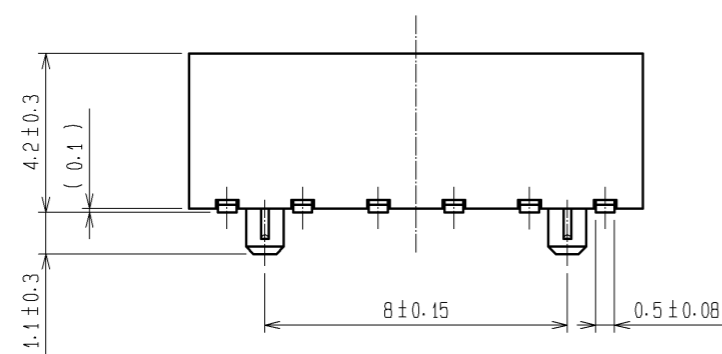
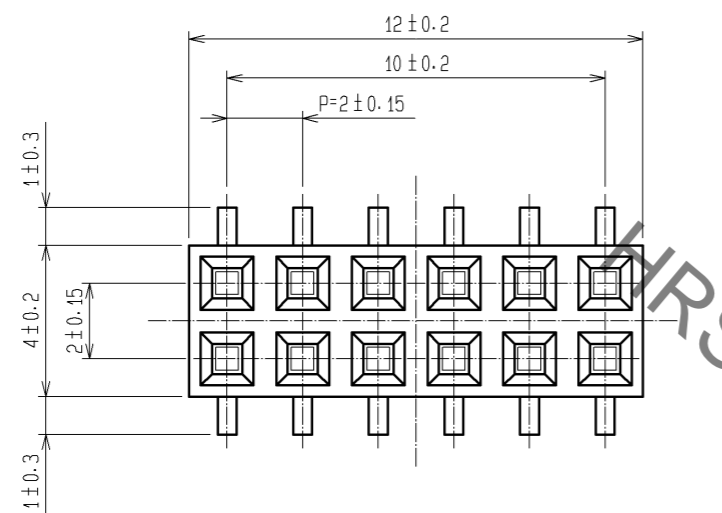
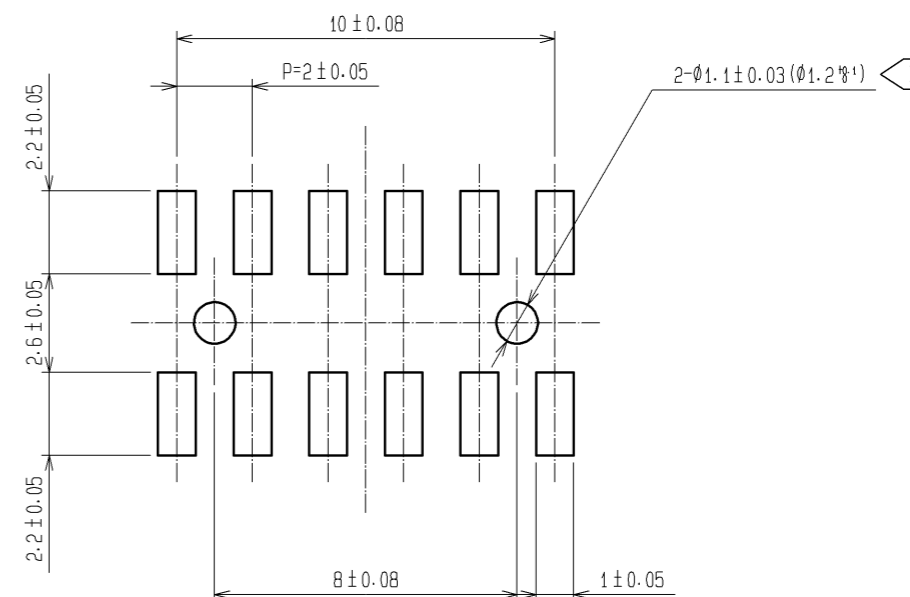


Oct.1.2021 Copyright 2021 HIROSE ELECTRIC CO., LTD. All Rights Reserved.  
 In case of consideration for using Automotive equipment / device which demand high reliability, kindly contact our sales window correspondents.



RECOMMENDED LAND PATTERN DIMENSION OF PCB (MOUNTING SIDE)  
 (RECOMMENDED METAL MASK THICKNESS:0.2mm)



NOTE 1 LEAD CO-PLANARITY SHALL BE 0.15 MAX.  
 2 THE DIMENSIONS IN PARENTHESES ARE FOR REFERENCE.  
 3 FOR AUTOMATED MOUNTING, RECOMMENDED THROUGH HOLE DIAMETER OF BOSS IS 1.2±0.1.

|                                      |          |                         |            |                          |   |         |      |
|--------------------------------------|----------|-------------------------|------------|--------------------------|---|---------|------|
| 1                                    | PPS      | LIGHT BROWN / UL94V-0   | 2          | PHOSPHOR BRONZE          | CONTACT AREA:GOLD 0.2µm min.<br>LEAD AREA:TIN-PLATING 1µm min.<br>UNDER PLATING:NICKEL 1µm min. |         |      |
| NO.                                  | MATERIAL | FINISH . REMARKS        | NO.        | MATERIAL                 | FINISH . REMARKS  |         |      |
| UNITS<br>mm                          |          | SCALE<br>5 : 1          | COUNT<br>△ | DESCRIPTION OF REVISIONS | DESIGNED  | CHECKED | DATE |
| <b>HRS</b> HIROSE ELECTRIC CO., LTD. |          | APPROVED : HS. OKAWA    | 08.08.01   | DRAWING NO.              | EDC3-082677-21  |         |      |
|                                      |          | CHECKED : HT. YAMAGUCHI | 08.08.01   | PART NO.                 | A3A-12DA-2SV(71)  |         |      |
|                                      |          | DESIGNED : SY. KAMIGA   | 08.08.01   | CODE NO.                 | CL621-1144-6-71   |         |      |
|                                      |          | DRAWN : HK. SUNADORI    | 08.07.31   |                          | △ 1/1   |         |      |

## X-ON Electronics

Largest Supplier of Electrical and Electronic Components

*Click to view similar products for [Headers & Wire Housings](#) category:*

*Click to view products by [Hirose](#) manufacturer:*

Other Similar products are found below :

[892-18-020-10-001101](#) [58102-G61-06LF](#) [582553-1](#) [0009485154](#) [009176003701906](#) [0050291907](#) [LY20-4P-DT1-P1E-BR](#) [02.125.8002.8](#)  
[609-3404](#) [61062-3](#) [622-0430](#) [622-3653LF](#) [63453-116](#) [636-1030](#) [636-1427](#) [636-3427](#) [636-4007](#) [641938-9](#) [641991-4](#) [644827-2](#) [65817-010LF](#)  
[65817-015LF](#) [65863-015LF](#) [66207-023LF](#) [67095-007LF](#) [67601157](#) [68648-049](#) [70.362.1628.0](#) [70-4210](#) [70-4226B](#) [70-4853B](#) [707-5020](#) [707-5028](#) [71.350.2428.0](#) [71918-208LF](#) [71961-016LF](#) [733-134](#) [733-162](#) [754199-000](#) [760-3052](#) [787-8014-00](#) [79531-3000](#) [FCN-360C032-B](#) [FCN-367T-T012/H](#) [FCN-723D010/2](#) [80.063.4001.1](#) [800-90-001-10-001000](#) [800-90-010-10-002000](#) [801-43-002-10-013000](#) [801-43-006-10-002000](#)