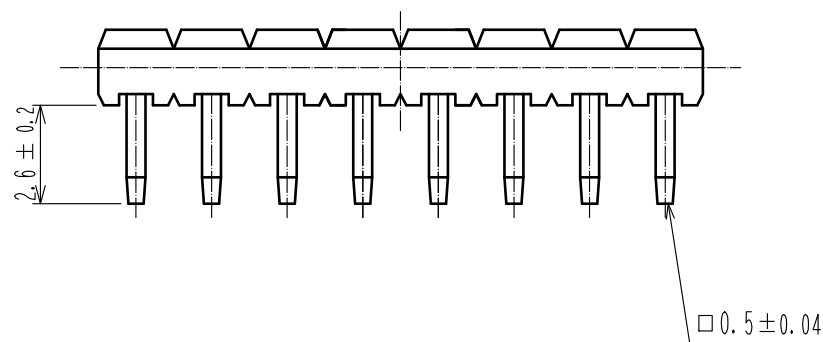
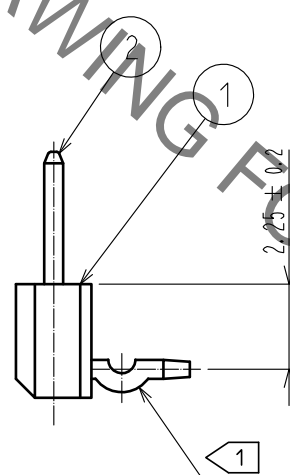
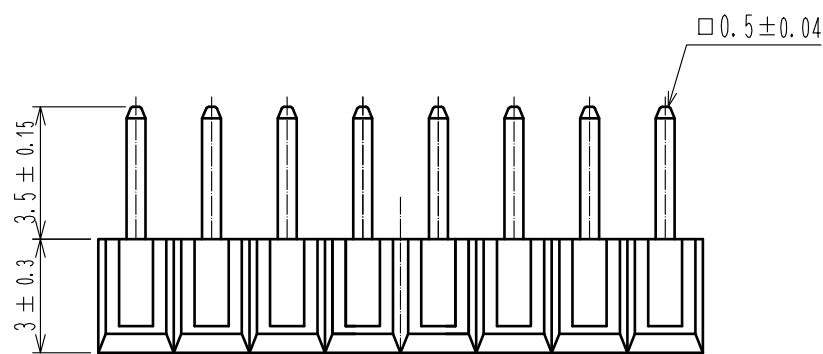
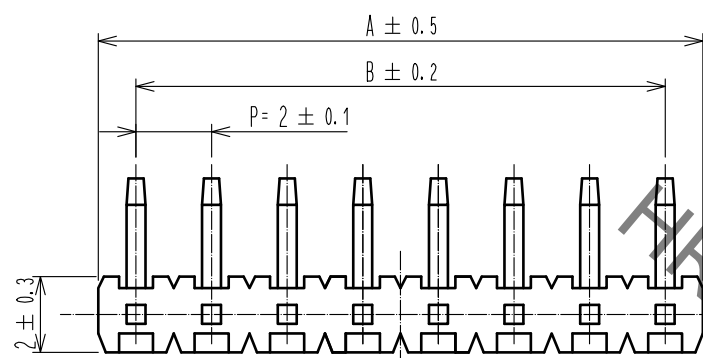
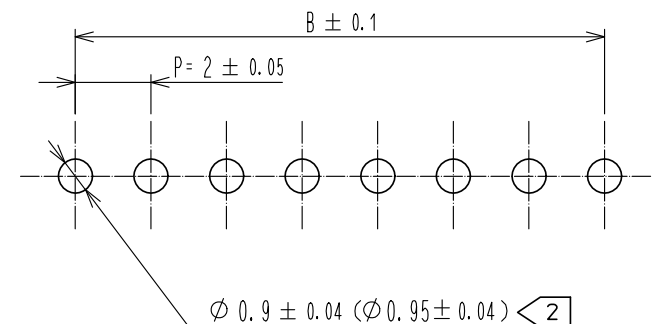


Jul.1.2021 Copyright 2021 HIROSE ELECTRIC CO., LTD. All Rights Reserved.
 In case of consideration for using Automotive equipment / device which demand high reliability, kindly contact our sales window correspondents.



RECOMMENDED PC BOARD HOLE PATTERN

(PCB THICKNESS : t=1.6)



PART NO.	CODE NO.	PIN	A	B	KINKED POSITION $\triangleleft 1$
A4B- 2PA-2DS(51)	CL622-0351-1-51	2	4	2	2PINS
A4B- 3PA-2DS(51)	CL622-0352-4-51	3	6	4	1 OR 2 PINS ON EVERY OTHER PINS
A4B- 4PA-2DS(51)	CL622-0353-7-51	4	8	6	2 PINS ON EVERY OTHER PINS
A4B- 5PA-2DS(51)	CL622-0354-0-51	5	10	8	2 OR 3 PINS ON EVERY OTHER PINS
A4B- 6PA-2DS(51)	CL622-0355-2-51	6	12	10	3 PINS ON EVERY OTHER PINS
A4B- 7PA-2DS(51)	CL622-0356-5-51	7	14	12	3 OR 4 PINS ON EVERY OTHER PINS
A4B- 8PA-2DS(51)	CL622-0357-8-51	8	16	14	4 PINS ON EVERY OTHER PINS
A4B- 9PA-2DS(51)	CL622-0358-0-51	9	18	16	4 OR 5 PINS ON EVERY OTHER PINS
A4B-10PA-2DS(51)	CL622-0359-3-51	10	20	18	5 PINS ON EVERY OTHER PINS
A4B-11PA-2DS(51)	CL622-0360-2-51	11	22	20	5 OR 6 PINS ON EVERY OTHER PINS
A4B-12PA-2DS(51)	CL622-0361-5-51	12	24	22	6 PINS ON EVERY OTHER PINS
A4B-13PA-2DS(51)	CL622-0362-8-51	13	26	24	6 OR 7 PINS ON EVERY OTHER PINS
A4B-14PA-2DS(51)	CL622-0363-0-51	14	28	26	7 PINS ON EVERY OTHER PINS
A4B-15PA-2DS(51)	CL622-0364-3-51	15	30	28	7 OR 8 PINS ON EVERY OTHER PINS
A4B-16PA-2DS(51)	CL622-0365-6-51	16	32	30	8 PINS ON EVERY OTHER PINS

NOTE $\triangleleft 1$ KINKED POSITION IS SHOWN IN THE TABLE.
 $\triangleleft 2$ THROUGH HOLE DIMENSION SHALL BE $\phi 0.95 \pm 0.04$ WHEN NUMBER OF POSITIONS IS MORE THAN 14.

1	POLYAMIDE	BLACK	UL94V-0	2	BRASS	CONTACT AREA : GOLD FLASH		
						DIP AREA : TIN-PLATING 2 μ m		
						UNDER PLATING : NICKEL 2 μ m		
NO.	MATERIAL	FINISH	REMARKS	NO.	MATERIAL	FINISH . REMARKS		
UNITS	\odot \triangleleft	SCALE	COUNT	DESCRIPTION OF REVISIONS		DESIGNED	CHECKED	DATE
mm		5 : 1	\triangleleft					
HRS HIROSE ELECTRIC CO., LTD.		APPROVED : NH. NAKATA	17. 04. 10	DRAWING NO.		EDC-375931-00-00		
		CHECKED : HT. YAMAGUCHI	17. 04. 10	PART NO.		A4B- * PA-2DS(51)		
		DESIGNED : HR. NAGAYASU	17. 04. 10	CODE NO.		CL622		$\triangleleft 1$
		DRAWN : HR. NAGAYASU	17. 04. 10					

X-ON Electronics

Largest Supplier of Electrical and Electronic Components

Click to view similar products for [Headers & Wire Housings](#) category:

Click to view products by [Hirose](#) manufacturer:

Other Similar products are found below :

[892-18-020-10-001101](#) [58102-G61-06LF](#) [582553-1](#) [0009485154](#) [009176003701906](#) [0050291907](#) [LY20-4P-DT1-P1E-BR](#) [02.125.8002.8](#)
[609-3404](#) [61062-3](#) [622-0430](#) [622-3653LF](#) [63453-116](#) [636-1030](#) [636-1427](#) [636-3427](#) [636-4007](#) [641938-9](#) [641991-4](#) [644827-2](#) [65817-010LF](#)
[65817-015LF](#) [65863-015LF](#) [66207-023LF](#) [67095-007LF](#) [67601157](#) [68648-049](#) [70.362.1628.0](#) [70-4210](#) [70-4226B](#) [70-4853B](#) [707-5020](#) [707-](#)
[5028](#) [71.350.2428.0](#) [71918-208LF](#) [71961-016LF](#) [733-134](#) [733-162](#) [754199-000](#) [760-3052](#) [787-8014-00](#) [79531-3000](#) [FCN-360C032-B](#) [FCN-](#)
[367T-T012/H](#) [FCN-723D010/2](#) [80.063.4001.1](#) [800-90-001-10-001000](#) [800-90-010-10-002000](#) [801-43-002-10-013000](#) [801-43-006-10-002000](#)