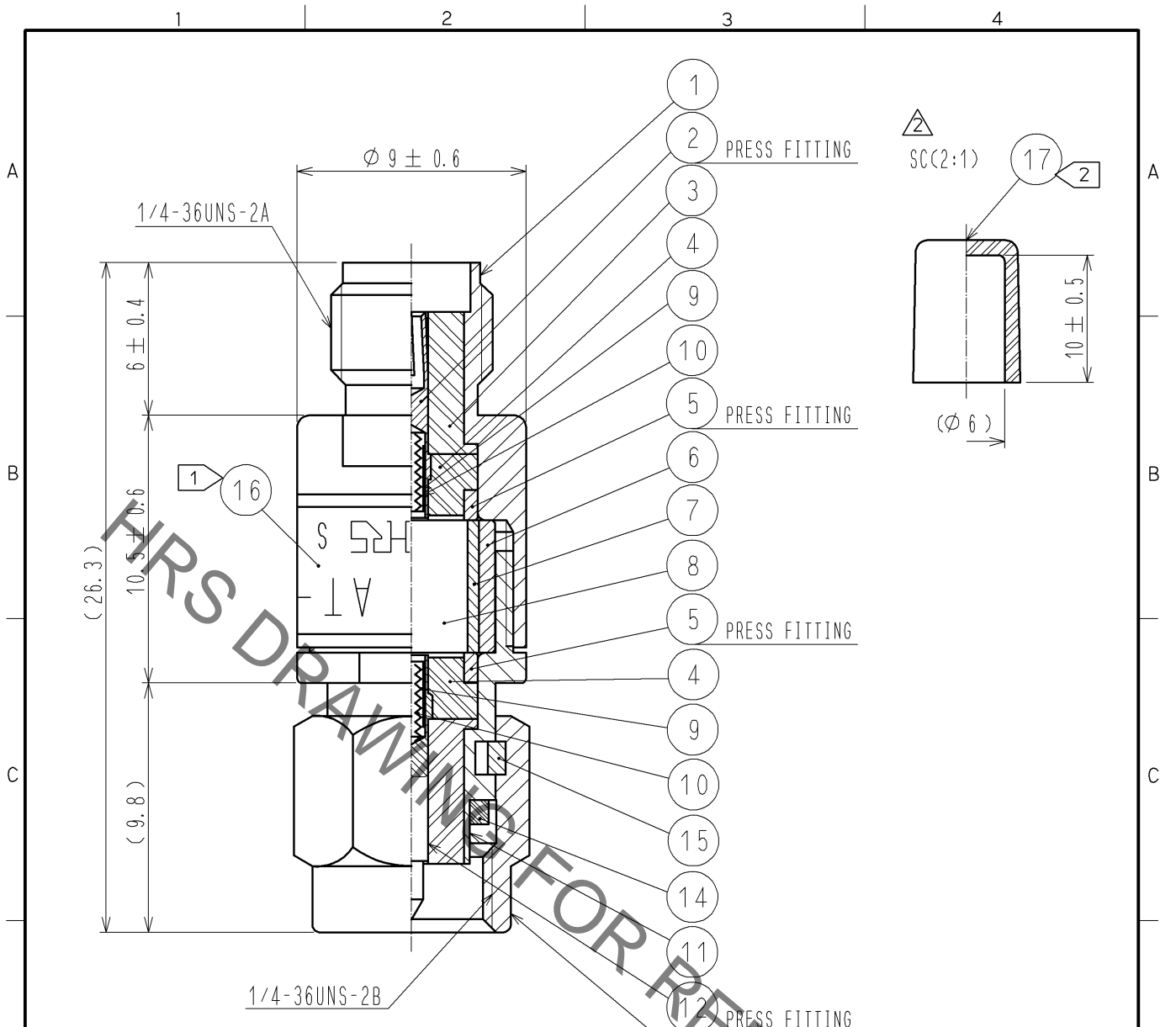


Jan.1.2022 Copyright 2022 HIROSE ELECTRIC CO., LTD. All Rights Reserved.  
 In case of consideration for using Automotive equipment / device which demand high reliability, kindly contact our sales window correspondents.



NOTE 1 INDICATION OF THE LABEL.  
 · AT-110V  
 · 10dB  
 · HRS  
 · S. NO.

2 Ref no. 17 is delivered with being attached to ref no. 1.

| 9   | BERYLLIUM COPPER | GOLD PLATING   |         |                           |                |        |         |
|-----|------------------|----------------|---------|---------------------------|----------------|--------|---------|
| 8   | ALUMINA          |                | 17      | STYRENIC-BASED ELASTOMERS | NATURAL        |        |         |
| 7   | BERYLLIUM COPPER | GOLD PLATING   | 16      |                           | LABEL          |        |         |
| 6   | BRASS            | NICKEL PLATING | 15      | BERYLLIUM COPPER          | NICKEL PLATING |        |         |
| 5   | BRASS            | NICKEL PLATING | 14      | SILICON RUBBER            |                |        |         |
| 4   | PTFE             |                | 13      | STAINLESS STEEL           | PASSIVATED     |        |         |
| 3   | PTFE             |                | 12      | BERYLLIUM COPPER          | GOLD PLATING   |        |         |
| 2   | BERYLLIUM COPPER | GOLD PLATING   | 11      | STAINLESS STEEL           | PASSIVATED     |        |         |
| 1   | STAINLESS STEEL  | PASSIVATED     | 10      | PIANO WIRE                |                |        |         |
| NO. | MATERIAL         | FINISH         | REMARKS | NO.                       | MATERIAL       | FINISH | REMARKS |

|  |  |                |  |  |                          |                        |                    |
|--|--|----------------|--|--|--------------------------|------------------------|--------------------|
| UNITS<br>mm  |  | SCALE<br>4 : 1 | COUNT<br><span style="border: 1px solid black; padding: 2px;">2</span> | DESCRIPTION OF REVISIONS<br>DIS-K-002989                                   | DESIGNED<br>TO. KATAYAMA | CHECKED<br>KY. SHIMIZU | DATE<br>13. 07. 03 |
| <b>HRS</b> HIROSE ELECTRIC CO., LTD.<br>APPROVED : MT. SHIBUTANI 11. 07. 21<br>CHECKED : KY. SHIMIZU 11. 07. 21<br>DESIGNED : TO. KATAYAMA 11. 07. 21<br>DRAWN : TO. KATAYAMA 11. 07. 21 |  |                |  | DRAWING NO. EDC4-181122-00<br>PART NO. AT-110V<br>CODE NO. CL354-0272-7-00 |                          |                        |                    |

## X-ON Electronics

Largest Supplier of Electrical and Electronic Components

*Click to view similar products for [Attenuators - Interconnects](#) category:*

*Click to view products by [Hirose](#) manufacturer:*

Other Similar products are found below :

[R411803119](#) [R413806115](#) [R413808000](#) [R413810115](#) [R413850115](#) [R414510000](#) [R414701000](#) [R415303000](#) [BNC-13](#) [R411800121](#)  
[R411801121](#) [R412412124](#) [R412450000](#) [R413800000](#) [R413805000](#) [R413830000](#) [R413840115](#) [R414730000](#) [R415420000](#) [R415703000](#)  
[R416010000](#) [R420003110](#) [R411801000](#) [R411815121](#) [R413305000](#) [R413801000](#) [R414520000](#) [R411808121](#) [R412500124](#) [R412414124](#)  
[R412501124](#) [HMC-C584](#) [R413802000](#) [R412400124](#) [R411700124](#) [R417310130](#) [R411801119](#) [R412419124](#) [R411703124](#) [R412401124](#)  
[R443131000](#) [R417130110](#) [R414700000](#) [R414505000](#) [R411802119](#) [R417720128](#) [R420706110](#) [R413811000](#) [R413803115](#) [R414501000](#)