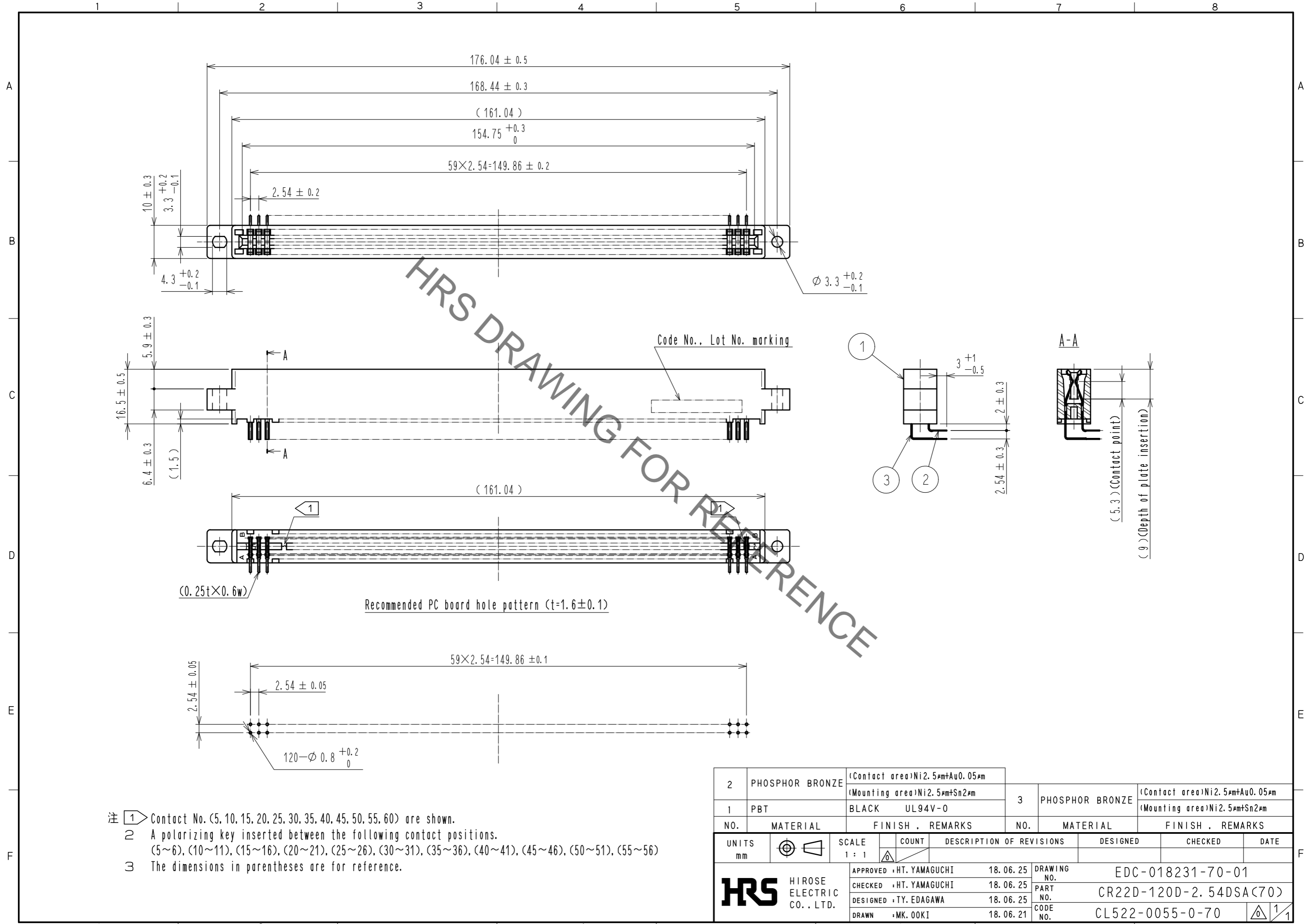


Jul.1.2021 Copyright 2021 HIROSE ELECTRIC CO., LTD. All Rights Reserved.
 In case of consideration for using Automotive equipment / device which demand high reliability, kindly contact our sales window correspondents.



- 注 1 Contact No. (5, 10, 15, 20, 25, 30, 35, 40, 45, 50, 55, 60) are shown.
 2 A polarizing key inserted between the following contact positions.
 (5~6), (10~11), (15~16), (20~21), (25~26), (30~31), (35~36), (40~41), (45~46), (50~51), (55~56)
 3 The dimensions in parentheses are for reference.

2	PHOSPHOR BRONZE	(Contact area)Ni2.5µm+Au0.05µm (Mounting area)Ni2.5µm+Sn2µm	3	PHOSPHOR BRONZE	(Contact area)Ni2.5µm+Au0.05µm (Mounting area)Ni2.5µm+Sn2µm
1	PBT	BLACK UL94V-0			
NO.	MATERIAL	FINISH . REMARKS	NO.	MATERIAL	FINISH . REMARKS
UNITS mm		SCALE 1 : 1	COUNT	DESCRIPTION OF REVISIONS	
DESIGNED		CHECKED		DATE	
APPROVED : HT. YAMAGUCHI		18.06.25		DRAWING NO. EDC-018231-70-01	
CHECKED : HT. YAMAGUCHI		18.06.25		PART NO. CR22D-120D-2.54DSA(70)	
DESIGNED : TY. EDAGAWA		18.06.25		CODE NO. CL522-0055-0-70	
DRAWN : MK. OOKI		18.06.21		1/1	

X-ON Electronics

Largest Supplier of Electrical and Electronic Components

Click to view similar products for [Standard Card Edge Connectors](#) category:

Click to view products by [Hirose](#) manufacturer:

Other Similar products are found below :

[CR7E-30DB-3.96E\(72\)](#) [6565204-6](#) [PKC-156](#) [1437274-4](#) [147889-1](#) [1489165-4](#) [EBT15622B2X](#) [1-582587-1](#) [284-0102-12100](#)
[306022901000000](#) [307-012-502-202](#) [307-056-520-300](#) [245-062-520-350](#) [287-0032-12101](#) [306-028-525-102](#) [307-072-526-202](#) [345-060-559-](#)
[303](#) [392-008-559-201](#) [534671-1](#) [341-240-317](#) [345-044-500-300](#) [346-240-318](#) [395-100-524-300](#) [09-07-2032](#) [10035388-802LF](#) [10122859-](#)
[009LF](#) [10127905-B04B24BLF](#) [530555-1](#) [5-678046-1](#) [73726-0005](#) [66308-1](#) [1-1437275-6](#) [PEC-07-02-T-S-A](#) [346-014-520-801](#) [307-048-502-](#)
[202](#) [CE100F22-9-C](#) [CE100F26-7-C](#) [CE100F28-3-D](#) [CE156F18-9-C](#) [CE156F22-5-D](#) [CE156F22-9-C](#) [CT100F22-2-D](#) [CT100F22-3-D](#)
[CT100F24-2-D](#) [CT100F24-3-D](#) [CT100F24-6-C](#) [CT156F22-4-D](#) [MLSS100-12-C](#) [MLSS100-16-C](#) [SCC100F-11-C](#)