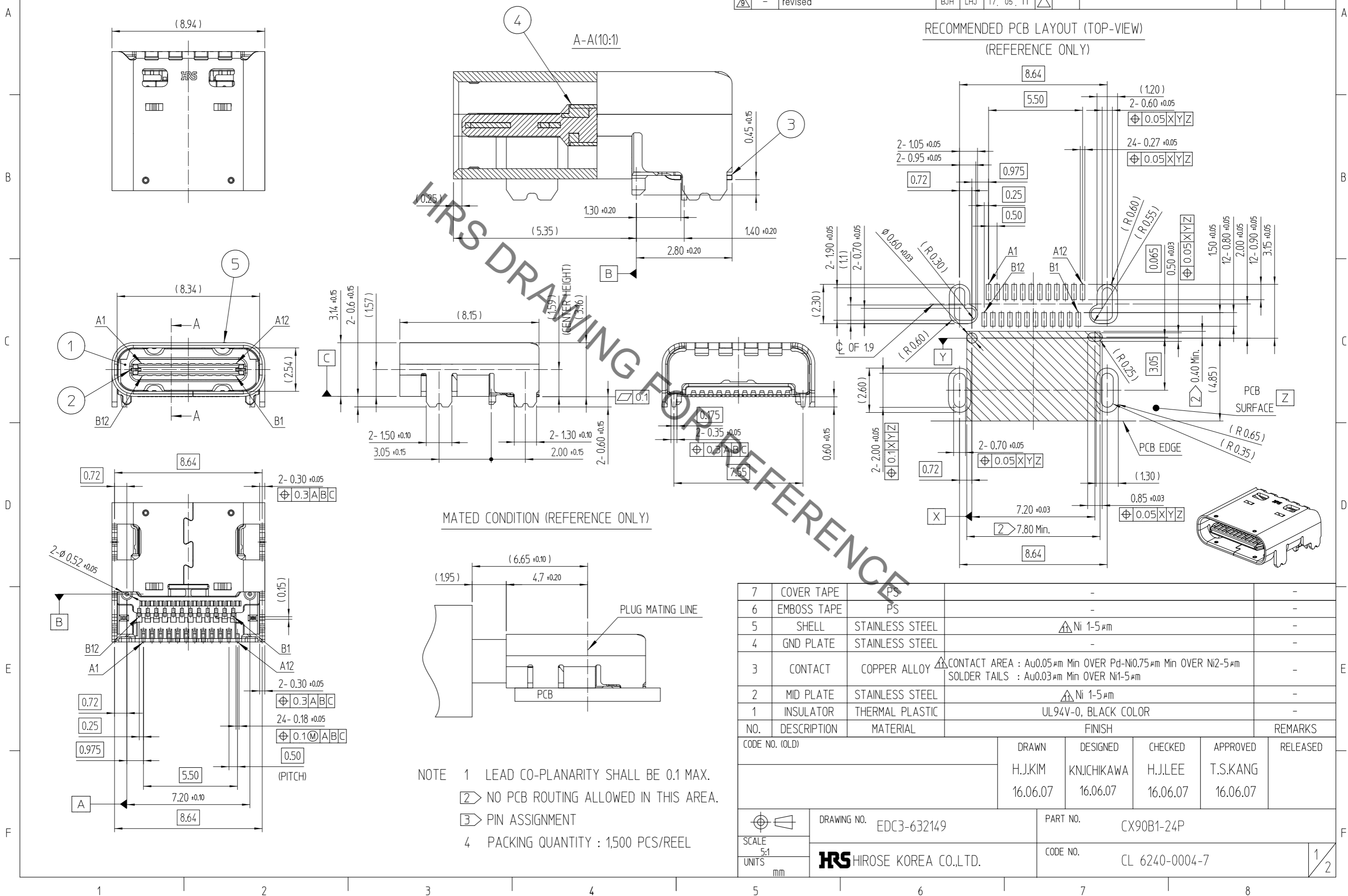


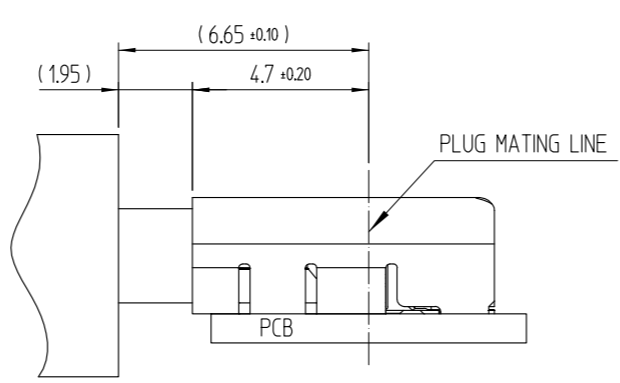
Jul.1.2021 Copyright 2021 HIROSE ELECTRIC CO., LTD. All Rights Reserved.
In case of consideration for using Automotive equipment / device which demand high reliability, kindly contact our sales window correspondents.

| △數 COUNT | 訂正事項 DESCRIPTION OF REVISIONS | 擔當 B | 檢圖 CHKD | 年月日 DATE | △數 COUNT | 訂正事項 DESCRIPTION OF REVISIONS | 擔當 B | 檢圖 CHKD | 年月日 DATE |
|-------------|----------------------------------|---------|------------|-------------|-------------|----------------------------------|---------|------------|-------------|
| △7 | - revised | BJH | KHJ | 17. 03. 30 | △8 | - revised | BJH | LHJ | 17. 05. 24 |
| △8 | - revised | BJH | KHJ | 17. 04. 05 | △9 | 3 revised | KHJ | LHJ | 18. 01. 30 |
| △9 | - revised | BJH | LHJ | 17. 05. 11 | △ | | | | |

RECOMMENDED PCB LAYOUT (TOP-VIEW)
(REFERENCE ONLY)



MATED CONDITION (REFERENCE ONLY)



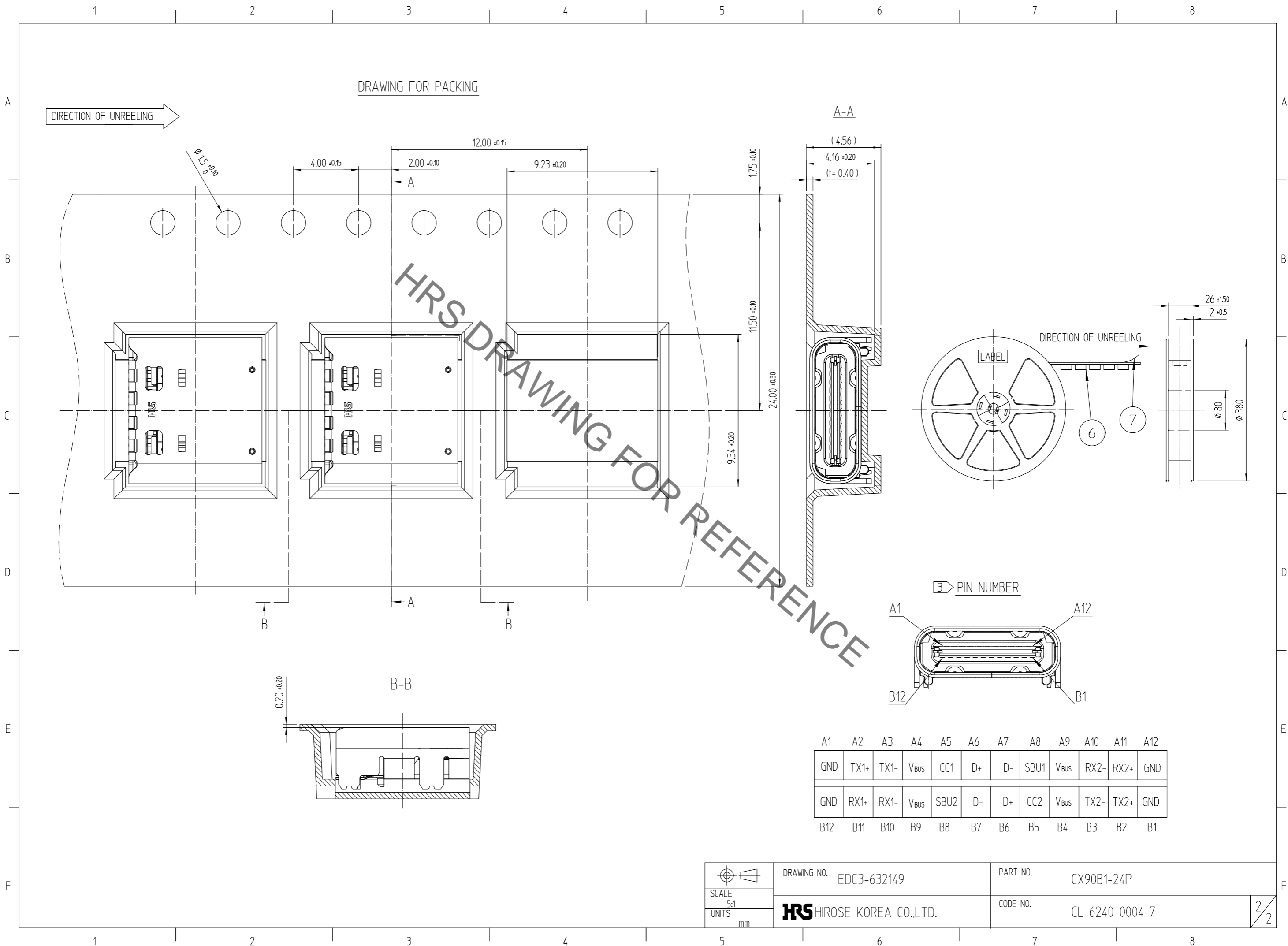
- NOTE
- 1 LEAD CO-PLANARITY SHALL BE 0.1 MAX.
 - 2 NO PCB ROUTING ALLOWED IN THIS AREA.
 - 3 PIN ASSIGNMENT
 - 4 PACKING QUANTITY : 1,500 PCS/REEL

| NO. | DESCRIPTION | MATERIAL | FINISH | REMARKS |
|-----|-------------|-----------------|--|---------|
| 7 | COVER TAPE | PS | - | - |
| 6 | EMBOSS TAPE | PS | - | - |
| 5 | SHELL | STAINLESS STEEL | △ Ni 1-5 μm | - |
| 4 | GND PLATE | STAINLESS STEEL | - | - |
| 3 | CONTACT | COPPER ALLOY | △ CONTACT AREA : Au0.05 μm Min OVER Pd-Ni0.75 μm Min OVER Ni2-5 μm SOLDER TAILS : Au0.03 μm Min OVER Ni1-5 μm | - |
| 2 | MID PLATE | STAINLESS STEEL | △ Ni 1-5 μm | - |
| 1 | INSULATOR | THERMAL PLASTIC | UL94V-0, BLACK COLOR | - |

| CODE NO. (OLD) | DRAWN | DESIGNED | CHECKED | APPROVED | RELEASED |
|----------------|----------|-------------|----------|----------|----------|
| | H.J.KIM | KNJICHIKAWA | H.J.LEE | T.S.KANG | |
| | 16.06.07 | 16.06.07 | 16.06.07 | 16.06.07 | |

| DRAWING NO. | PART NO. | CODE NO. | SCALE | UNITS |
|-------------|------------|----------------|-------|-------|
| EDC3-632149 | CX90B1-24P | CL 6240-0004-7 | 5:1 | mm |

Jul.1.2021 Copyright 2021 HIROSE ELECTRIC CO., LTD. All Rights Reserved.
 In case of consideration for using Automotive equipment / device which demand high reliability, kindly contact our sales window correspondents.



| | | |
|-----------|----------------------------------|-------------------------|
| | DRAWING NO. EDC3-632149 | PART NO. CX90B1-24P |
| SCALE 5:1 | HRS HIROSE KOREA CO.,LTD. | CODE NO. CL 6240-0004-7 |
| UNITS mm | | 2/2 |

X-ON Electronics

Largest Supplier of Electrical and Electronic Components

Click to view similar products for [USB Connectors](#) category:

Click to view products by [Hirose](#) manufacturer:

Other Similar products are found below :

[65-647-8-BK-BU](#) [950](#) [E8144-B01021-L](#) [A-USB A-LP-SMT-C](#) [A-USB B-TOP-C](#) [MUSBA511N5](#) [MUSBD11135](#) [217450-1](#) [CA 6 W LD](#)
[KMBVX-TH-5S-B30](#) [896-30-004-00-000000](#) [KUSBVX-BS1N-W30](#) [KUSBX-AP-KIT-SCBLK](#) [KUSBX-AS2N-W](#) [KUSBX-SMT2AP1S-W](#)
[KUSBX-SMT2AP1S-W30](#) [935](#) [957](#) [30-498-6](#) [17-210051](#) [1734082-1](#) [30-1574](#) [30-470](#) [30-489](#) [30-541](#) [30-572-3](#) [MAB 8 SN V](#) [A-USB A-](#)
[2P-C](#) [MIKROE-1451](#) [USBFTV2PEM2G](#) [USBFTVC6ZN](#) [KUSBX-AS2N-W30](#) [KUSBX-SLAS1N-W](#) [KUSBX-SMT-AS1N-W30](#) [4689-1](#) [1-](#)
[1734084-2](#) [E8110-001-01](#) [MUSBA81130](#) [33UBARS1-04SW11](#) [33UBAR-04SW11](#) [USBF21ZNSCC](#) [USBBFTV6ZC](#) [10135326-001LF](#)
[M9177/3-1](#) [USB-A-S-F-B-VT](#) [925](#) [4198](#) [690-024-633-031](#) [KUSBEX-BSFS1N-W](#) [USBFTVC6MRG](#)