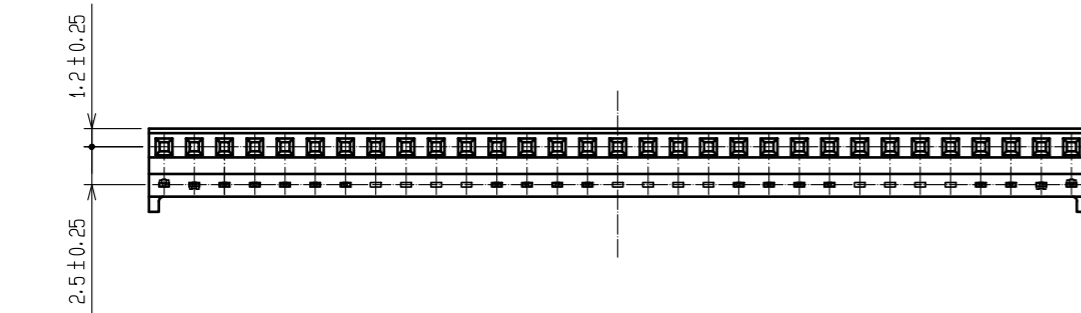
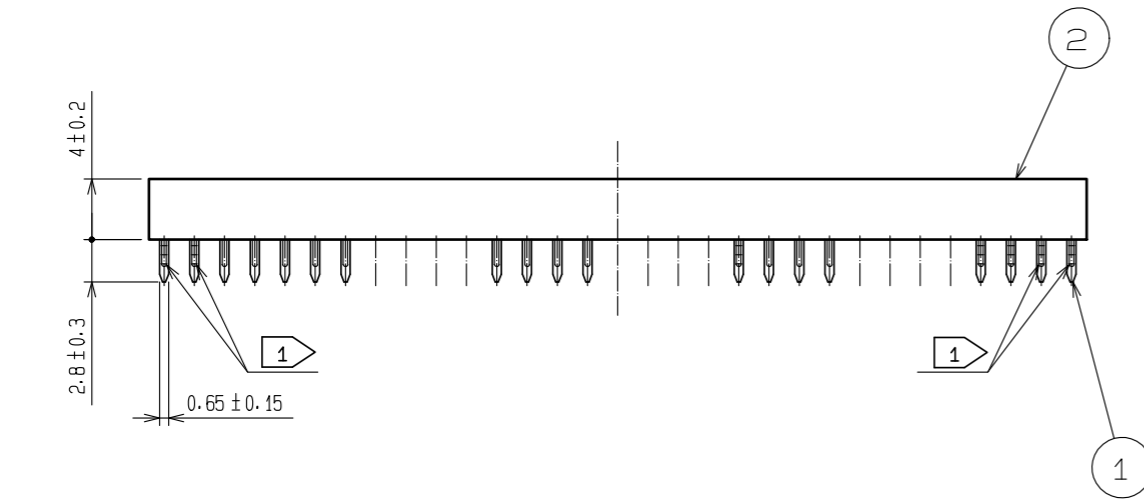
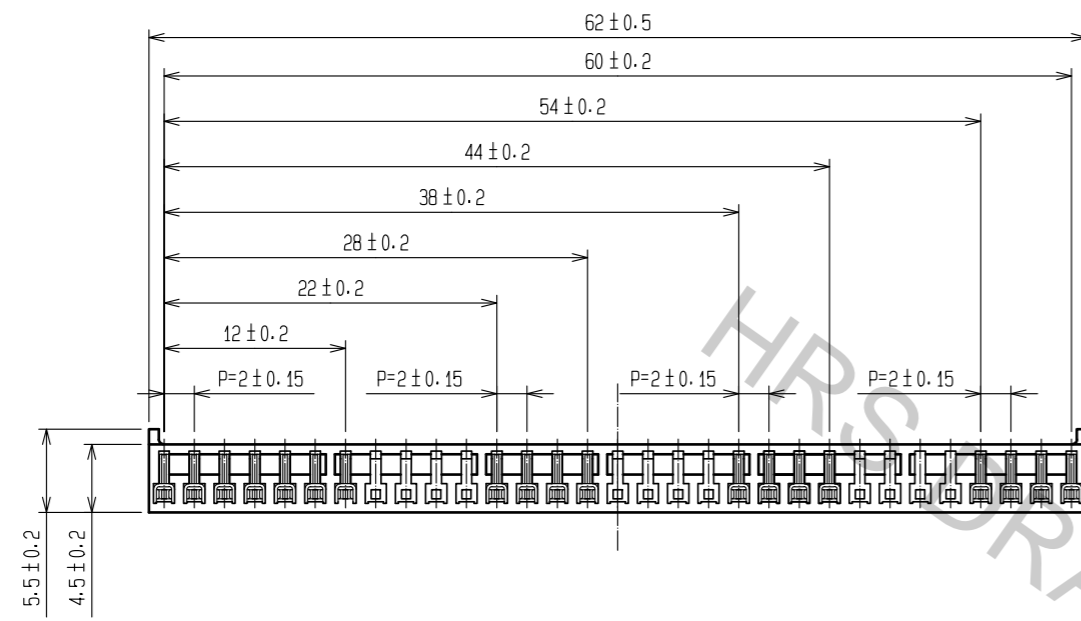
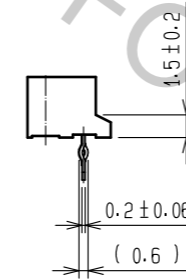
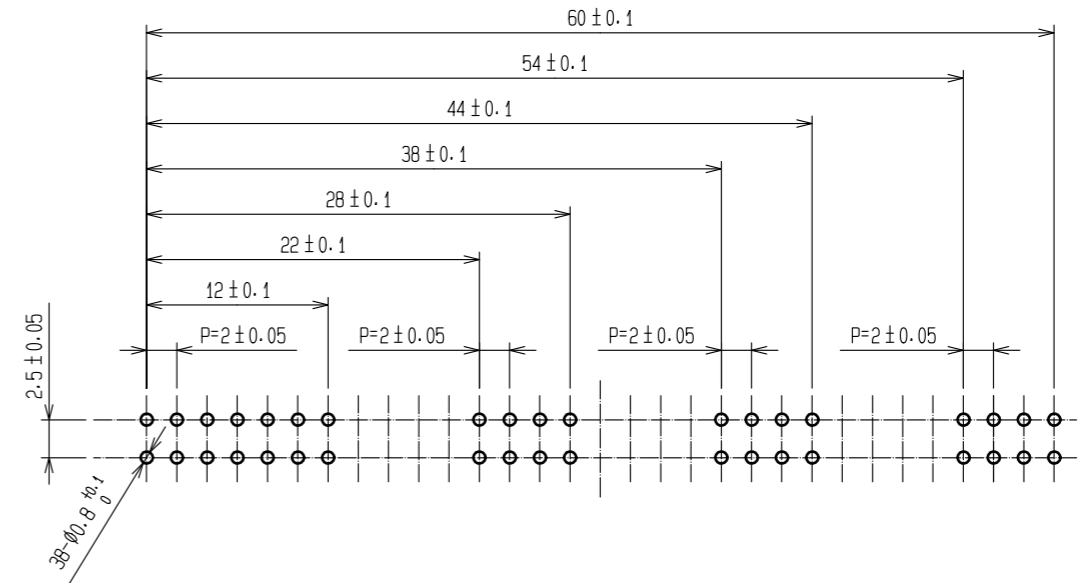


Dec.1.2018 Copyright 2018 HIROSE ELECTRIC CO., LTD. All Rights Reserved.
 In case that the application demands a high level of reliability, such as automotive,
 please contact a company representative for further information.



RECOMMENDED PC BOARD
HOLE PATTERN



- NOTES
- 1 KINK SHOULD BE GIVEN ON 2 BOTH EDGE SIDE PINS ALTERNATELY.
 - 2 CONTACT AREA: GOLD PLATED (0.1μm min)
 LEAD AREA: TIN PLATED (REFLOW FINISHED) 1μm min
 UNDER PLATING: NICKEL 0.5μm min

1	PHOSPHOR BRONZE	2	POLYAMIDE	BLACK, UL94V-0				
NO.	MATERIAL	FINISH, REMARKS	NO.	MATERIAL	FINISH, REMARKS			
TOLERANCES SEE TABLE FOR SPECIFIED, UNLESS OTHERWISE		UNITS mm	COUNT	DESCRIPTION OF REVISIONS		DESIGNED	CHECKED	DATE
OVER	TO	TOLERANCE	SCALE ? : 1					
6	18	± 0.3	ANGULAR $\pm 1^\circ$	APPROVED	:WR. FUKUCHI	17.12.01	DRAWING NO. EDC-071907-78-00	
18	50	± 0.5	HRS HIROSE ELECTRIC CO., LTD.	CHECKED	:TS. MIYAZAKI	17.12.01	PART NO. DF10-31S-2DSA(78)	
50	125	± 1		DESIGNED	:SH. HOSODA	17.12.01	CODE NO. CL545-0022-5-78	
				DRAWN	:KT. KUSAKA	17.12.01		
ASSEMBLY DRAWING								

X-ON Electronics

Largest Supplier of Electrical and Electronic Components

Click to view similar products for [Board to Board & Mezzanine Connectors](#) category:

Click to view products by [Hirose](#) manufacturer:

Other Similar products are found below :

[589158040000018](#) [MDF7C-18P-2.54DSA\(55\)](#) [FCN-230C068-11](#) [FCN-268F012-G/BD](#) [FCN-268F036-G/BD](#) [FCN-268M012-G/0D](#) [FCN-268M024-G/1D](#) [FCN-723J004/1](#) [MIS-048-01-F-D-DP-K](#) [832-10-034-10-001000](#) [FX4C-80S-1.27DSA](#) [FCN-214Q030-G/0](#) [FCN-234P048-G/0](#) [FCN-235D050-G/C](#) [210-93-314-41-105000](#) [2-22603-0](#) [MDF7-40DP-2.54DSA\(55\)](#) [AXG720047](#) [MIT-114-03-F-D-K](#) [55323-1519](#) [DF33-2P-3.3DSA\(24\)](#) [YFT-20-05-H-03-SB-K](#) [503308-3040](#) [026-6203-PDB](#) [027-6203-PDB](#) [069159702701000](#) [10123981-102LF](#) [101A10019X](#) [55650-0588-C](#) [68682-310LF](#) [68684-306](#) [75140-7012](#) [87471-650](#) [YTW-30-07-H-Q-410-140](#) [FCN-268F024-G0D](#) [10124054-515LF](#) [68685-603](#) [8-1616154-3](#) [MIS-019-01-F-D](#) [FCN-268M024-G/3D](#) [FCN-268M036-G/BD](#) [20021832-06016C1LF](#) [KX15-20KLDL-E1000E](#) [AXE810124](#) [FCN-214J100-G/0](#) [FCN-230C068-E/S](#) [AXE812124](#) [AXE816124](#) [AXE720127](#) [354184](#)