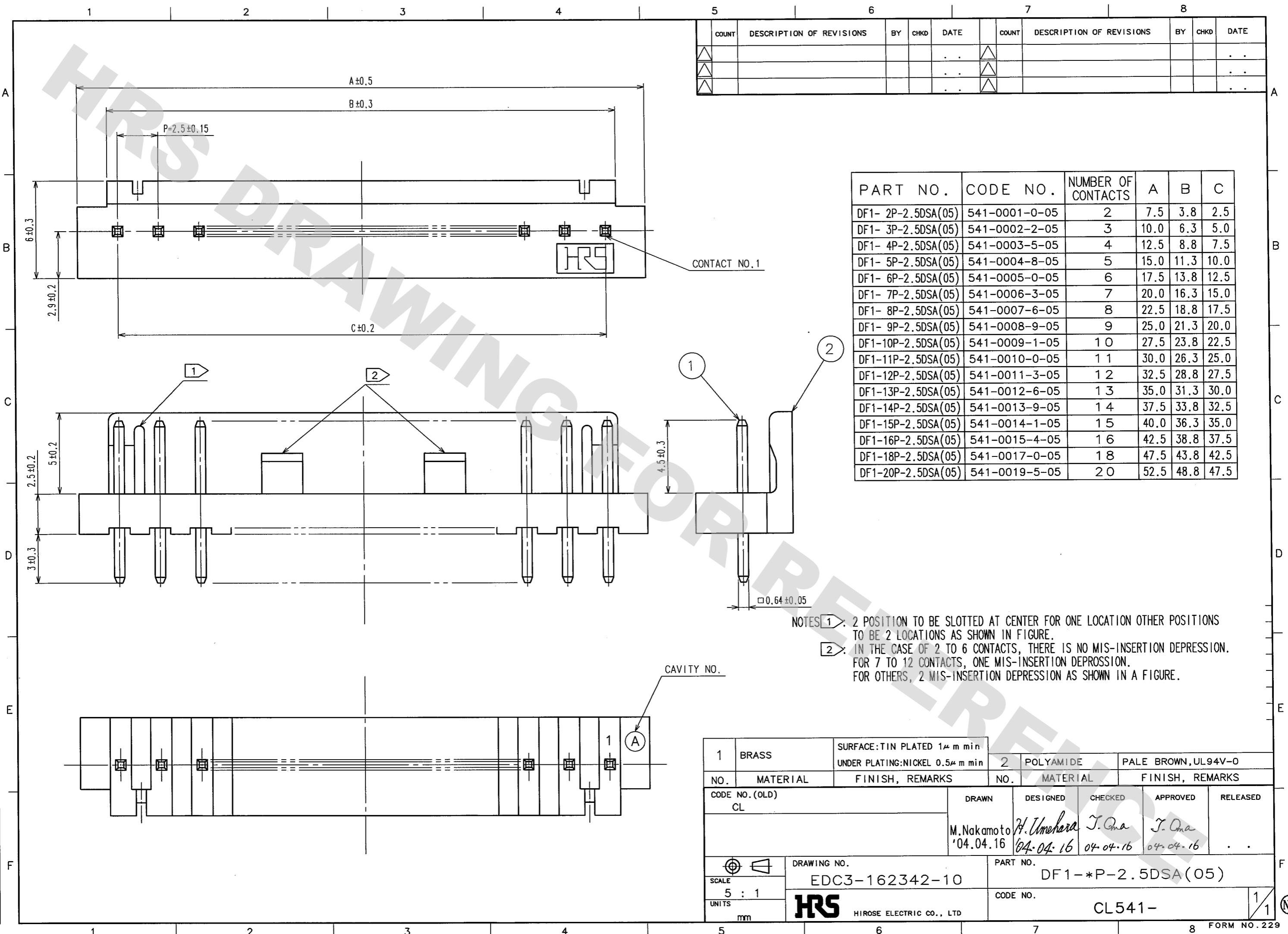


DRAWING FOR REFERENCE: This is subject to change without notice
08/11/2012



COUNT	DESCRIPTION OF REVISIONS	BY	CHKD	DATE	COUNT	DESCRIPTION OF REVISIONS	BY	CHKD	DATE

PART NO.	CODE NO.	NUMBER OF CONTACTS	A	B	C
DF1- 2P-2.5DSA(05)	541-0001-0-05	2	7.5	3.8	2.5
DF1- 3P-2.5DSA(05)	541-0002-2-05	3	10.0	6.3	5.0
DF1- 4P-2.5DSA(05)	541-0003-5-05	4	12.5	8.8	7.5
DF1- 5P-2.5DSA(05)	541-0004-8-05	5	15.0	11.3	10.0
DF1- 6P-2.5DSA(05)	541-0005-0-05	6	17.5	13.8	12.5
DF1- 7P-2.5DSA(05)	541-0006-3-05	7	20.0	16.3	15.0
DF1- 8P-2.5DSA(05)	541-0007-6-05	8	22.5	18.8	17.5
DF1- 9P-2.5DSA(05)	541-0008-9-05	9	25.0	21.3	20.0
DF1-10P-2.5DSA(05)	541-0009-1-05	10	27.5	23.8	22.5
DF1-11P-2.5DSA(05)	541-0010-0-05	11	30.0	26.3	25.0
DF1-12P-2.5DSA(05)	541-0011-3-05	12	32.5	28.8	27.5
DF1-13P-2.5DSA(05)	541-0012-6-05	13	35.0	31.3	30.0
DF1-14P-2.5DSA(05)	541-0013-9-05	14	37.5	33.8	32.5
DF1-15P-2.5DSA(05)	541-0014-1-05	15	40.0	36.3	35.0
DF1-16P-2.5DSA(05)	541-0015-4-05	16	42.5	38.8	37.5
DF1-18P-2.5DSA(05)	541-0017-0-05	18	47.5	43.8	42.5
DF1-20P-2.5DSA(05)	541-0019-5-05	20	52.5	48.8	47.5

NOTES: 1. 2 POSITION TO BE SLOTTED AT CENTER FOR ONE LOCATION OTHER POSITIONS TO BE 2 LOCATIONS AS SHOWN IN FIGURE.
2. IN THE CASE OF 2 TO 6 CONTACTS, THERE IS NO MIS-INSERTION DEPRESSION. FOR 7 TO 12 CONTACTS, ONE MIS-INSERTION DEPRESSION. FOR OTHERS, 2 MIS-INSERTION DEPRESSION AS SHOWN IN A FIGURE.

1	BRASS	SURFACE: TIN PLATED 1μ m min UNDER PLATING: NICKEL 0.5μ m min	2	POLYAMIDE	PALE BROWN, UL94V-0		
NO.	MATERIAL	FINISH, REMARKS	NO.	MATERIAL	FINISH, REMARKS		
CODE NO. (OLD)	CL		DRAWN	DESIGNED	CHECKED	APPROVED	RELEASED
			M. Nakamoto '04.04.16	H. Umehara '04.04.16	J. Ona 04.04.16	J. Ona 04.04.16	
DRAWING NO.		PART NO.					
EDC3-162342-10		DF1-*P-2.5DSA(05)					
SCALE		CODE NO.					
5 : 1		CL541-					
UNITS		HRS					
mm		HIROSE ELECTRIC CO., LTD					

TO

1/1 (NC)

X-ON Electronics

Largest Supplier of Electrical and Electronic Components

Click to view similar products for [Headers & Wire Housings](#) category:

Click to view products by [Hirose](#) manufacturer:

Other Similar products are found below :

[892-18-020-10-001101](#) [58102-G61-06LF](#) [582553-1](#) [0009485154](#) [009176003701906](#) [0050291907](#) [LY20-4P-DT1-P1E-BR](#) [02.125.8002.8](#)
[609-3404](#) [61062-3](#) [622-0430](#) [622-3653LF](#) [63453-116](#) [636-1030](#) [636-1427](#) [636-3427](#) [636-4007](#) [641938-9](#) [641991-4](#) [644827-2](#) [65817-010LF](#)
[65817-015LF](#) [65863-015LF](#) [66207-023LF](#) [67095-007LF](#) [67601157](#) [68648-049](#) [70.362.1628.0](#) [70-4210](#) [70-4226B](#) [70-4853B](#) [707-5020](#) [707-5028](#) [71.350.2428.0](#) [71918-208LF](#) [71961-016LF](#) [733-134](#) [733-162](#) [754199-000](#) [760-3052](#) [787-8014-00](#) [79531-3000](#) [FCN-360C032-B](#) [FCN-367T-T012/H](#) [FCN-723D010/2](#) [80.063.4001.1](#) [800-90-001-10-001000](#) [800-90-010-10-002000](#) [801-43-002-10-013000](#) [801-43-006-10-002000](#)