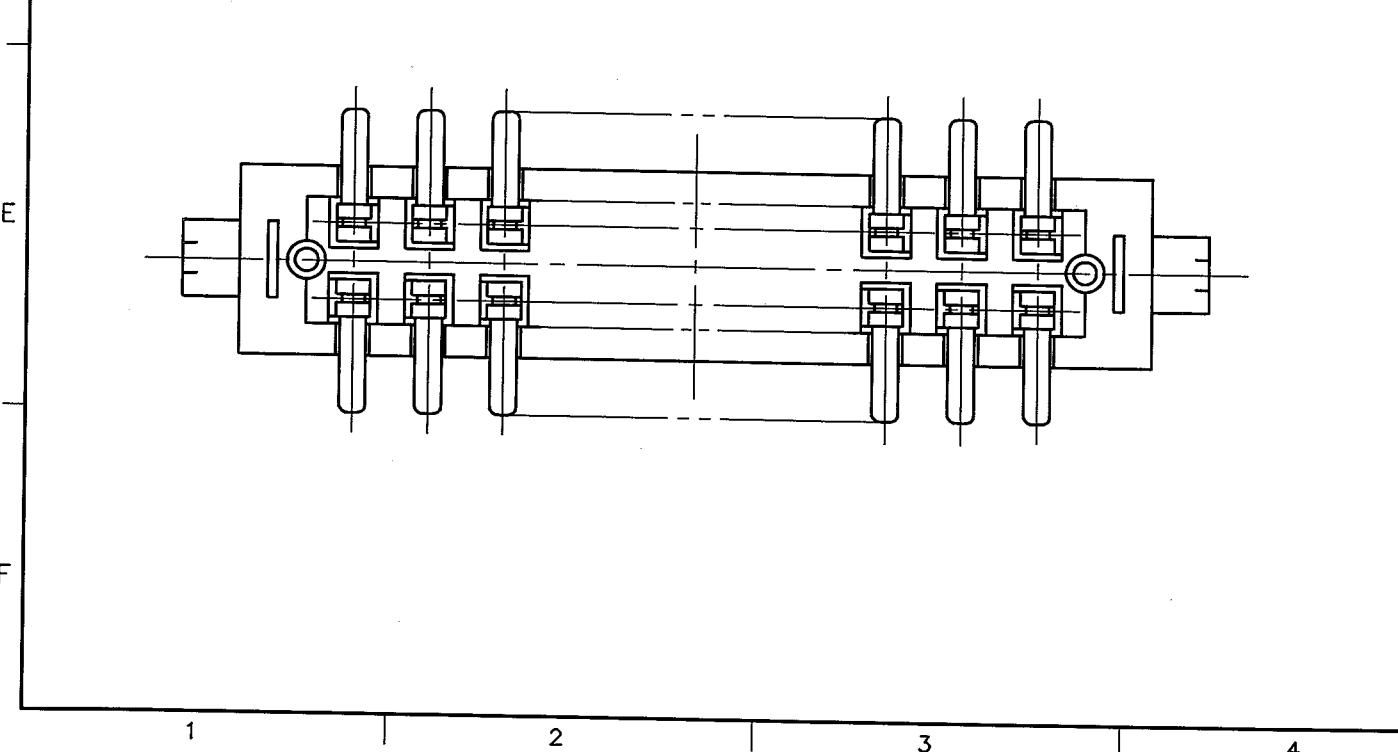
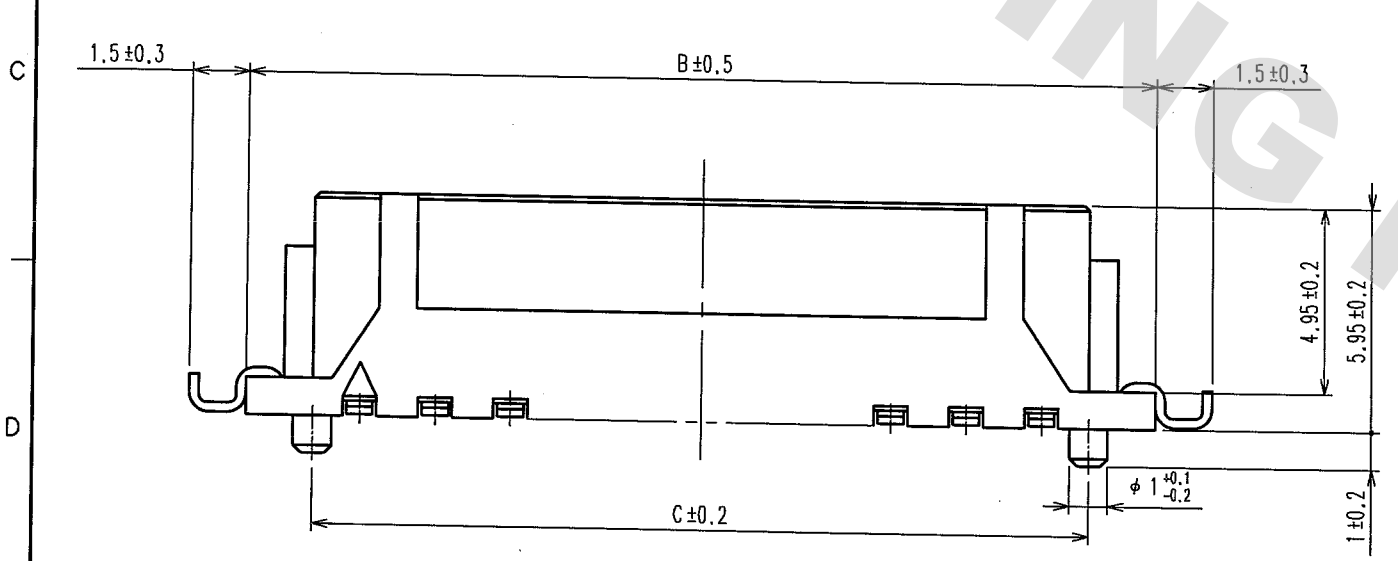
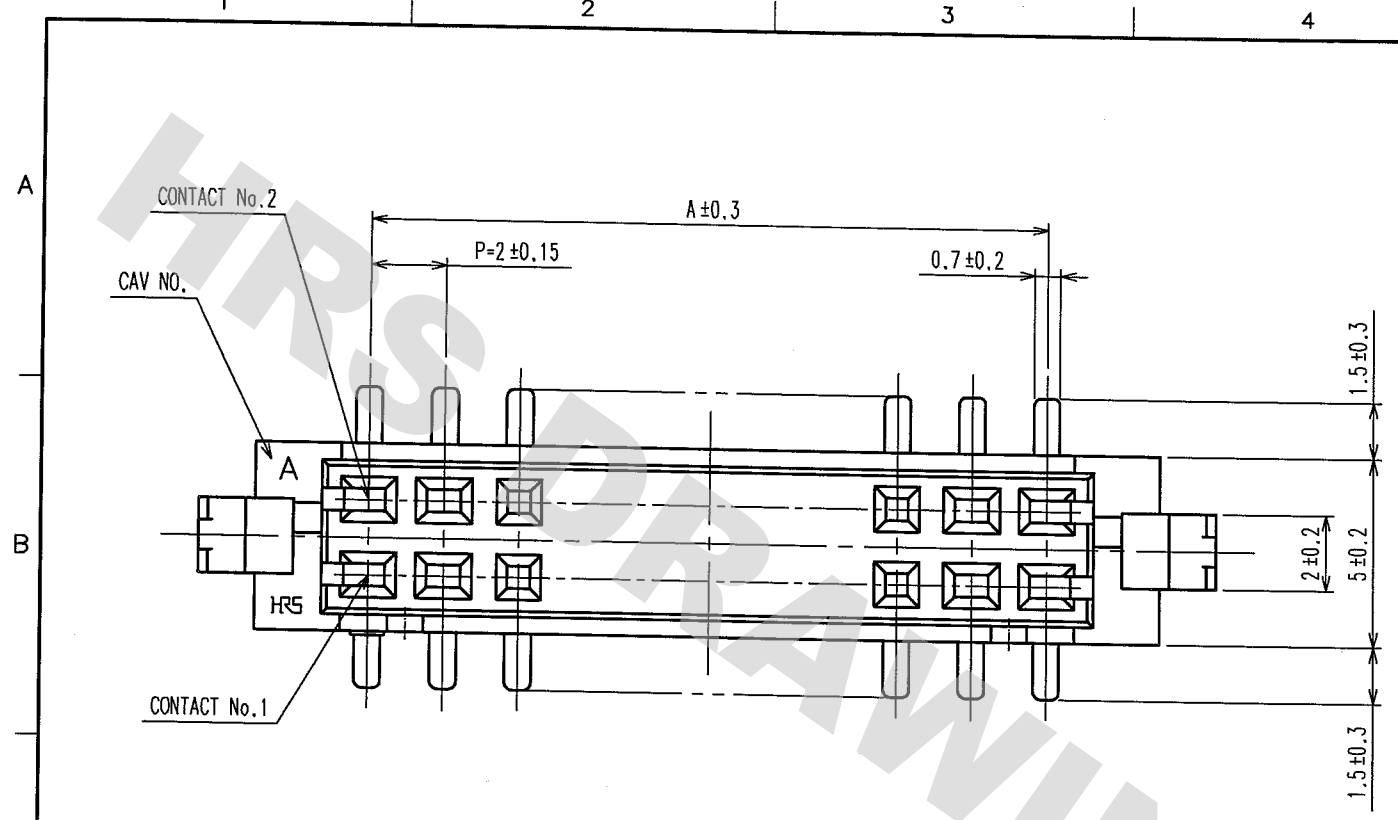
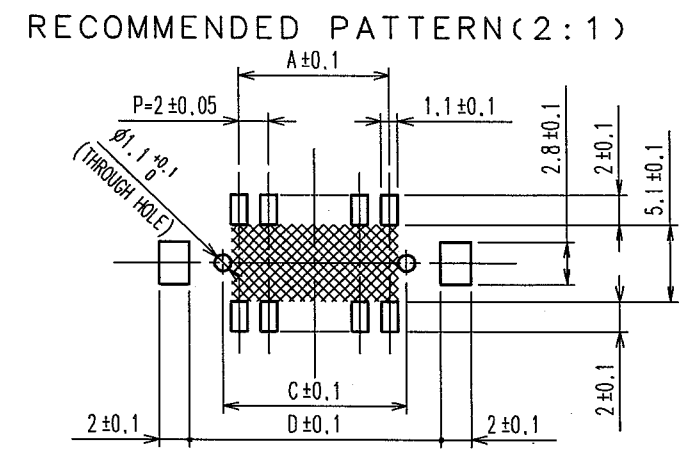
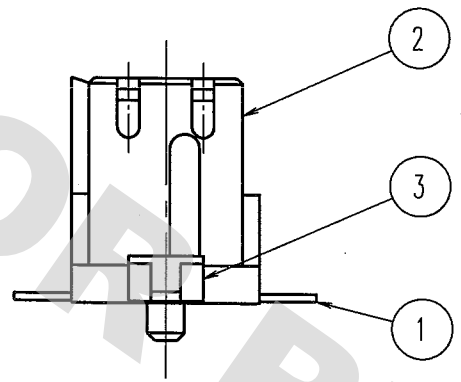


COUNT	DESCRIPTION OF REVISIONS	BY	CHKD	DATE	COUNT	DESCRIPTION OF REVISIONS	BY	CHKD	DATE
1	RE-H-06558	I.D	T.M	04.12.21					



CODE No.	PART No.	NUMBER OF CONTACT	A	B	C	D
CL543-2001-3-50	DF11Z- 4DS-2V(50)	4	2.0	8.5	4.5	8.7
CL543-2002-6-50	DF11Z- 6DS-2V(50)	6	4.0	10.5	6.5	10.7
CL543-2003-9-50	DF11Z- 8DS-2V(50)	8	6.0	12.5	8.5	12.7
CL543-2004-1-50	DF11Z-10DS-2V(50)	10	8.0	14.5	10.5	14.7
CL543-2005-4-50	DF11Z-12DS-2V(50)	12	10.0	16.5	12.5	16.7
CL543-2006-7-50	DF11Z-14DS-2V(50)	14	12.0	18.5	14.5	18.7
CL543-2007-0-50	DF11Z-16DS-2V(50)	16	14.0	20.5	16.5	20.7
CL543-2008-2-50	DF11Z-18DS-2V(50)	18	16.0	22.5	18.5	22.7
CL543-2009-5-50	DF11Z-20DS-2V(50)	20	18.0	24.5	20.5	24.7
CL543-2010-4-50	DF11Z-22DS-2V(50)	22	20.0	26.5	22.5	26.7
CL543-2011-7-50	DF11Z-24DS-2V(50)	24	22.0	28.5	24.5	28.7
CL543-2012-0-50	DF11Z-26DS-2V(50)	26	24.0	30.5	26.5	30.7
CL543-2013-2-50	DF11Z-28DS-2V(50)	28	26.0	32.5	28.5	32.7
CL543-2014-5-50	DF11Z-30DS-2V(50)	30	28.0	34.5	30.5	34.7
CL543-2015-8-50	DF11Z-32DS-2V(50)	32	30.0	36.5	32.5	36.7
CL543-2016-0-50	DF11Z-40DS-2V(50)	40	38.0	44.5	40.5	44.7



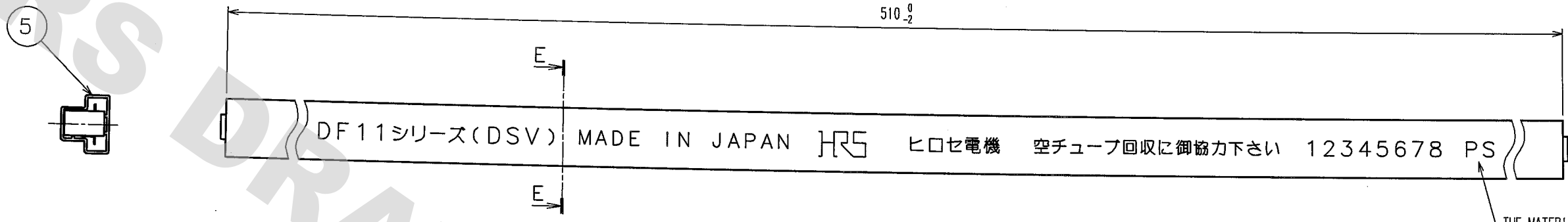
NOTES 1: IF THERE IS PATTERN ON [Hatched Area] PART, THERE IS A POSSIBILITY THAT IT WILL MAKE CONTACT WITH THE LEADS.  
 2: LEAD CO-PLANARITY INCLUDE REINFORCED METAL FITTINGS SHALL BE 0.1mm MAX.

2	POLYAMIDE	UL94V-0, NATURAL (BEIGE)	5	ELASTOMER	STOPPER, GRAY		
1	PHOSPHOR BRONZE	CONTACT AREA: GOLD PLATED 0.2μ m min	4	PS	ELECTROSTATIC PROTECTION, CLEAR		
		LEAD AREA: TIN PLATED 2μ m min	3	BRASS	TIN PLATED 1μ m min		
		UNDER PLATING: NICKEL PLATED 1μ m min					
NO.	MATERIAL	FINISH, REMARKS	NO.	MATERIAL	FINISH, REMARKS		
CODE NO. (OLD)			DRAWN	DESIGNED	CHECKED	APPROVED	RELEASED
			F.Matsuki	I.Denpouya	H.Umehara	T.Oma	
			'04.03.31	'04.04.01	'04.04.01	'04.04.02	
DRAWING NO.			PART NO.		CODE NO.		
EDC3-306129-03			DF11Z-*DS-2V(50)		CL543-		1/2
SCALE			UNITS		HRS		
5 : 1			mm		HIROSE ELECTRIC CO., LTD		

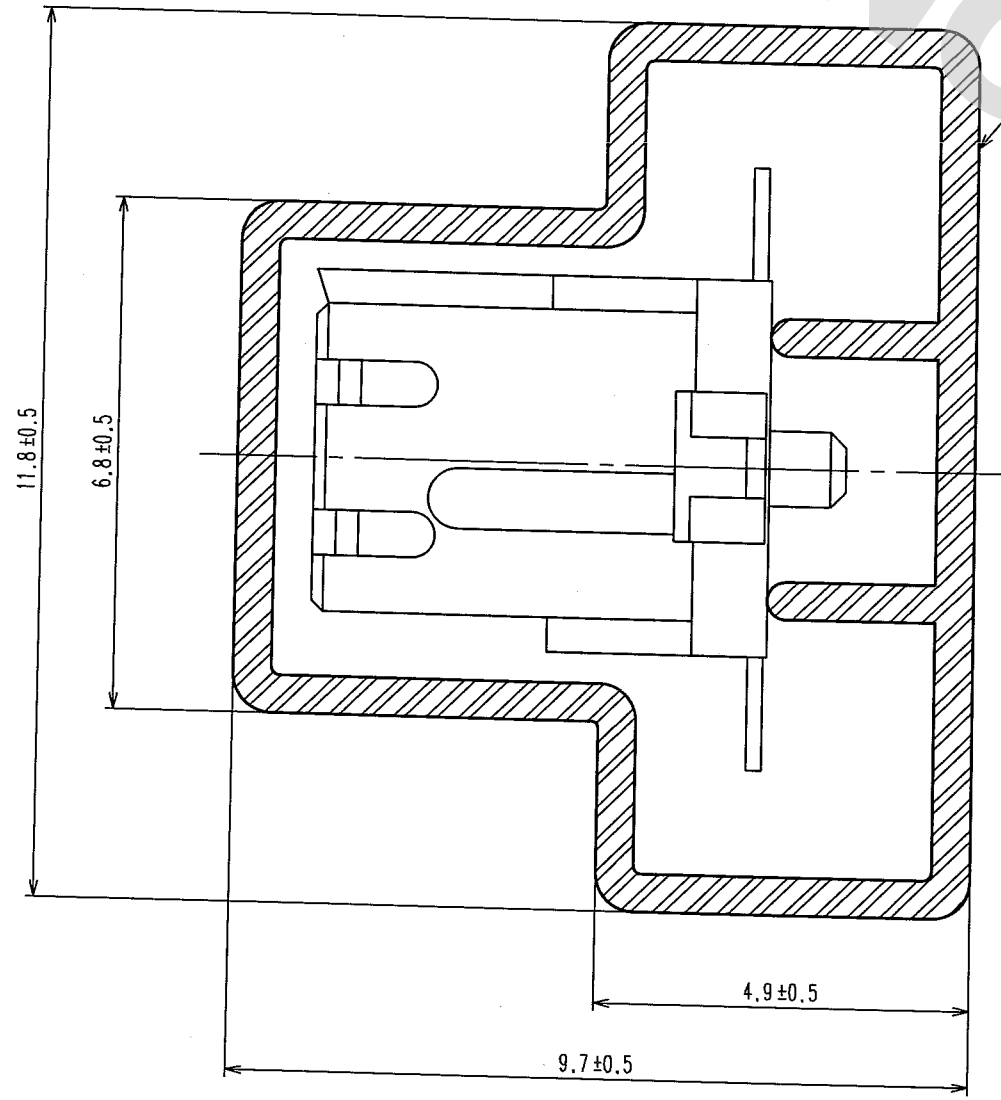
DRAWING FOR REFERENCE: This is subject to change without notice  
08/11/2012

TO

COUNT	DESCRIPTION OF REVISIONS	BY	CHKD	DATE	COUNT	DESCRIPTION OF REVISIONS	BY	CHKD	DATE



E-E(10:1)



NOTES 3 : NUMBER OF CONNECTORS PER A MAGAZINE CASE SHALL BE IN ACCORDANCE WITH THE LIST BELOW.  
 4 : THESE CONNECTORS SHALL BE ON SALED IN ACCORDANCE WITH THE MULTIPLE QUANTITY ON THE LIST.

CODE No.	PART No.	QUANTITY OF CONNECTOR
CL543-2001-3-50	DF11Z- 4DS-2V(50)	4 1
CL543-2002-6-50	DF11Z- 6DS-2V(50)	3 5
CL543-2003-9-50	DF11Z- 8DS-2V(50)	3 0
CL543-2004-1-50	DF11Z-10DS-2V(50)	2 7
CL543-2005-4-50	DF11Z-12DS-2V(50)	2 4
CL543-2006-7-50	DF11Z-14DS-2V(50)	2 2
CL543-2007-0-50	DF11Z-16DS-2V(50)	2 0
CL543-2008-2-50	DF11Z-18DS-2V(50)	1 8
CL543-2009-5-50	DF11Z-20DS-2V(50)	1 7
CL543-2010-4-50	DF11Z-22DS-2V(50)	1 6
CL543-2011-7-50	DF11Z-24DS-2V(50)	1 5
CL543-2012-0-50	DF11Z-26DS-2V(50)	1 4
CL543-2013-2-50	DF11Z-28DS-2V(50)	1 3
CL543-2014-5-50	DF11Z-30DS-2V(50)	1 2
CL543-2015-8-50	DF11Z-32DS-2V(50)	1 2
CL543-2016-0-50	DF11Z-40DS-2V(50)	1 0

CODE NO. (OLD)	DRAWN	DESIGNED	CHECKED	APPROVED	RELEASED
	F.Matsuki	I.Denpouya	H.Umehara	T.Oma	
	'04.03.31	'04.04.01	'04.04.01	'04.04.02	
SCALE	DRAWING NO.	PART NO.	CODE NO.		
FREE	EDC3-306129-03	DF11Z-*DS-2V(50)	CL543-		
UNITS	HRS HIROSE ELECTRIC CO., LTD				2
mm					

DRAWING FOR REFERENCE: This is subject to change without notice  
08/11/2012

TO

## X-ON Electronics

Largest Supplier of Electrical and Electronic Components

*Click to view similar products for [Headers & Wire Housings](#) category:*

*Click to view products by [Hirose](#) manufacturer:*

Other Similar products are found below :

[892-18-020-10-001101](#) [58102-G61-06LF](#) [582553-1](#) [0009485154](#) [009176003701906](#) [0050291907](#) [LY20-4P-DT1-P1E-BR](#) [02.125.8002.8](#)  
[609-3404](#) [61062-3](#) [622-0430](#) [622-3653LF](#) [63453-116](#) [636-1030](#) [636-1427](#) [636-3427](#) [636-4007](#) [641938-9](#) [641991-4](#) [644827-2](#) [65817-010LF](#)  
[65817-015LF](#) [65863-015LF](#) [66207-023LF](#) [67095-007LF](#) [67601157](#) [68648-049](#) [70.362.1628.0](#) [70-4210](#) [70-4226B](#) [70-4853B](#) [707-5020](#) [707-5028](#) [71.350.2428.0](#) [71918-208LF](#) [71961-016LF](#) [733-134](#) [733-162](#) [754199-000](#) [760-3052](#) [787-8014-00](#) [79531-3000](#) [FCN-360C032-B](#) [FCN-367T-T012/H](#) [FCN-723D010/2](#) [80.063.4001.1](#) [800-90-001-10-001000](#) [800-90-010-10-002000](#) [801-43-002-10-013000](#) [801-43-006-10-002000](#)