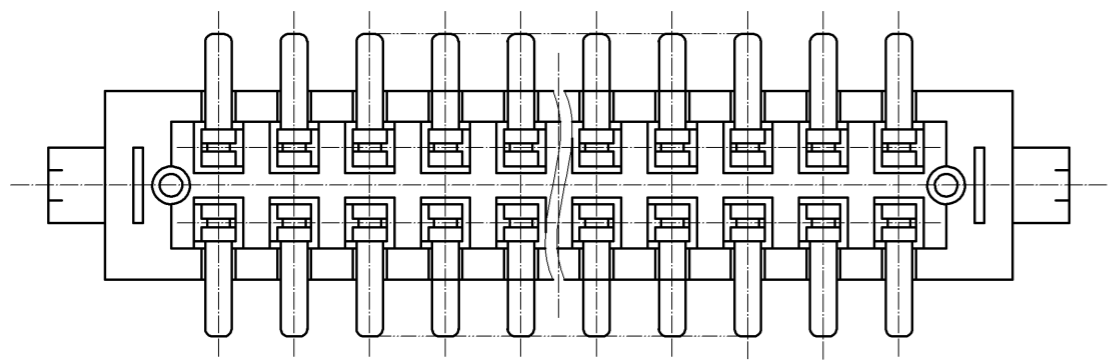
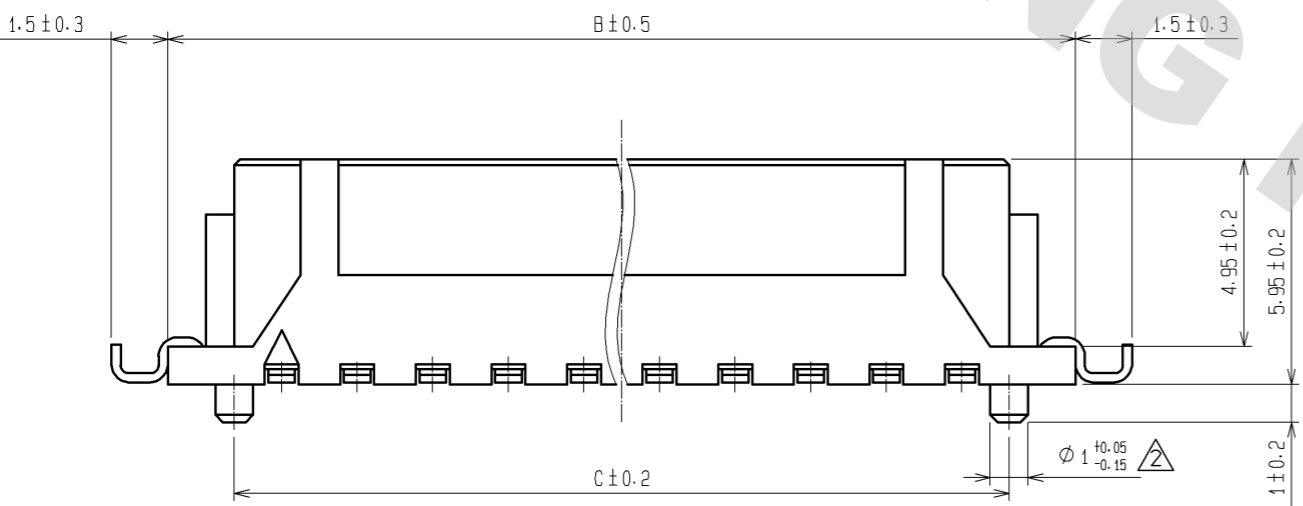
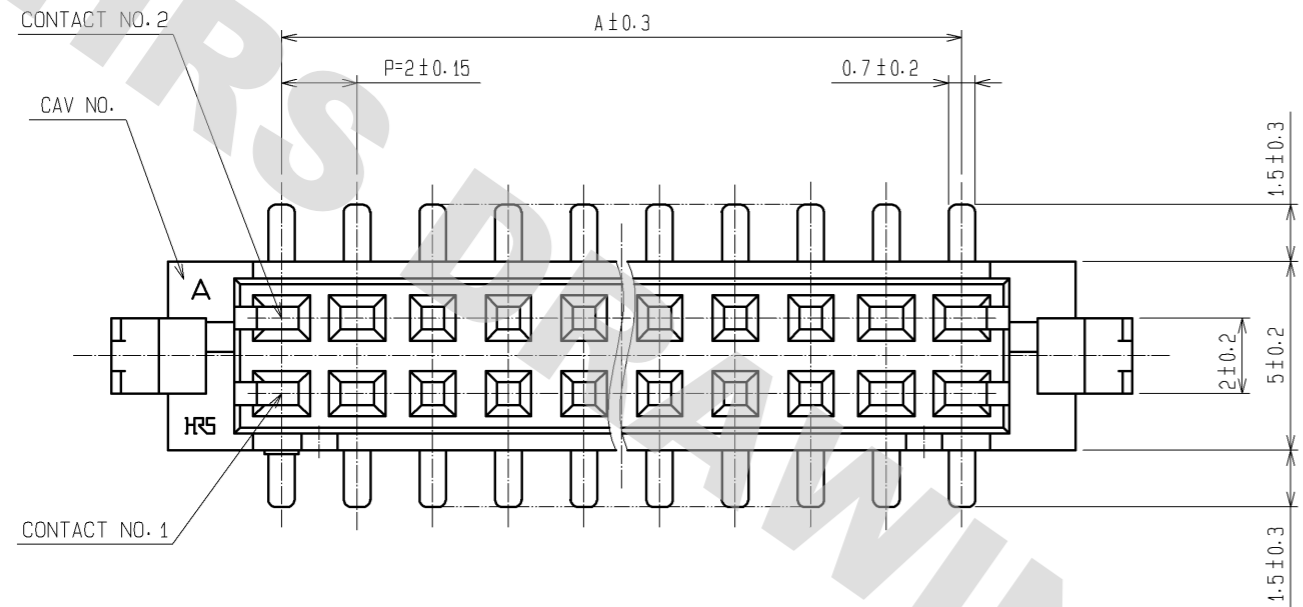
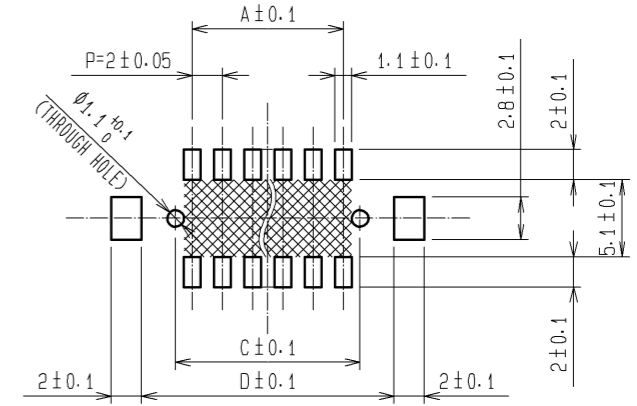
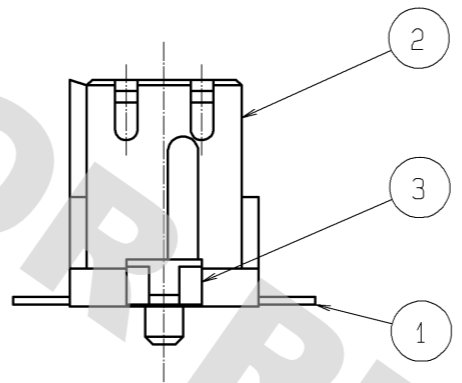


DRAWING FOR REFERENCE: This is subject to change without notice
08/11/2012



CODE No.	PART No.	NUMBER OF CONTACT	A	B	C	D
CL543-2001-3-20	DF11Z- 4DS-2V(20)	4	2.0	8.5	4.5	8.7
CL543-2002-6-20	DF11Z- 6DS-2V(20)	6	4.0	10.5	6.5	10.7
CL543-2003-9-20	DF11Z- 8DS-2V(20)	8	6.0	12.5	8.5	12.7
CL543-2004-1-20	DF11Z-10DS-2V(20)	10	8.0	14.5	10.5	14.7
CL543-2005-4-20	DF11Z-12DS-2V(20)	12	10.0	16.5	12.5	16.7
CL543-2006-7-20	DF11Z-14DS-2V(20)	14	12.0	18.5	14.5	18.7
CL543-2007-0-20	DF11Z-16DS-2V(20)	16	14.0	20.5	16.5	20.7
CL543-2008-2-20	DF11Z-18DS-2V(20)	18	16.0	22.5	18.5	22.7
CL543-2009-5-20	DF11Z-20DS-2V(20)	20	18.0	24.5	20.5	24.7
CL543-2010-4-20	DF11Z-22DS-2V(20)	22	20.0	26.5	22.5	26.7
CL543-2011-7-20	DF11Z-24DS-2V(20)	24	22.0	28.5	24.5	28.7
CL543-2012-0-20	DF11Z-26DS-2V(20)	26	24.0	30.5	26.5	30.7
CL543-2013-2-20	DF11Z-28DS-2V(20)	28	26.0	32.5	28.5	32.7
CL543-2014-5-20	DF11Z-30DS-2V(20)	30	28.0	34.5	30.5	34.7
CL543-2015-8-20	DF11Z-32DS-2V(20)	32	30.0	36.5	32.5	36.7
CL543-2016-0-20	DF11Z-40DS-2V(20)	40	38.0	44.5	40.5	44.7

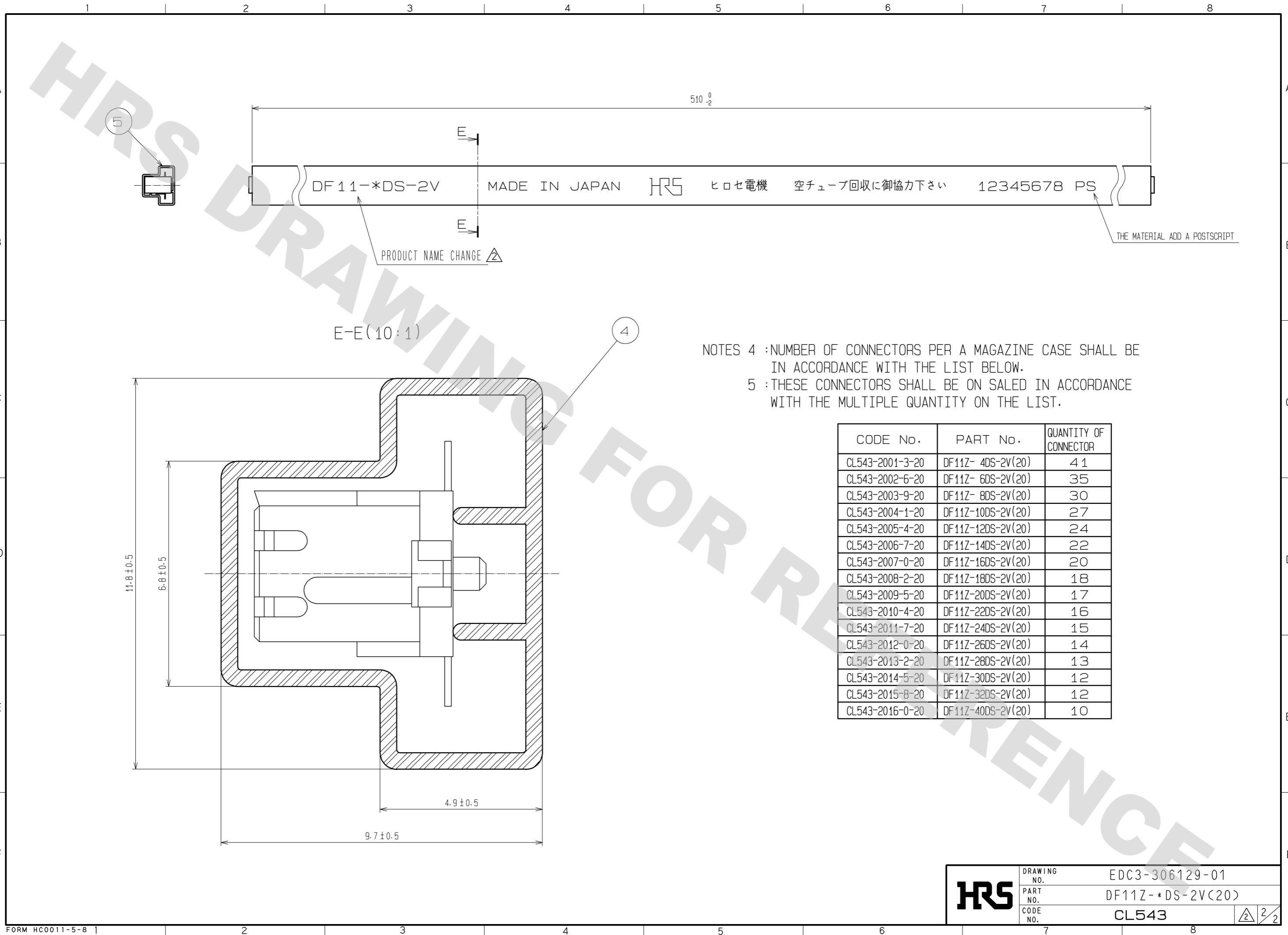
△ 1 RECOMMENDED PATTERN (2:1)
PCB THICKNESS: 1.6mm



- NOTES 1: IF THERE IS PATTERN ON PART, THERE IS A POSSIBILITY THAT IT WILL MAKE CONTACT WITH THE LEADS.
- 2: LEAD CO-PLANARITY INCLUDE REINFORCED METAL FITTINGS SHALL BE 0.1mm MAX.
- △ 3: METAL MASK THICKNESS: 0.15~0.2mm
OPENING RATIO: 100%

2	POLYAMIDE	UL94V-0, NATURAL (BEIGE)	5	ELASTOMER	STOPPER, GRAY
1	PHOSPHOR BRONZE	TIN PLATED 2#m min	4	PS	ELECTROSTATIC PROTECTION, CLEAR
			3	BRASS	TIN PLATED 1#m min
NO.	MATERIAL	FINISH, REMARKS	NO.	MATERIAL	FINISH, REMARKS
UNITS		SCALE	COUNT	DESCRIPTION OF REVISIONS	
mm		5:1	4	DESIGNED	CHECKED
				KT. ISHII	TS. KUMAZAWA
				DATE	09.01.23
				APPROVED: KJ. KATAYOSE	05.01.05
				CHECKED: TY. OMA	05.01.05
				DESIGNED: IO. DENPOUYA	05.01.05
				DRAWN: IO. DENPOUYA	05.01.05
HIROSE ELECTRIC CO., LTD.			DRAWING NO.		EDC3-306129-01
			PART NO.		DF11Z-*DS-2V(20)
			CODE NO.		CL543

DRAWING FOR REFERENCE: This is subject to change without notice
08/11/2012



DF 11-*DS-2V

MADE IN JAPAN

HRS

ヒロセ電機

空チューブ回収に御協力下さい

12345678 PS

THE MATERIAL ADD A POSTSCRIPT

PRODUCT NAME CHANGE \triangle

E-E (10:1)

NOTES 4 : NUMBER OF CONNECTORS PER A MAGAZINE CASE SHALL BE IN ACCORDANCE WITH THE LIST BELOW.
5 : THESE CONNECTORS SHALL BE ON SALED IN ACCORDANCE WITH THE MULTIPLE QUANTITY ON THE LIST.

CODE No.	PART No.	QUANTITY OF CONNECTOR
CL543-2001-3-20	DF11Z- 4DS-2V(20)	41
CL543-2002-6-20	DF11Z- 6DS-2V(20)	35
CL543-2003-9-20	DF11Z- 8DS-2V(20)	30
CL543-2004-1-20	DF11Z-10DS-2V(20)	27
CL543-2005-4-20	DF11Z-12DS-2V(20)	24
CL543-2006-7-20	DF11Z-14DS-2V(20)	22
CL543-2007-0-20	DF11Z-16DS-2V(20)	20
CL543-2008-2-20	DF11Z-18DS-2V(20)	18
CL543-2009-5-20	DF11Z-20DS-2V(20)	17
CL543-2010-4-20	DF11Z-22DS-2V(20)	16
CL543-2011-7-20	DF11Z-24DS-2V(20)	15
CL543-2012-0-20	DF11Z-26DS-2V(20)	14
CL543-2013-2-20	DF11Z-28DS-2V(20)	13
CL543-2014-5-20	DF11Z-30DS-2V(20)	12
CL543-2015-8-20	DF11Z-32DS-2V(20)	12
CL543-2016-0-20	DF11Z-40DS-2V(20)	10

HRS	DRAWING NO.	EDC3-306129-01
	PART NO.	DF11Z-*DS-2V(20)
	CODE NO.	CL543

\triangle 2/2

X-ON Electronics

Largest Supplier of Electrical and Electronic Components

Click to view similar products for [Headers & Wire Housings](#) category:

Click to view products by [Hirose](#) manufacturer:

Other Similar products are found below :

[892-18-020-10-001101](#) [58102-G61-06LF](#) [582553-1](#) [0009485154](#) [009176003701906](#) [0050291907](#) [LY20-4P-DT1-P1E-BR](#) [02.125.8002.8](#)
[609-3404](#) [61062-3](#) [622-0430](#) [622-3653LF](#) [63453-116](#) [636-1030](#) [636-1427](#) [636-3427](#) [636-4007](#) [641938-9](#) [641991-4](#) [644827-2](#) [65817-010LF](#)
[65817-015LF](#) [65863-015LF](#) [66207-023LF](#) [67095-007LF](#) [67601157](#) [68648-049](#) [70.362.1628.0](#) [70-4210](#) [70-4226B](#) [70-4853B](#) [707-5020](#) [707-](#)
[5028](#) [71.350.2428.0](#) [71918-208LF](#) [71961-016LF](#) [733-134](#) [733-162](#) [754199-000](#) [760-3052](#) [787-8014-00](#) [79531-3000](#) [FCN-360C032-B](#) [FCN-](#)
[367T-T012/H](#) [FCN-723D010/2](#) [80.063.4001.1](#) [800-90-001-10-001000](#) [800-90-010-10-002000](#) [801-43-002-10-013000](#) [801-43-006-10-002000](#)