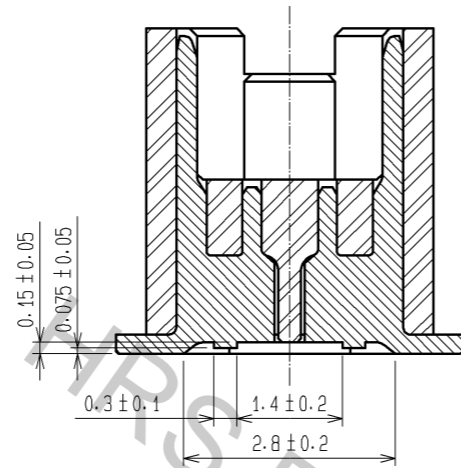
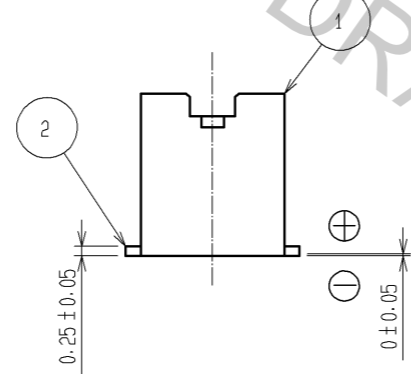
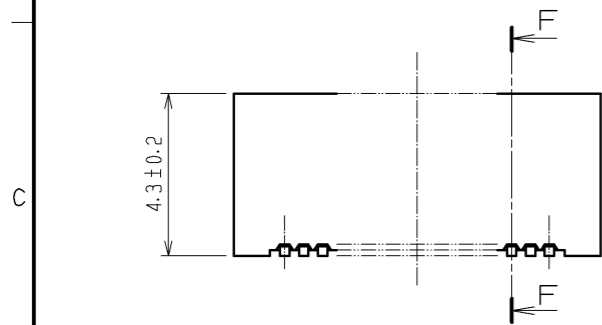


F-F (10:1)

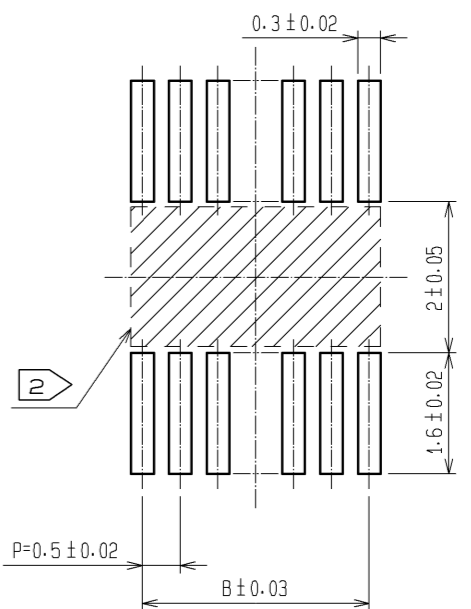
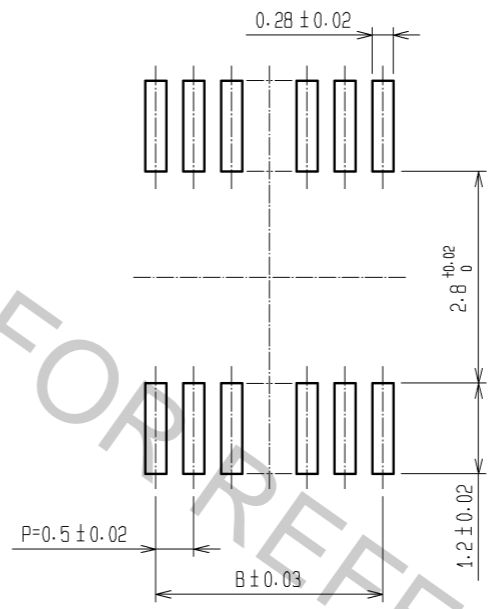


| CODE No. | CONTACT | A | B | C | D | E |
|-----------------|---------|------|------|------|------|------|
| CL537-0578-8-81 | 20 | 7.2 | 4.5 | 5.3 | 5.7 | 5.3 |
| CL537-0580-0-81 | 30 | 9.7 | 7.0 | 7.8 | 8.2 | 7.8 |
| CL537-0581-2-81 | 36 | 11.2 | 8.5 | 9.3 | 9.7 | 9.3 |
| CL537-0582-5-81 | 40 | 12.2 | 9.5 | 10.3 | 10.7 | 10.3 |
| CL537-0584-0-81 | 50 | 14.7 | 12.0 | 12.8 | 13.2 | 12.8 |
| CL537-0586-6-81 | 60 | 17.2 | 14.5 | 15.3 | 15.7 | 15.3 |



RECOMMEND METAL MASK PATTERN (10:1)

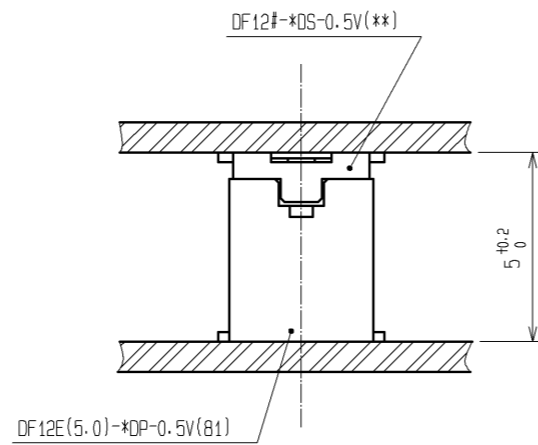
RECOMMENDED LAND PATTERN (10:1)



RECOMMENDED THICKNESS OF METAL MASK : 120 μm

RECOMMENDED THICKNESS OF SOLDER PASTE : 120 μm

NOTES 1 LEAD CO-PLANARITY SHALL BE 0.08 mm MAX.
 2 IF THERE IS PATTERN ON PART, THERE IS A POSSIBILITY THAT IT WILL MAKE CONTACT WITH THE LEADS.

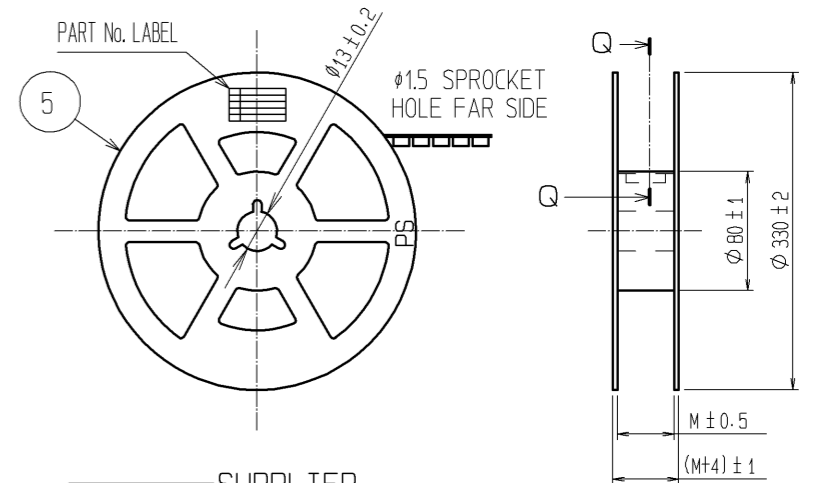
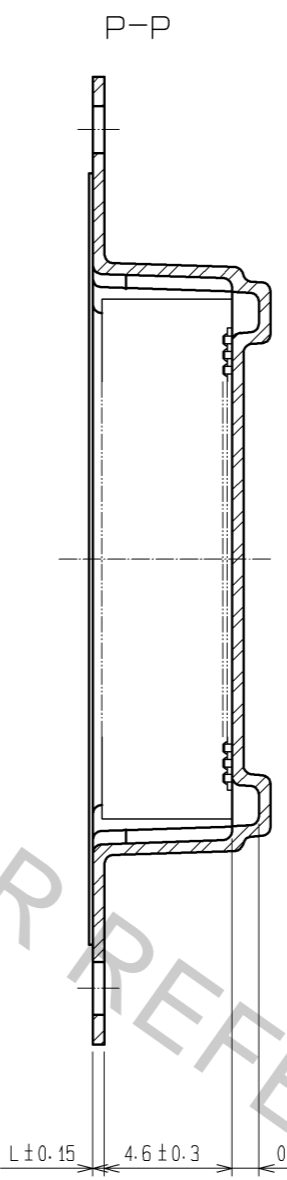
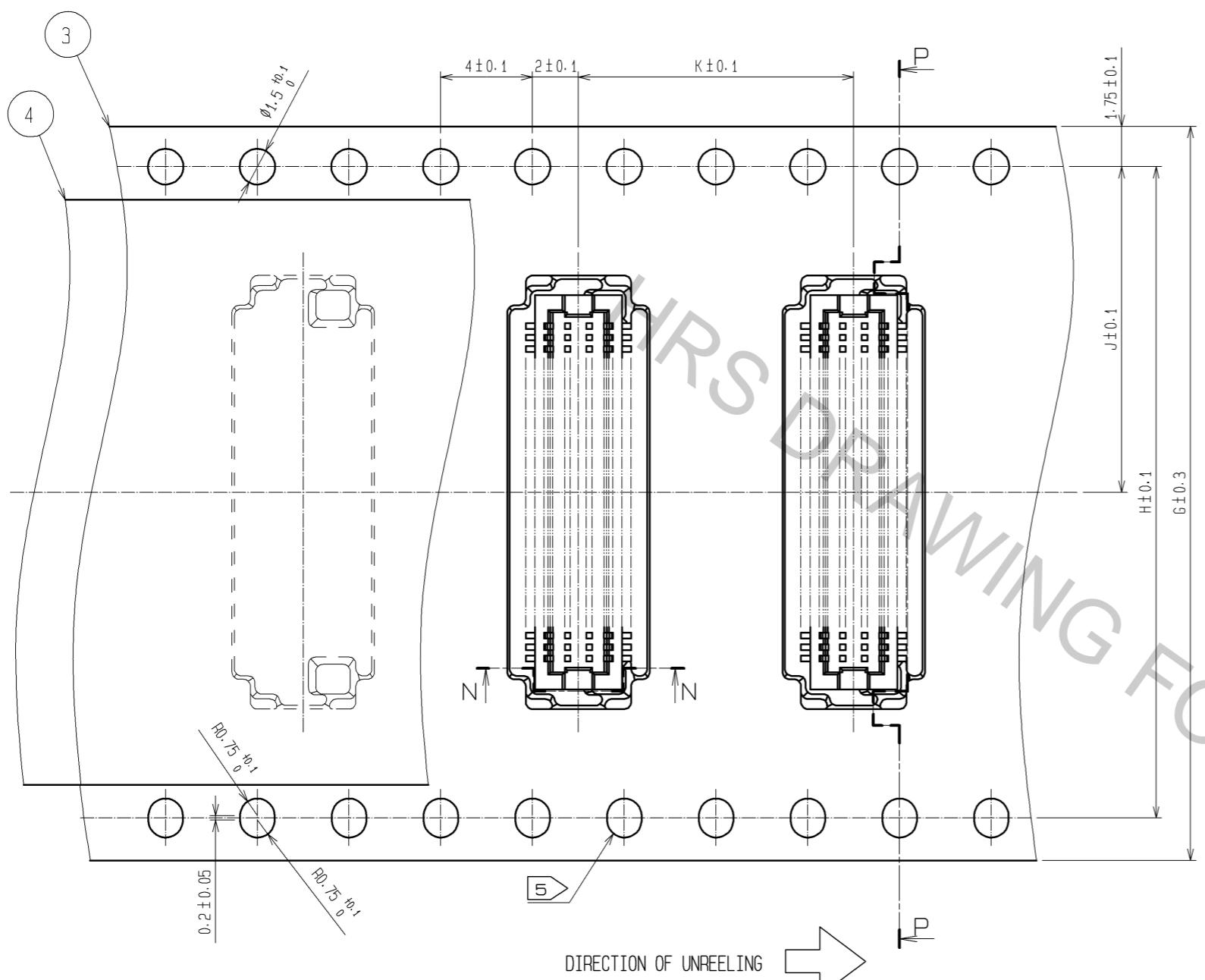


| NO. | MATERIAL | FINISH . REMARKS | NO. | MATERIAL | FINISH . REMARKS |
|-----|-----------------|--|-----|-----------|-------------------------------|
| 2 | PHOSPHOR BRONZE | CONTACT AREA:GOLD PLATED 0.2μm min LEAD AREA:GOLD PLATED 0.015μm min OTHERS(UNDER PLATING):NICKEL PLATED 2μm min | 6 | PS | CLEAR (REINFORCEMENT COLLAR) |
| | | | 5 | PS | BLACK (PLASTIC REEL) |
| | | | 4 | POLYESTER | CLEAR (COVER TAPE) |
| 1 | POLYAMIDE | UL94V-0. NATURAL (BEIGE) | 3 | PS | CLEAR (EMBOSSED CARRIER TAPE) |

| UNITS | SCALE | COUNT | DESCRIPTION OF REVISIONS | DESIGNED | CHECKED | DATE |
|-------------------------|-------|-------|--------------------------|----------------------------------|---------|------|
| mm | 5 : 1 | △ | | | | |
| APPROVED : KH. IKEDA | | | 13. 08. 19 | DRAWING NO. EDC3-163516-77 | | |
| CHECKED : YH. MICHIDA | | | 13. 08. 08 | PART NO. DF12E(5.0)-*DP-0.5V(81) | | |
| DESIGNED : YN. SAKAMOTO | | | 13. 08. 08 | CODE NO. CL537 | | |
| DRAWN : KR. AJITO | | | 13. 08. 08 | 1/2 | | |

Feb.1.2018 Copyright 2018 HIROSE ELECTRIC CO., LTD. All Rights Reserved.

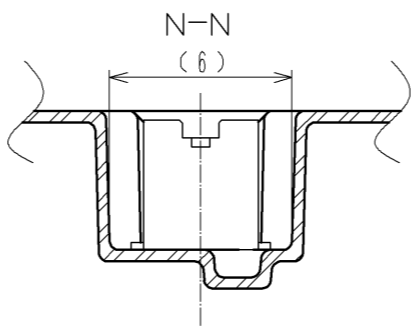
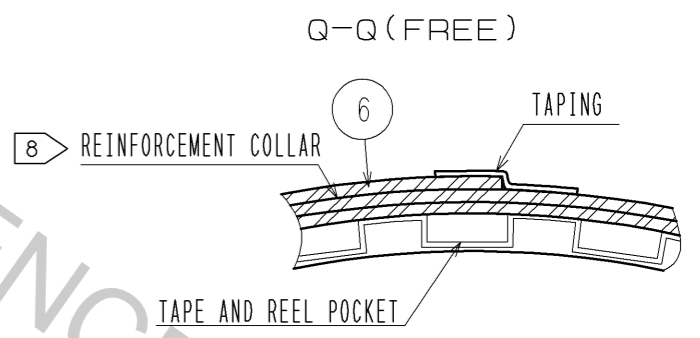
STYLE AND DIMENTION OF REEL (FREE)



SUPPLIER
QUANTITY
PART No.
CODE No.
DATE OF MANUFACTURED

DETAIL OF PART No. LABEL

| | |
|------|-------------------------|
| 生産月日 | 年 月 日 |
| 図番 | CL537-****-*81 |
| 品名 | DF12E(5.0)-*DP-0.5V(81) |
| 納入数量 | 1000K0 |
| 納入者 | ヒロセ電機(株) |



| CODE No. | CONTACT | G | H | J | K | L | M |
|-----------------|---------|----|------|------|------|------|------|
| CL537-0578-8-81 | 20 | 16 | - | 7.5 | 12.0 | 0.38 | 17.5 |
| CL537-0580-0-81 | 30 | 24 | - | 11.5 | 12.0 | 0.38 | 25.5 |
| CL537-0581-2-81 | 36 | 24 | - | 11.5 | 12.0 | 0.38 | 25.5 |
| CL537-0582-5-81 | 40 | 24 | - | 11.5 | 12.0 | 0.38 | 25.5 |
| CL537-0584-0-81 | 50 | 24 | - | 11.5 | 8.0 | 0.30 | 25.5 |
| CL537-0586-6-81 | 60 | 32 | 28.4 | 14.2 | 12.0 | 0.38 | 33.5 |

- NOTES
- 3 1 REEL 1000 CONNECTORS.
 - 4 AT THE BEGINNING OF THE REEL, 30 COMPONENTS SHALL BE EMPTY. AT THE END OF THE REEL, 20 COMPONENTS SHALL BE EMPTY.
 - 5 WHEN THE TAPE WIDTH IS 32 mm, SPROCKET HOLES SHALL BE SET ON BOTH SIDE OF REEL AS SHOWN ON THIS DRAWING.
 - 6 PEEL FORCE REFERS TO JIS C 0806. (IEC 60286-3)
 - 7 THE REEL IS PACKED WITH A POLYETHYLENE MATERIAL, TOGETHER WITH A DRYING AGENT.
 - 8 AFTER PACKING, ROLL 2 METERS OF THE REINFORCEMENT COLLAR TO OUTER CIRCUMFERENCE OF TAPE AND REEL POCKET, AND TAPE DOWN AT THE END THE COLLAR.

| | | |
|------------|-------------|-------------------------|
| HRS | DRAWING NO. | EDC3-163516-77 |
| | PART NO. | DF12E(5.0)-*DP-0.5V(81) |
| | CODE NO. | CL537 |
| | | 2/2 |

X-ON Electronics

Largest Supplier of Electrical and Electronic Components

Click to view similar products for [Board to Board & Mezzanine Connectors](#) category:

Click to view products by [Hirose](#) manufacturer:

Other Similar products are found below :

[589158040000018](#) [MDF7C-18P-2.54DSA\(55\)](#) [FCN-230C068-11](#) [FCN-268F012-G/BD](#) [FCN-268F036-G/BD](#) [FCN-268M012-G/0D](#) [FCN-268M024-G/1D](#) [FCN-723J004/1](#) [MIS-048-01-F-D-DP-K](#) [832-10-034-10-001000](#) [FX4C-80S-1.27DSA](#) [FCN-214Q030-G/0](#) [FCN-234P048-G/0](#) [FCN-235D050-G/C](#) [210-93-314-41-105000](#) [2-22603-0](#) [MDF7-40DP-2.54DSA\(55\)](#) [AXG720047](#) [MIT-114-03-F-D-K](#) [55323-1519](#) [DF33-2P-3.3DSA\(24\)](#) [YFT-20-05-H-03-SB-K](#) [503308-3040](#) [026-6203-PDB](#) [027-6203-PDB](#) [069159702701000](#) [10123981-102LF](#) [101A10019X](#) [55650-0588-C](#) [68682-310LF](#) [68684-306](#) [75140-7012](#) [87471-650](#) [YTW-30-07-H-Q-410-140](#) [FCN-268F024-G0D](#) [10124054-515LF](#) [68685-603](#) [8-1616154-3](#) [MIS-019-01-F-D](#) [FCN-268M024-G/3D](#) [FCN-268M036-G/BD](#) [20021832-06016C1LF](#) [KX15-20KLDL-E1000E](#) [AXE810124](#) [FCN-214J100-G/0](#) [FCN-230C068-E/S](#) [AXE812124](#) [AXE816124](#) [AXE720127](#) [354184](#)