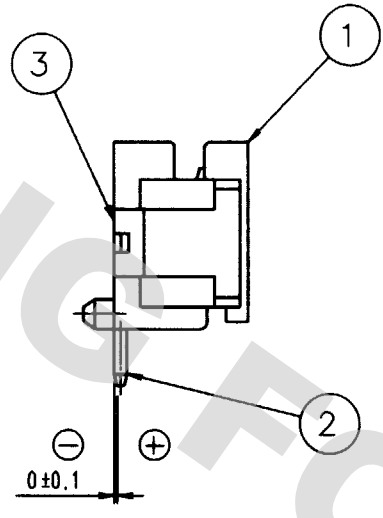
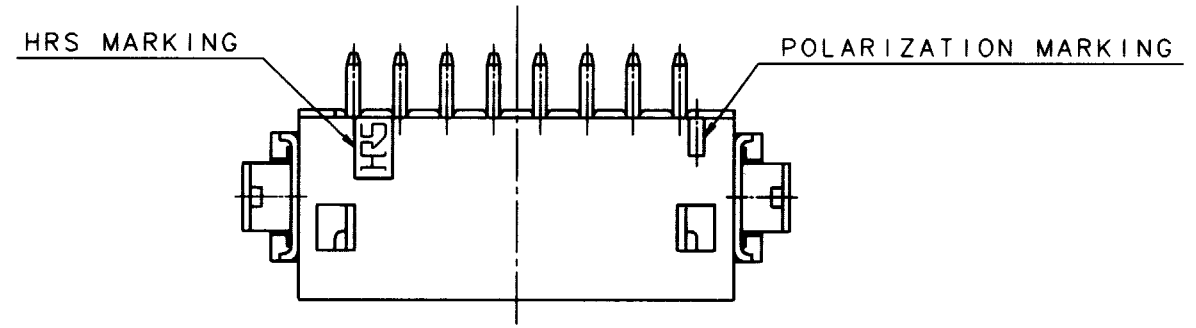
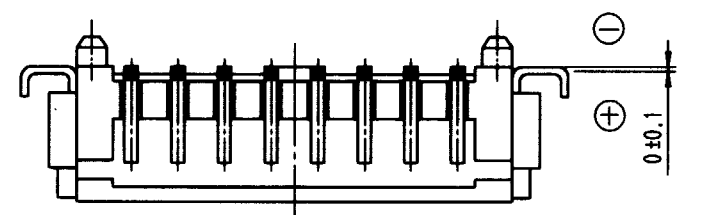
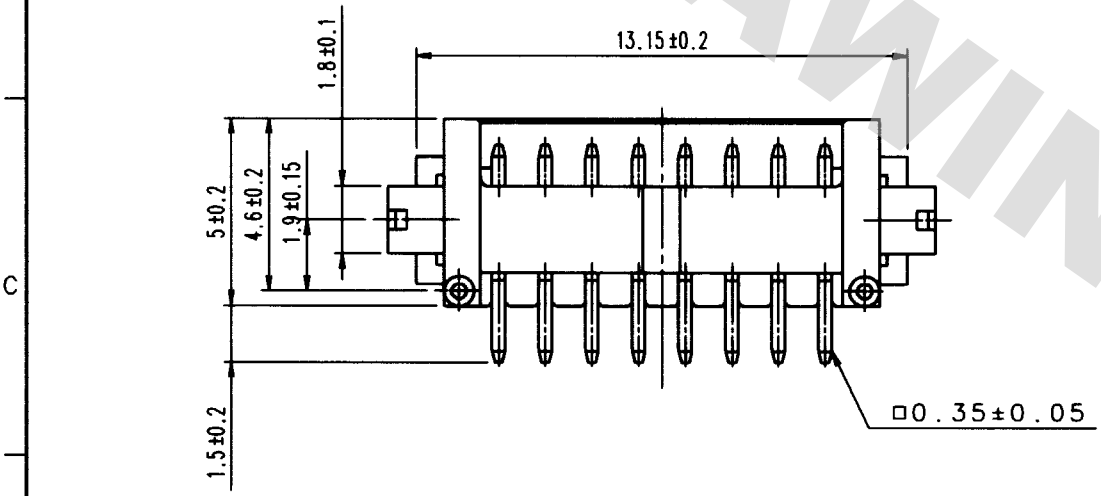
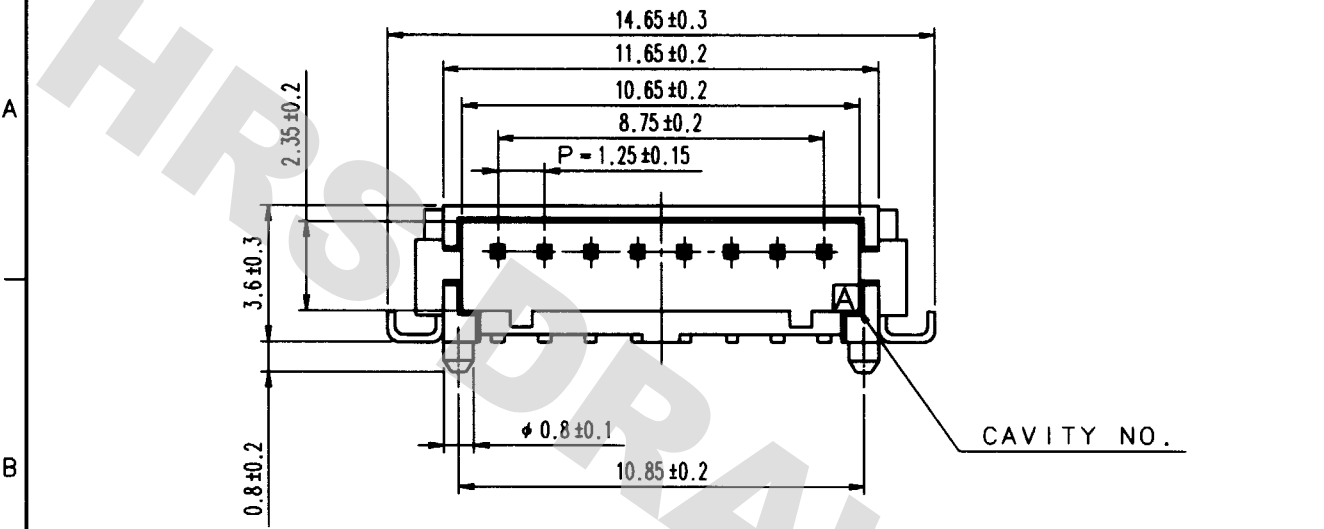
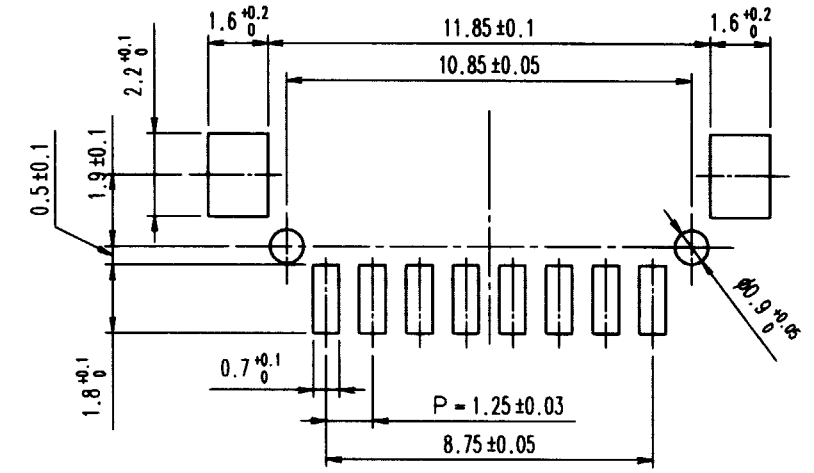


DRAWING FOR REFERENCE: This is subject to change without notice
08/11/2012

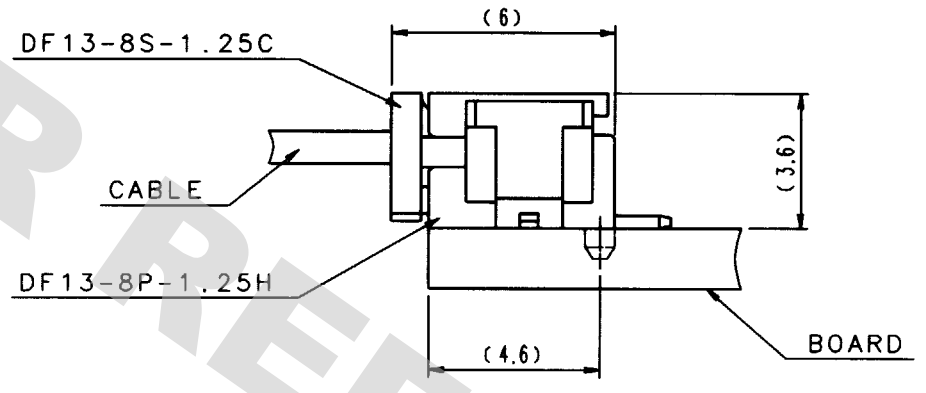
COUNT	DESCRIPTION OF REVISIONS	BY	CHKD	DATE	COUNT	DESCRIPTION OF REVISIONS	BY	CHKD	DATE



RECOMENDED PATTERN



MATED CONNECTORS

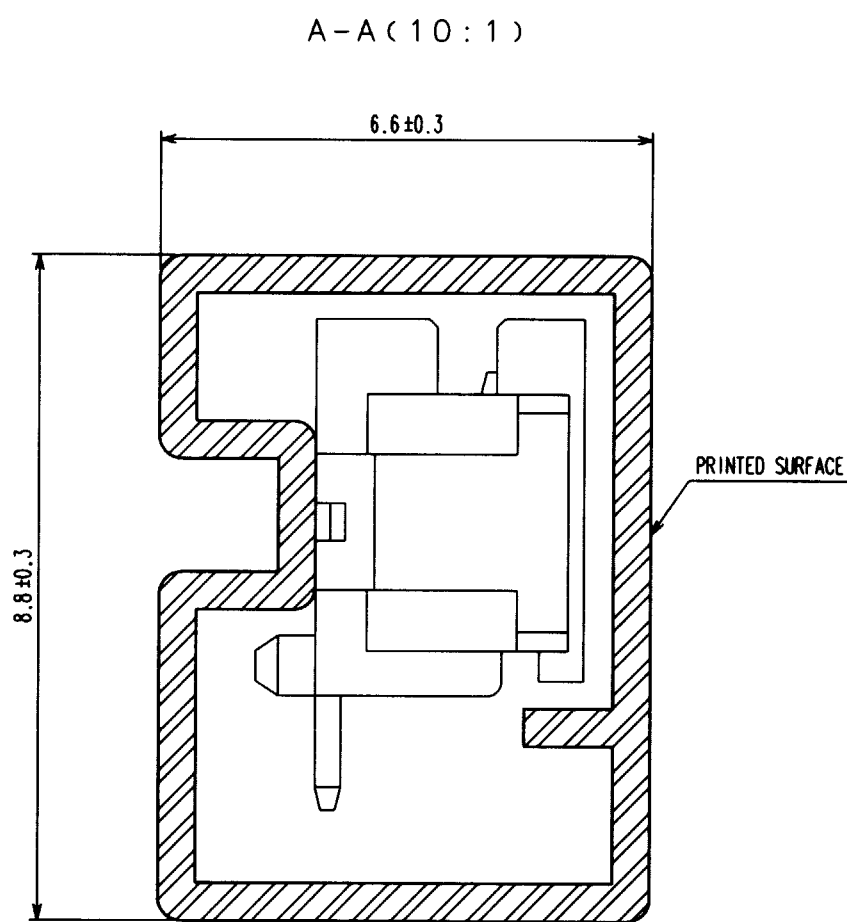
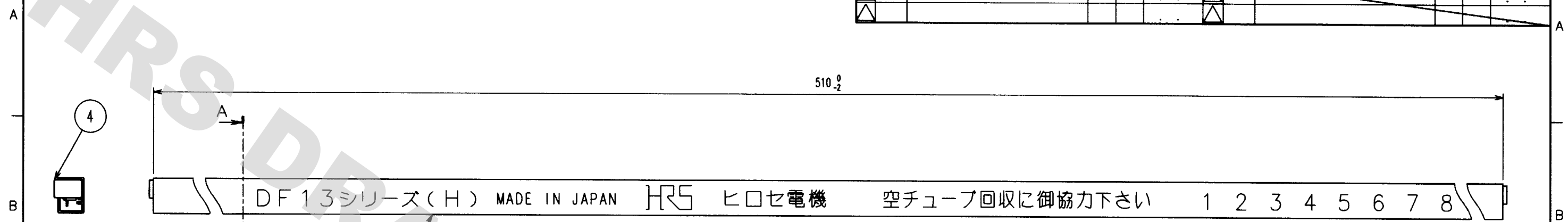


NOTE 1: LEAD CO-PLANARITY INCLUDE REINFORCED METAL FITTINGS SHALL BE WITHIN 0.1mm.

3	PHOSPHOR BRONZE	TIN PLATED	5	RIGID VINYLCHLORIDE	ELECTROSTATIC PROTECTION
2	BRASS	GOLD PLATED	4	S.PVC	GRAY (STOPPER)
1	POLYAMIDE	UL94V-0	FINISH, REMARKS		
NO.	MATERIAL	FINISH, REMARKS	NO.	MATERIAL	FINISH, REMARKS
CODE NO. (OLD) CL			DRAWN M. KURAMASHI 02.02.21	DESIGNED S. Denpanga 02.02.21	CHECKED T. Miyazaki 02.02.21
DRAWING NO. EDC3-081849-01			PART NO. DF13-8P-1.25H(50)		
SCALE 5 : 1			CODE NO. CL536-0257-8-50		
UNITS mm			HRS HIROSE ELECTRIC CO., LTD.		

TO

COUNT	DESCRIPTION OF REVISIONS	BY	CHKD	DATE	COUNT	DESCRIPTION OF REVISIONS	BY	CHKD	DATE
△					△				
△					△				
△					△				



- NOTES2: THE TUBE HAS ONE STOPPER AT EACH END.
 3: WARPAGE OF THE TUBE SHALL BE ALLOWED ± 2mm PER 510mm.
 4: MINIMUM UNIT OF PURCHASE SHALL BE THE QUANTITY OF CONNECTORS IN TUBE(33 PIECES).
 5: THE SUFFIX OF CODE NO. SHALL BE '-50'.

NO.	MATERIAL	FINISH, REMARKS	NO.	MATERIAL	FINISH, REMARKS
CODE NO. (OLD) CL			DRAWN	DESIGNED	CHECKED
			M. KURAMASHI	<i>S. Komuro</i>	<i>T. Miyazaki</i>
			02.02.21	02.02.21	02.02.21
				APPROVED	RELEASED
				<i>K. Katayama</i>	
				02.2.22	
DRAWING NO. EDC3-081849-01			PART NO. DF13-8P-1.25H(50)		
UNITS mm			CODE NO. CL536-0257-8-50		

DRAWING FOR REFERENCE: This is subject to change without notice
08/11/2012

TO

X-ON Electronics

Largest Supplier of Electrical and Electronic Components

Click to view similar products for [Headers & Wire Housings](#) category:

Click to view products by [Hirose](#) manufacturer:

Other Similar products are found below :

[892-18-020-10-001101](#) [58102-G61-06LF](#) [582553-1](#) [0009485154](#) [009176003701906](#) [0050291907](#) [LY20-4P-DT1-P1E-BR](#) [02.125.8002.8](#)
[609-3404](#) [61062-3](#) [622-0430](#) [622-3653LF](#) [63453-116](#) [636-1030](#) [636-1427](#) [636-3427](#) [636-4007](#) [641938-9](#) [641991-4](#) [644827-2](#) [65817-010LF](#)
[65817-015LF](#) [65863-015LF](#) [66207-023LF](#) [67095-007LF](#) [67601157](#) [68648-049](#) [70.362.1628.0](#) [70-4210](#) [70-4226B](#) [70-4853B](#) [707-5020](#) [707-5028](#) [71.350.2428.0](#) [71918-208LF](#) [71961-016LF](#) [733-134](#) [733-162](#) [754199-000](#) [760-3052](#) [787-8014-00](#) [79531-3000](#) [FCN-360C032-B](#) [FCN-367T-T012/H](#) [FCN-723D010/2](#) [80.063.4001.1](#) [800-90-001-10-001000](#) [800-90-010-10-002000](#) [801-43-002-10-013000](#) [801-43-006-10-002000](#)