

5					7				
COUNT	DESCRIPTION OF REVISIONS	BY	CHKD	DATE	COUNT	DESCRIPTION OF REVISIONS	BY	CHKD	DATE
△				..	△				..
△				..	△				..
△				..	△				..

HRS

DRAWING FOR REFERENCE

DF13シリーズ(V) MADE IN JAPAN HRS ヒロセ電機 空チューブ回収に御協力下さい 1 2 3 4 5 6 7 8

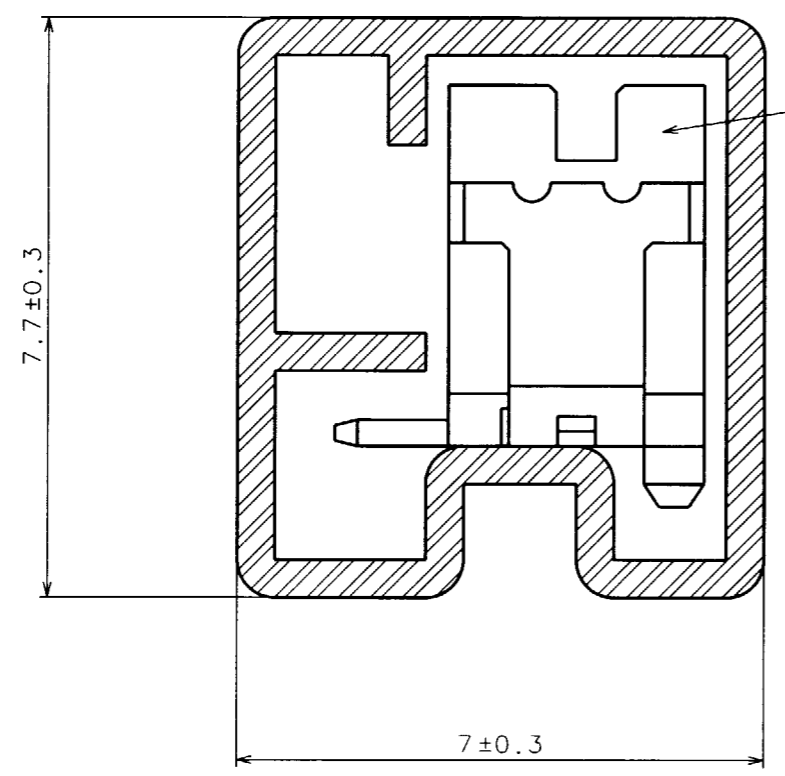
510<sup>0</sup>/<sub>2</sub>

A  
A

3

1

A-A (10:1)



- NOTES
1. THE TUBE HAS ONE STOPPER AT EACH END.
  2. WARPAGE OF THE TUBE SHALL BE ALLOWED  $\pm 2$  mm PER 510 mm
  3. MINIMUM UNIT OF PURCHASE SHALL BE THE QUANTITY OF CONNECTORS IN TUBE (30 PIECES).
  4. THE SUFFIX OF CODE NO. SHALL BE '-50'

2	DF13-9P-1.25V(01)	(30 PIECES IN TUBE)			
1	RIGID POLYVINYLCHLORIDE	ELECTROSTATIC PROTECTION, CLEAR	3	S. PVC	
NO.	MATERIAL	FINISH, REMARKS	NO.	MATERIAL	FINISH, REMARKS
CODE NO. (OLD) CL			DRAWN	DESIGNED	CHECKED
			H. Tsuboi	<i>K. Hidomura</i>	J. Oda
			97.11.4	97.12.3	97.12.4
					APPROVED
					<i>M. Yamamoto</i>
					RELEASED
					97.12.5
DRAWING NO. EDC3-081836-04			PART NO. DF13-9P-1.25V(50)		
SCALE FREE			CODE NO. CL536-0208-2-50		
UNITS mm			HRS HIROSE ELECTRIC CO., LTD.		

DRAWING FOR REFERENCE: This is subject to change without notice  
08/11/2012

TO

## X-ON Electronics

Largest Supplier of Electrical and Electronic Components

*Click to view similar products for [Headers & Wire Housings](#) category:*

*Click to view products by [Hirose](#) manufacturer:*

Other Similar products are found below :

[892-18-020-10-001101](#) [58102-G61-06LF](#) [582553-1](#) [0009485154](#) [009176003701906](#) [0050291907](#) [LY20-4P-DT1-P1E-BR](#) [02.125.8002.8](#)  
[609-3404](#) [61062-3](#) [622-0430](#) [622-3653LF](#) [63453-116](#) [636-1030](#) [636-1427](#) [636-3427](#) [636-4007](#) [641938-9](#) [641991-4](#) [644827-2](#) [65817-010LF](#)  
[65817-015LF](#) [65863-015LF](#) [66207-023LF](#) [67095-007LF](#) [67601157](#) [68648-049](#) [70.362.1628.0](#) [70-4210](#) [70-4226B](#) [70-4853B](#) [707-5020](#) [707-5028](#) [71.350.2428.0](#) [71918-208LF](#) [71961-016LF](#) [733-134](#) [733-162](#) [754199-000](#) [760-3052](#) [787-8014-00](#) [79531-3000](#) [FCN-360C032-B](#) [FCN-367T-T012/H](#) [FCN-723D010/2](#) [80.063.4001.1](#) [800-90-001-10-001000](#) [800-90-010-10-002000](#) [801-43-002-10-013000](#) [801-43-006-10-002000](#)