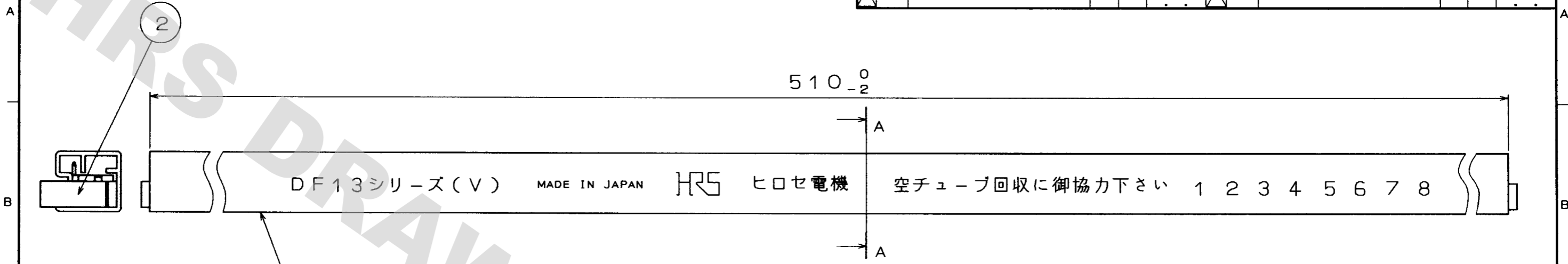
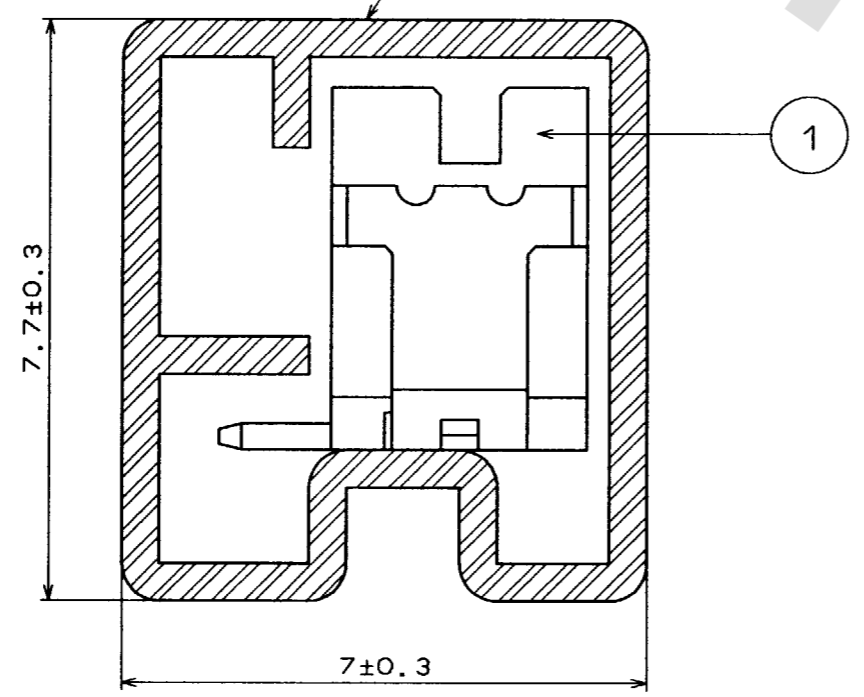


1 2 3 4 5 6 7 8

COUNT	DESCRIPTION OF REVISIONS	BY	CHKD	DATE	COUNT	DESCRIPTION OF REVISIONS	BY	CHKD	DATE
△				..	△				..
△				..	△				..
△				..	△				..



A-A SECTION (10:1)
PRINTED SURFACE



CODE No.	PART NO.	QUANTITY OF CONNECTOR
C L 536-0401-2-20	DF13C- 2P-1.25V(20)	67
C L 536-0402-5-20	DF13C- 3P-1.25V(20)	57
C L 536-0403-8-20	DF13C- 4P-1.25V(20)	49
C L 536-0404-0-20	DF13C- 5P-1.25V(20)	44
C L 536-0405-3-20	DF13C- 6P-1.25V(20)	39
C L 536-0406-6-20	DF13C- 7P-1.25V(20)	36
C L 536-0407-9-20	DF13C- 8P-1.25V(20)	33
C L 536-0408-1-20	DF13C- 9P-1.25V(20)	30
C L 536-0409-4-20	DF13C-10P-1.25V(20)	28
C L 536-0410-3-20	DF13C-11P-1.25V(20)	26
C L 536-0411-6-20	DF13C-12P-1.25V(20)	24
C L 536-0413-1-20	DF13C-14P-1.25V(20)	21
C L 536-0414-4-20	DF13C-15P-1.25V(20)	20

- NOTES 1: THE TUBE HAS ONE STOPPER AT EACH END.
 2: WARPAGE OF THE TUBE SHALL BE ALLOWED ±2mm PER 510mm.
 3: MINIMUM UNIT OF PURCHASE SHALL BE THE QUANTITY OF CONNECTORS IN TUBE.
 4: THE SUFFIX OF CODE NO. SHALL BE '-20'.

2	S. PVC		3	RIGID VINYLCHLORIDE	ELECTROSTATIC PROTECTION
1	DF13C-*P-1.25V (BEIGE)				
NO.	MATERIAL	FINISH, REMARKS	NO.	MATERIAL	FINISH, REMARKS
CODE NO. (OLD)			DRAWN	DESIGNED	CHECKED
			R. SASAKI	J. Tashiro	J. Oma
			95.6.27	95.6.28	95.6.28
					95.6.30
DRAWING NO. EDC3-084376-01			PART NO. DF13C-*P-1.25V(20)		
SCALE FR:EE			CODE NO. CODE NO. SHALL BE IN ACCORDANCE WITH TABLE 1/1		
UNITS mm			HRS HIROSE ELECTRIC CO., LTD.		

DRAWING FOR REFERENCE: This is subject to change without notice 08/11/2012

TO

X-ON Electronics

Largest Supplier of Electrical and Electronic Components

Click to view similar products for [Headers & Wire Housings](#) category:

Click to view products by [Hirose](#) manufacturer:

Other Similar products are found below :

[892-18-020-10-001101](#) [58102-G61-06LF](#) [582553-1](#) [0009485154](#) [009176003701906](#) [0050291907](#) [LY20-4P-DT1-P1E-BR](#) [02.125.8002.8](#)
[609-3404](#) [61062-3](#) [622-0430](#) [622-3653LF](#) [63453-116](#) [636-1030](#) [636-1427](#) [636-3427](#) [636-4007](#) [641938-9](#) [641991-4](#) [644827-2](#) [65817-010LF](#)
[65817-015LF](#) [65863-015LF](#) [66207-023LF](#) [67095-007LF](#) [67601157](#) [68648-049](#) [70.362.1628.0](#) [70-4210](#) [70-4226B](#) [70-4853B](#) [707-5020](#) [707-5028](#) [71.350.2428.0](#) [71918-208LF](#) [71961-016LF](#) [733-134](#) [733-162](#) [754199-000](#) [760-3052](#) [787-8014-00](#) [79531-3000](#) [FCN-360C032-B](#) [FCN-367T-T012/H](#) [FCN-723D010/2](#) [80.063.4001.1](#) [800-90-001-10-001000](#) [800-90-010-10-002000](#) [801-43-002-10-013000](#) [801-43-006-10-002000](#)