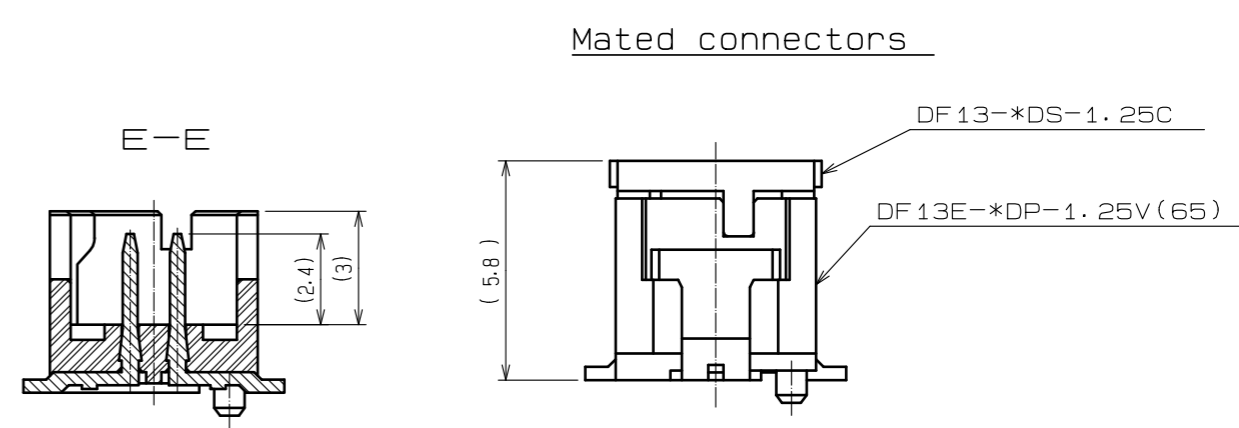
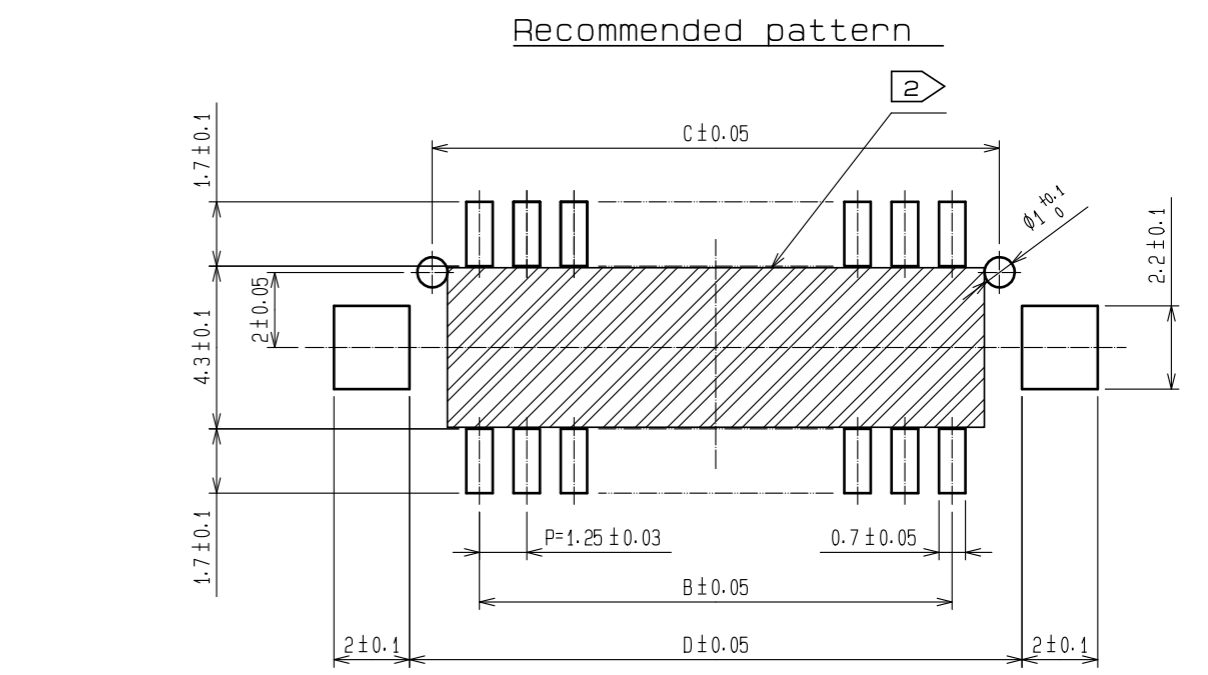
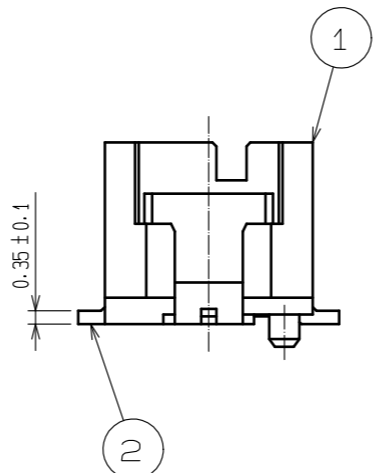
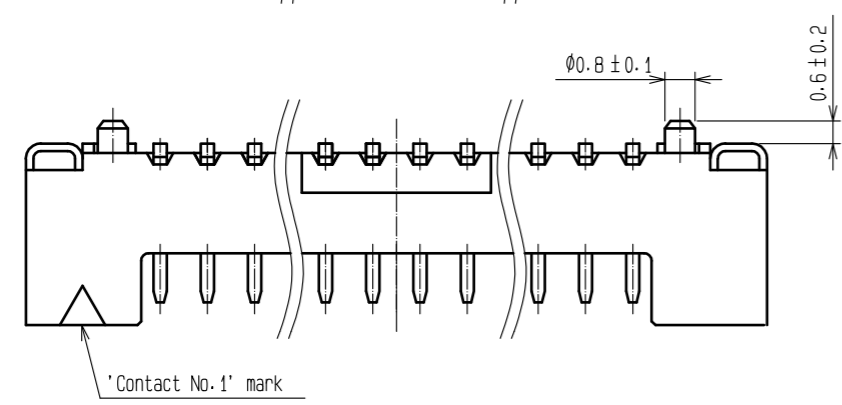
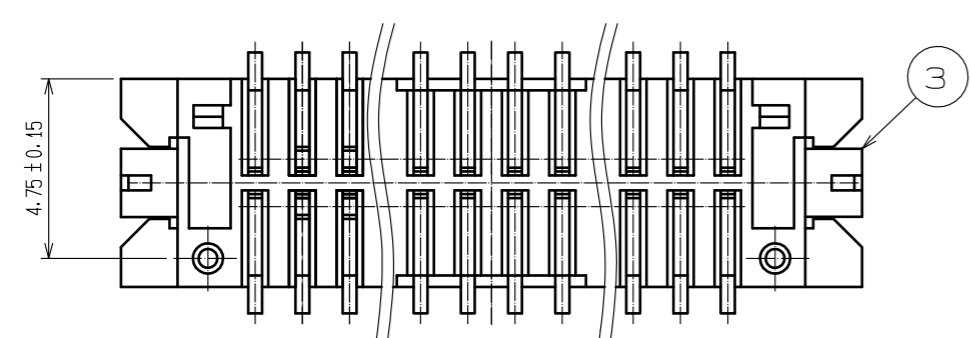
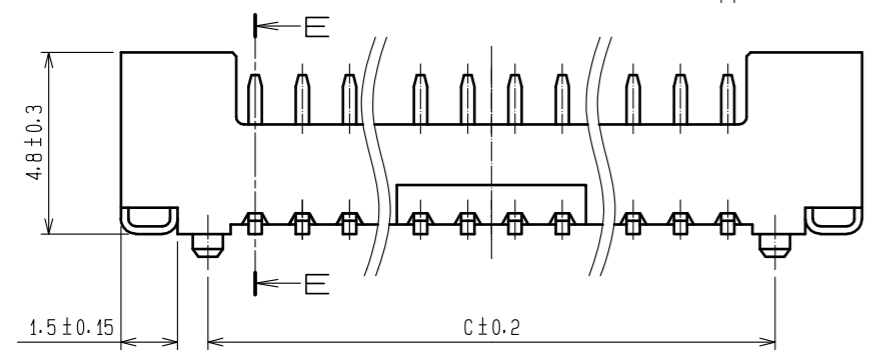
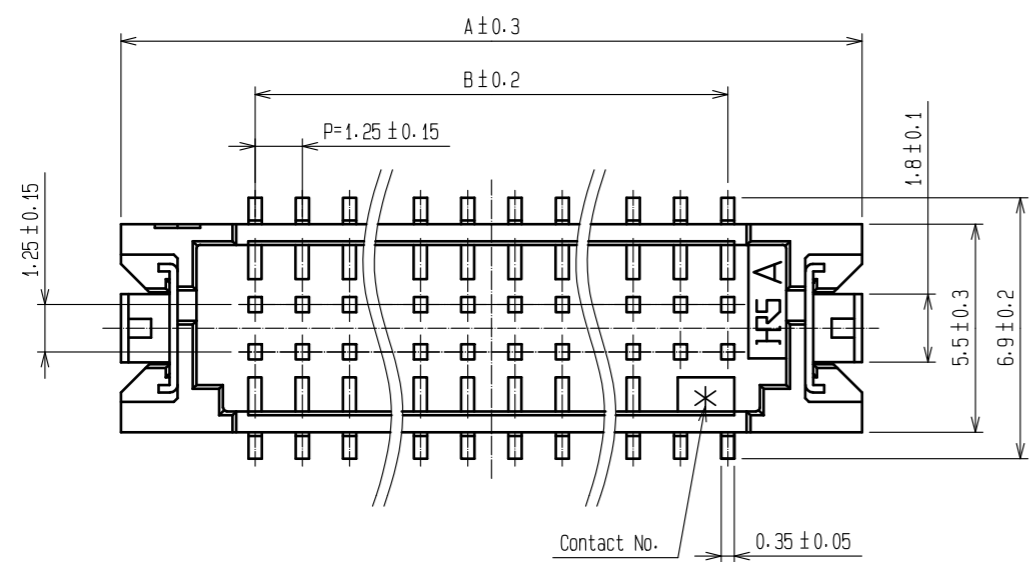


2021/03/24 01:58:35(JST) Carole Austin  
 RoHS2(10 substances conformity)  
 DRAWING FOR REFERENCE: This is subject to change without notice  
 In cases where the application will demand a high level of reliability, such as automotive, please contact a company representative for further information.



Notes 1 : Lead co-planality include reinforced metal fittings shall be 0.1mm MAX.  
 ② : If there are pattern and a bia hole on part, there is a possibility that it will make contact with the leads.

Part No.	Number of contacts	Code No.	A	B	C	D
DF13E-10DP-1.25V(65)	10	CL536-0566-0-65	12.1	5.0	7.5	8.7
DF13E-20DP-1.25V(65)	20	CL536-0567-0-65	18.35	11.25	13.75	14.95
DF13E-30DP-1.25V(65)	30	CL536-0568-0-65	24.60	17.50	20.00	21.20
DF13E-40DP-1.25V(65)	40	CL536-0569-0-65	30.85	23.75	26.25	27.45

NO.	MATERIAL	FINISH	REMARKS	NO.	MATERIAL	FINISH	REMARKS
2	Brass		Contact area:Gold plated 0.2µm MIN Lead area:Tin plated 1µm MIN Under plating:Nickel 1µm MIN	5	Elastomer		Gray
1	Polyamide		Beige,UL94V-0	4	R.PVC		Electrostatic protection,Clear
				3	Phosphor bronze		Tin plated 1µm MIN

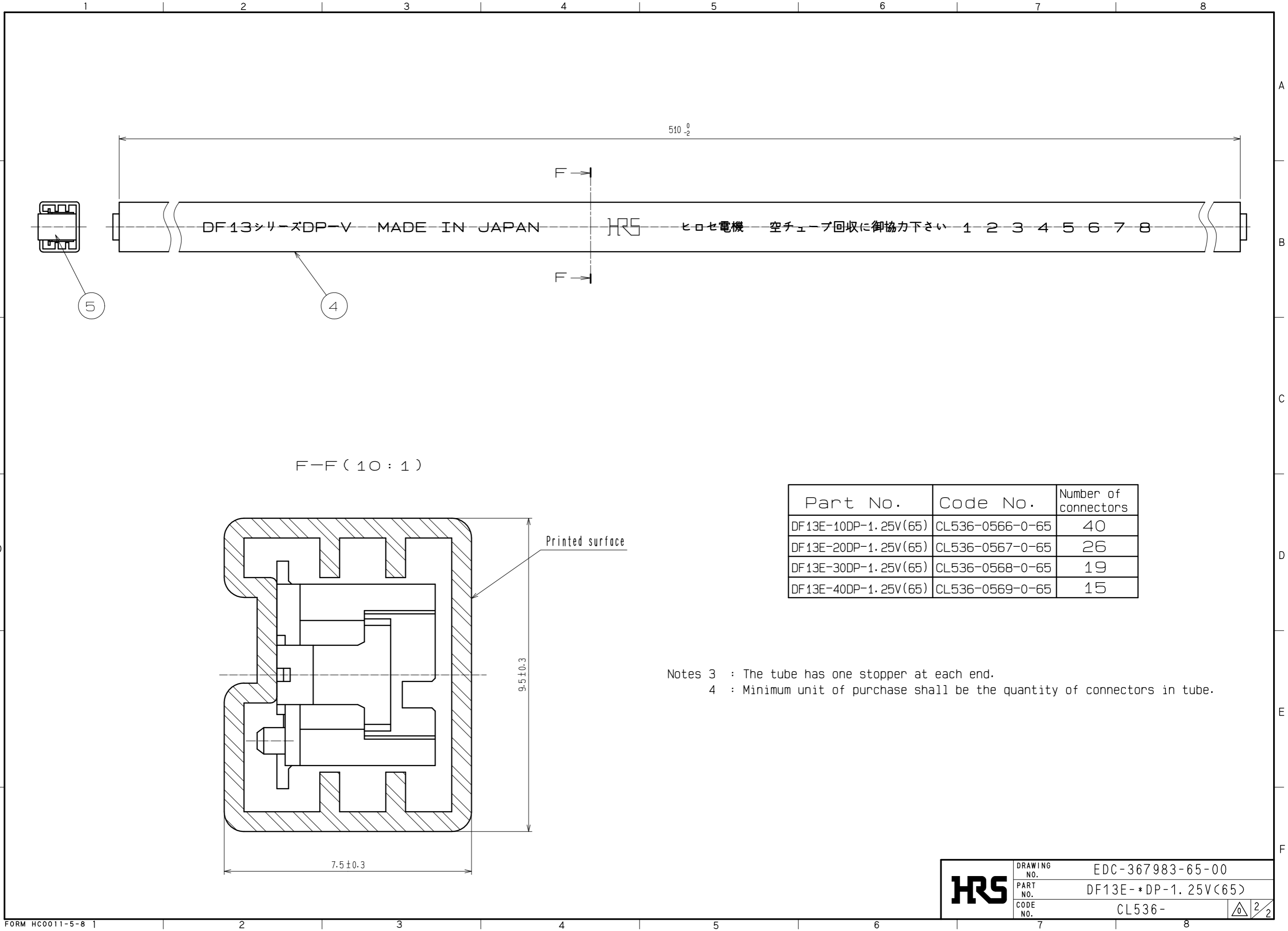
  

UNITS	SCALE	COUNT	DESCRIPTION OF REVISIONS	DESIGNED	CHECKED	DATE
mm	5 : 1	△				

<b>HRS</b> HIROSE ELECTRIC CO., LTD.	APPROVED : HS. OKAWA	20200330	DRAWING NO.	EDC-367983-65-00
	CHECKED : TS. KUMAZAWA	20200330	PART NO.	DF13E-*DP-1.25V(65)
	DESIGNED : HK. HAYASHI	20200330	CODE NO.	CL536-
	DRAWN : DS. HIROWATARI	20200326		

2021/03/24 01:58:35(JST) Carole Austin  
 RoHS2(10 substances conformity)  
 DRAWING FOR REFERENCE: This is subject to change without notice  
 In cases where the application will demand a high level of reliability, such as automotive, please contact a company representative for further information.



Part No.	Code No.	Number of connectors
DF13E-10DP-1.25V(65)	CL536-0566-0-65	40
DF13E-20DP-1.25V(65)	CL536-0567-0-65	26
DF13E-30DP-1.25V(65)	CL536-0568-0-65	19
DF13E-40DP-1.25V(65)	CL536-0569-0-65	15

Notes 3 : The tube has one stopper at each end.  
 4 : Minimum unit of purchase shall be the quantity of connectors in tube.

<b>HRS</b>	DRAWING NO.	EDC-367983-65-00
	PART NO.	DF13E-*DP-1.25V(65)
	CODE NO.	CL536-

## X-ON Electronics

Largest Supplier of Electrical and Electronic Components

*Click to view similar products for [Headers & Wire Housings](#) category:*

*Click to view products by [Hirose](#) manufacturer:*

Other Similar products are found below :

[0015917161](#) [0022155065](#) [57102-F02-18ULF](#) [58102-G61-06LF](#) [582553-1](#) [01.001.5753.1](#) [0050291907](#) [02.125.8002.8](#) [609-3404](#) [61062-3](#)  
[CSU011177004](#) [622-0430](#) [622-3653LF](#) [63453-116](#) [636-1030](#) [636-1427](#) [636-3427](#) [636-4007](#) [641938-9](#) [65495-038](#) [65692-001LF](#) [65781-018](#)  
[65781-047](#) [65817-010LF](#) [65817-015LF](#) [67095-007LF](#) [67601157](#) [68631-112](#) [699319-000](#) [70.362.1628.0](#) [70-4210](#) [70-4226B](#) [70-4853B](#) [707-](#)  
[5028](#) [71.350.2428.0](#) [733-134](#) [733-162](#) [760-3052](#) [MHR-64-VUAL](#) [80.063.4001.1](#) [800-90-001-10-001000](#) [801-43-002-10-013000](#)  
[801-43-006-10-002000](#) [803-43-024-10-001000](#) [803-93-012-10-001000](#) [8-1437020-4](#) [819-22-004-30-001101](#) [820-22-006-30-001101](#)  
[820-22-008-30-001101](#) [821-22-002-10-001101](#)