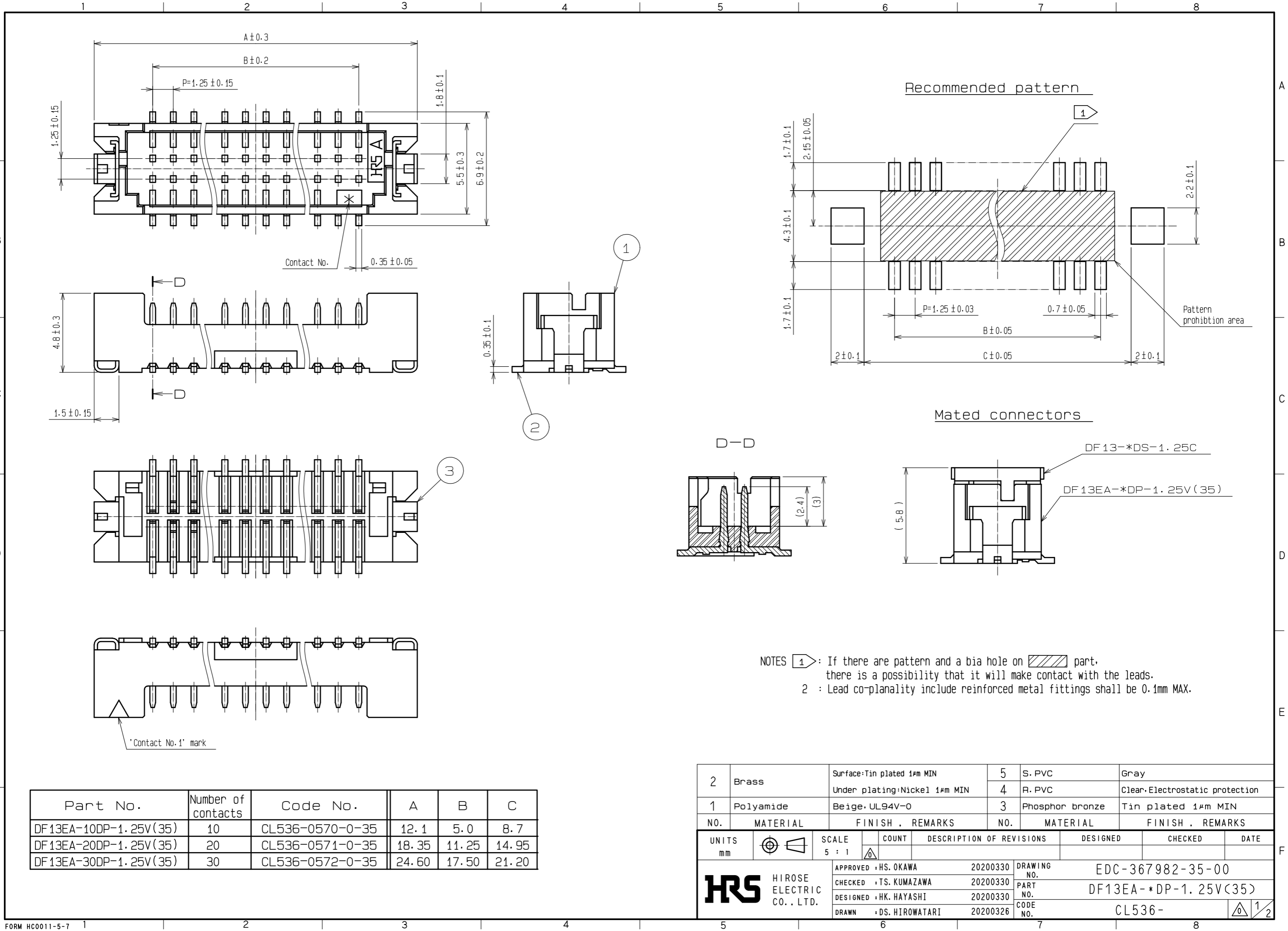


RoHS2(10 substances conformity)
 DRAWING FOR REFERENCE: This is subject to change without notice
 In cases where the application will demand a high level of reliability, such as automotive, please contact a company representative for further information.

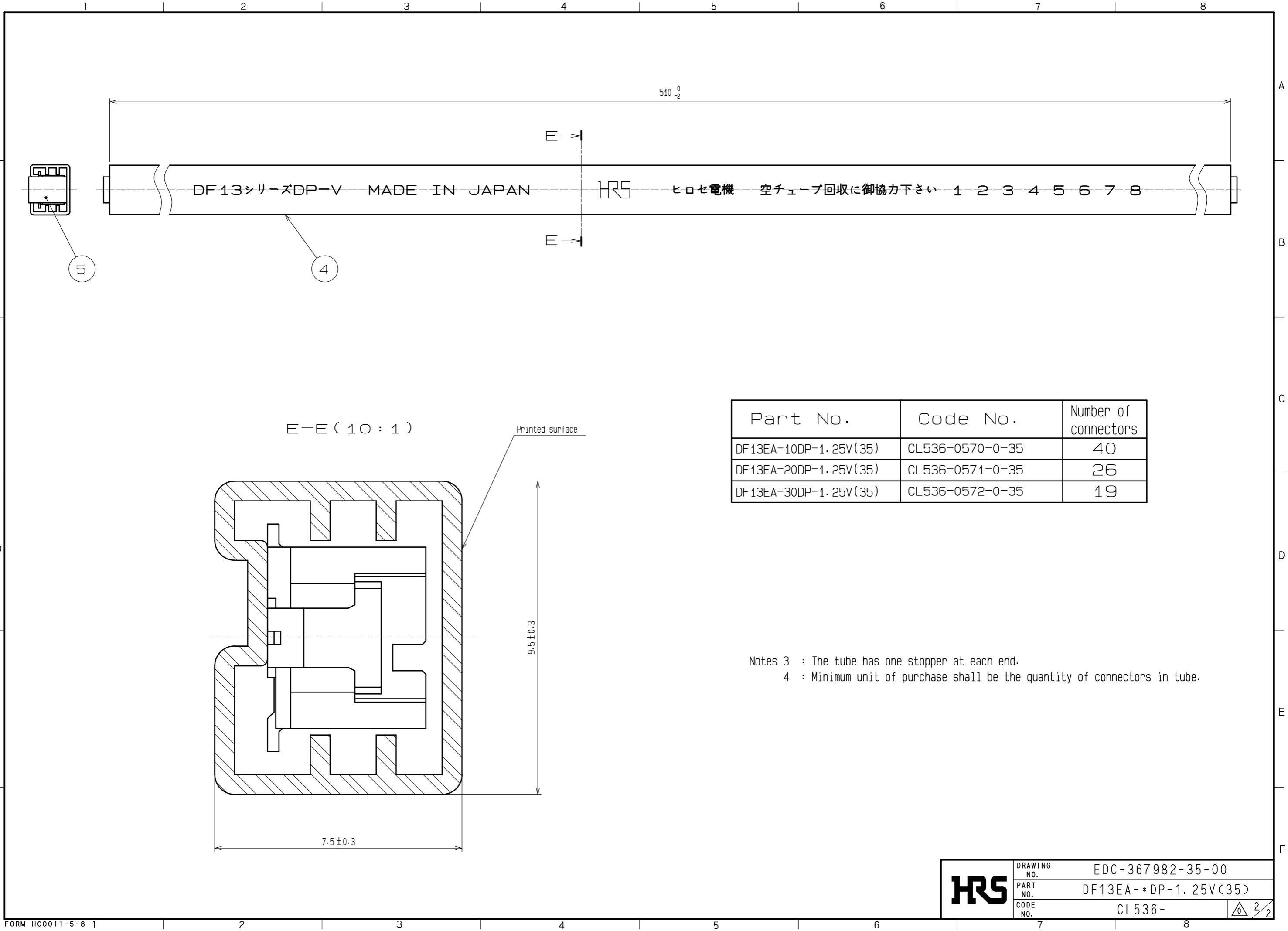


Part No.	Number of contacts	Code No.	A	B	C
DF13EA-10DP-1.25V(35)	10	CL536-0570-0-35	12.1	5.0	8.7
DF13EA-20DP-1.25V(35)	20	CL536-0571-0-35	18.35	11.25	14.95
DF13EA-30DP-1.25V(35)	30	CL536-0572-0-35	24.60	17.50	21.20

2	Brass	Surface: Tin plated 1μm MIN	5	S. PVC	Gray		
		Under plating: Nickel 1μm MIN	4	R. PVC	Clear. Electrostatic protection		
1	Polyamide	Beige. UL94V-0	3	Phosphor bronze	Tin plated 1μm MIN		
NO.	MATERIAL	FINISH . REMARKS	NO.	MATERIAL	FINISH . REMARKS		
UNITS	⊕	SCALE	COUNT	DESCRIPTION OF REVISIONS	DESIGNED	CHECKED	DATE
mm		5 : 1	△				
HRS HIROSE ELECTRIC CO., LTD.			APPROVED : HS. OKAWA 20200330 CHECKED : TS. KUMAZAWA 20200330 DESIGNED : HK. HAYASHI 20200330 DRAWN : DS. HIROWATARI 20200326	DRAWING NO. EDC-367982-35-00 PART NO. DF13EA-*DP-1.25V(35) CODE NO. CL536-	1/2		

NOTES 1: If there are pattern and a bia hole on part, there is a possibility that it will make contact with the leads.
 2 : Lead co-planality include reinforced metal fittings shall be 0.1mm MAX.

2021/03/24 02:29:55(JST) Carole Austin
 RoHS2(10 substances conformity)
 DRAWING FOR REFERENCE: This is subject to change without notice
 In cases where the application will demand a high level of reliability, such as automotive, please contact a company representative for further information.



Part No.	Code No.	Number of connectors
DF13EA-10DP-1.25V(35)	CL536-0570-0-35	40
DF13EA-20DP-1.25V(35)	CL536-0571-0-35	26
DF13EA-30DP-1.25V(35)	CL536-0572-0-35	19

Notes 3 : The tube has one stopper at each end.
 4 : Minimum unit of purchase shall be the quantity of connectors in tube.

HRS	DRAWING NO.	EDC-367982-35-00	
	PART NO.	DF13EA-*DP-1.25V(35)	
	CODE NO.	CL536-	2/2

X-ON Electronics

Largest Supplier of Electrical and Electronic Components

Click to view similar products for [Headers & Wire Housings](#) category:

Click to view products by [Hirose](#) manufacturer:

Other Similar products are found below :

[0015917161](#) [0022155065](#) [57102-F02-18ULF](#) [58102-G61-06LF](#) [582553-1](#) [01.001.5753.1](#) [0050291907](#) [02.125.8002.8](#) [609-3404](#) [61062-3](#)
[CSU011177004](#) [622-0430](#) [622-3653LF](#) [63453-116](#) [636-1030](#) [636-1427](#) [636-3427](#) [636-4007](#) [641938-9](#) [65495-038](#) [65692-001LF](#) [65781-018](#)
[65781-047](#) [65817-010LF](#) [65817-015LF](#) [67095-007LF](#) [67601157](#) [68631-112](#) [699319-000](#) [70.362.1628.0](#) [70-4210](#) [70-4226B](#) [70-4853B](#) [707-](#)
[5028](#) [71.350.2428.0](#) [733-134](#) [733-162](#) [760-3052](#) [MHR-64-VUAL](#) [80.063.4001.1](#) [800-90-001-10-001000](#) [801-43-002-10-013000](#)
[801-43-006-10-002000](#) [803-43-024-10-001000](#) [803-93-012-10-001000](#) [8-1437020-4](#) [819-22-004-30-001101](#) [820-22-006-30-001101](#)
[820-22-008-30-001101](#) [821-22-002-10-001101](#)