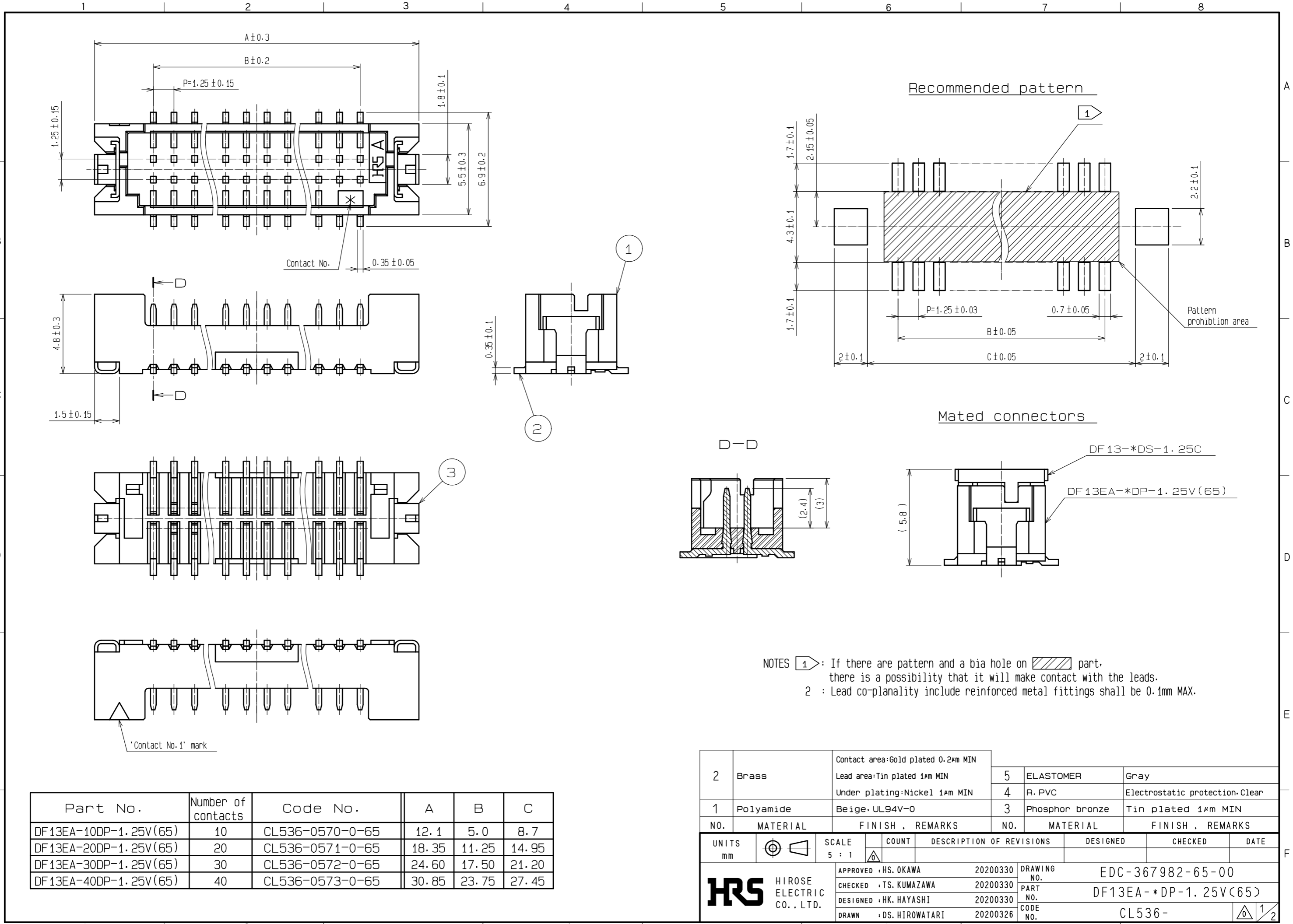


RoHS2(10 substances conformity)  
 DRAWING FOR REFERENCE: This is subject to change without notice  
 In cases where the application will demand a high level of reliability, such as automotive, please contact a company representative for further information.

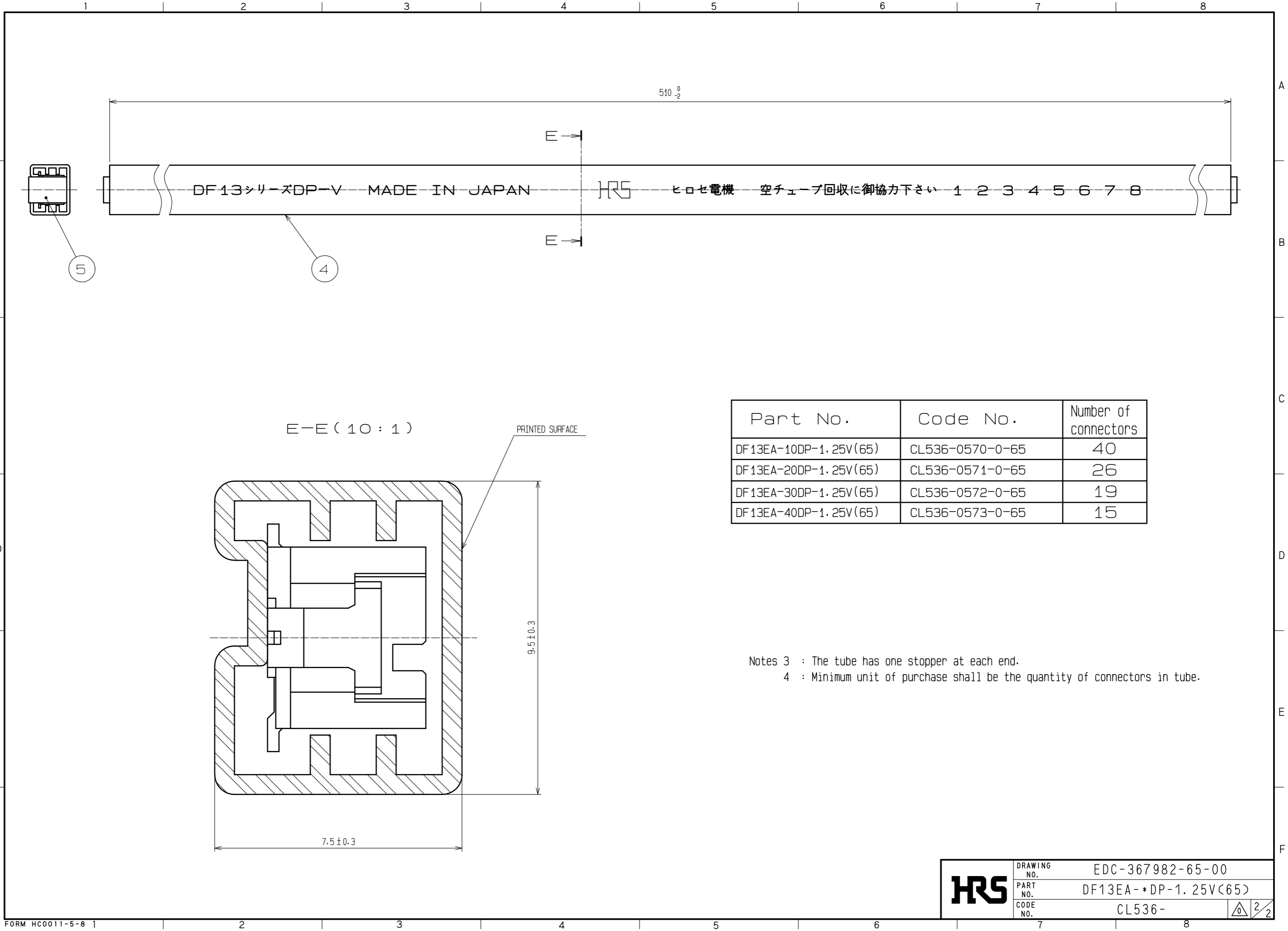


NOTES 1: If there are pattern and a bia hole on part, there is a possibility that it will make contact with the leads.  
 2: Lead co-planality include reinforced metal fittings shall be 0.1mm MAX.

Part No.	Number of contacts	Code No.	A	B	C
DF13EA-10DP-1.25V(65)	10	CL536-0570-0-65	12.1	5.0	8.7
DF13EA-20DP-1.25V(65)	20	CL536-0571-0-65	18.35	11.25	14.95
DF13EA-30DP-1.25V(65)	30	CL536-0572-0-65	24.60	17.50	21.20
DF13EA-40DP-1.25V(65)	40	CL536-0573-0-65	30.85	23.75	27.45

2	Brass	Contact area:Gold plated 0.2μm MIN	5	ELASTOMER	Gray			
		Lead area:Tin plated 1μm MIN		4	R. PVC	Electrostatic protection:Clear		
1	Polyamide	Under plating:Nickel 1μm MIN	3	Phosphor bronze	Tin plated 1μm MIN			
		Beige,UL94V-0		FINISH . REMARKS				
UNITS		SCALE	COUNT	DESCRIPTION OF REVISIONS		DESIGNED	CHECKED	DATE
mm		5 : 1	△					
<b>HIROSE ELECTRIC CO., LTD.</b>		APPROVED :HS. OKAWA	20200330	DRAWING NO.		EDC-367982-65-00		
		CHECKED :TS. KUMAZAWA	20200330	PART NO.		DF13EA-*DP-1.25V(65)		
		DESIGNED :HK. HAYASHI	20200330	CODE NO.		CL536-		
		DRAWN :DS. HIROWATARI	20200326	NO.		1/2		

2021/03/24 02:31:48(JST) Carole Austin  
 RoHS2(10 substances conformity)  
 DRAWING FOR REFERENCE: This is subject to change without notice  
 In cases where the application will demand a high level of reliability, such as automotive, please contact a company representative for further information.



Part No.	Code No.	Number of connectors
DF13EA-10DP-1.25V(65)	CL536-0570-0-65	40
DF13EA-20DP-1.25V(65)	CL536-0571-0-65	26
DF13EA-30DP-1.25V(65)	CL536-0572-0-65	19
DF13EA-40DP-1.25V(65)	CL536-0573-0-65	15

Notes 3 : The tube has one stopper at each end.  
 4 : Minimum unit of purchase shall be the quantity of connectors in tube.

<b>HRS</b>	DRAWING NO.	EDC-367982-65-00	
	PART NO.	DF13EA-*DP-1.25V(65)	
	CODE NO.	CL536-	2/2

## X-ON Electronics

Largest Supplier of Electrical and Electronic Components

*Click to view similar products for [Headers & Wire Housings](#) category:*

*Click to view products by [Hirose](#) manufacturer:*

Other Similar products are found below :

[0015917161](#) [0022155065](#) [57102-F02-18ULF](#) [58102-G61-06LF](#) [582553-1](#) [01.001.5753.1](#) [0050291907](#) [02.125.8002.8](#) [609-3404](#) [61062-3](#)  
[CSU011177004](#) [622-0430](#) [622-3653LF](#) [63453-116](#) [636-1030](#) [636-1427](#) [636-3427](#) [636-4007](#) [641938-9](#) [644827-2](#) [65495-038](#) [65692-001LF](#)  
[65781-018](#) [65781-047](#) [65817-010LF](#) [65817-015LF](#) [67095-007LF](#) [67601157](#) [68631-112](#) [68645-018](#) [699319-000](#) [70.362.1628.0](#) [70-4210](#) [70-4226B](#) [70-4853B](#) [71.350.2428.0](#) [733-134](#) [733-162](#) [760-3052](#) [MHR-64-VUAL](#) [80.063.4001.1](#) [800-90-001-10-001000](#) [801-43-002-10-013000](#)  
[801-43-006-10-002000](#) [803-43-024-10-001000](#) [803-93-012-10-001000](#) [8-1437020-4](#) [819-22-004-30-001101](#) [820-22-006-30-001101](#)  
[821-22-002-10-001101](#)