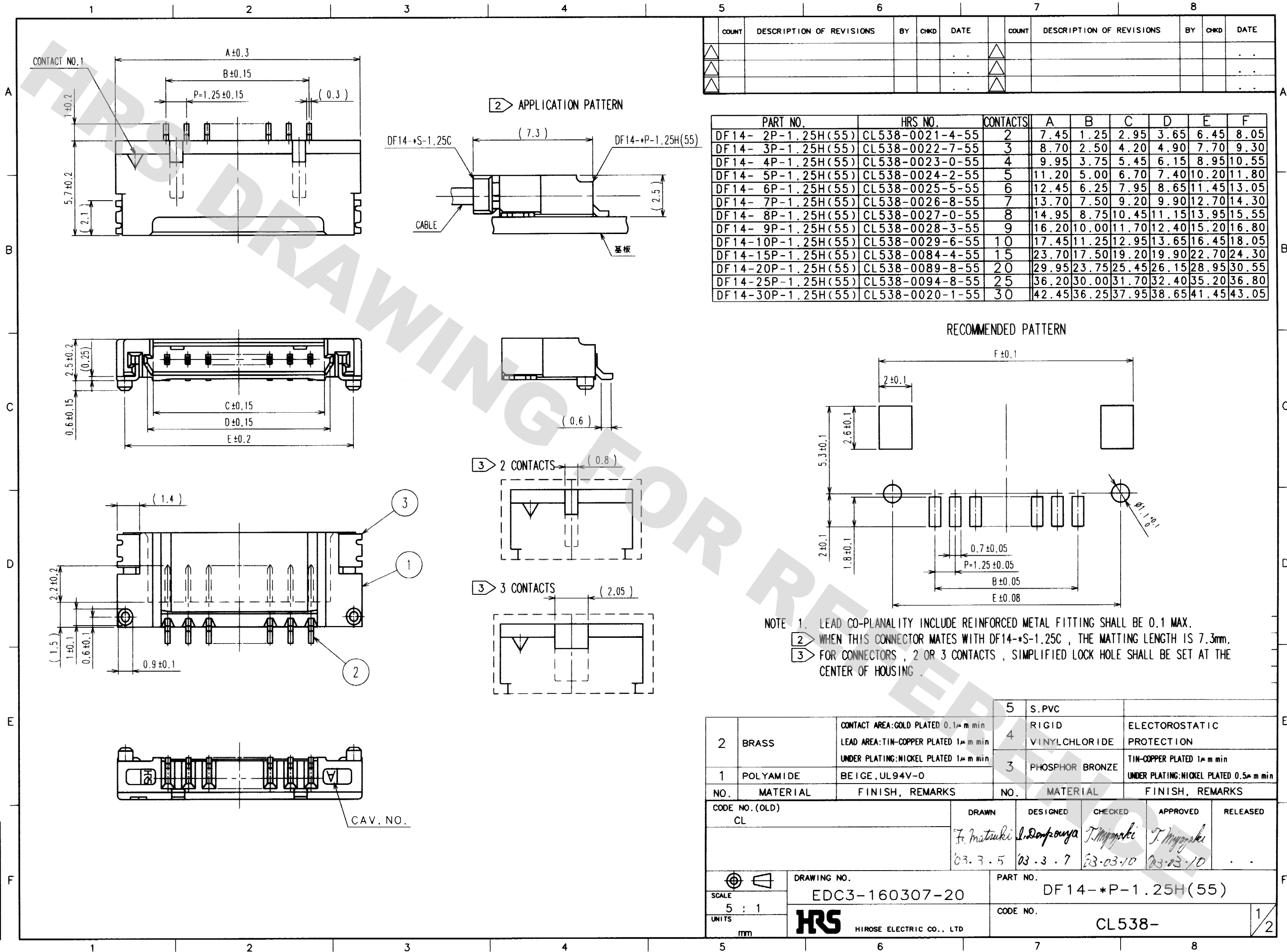


DRAWING FOR REFERENCE: This is subject to change without notice
08/11/2012

TO



COUNT	DESCRIPTION OF REVISIONS	BY	CHKD	DATE	COUNT	DESCRIPTION OF REVISIONS	BY	CHKD	DATE

PART NO.	HRS NO.	CONTACTS	A	B	C	D	E	F
DF14- 2P-1.25H(55)	CL538-0021-4-55	2	7.45	1.25	2.95	3.65	6.45	8.05
DF14- 3P-1.25H(55)	CL538-0022-7-55	3	8.70	2.50	4.20	4.90	7.70	9.30
DF14- 4P-1.25H(55)	CL538-0023-0-55	4	9.95	3.75	5.45	6.15	8.95	10.55
DF14- 5P-1.25H(55)	CL538-0024-2-55	5	11.20	5.00	6.70	7.40	10.20	11.80
DF14- 6P-1.25H(55)	CL538-0025-5-55	6	12.45	6.25	7.95	8.65	11.45	13.05
DF14- 7P-1.25H(55)	CL538-0026-8-55	7	13.70	7.50	9.20	9.90	12.70	14.30
DF14- 8P-1.25H(55)	CL538-0027-0-55	8	14.95	8.75	10.45	11.15	13.95	15.55
DF14- 9P-1.25H(55)	CL538-0028-3-55	9	16.20	10.00	11.70	12.40	15.20	16.80
DF14-10P-1.25H(55)	CL538-0029-6-55	10	17.45	11.25	12.95	13.65	16.45	18.05
DF14-15P-1.25H(55)	CL538-0084-4-55	15	23.70	17.50	19.20	19.90	22.70	24.30
DF14-20P-1.25H(55)	CL538-0089-8-55	20	29.95	23.75	25.45	26.15	28.95	30.55
DF14-25P-1.25H(55)	CL538-0094-8-55	25	36.20	30.00	31.70	32.40	35.20	36.80
DF14-30P-1.25H(55)	CL538-0020-1-55	30	42.45	36.25	37.95	38.65	41.45	43.05

NOTE 1. LEAD CO-PLANALITY INCLUDE REINFORCED METAL FITTING SHALL BE 0.1 MAX.
 2. WHEN THIS CONNECTOR MATES WITH DF14-*S-1.25C, THE MATING LENGTH IS 7.3mm.
 3. FOR CONNECTORS, 2 OR 3 CONTACTS, SIMPLIFIED LOCK HOLE SHALL BE SET AT THE CENTER OF HOUSING.

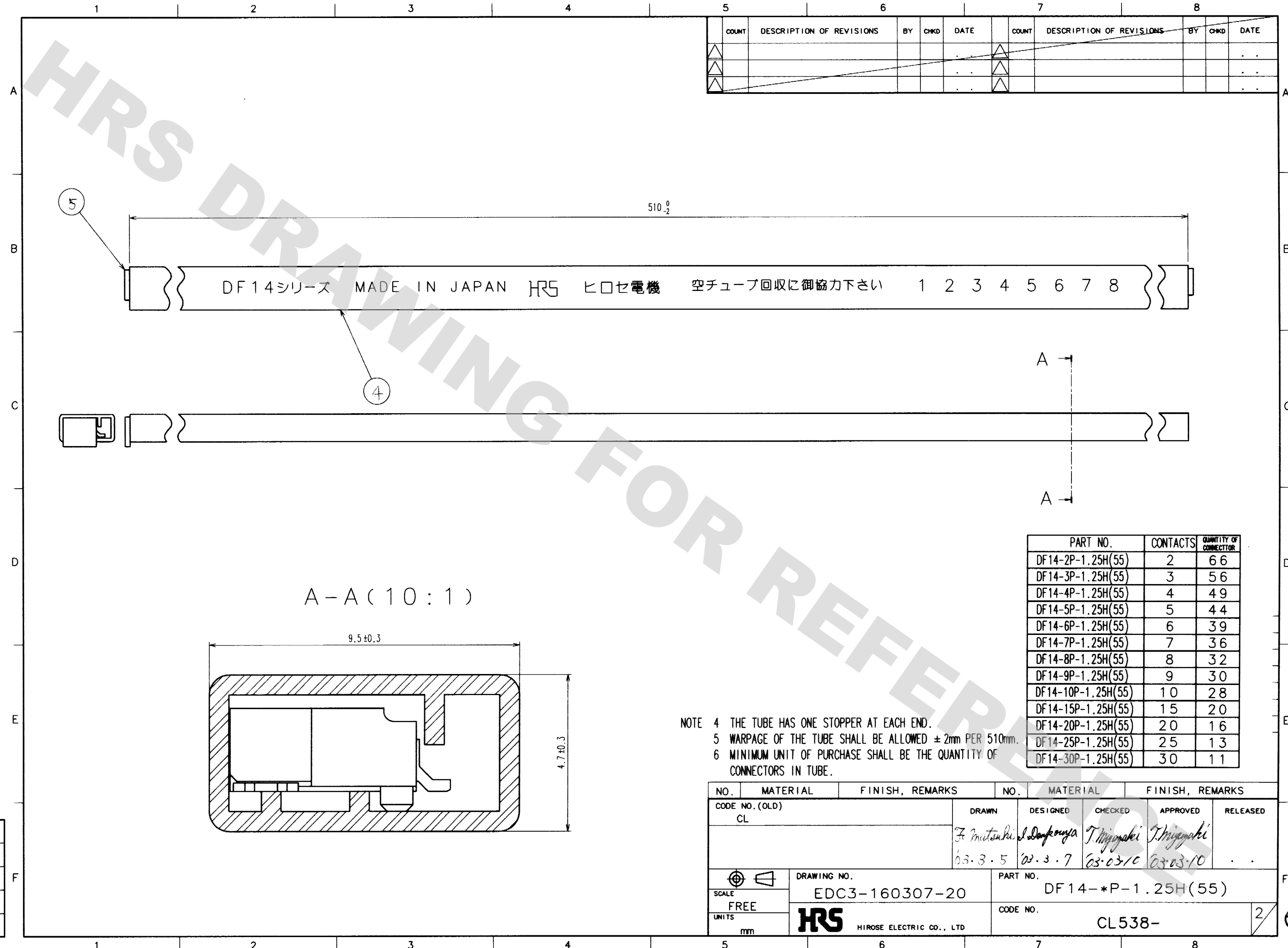
2	BRASS	CONTACT AREA: GOLD PLATED 0.1µm min LEAD AREA: TIN-COPPER PLATED 1µm min UNDER PLATING: NICKEL PLATED 1µm min	5	S. PVC	
1	POLYAMIDE	BEIGE, UL94V-0	4	RIGID VINYLCHLORIDE	ELECTROSTATIC PROTECTION
			3	PHOSPHOR BRONZE	TIN-COPPER PLATED 1µm min UNDER PLATING: NICKEL PLATED 0.5µm min
NO.	MATERIAL	FINISH, REMARKS	NO.	MATERIAL	FINISH, REMARKS

CODE NO. (OLD)	DRAWN	DESIGNED	CHECKED	APPROVED	RELEASED
CL	<i>F. Matsuiki</i>	<i>S. Dampanya</i>	<i>T. Miyazaki</i>	<i>T. Miyazaki</i>	
	03.3.5	03.3.7	03-03-10	03-03-10	

SCALE	DRAWING NO.	PART NO.
5 : 1	EDC3-160307-20	DF14-*P-1.25H(55)
UNITS	CODE NO.	
mm	CL538-	



COUNT	DESCRIPTION OF REVISIONS	BY	CHKD	DATE	COUNT	DESCRIPTION OF REVISIONS	BY	CHKD	DATE
△					△				
△					△				
△					△				



PART NO.	CONTACTS	QUANTITY OF CONNECTOR
DF14-2P-1.25H(55)	2	66
DF14-3P-1.25H(55)	3	56
DF14-4P-1.25H(55)	4	49
DF14-5P-1.25H(55)	5	44
DF14-6P-1.25H(55)	6	39
DF14-7P-1.25H(55)	7	36
DF14-8P-1.25H(55)	8	32
DF14-9P-1.25H(55)	9	30
DF14-10P-1.25H(55)	10	28
DF14-15P-1.25H(55)	15	20
DF14-20P-1.25H(55)	20	16
DF14-25P-1.25H(55)	25	13
DF14-30P-1.25H(55)	30	11

NOTE 4 THE TUBE HAS ONE STOPPER AT EACH END.
 5 WARPAGE OF THE TUBE SHALL BE ALLOWED ± 2mm PER 510mm.
 6 MINIMUM UNIT OF PURCHASE SHALL BE THE QUANTITY OF CONNECTORS IN TUBE.

NO.	MATERIAL	FINISH, REMARKS	NO.	MATERIAL	FINISH, REMARKS
CODE NO. (OLD) CL			DRAWN	DESIGNED	CHECKED
			<i>F. Mitsuaki</i>	<i>S. Danpouya</i>	<i>T. Miyazaki</i>
			03.3.5	03.3.7	03.03.10
			APPROVED	RELEASED	
			<i>T. Miyazaki</i>	<i>T. Miyazaki</i>	
			03.03.10	03.03.10	
DRAWING NO. EDC3-160307-20			PART NO. DF14-*P-1.25H(55)		
SCALE FREE			CODE NO. CL538-		
UNITS mm			2		

DRAWING FOR REFERENCE: This is subject to change without notice
08/11/2012

TO



X-ON Electronics

Largest Supplier of Electrical and Electronic Components

Click to view similar products for [Headers & Wire Housings](#) category:

Click to view products by [Hirose](#) manufacturer:

Other Similar products are found below :

[892-18-020-10-001101](#) [58102-G61-06LF](#) [582553-1](#) [0009485154](#) [009176003701906](#) [0050291907](#) [LY20-4P-DT1-P1E-BR](#) [02.125.8002.8](#)
[609-3404](#) [61062-3](#) [622-0430](#) [622-3653LF](#) [63453-116](#) [636-1030](#) [636-1427](#) [636-3427](#) [636-4007](#) [641938-9](#) [641991-4](#) [644827-2](#) [65817-010LF](#)
[65817-015LF](#) [65863-015LF](#) [66207-023LF](#) [67095-007LF](#) [67601157](#) [68648-049](#) [70.362.1628.0](#) [70-4210](#) [70-4226B](#) [70-4853B](#) [707-5020](#) [707-5028](#) [71.350.2428.0](#) [71918-208LF](#) [71961-016LF](#) [733-134](#) [733-162](#) [754199-000](#) [760-3052](#) [787-8014-00](#) [79531-3000](#) [FCN-360C032-B](#) [FCN-367T-T012/H](#) [FCN-723D010/2](#) [80.063.4001.1](#) [800-90-001-10-001000](#) [800-90-010-10-002000](#) [801-43-002-10-013000](#) [801-43-006-10-002000](#)