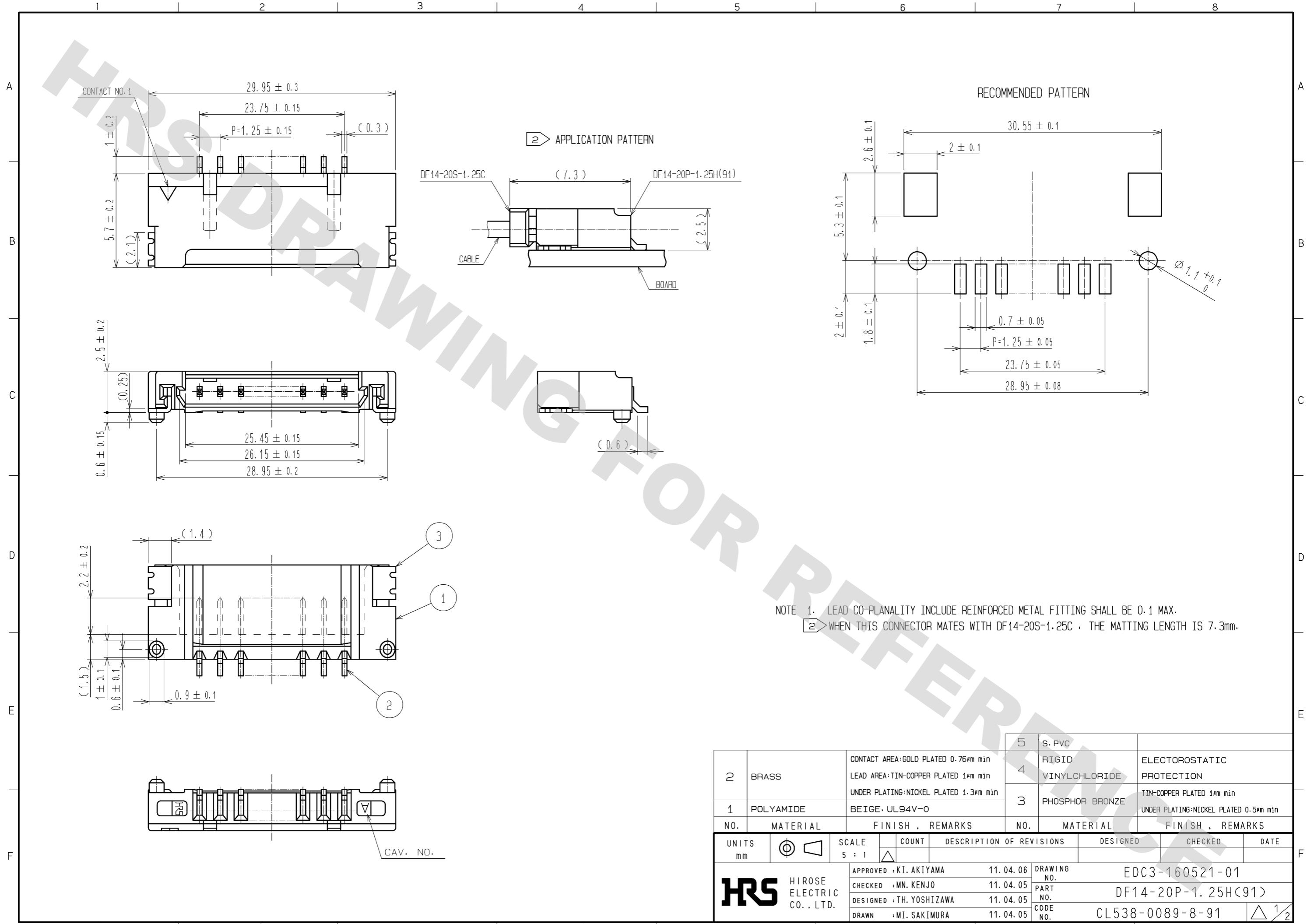


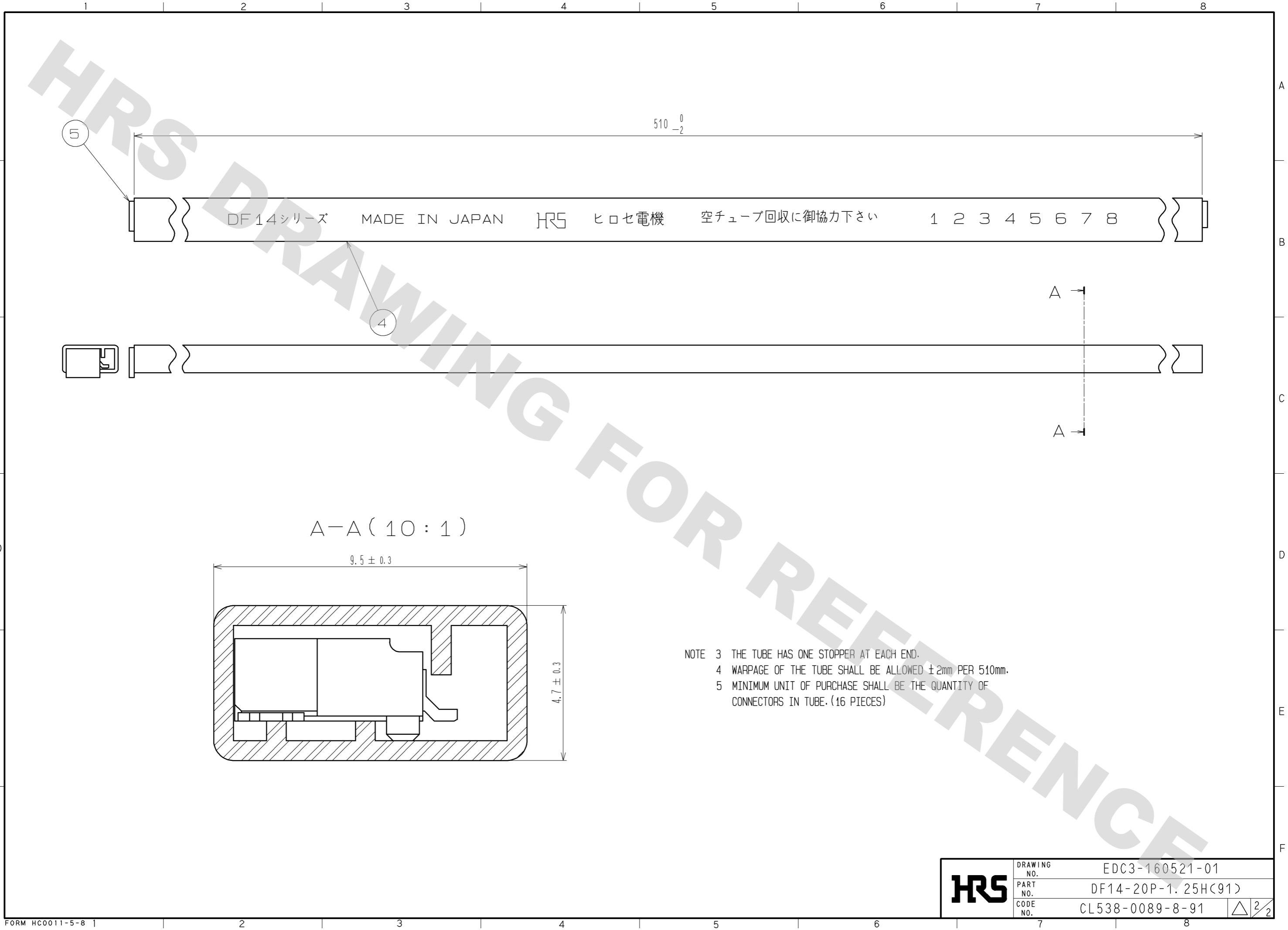
DRAWING FOR REFERENCE: This is subject to change without notice
08/11/2012



NOTE 1. LEAD CO-PLANALITY INCLUDE REINFORCED METAL FITTING SHALL BE 0.1 MAX.
 2. WHEN THIS CONNECTOR MATES WITH DF14-20S-1.25C, THE MATTING LENGTH IS 7.3mm.

2	BRASS	CONTACT AREA:GOLD PLATED 0.76µm min LEAD AREA:TIN-COPPER PLATED 1µm min UNDER PLATING:NICKEL PLATED 1.3µm min	5	S. PVC			
1	POLYAMIDE	BEIGE, UL94V-0	4	RIGID VINYLCHLORIDE	ELECTROSTATIC PROTECTION		
			3	PHOSPHOR BRONZE	TIN-COPPER PLATED 1µm min UNDER PLATING:NICKEL PLATED 0.5µm min		
NO.	MATERIAL	FINISH, REMARKS	NO.	MATERIAL	FINISH, REMARKS		
UNITS	mm	SCALE 5:1	COUNT	DESCRIPTION OF REVISIONS	DESIGNED	CHECKED	DATE
HRS HIROSE ELECTRIC CO., LTD.		APPROVED : KI. AKIYAMA 11.04.06	DRAWING NO. EDC3-160521-01				
		CHECKED : MN. KENJO 11.04.05	PART NO. DF14-20P-1.25H(91)				
		DESIGNED : TH. YOSHIZAWA 11.04.05	CODE NO. CL538-0089-8-91				
		DRAWN : MI. SAKIMURA 11.04.05					

DRAWING FOR REFERENCE: This is subject to change without notice
08/11/2012



DF14シリーズ MADE IN JAPAN HRS ヒロセ電機 空チューブ回収に御協力下さい 1 2 3 4 5 6 7 8

510⁰₋₂

A-A (10:1)

9.5 ± 0.3

4.7 ± 0.3

- NOTE 3 THE TUBE HAS ONE STOPPER AT EACH END.
- 4 WARPAGE OF THE TUBE SHALL BE ALLOWED ±2mm PER 510mm.
- 5 MINIMUM UNIT OF PURCHASE SHALL BE THE QUANTITY OF CONNECTORS IN TUBE. (16 PIECES)

HRS	DRAWING NO.	EDC3-160521-01
	PART NO.	DF14-20P-1.25H(91)
	CODE NO.	CL538-0089-8-91
		△ 2/2

X-ON Electronics

Largest Supplier of Electrical and Electronic Components

Click to view similar products for [Headers & Wire Housings](#) category:

Click to view products by [Hirose](#) manufacturer:

Other Similar products are found below :

[892-18-020-10-001101](#) [58102-G61-06LF](#) [582553-1](#) [0009485154](#) [009176003701906](#) [0050291907](#) [LY20-4P-DT1-P1E-BR](#) [02.125.8002.8](#)
[609-3404](#) [61062-3](#) [622-0430](#) [622-3653LF](#) [63453-116](#) [636-1030](#) [636-1427](#) [636-3427](#) [636-4007](#) [641938-9](#) [641991-4](#) [644827-2](#) [65817-010LF](#)
[65817-015LF](#) [65863-015LF](#) [66207-023LF](#) [67095-007LF](#) [67601157](#) [68648-049](#) [70.362.1628.0](#) [70-4210](#) [70-4226B](#) [70-4853B](#) [707-5020](#) [707-](#)
[5028](#) [71.350.2428.0](#) [71918-208LF](#) [71961-016LF](#) [733-134](#) [733-162](#) [754199-000](#) [760-3052](#) [787-8014-00](#) [79531-3000](#) [FCN-360C032-B](#) [FCN-](#)
[367T-T012/H](#) [FCN-723D010/2](#) [80.063.4001.1](#) [800-90-001-10-001000](#) [800-90-010-10-002000](#) [801-43-002-10-013000](#) [801-43-006-10-002000](#)